



Samsung NX3000 Back Case Replacement

This guide will help you replace the back case of the Samsung NX3000.

Written By: Kelsea Weber



INTRODUCTION

Use this guide to replace a damaged back case, or open the case to access other components of your camera.

We highly suggest you use a [magnetic project mat](#) or an [organization tray](#). This camera has **many** different types of screws and keeping them organized is key to proper reassembly.




TOOLS:

- [Magnetic Project Mat](#) (1)
 - [Phillips #00 Screwdriver](#) (1)
 - [Tweezers](#) (1)
-

Step 1 — Battery



- If you haven't done so already, remove the lens from the camera.
- Turn the camera upside down.
- Slide the button to the left to open the battery compartment.
- Push the blue button up to release the battery.

 The battery is not shown in these photos.

Step 2 — Lens Assembly



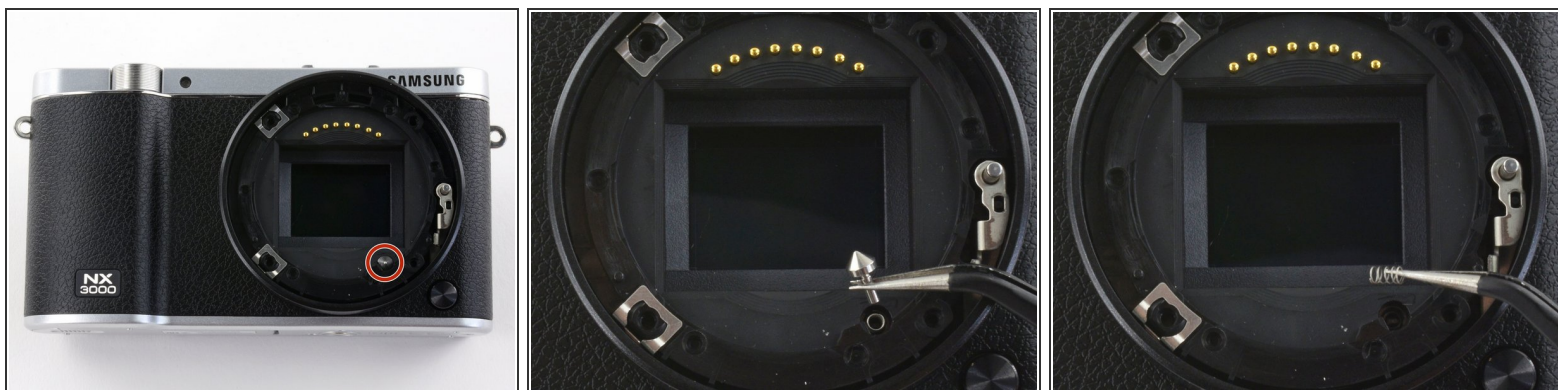
- Remove the four 7.3 mm Phillips screws from the front of the lens assembly.
- Remove the silver ring with tweezers.

Step 3



- Use tweezers to remove the black plastic ring and small metal ring inside the lens assembly.

Step 4



- Use tweezers to lift the pyramid screw and spring from the lens assembly.

Step 5 — Back Case



- Remove the three 4.3 mm Phillips screws from the bottom of the camera.
- Remove the 4.3 mm Phillips screw hiding inside the battery compartment.

Step 6



- Remove the 4.2 mm Phillips screw from the left handgrip.
- Remove the two 4.2 mm Phillips screws from the right handgrip.

Step 7



- Use tweezers to remove the metal shield from the external flash mount.

Step 8



- Remove the four 5 mm Phillips screws from the external flash mount .

Step 9



- Remove the external flash mount.

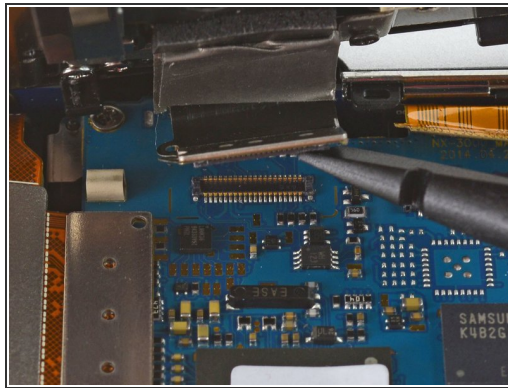
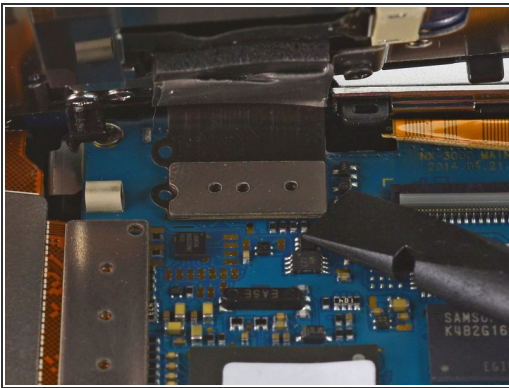
Step 10



- Slowly pull the bottom of the back case away from the camera.

⚠ Do not attempt to remove the back case as it is attached to the motherboard by a ribbon cable.

Step 11



- Use the flat end of a spudger to pry the flat topped connector straight up from the motherboard.
- Remove the back case.

To reassemble your device, follow these instructions in reverse order.