



# Samsung NX500 Main board Replacement

This guide will show you, in detail how to replace your main.

Written By: Eli Carcalete



---

## INTRODUCTION

If your device turns on but the screen is black or if you when take a picture it comes out distorted or blurry, you may need to change the main board. A bad main board can also cause distorted sound or no sound at all.



### TOOLS:

- [iFixit Opening Tools](#) (1)
  - [Phillips #000 Screwdriver](#) (1)
  - [Tweezers](#) (1)
-

## Step 1 — Battery



- Pull the switch on the bottom of the camera back with your thumb.

## Step 2



- Push second switch(blue) forward with your thumb.

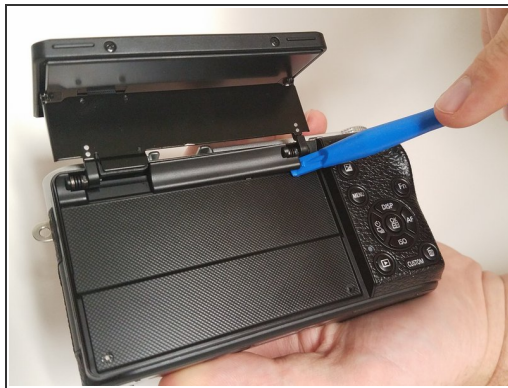


### Step 3



- Pull out battery.

### Step 4 — Screen Side Encasement



- Open the screen exposing the hinge cover and place the plastic opening tool inside.
- Pry the hinge cover up by moving the plastic opening tool in a downward motion.
- Remove the black 4mm Phillips #000 screw that is revealed once the hinge cover is removed.

## Step 5




- Unscrew the two 4 mm Phillips #000 screws on the right hand side of the camera using the screwdriver.
- Unscrew five more 4 mm Phillips #000 screws that are located at the bottom of the camera with the screwdriver.
- ⓘ In the second step, do not the remove the two 4 mm Phillips #000 screen on the screen.
- Remove the last exterior 4 mm Phillips #000 screws on the left hand side of the camera with the screddriver.

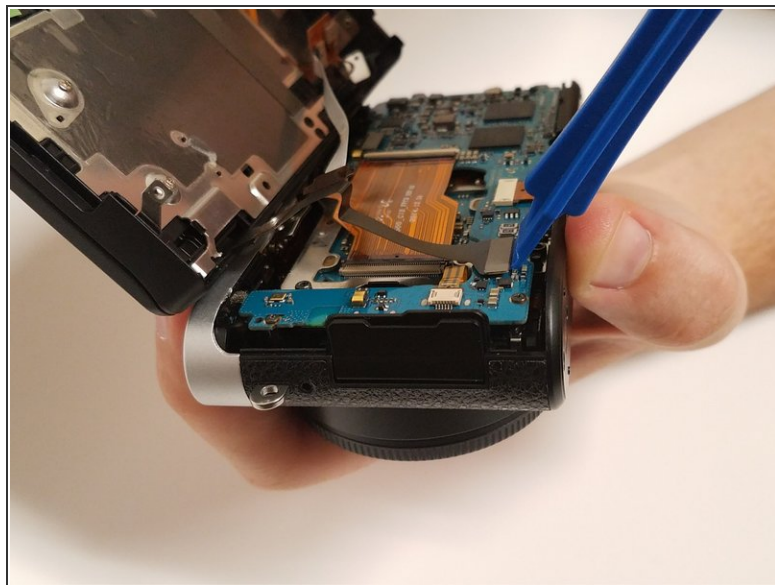
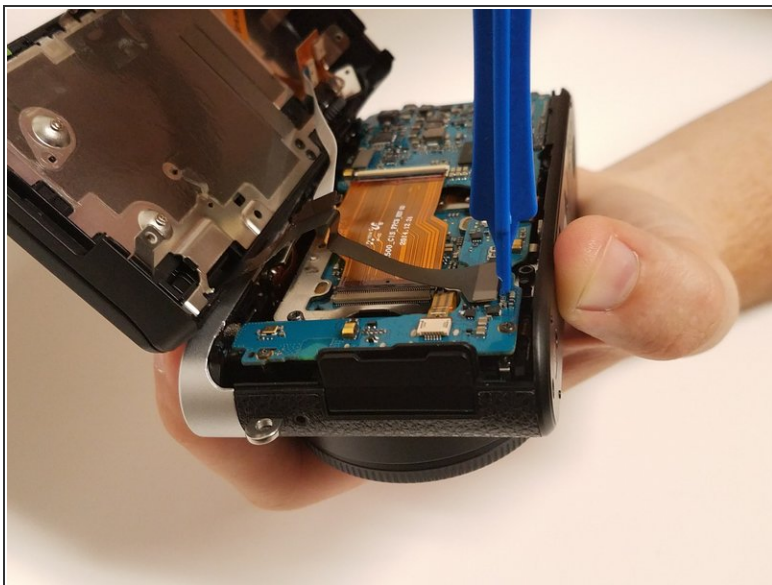
## Step 6




- Use the plastic opening tool in a downward motion around each side of the camera to pry the casing open.

 The casing should be removed easily; you shouldn't have to use much force.

## Step 7

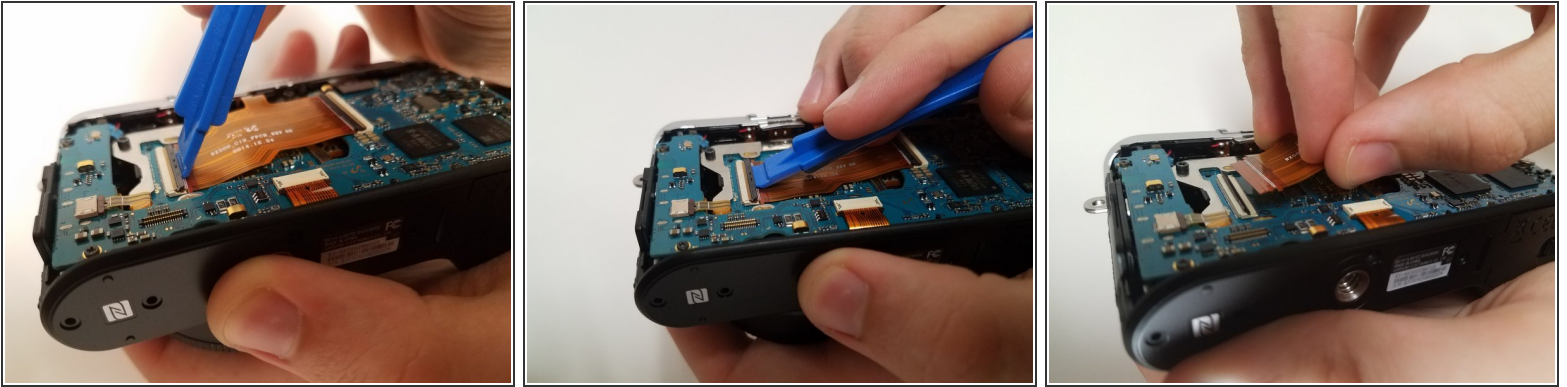



- Locate the black ribbon at the bottom left of the camera's interior.
- Place the plastic opening tool under the black ribbon connector.
- Remove the cable by moving your plastic opening tool in a downward motion.

 There is zero to little force needed to remove this ribbon.



## Step 8 — Main board



- Lift the black latch of the left main ribbon connector using a wide-set plastic opening tool in a downward motion.
  - Use your fingers to disconnect the cable.
-  There are five ZIF cables total to be removed.

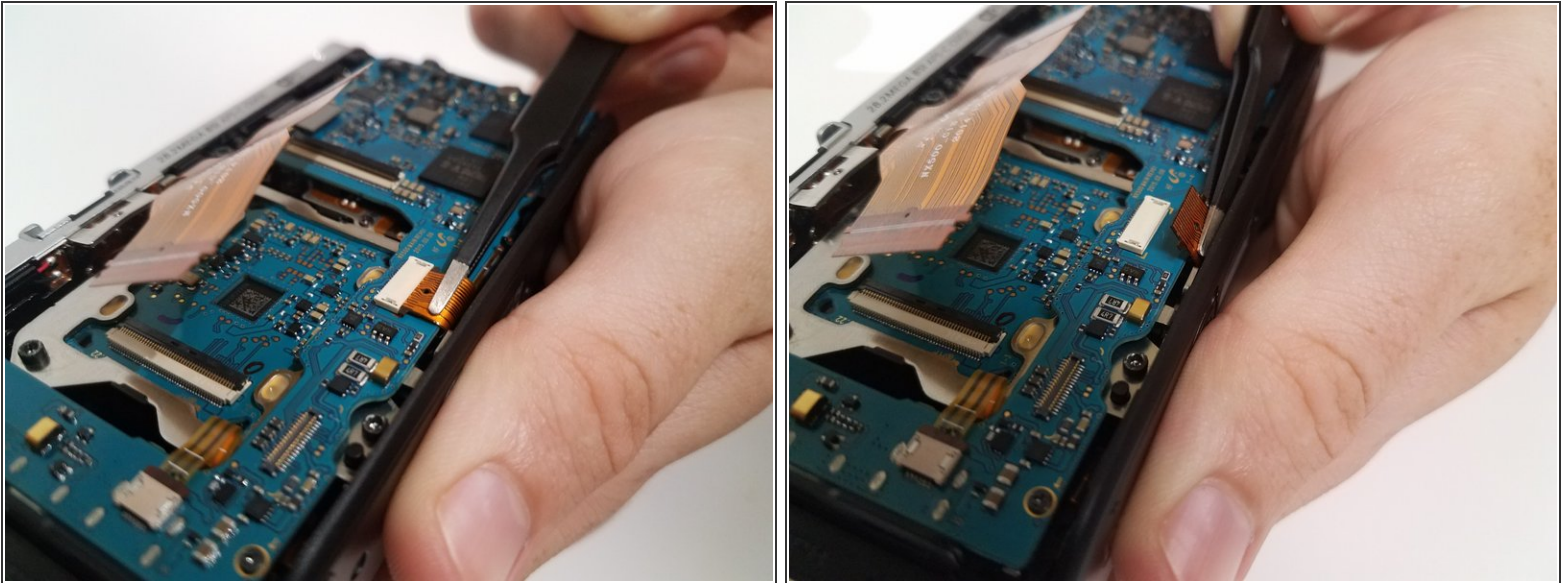
## Step 9



- Use the wide-set plastic opening tool to lift the latch on the right main ZIF cable in a downward motion.
- Disconnect the cable using your finger.



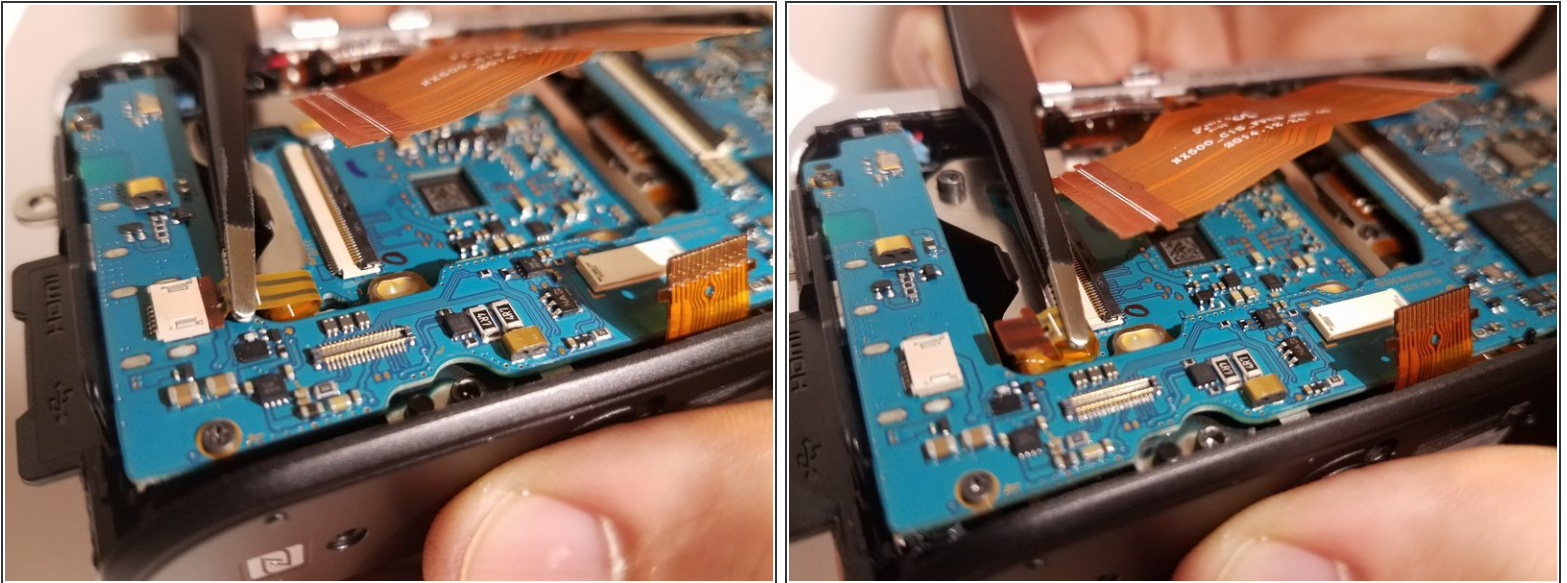
## Step 10



- Locate the ZIF cable at the bottom of the main board.
- Disconnect the cable with the tweezers by pulling it away from where the cable is connected.

⚠ Be careful not tug too hard on the cable as you can damage it.

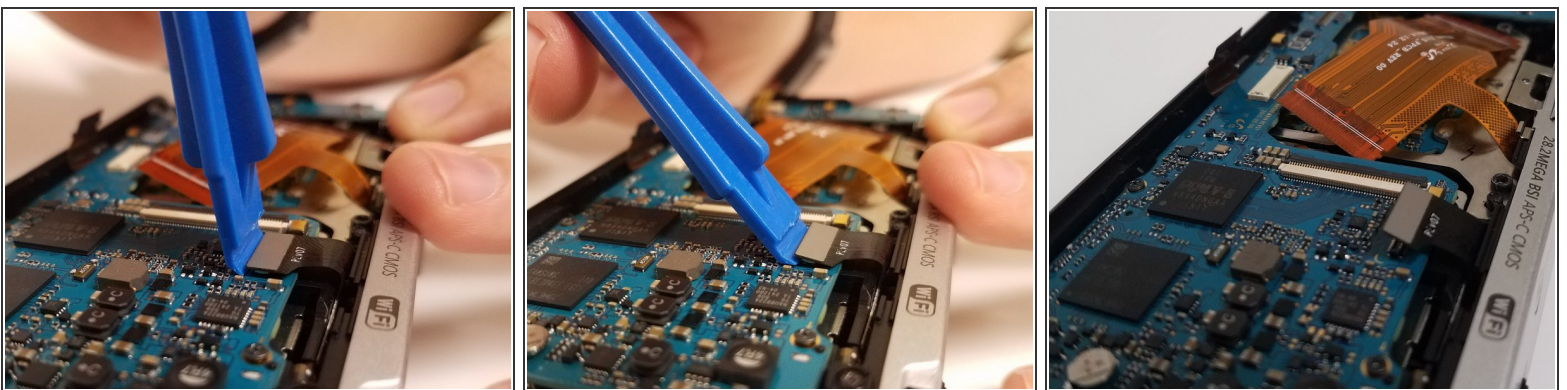
## Step 11



- Locate the skinny ZIF cable on the left side of the main board.
- Disconnect the cable with the tweezers by pulling it away from where the cable is connected.

⚠ Be careful not tug too hard on the cable as you can damage it.

## Step 12



- Locate the black cable connected at the top right of the main board.
- Place the wide-set plastic opening tool underneath the gray connector and carefully pry it up.

ⓘ It will easily pop up.

## Step 13



- Remove the 4 black 4-mm Phillips #000 screws located near each corner of the main board.

⚠ Lift the board out of the casing and carefully put it somewhere safe.

To reassemble your device, follow these instructions in reverse order.