



Samsung NX500 Screen Assembly Replacement

If your screen shows pitch black or if it's cracked, this guide will deliver steps on how to replace it.

Written By: Eli Carcalete



INTRODUCTION

A cracked screen or broken LCD are reasons as to why you should replace the screen. Make sure you absolutely have to replace the screen before you take on this task.



TOOLS:

- [Phillips #000 Screwdriver](#) (1)
-

Step 1 — Battery



- Pull the switch on the bottom of the camera back with your thumb.

Step 2



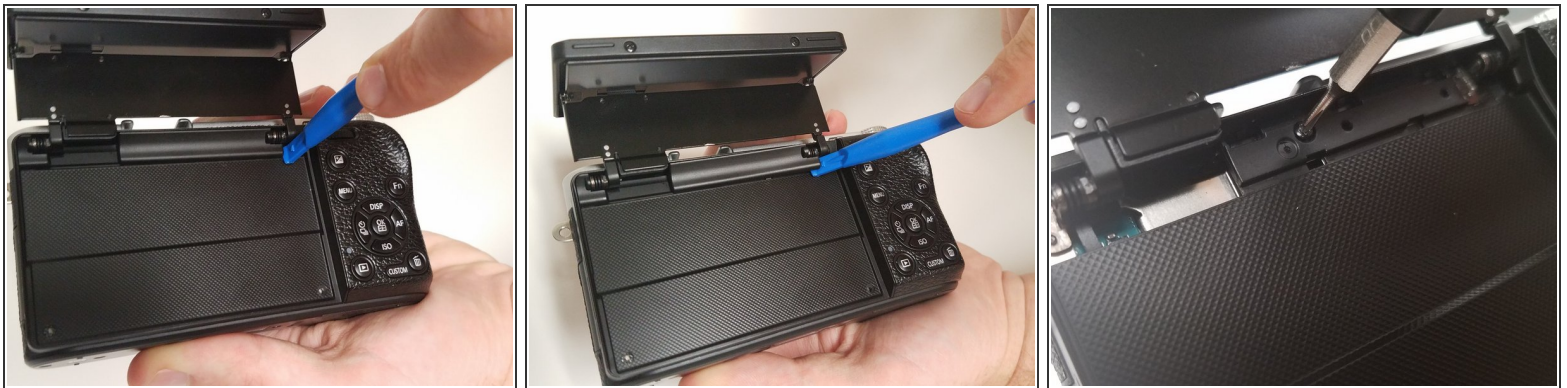
- Push second switch(blue) forward with your thumb.

Step 3



- Pull out battery.

Step 4 — Screen Side Encasement



- Open the screen exposing the hinge cover and place the plastic opening tool inside.
- Pry the hinge cover up by moving the plastic opening tool in a downward motion.
- Remove the black 4mm Phillips #000 screw that is revealed once the hinge cover is removed.

Step 5




- Unscrew the two 4 mm Phillips #000 screws on the right hand side of the camera using the screwdriver.
- Unscrew five more 4 mm Phillips #000 screws that are located at the bottom of the camera with the screwdriver.
- ⓘ In the second step, do not the remove the two 4 mm Phillips #000 screen on the screen.
- Remove the last exterior 4 mm Phillips #000 screws on the left hand side of the camera with the screddriver.

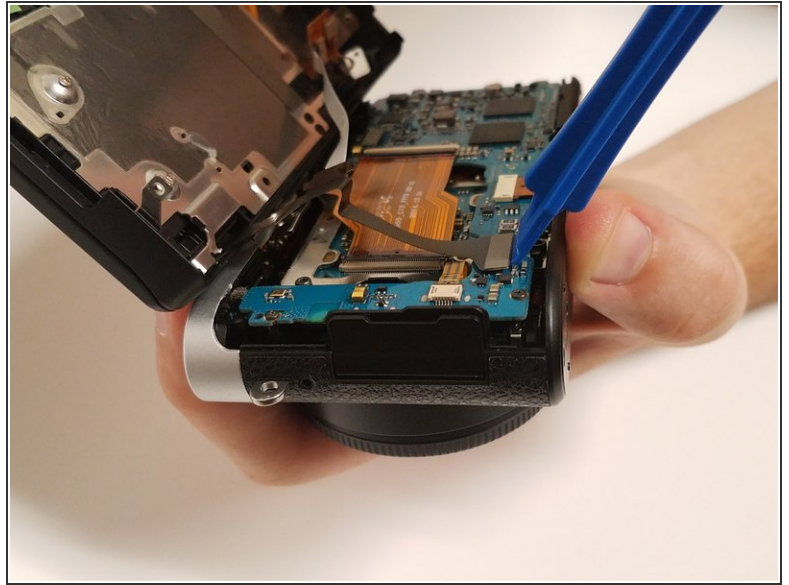
Step 6



- Use the plastic opening tool in a downward motion around each side of the camera to pry the casing open.

 The casing should be removed easily; you shouldn't have to use much force.

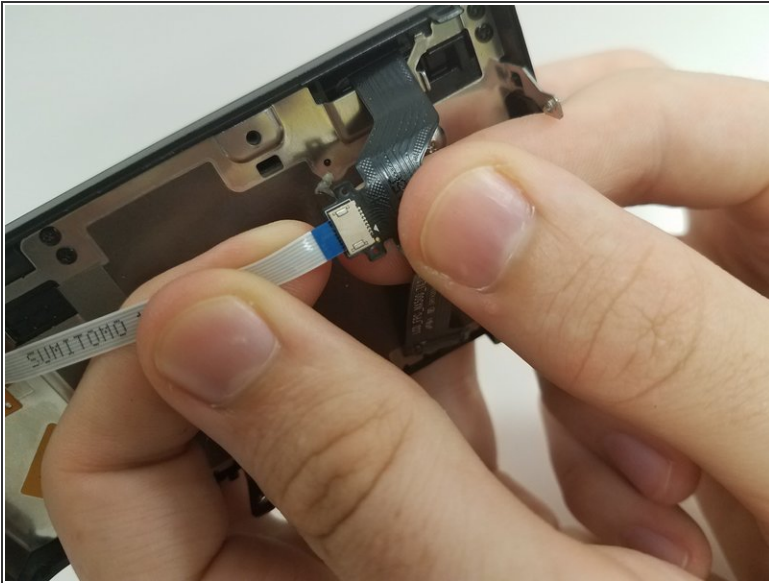
Step 7



- Locate the black ribbon at the bottom left of the camera's interior.
- Place the plastic opening tool under the black ribbon connector.
- Remove the cable by moving your plastic opening tool in a downward motion.

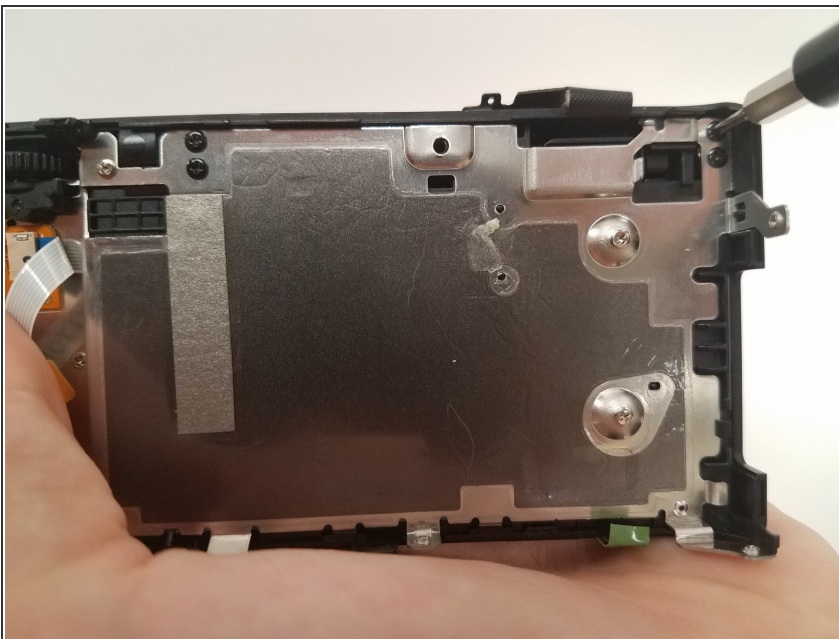
⚠ There is zero to little force needed to remove this ribbon.

Step 8 — Screen Assembly



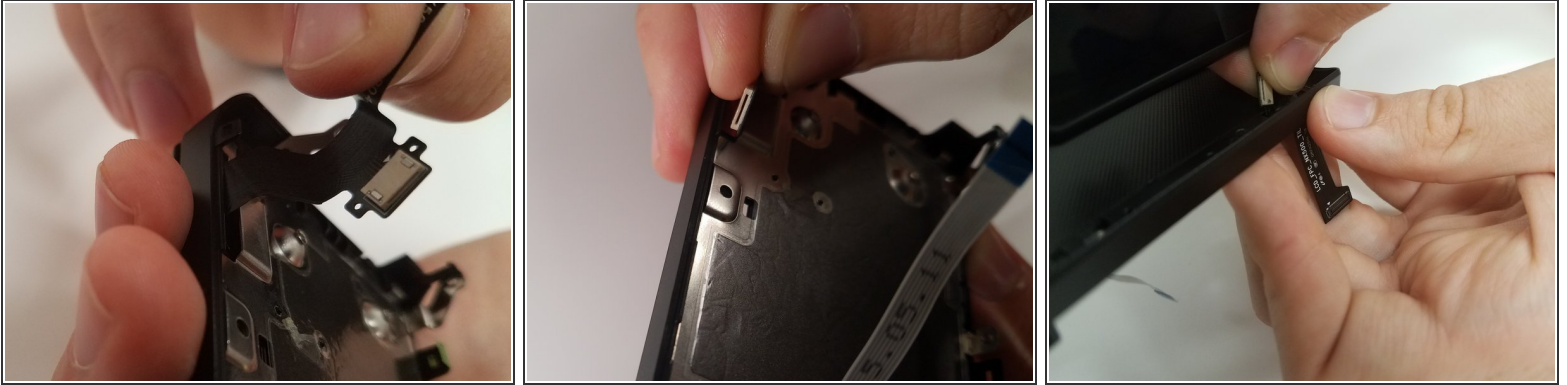
- Locate where the white ribbon cable connects to the black LCD cable.
- Using both hands, separate the cables by pulling them away from each other.

Step 9



- Remove the four black 2-mm Phillips type 000 using the screwdriver.
- **Remark** : Since these four screwdrivers are easilly loosen during normal handling, be sure that screw them very fasten or screw with a bond suck like Loctite when reassembling.

Step 10



- Carefully grab the LCD cable and begin to guide it through the hole it comes enters from.
- Maneuver the connector through the exit site.
- Carefully pull the cable through from the exterior of the screen encasement.

To reassemble your device, follow these instructions in reverse order.