

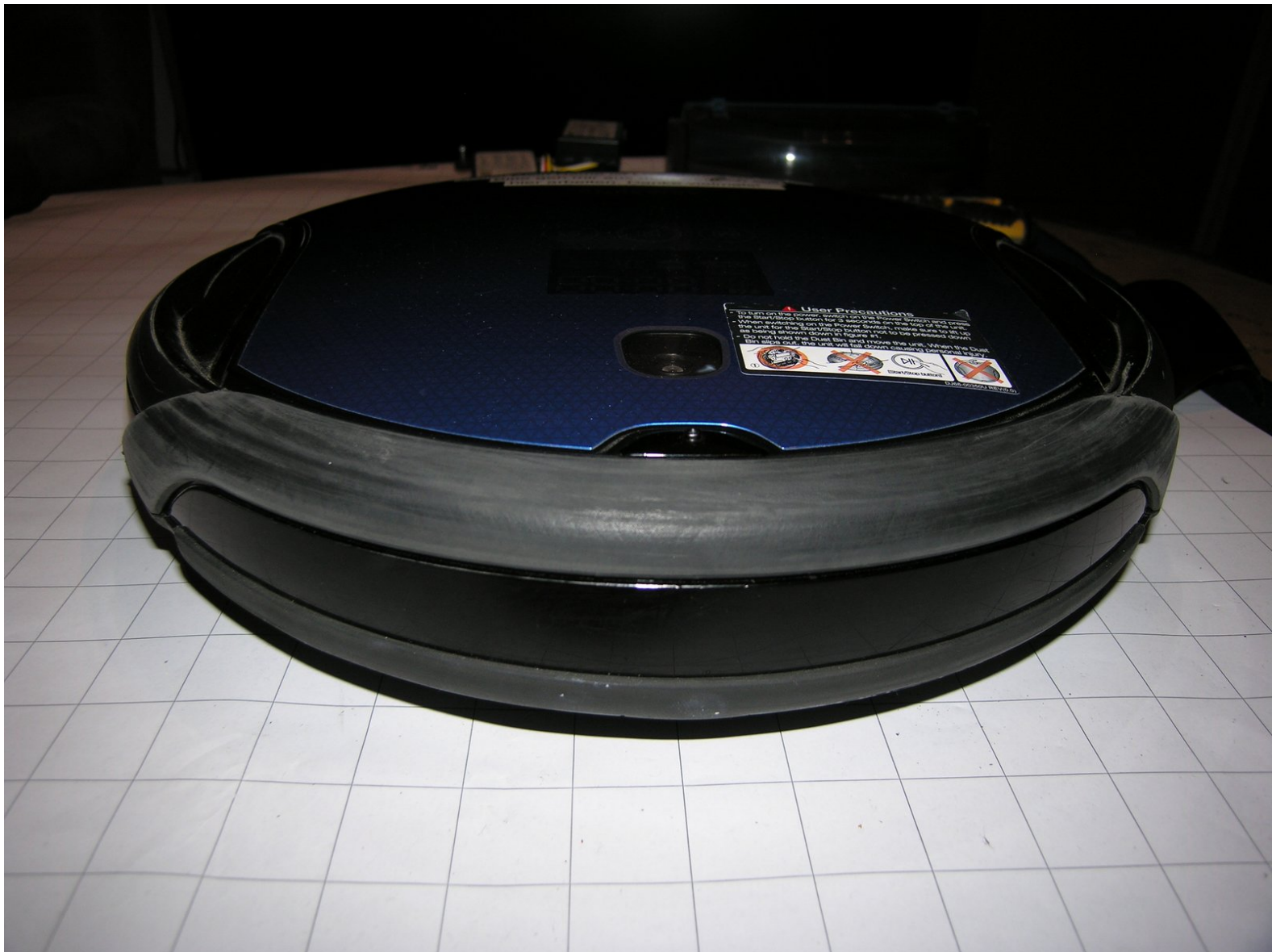


Samsung NaviBot SR8981 (VCR8981L3B-XEG)

Disassembly

A commented How To to disassemble the Samsung NaviBot SR8981 (VCR8981L3B-XEG) to its parts.

Written By: Juvallós



INTRODUCTION

A commented How To to disassemble the Samsung NaviBot SR8981 (VCR8981L3B-XEG) to its parts.

The How To in the Answer of szantaiimre on the following page helped me a lot, with slight adjustments (same Manufacturer, other Modell, but near enough)!

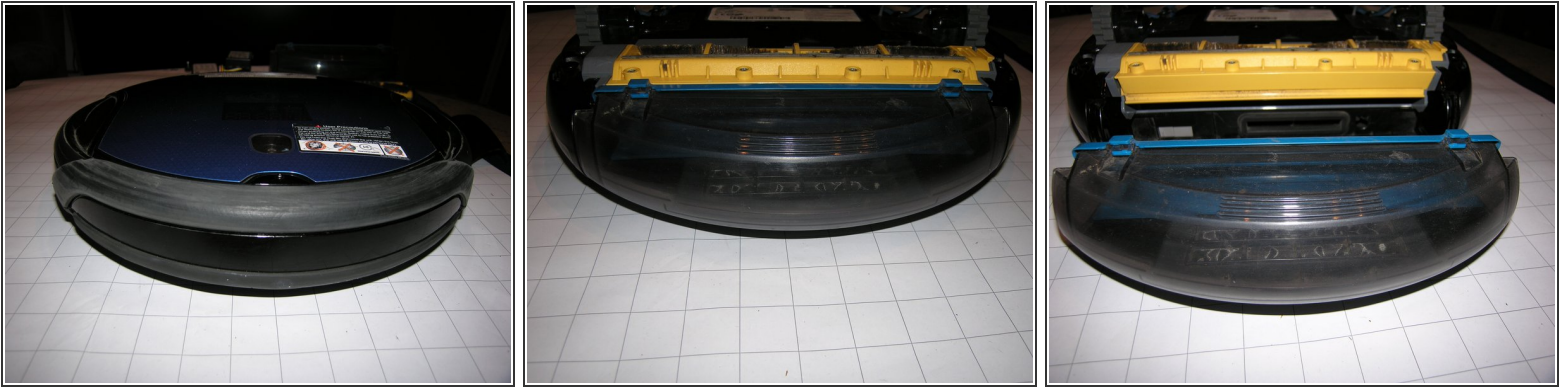
[How to disassemble Samsung navibot SR8875?](#)



TOOLS:

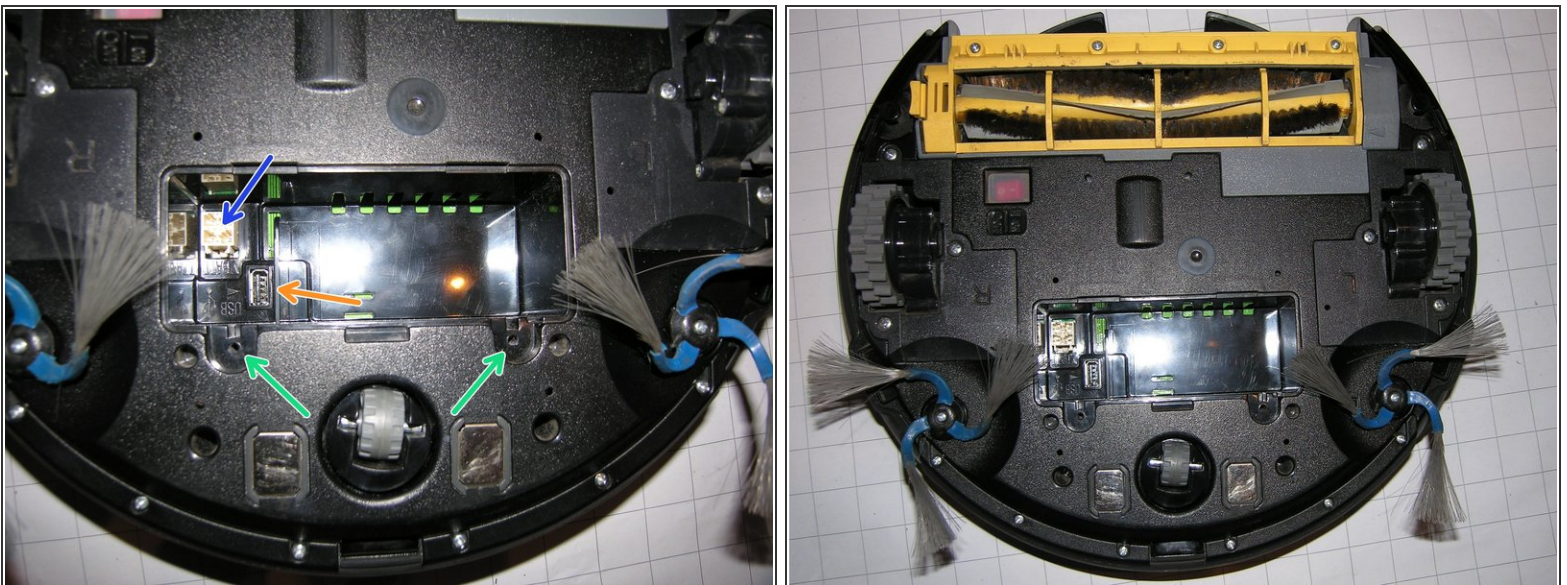
- [Phillips #2 Screwdriver](#) (1)
 - [Metal Spudger](#) (1)
 - [New Item](#) (1)
-

Step 1 — Remove the dust container



- First, remove the dust container from the SR8981.

Step 2 — Remove the battery



- Screw on the battery compartment at the green marked points and open the lid.
 - The blue arrow marks the connection between the battery and the housing. Once this is solved, the battery can be removed from the device.
- i** Note: The orange arrow marks a USB interface that is likely to change the operating system or update it.

Step 3 — Remove cover of cleaning brush



- Open and remove the brush cover on the fixing clip (green arrow).

Step 4 — Disassemble cleaning brush



- The brush can be easily lifted out of the warehouse on the right and then removed to the right.

Step 5 — Remove side panels



- The first picture shows the side view.
- Second picture: The plastic bracket (green arrow) of the side part must be carefully levered over the plastic nose (blue arrow). Subsequently, the side part can be pulled backwards.
- Third picture: The side panel has been pulled back, now the plastic bracket (green arrow) and the plastic nose (blue arrow) are clearly visible.

Step 6 — Disassemble the upper cover plate



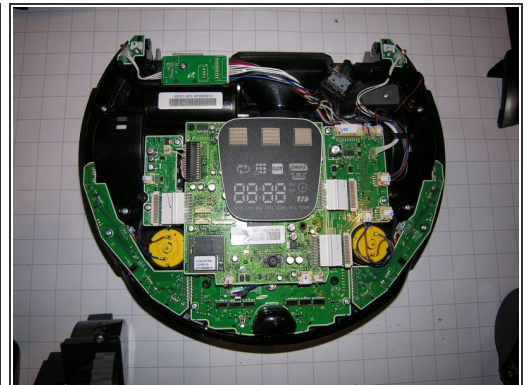
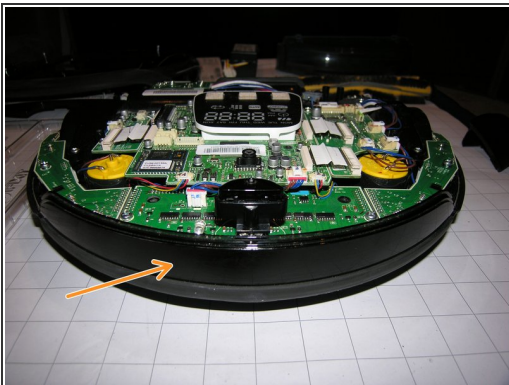
- Loosen screws on the left (first picture) and on the right
- Second picture: carefully loosen the plastic claw and pry off the cover plate.
- Third picture: the NaviBot without cover plate

Step 7 — Remove intermediate level



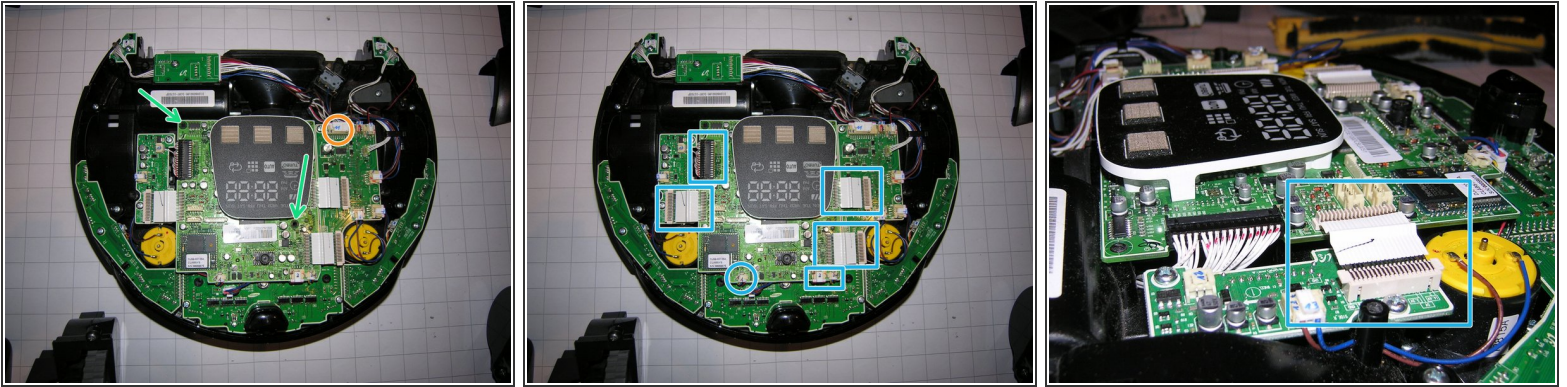
- Remove the marked screws (green arrows) and remove the intermediate level.

Step 8 — Front sensor cover



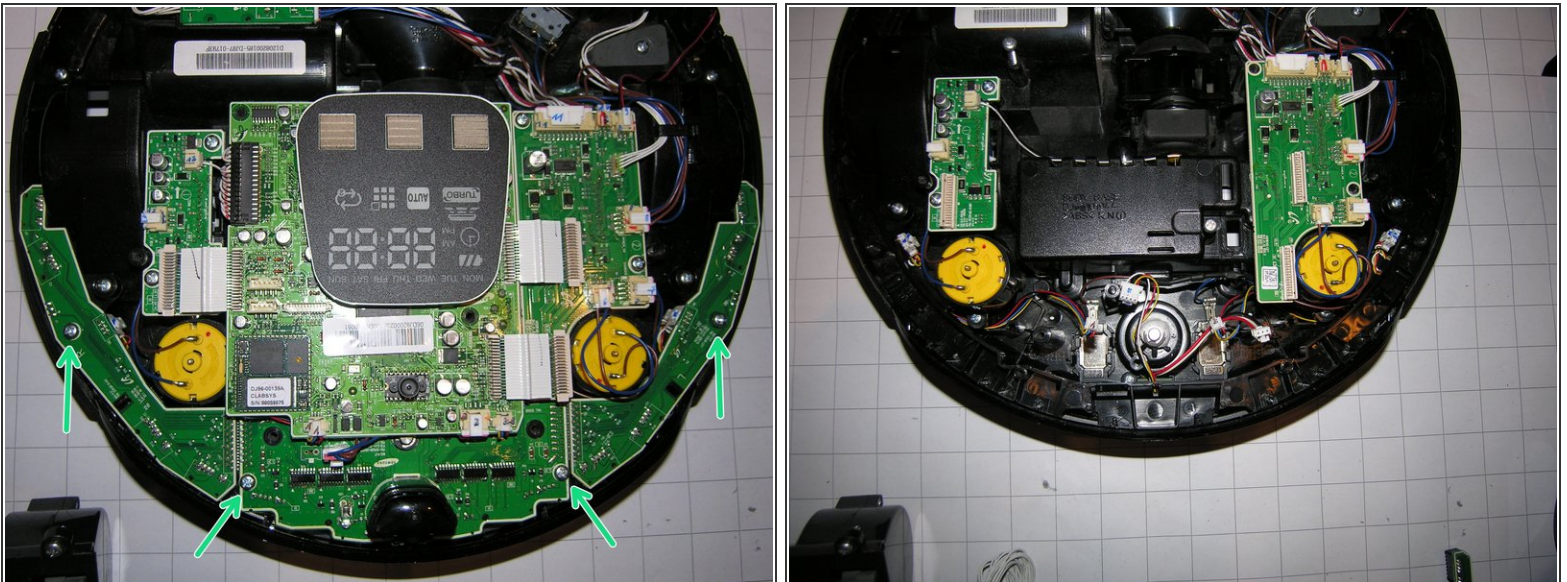
- To disassemble the front sensor cover, the six screws on the bottom (second picture) must be removed.

Step 9 — Disconnect motherboard



- Remove the screws on the green arrows.
- ⓘ Note: As you can see from the orange mark, I have numbered the connectors that do not explain themselves by their placement on both the connector and the connector. As a result, they are easier to reassign later.
- Release the plug connections (Fig. 2). Caution: especially the rigid cable connections (Figure 3) are a bit difficult to open and can be damaged without the proper caution.

Step 10 — Disassemble the sensor board



- Once the four front screws are loosened, the front tripartite sensor board can also be removed.

Follow the instructions in reverse, to reassemble the Device.