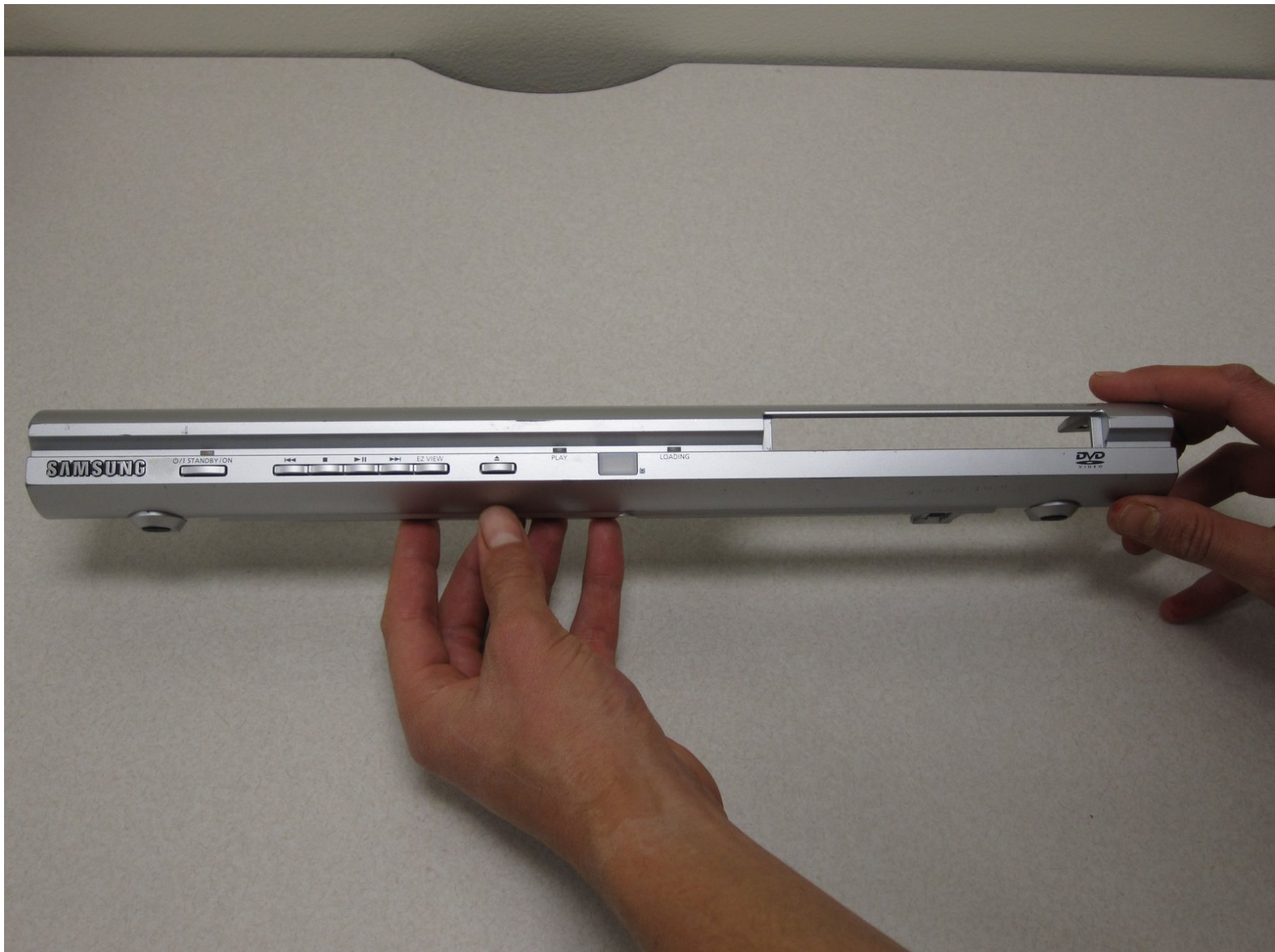




# Samsung P241 Front Panel Button replacement

This guide will show you how to remove the front panel of the DVD player to fix jammed buttons.

Written By: Matt Russell



## INTRODUCTION

Make sure you look at the [Samsung P241 Troubleshooting Guide](#) first to see if you can solve your problem without taking the DVD player apart.

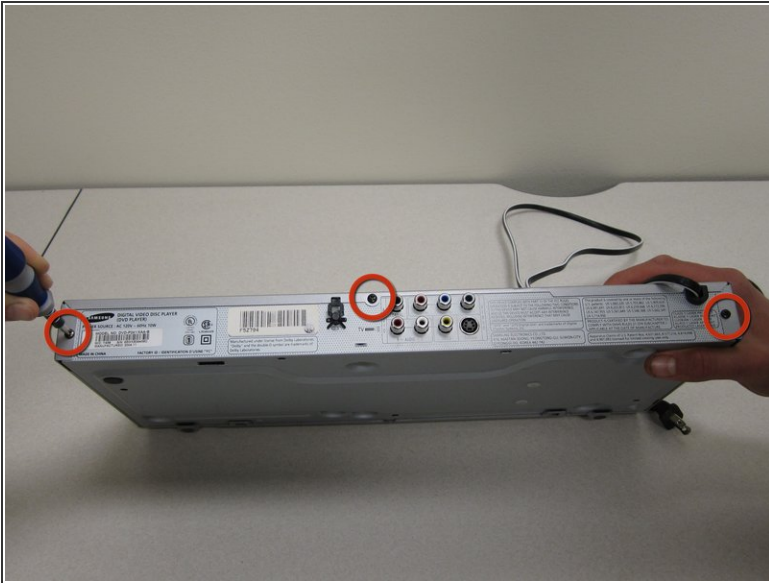
If the button panel is broken a replacement button panel will need to be purchased.




### TOOLS:

- [Phillips #1 Screwdriver](#) (1)
  - [Flathead 3/32" or 2.5 mm Screwdriver](#) (1)
-

## Step 1 — Top Case



 You will need to be near a power source for this guide.

- With the back of the DVD player facing you, remove the three 1 cm black screws on the right, left, and top sides using a Phillips #1 screwdriver.

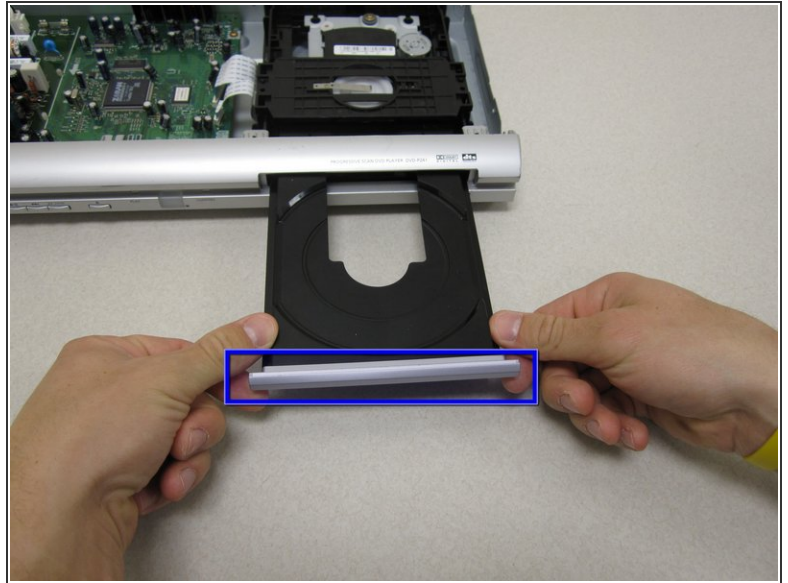
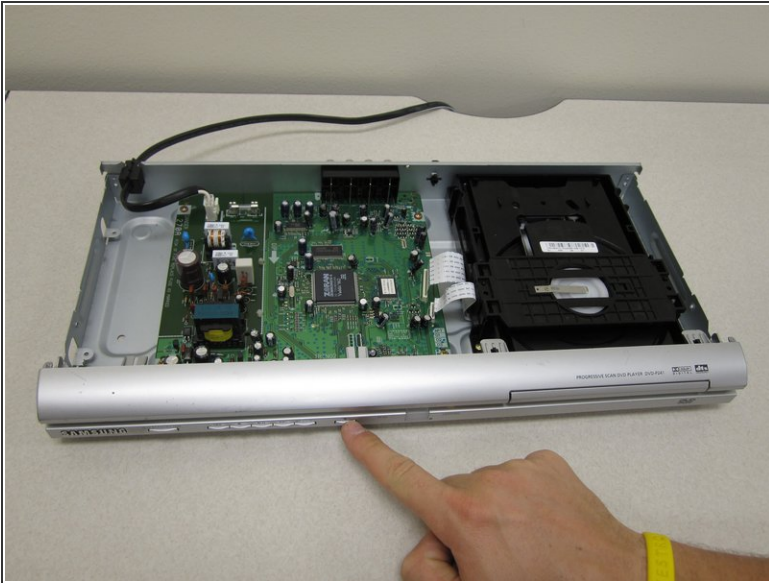
## Step 2



- Pull the top cover towards you until you can lift it up and off.

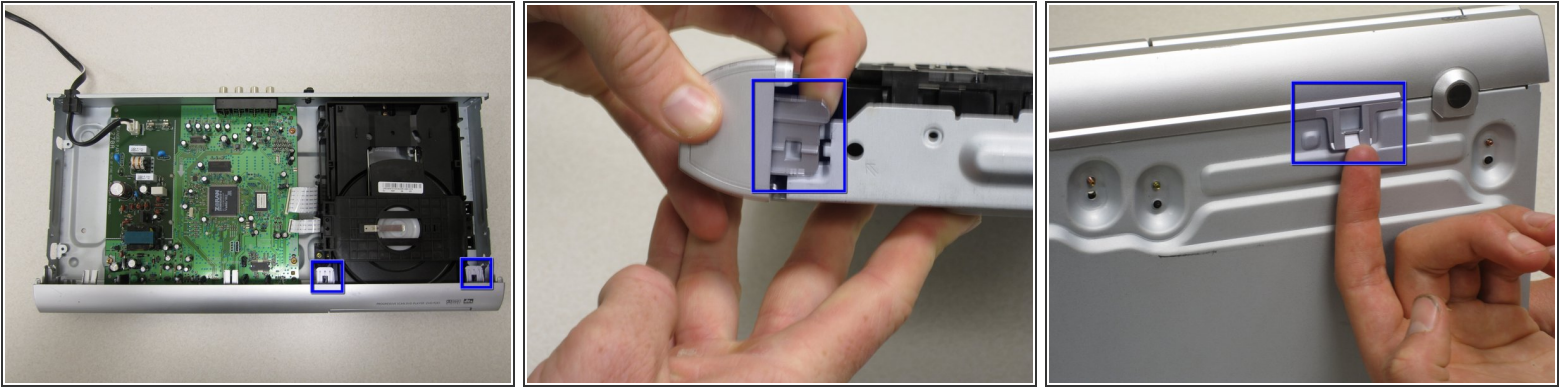


## Step 3 — Front Panel



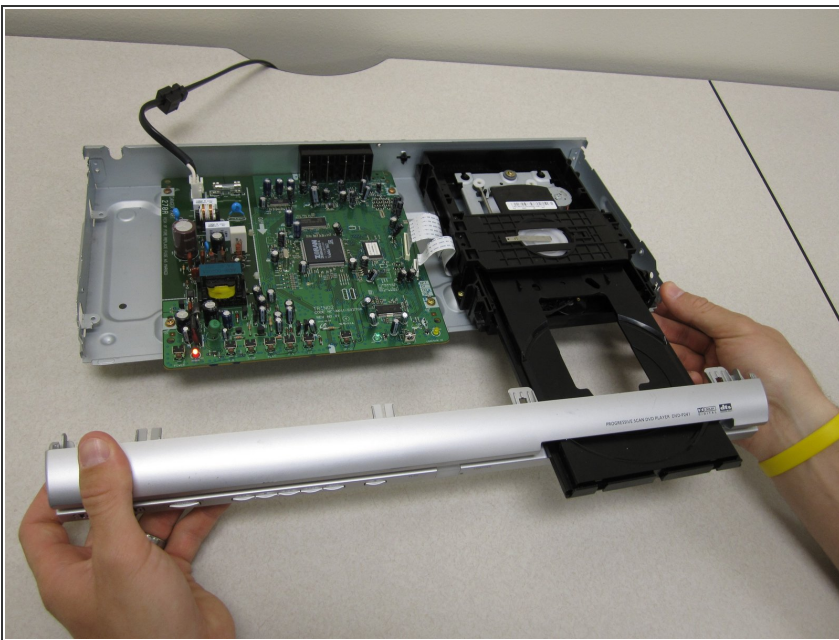
- With the front of the DVD player facing you, turn the power on and eject the disc tray.
  - Press down on the disc tray with your thumbs while also pressing up with your pointer finger on the left and right edges of the silver cover. The cover should easily pop up and off the disc tray.
- ⚠ Be careful not to crack or bend the disc tray by pulling too hard.

## Step 4



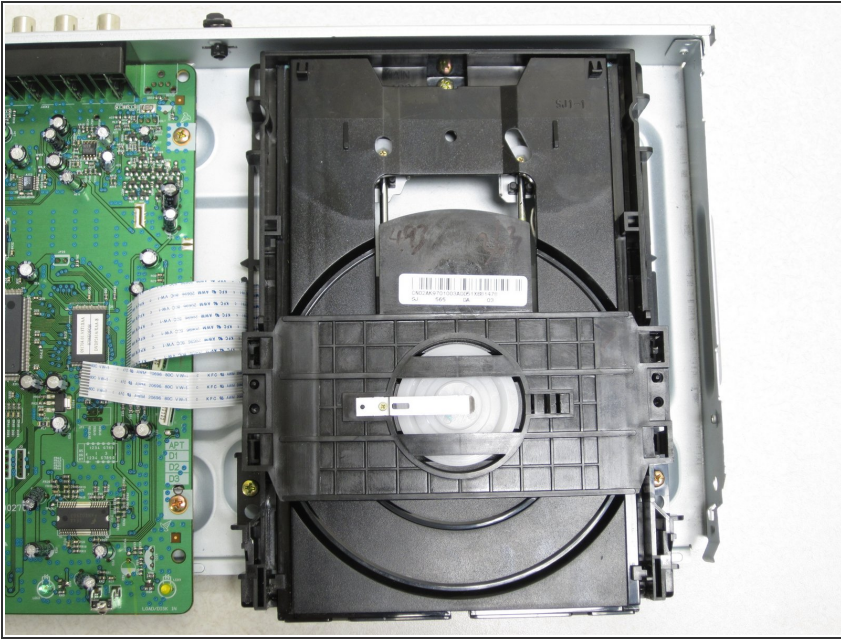
- To remove the front panel, lift up the clips on the bottom, left and right sides of the DVD player.
- ⓘ Be sure to have all clips lifted up at the same time otherwise it will be difficult to get the panel off.
- ⓘ If you are having trouble removing the panel, try wedging an object underneath the two clips on the bottom to keep them from falling back into place.

## Step 5



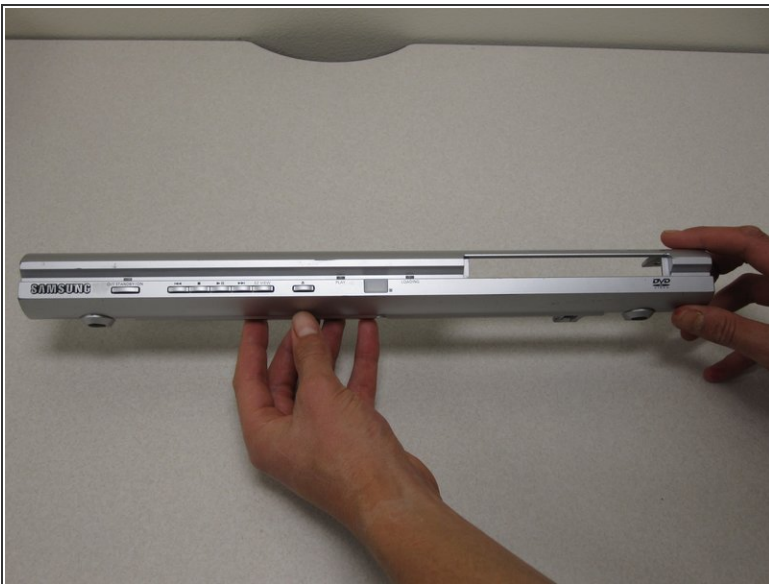
- Gently remove the front panel by pulling it forward.

## Step 6



- Press the eject button again to make the disc tray slide back into place.
- ⚠ Turn off the DVD player and unplug it from the wall before proceeding to further steps.

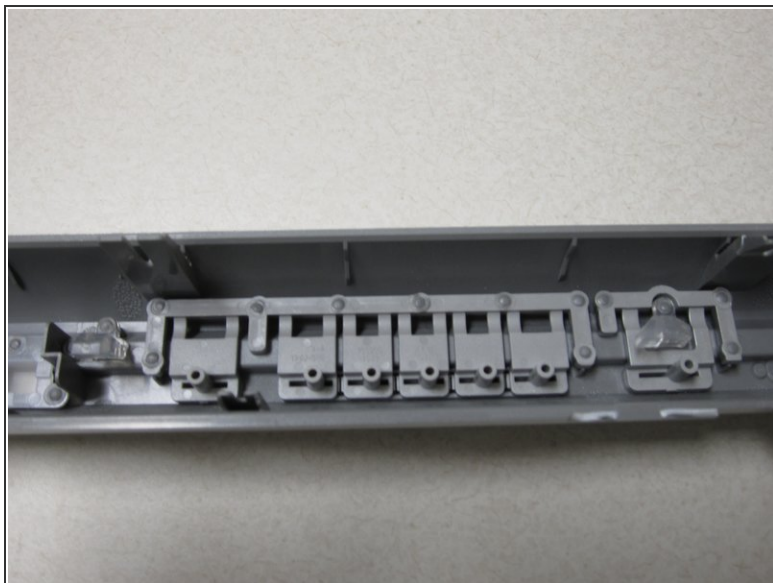
## Step 7 — Front Panel Buttons



- Holding the front panel so the Samsung logo is visible, rotate the panel to view the opposite side.



## Step 8



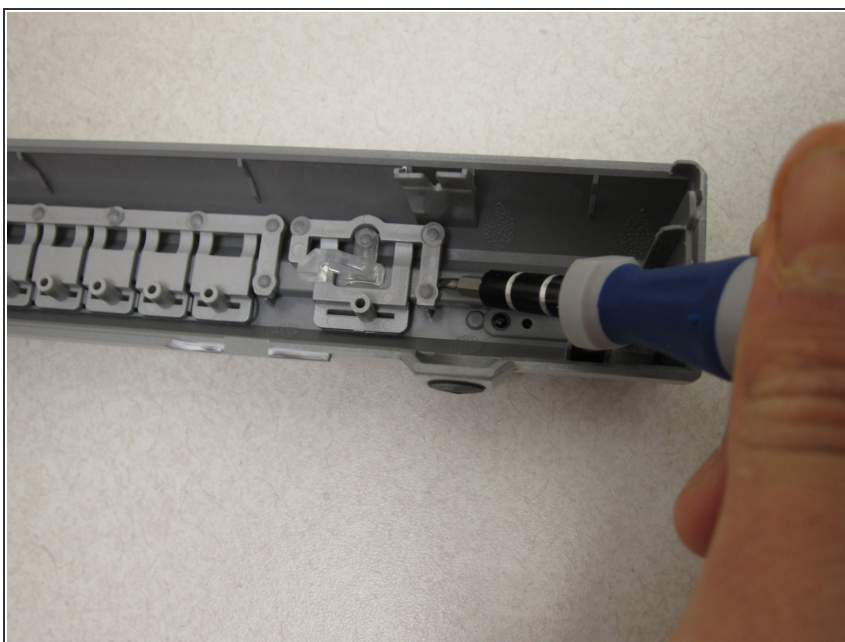
- Locate the button panel on the inside towards what is now the right of the front panel.

## Step 9



- To unjam a button, use a finger or flathead screwdriver, and firmly press against the jammed portion of the button panel.
- Press until the button slides back into it's designated button slot.

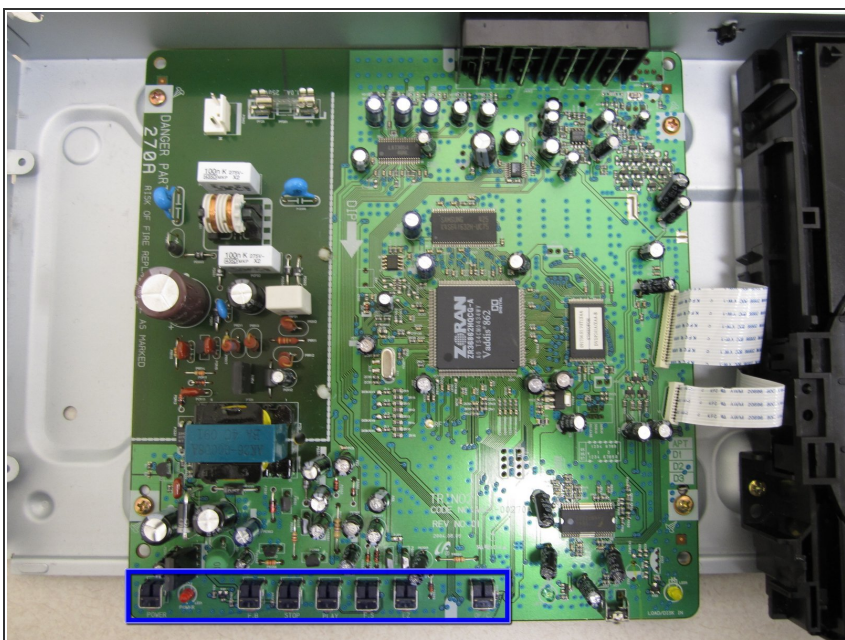
## Step 10



- If the button panel is broken, use a flathead screwdriver to pry the button panel from the back of the front panel.
- With strong plastic adhesive, glue the new button panel into place with each button in it's designated button slot.

⚠ Allow the adhesive time to properly dry before pressing buttons.

## Step 11



- If the button panel is not the cause of the problem, the button sensors on the motherboard need to be replaced.
- You can refer to [this guide](#) for directions on how to solder new sensors on your motherboard if you don't want to replace the entire motherboard.

To reassemble your device, follow these instructions in reverse order.