



Samsung PL20 Lens Replacement

Step by step guide to remove and replace the lens of a Samsung PL20 digital camera.

Written By: oldturkey03



INTRODUCTION

Use this guide to remove and replace a dysfunctional lens on the Samsung PL20 digital camera.



TOOLS:

- [Phillips #00 Screwdriver](#) (1)
- [iFixit Opening Tools](#) (1)



PARTS:

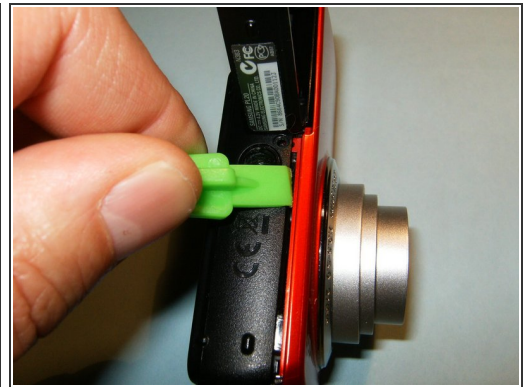
- [Replacement Lens](#) (1)

Step 1 — Lens



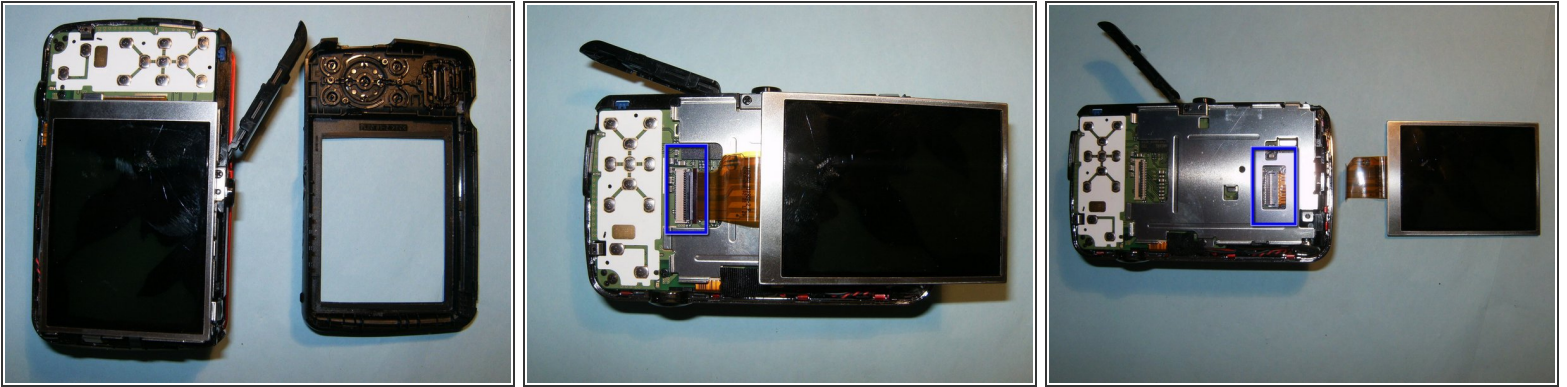
- Remove the battery and the memory card from the device.
- Remove the two screws on the side of the device, to the left of the camera lens.

Step 2



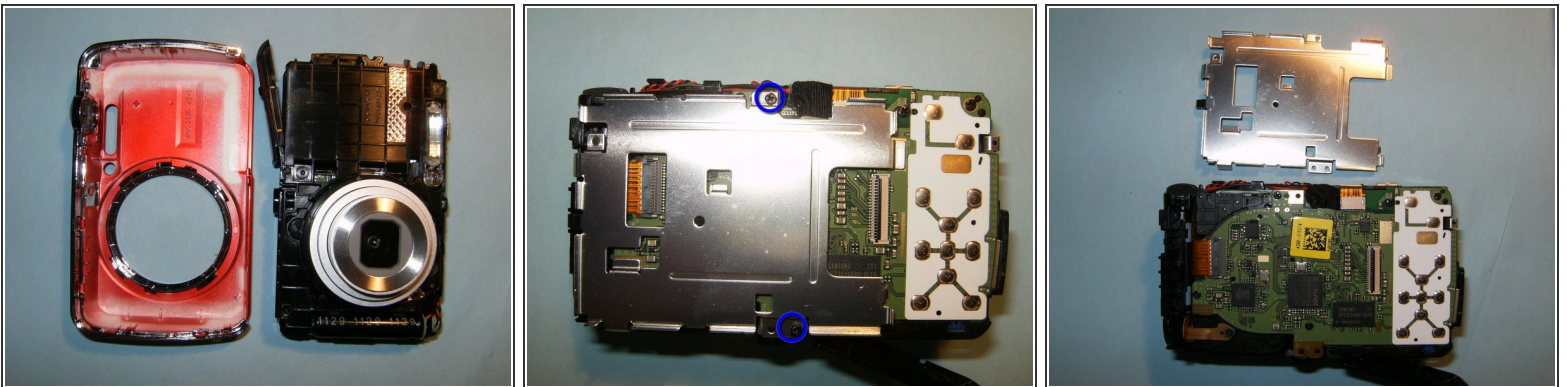
- Remove the single screw from the bottom of the device.
- Remove the two screws on the side of the the device, to the right of the camera lens.
- Using a plastic opening tool, pry the outside casing apart. Start from the battery compartment and work around the seem of the casing.

Step 3



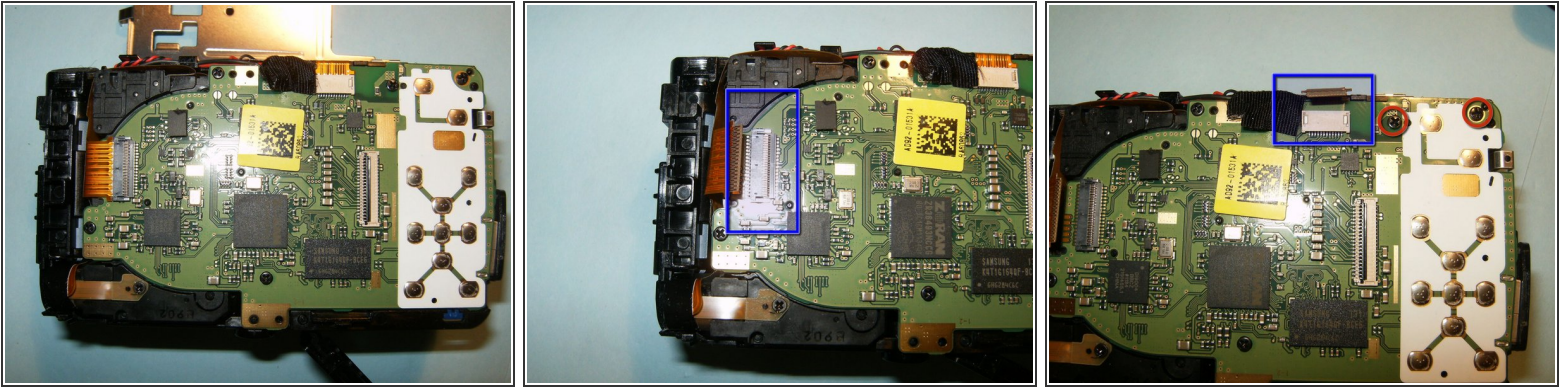
- Remove the back panel, revealing the LCD screen.
- Pull the LCD screen out of its holder. Once you have access to the connecting strip, flip the clip upwards releasing the screen completely and remove.

Step 4



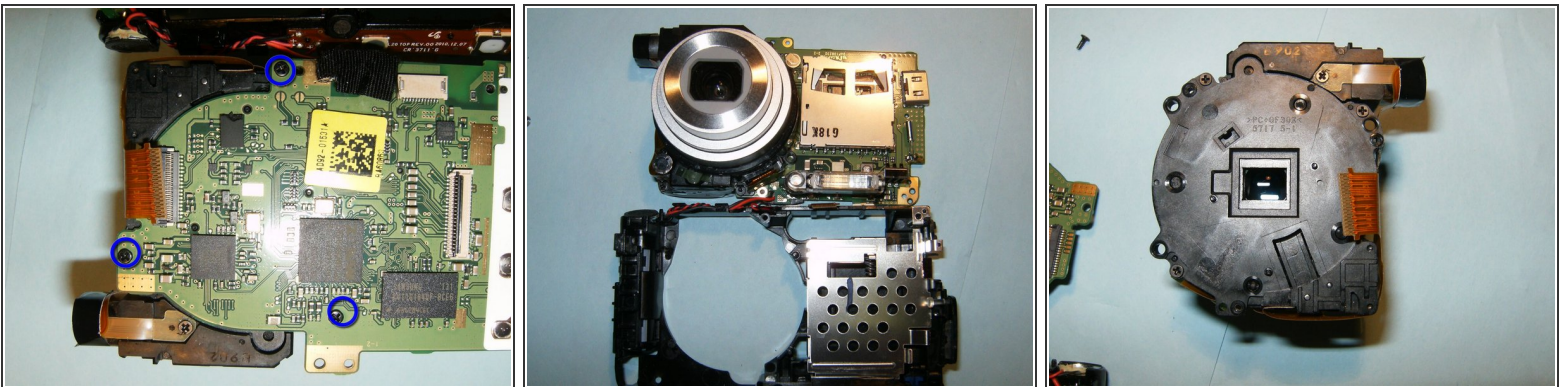
- Gently pull the front panel from the device.
- Remove the two screws attaching the LCD screen holder to the device.
- Remove the screen holder from the rest of the device.

Step 5



- Flip the grey clip upwards, releasing the connector from the device.
- Disconnect the ribbon cable extending from the left side.
- Disconnect the ribbon cable extending from the button bar.
- Remove the 2 screws.

Step 6



- Remove these 3 screws, releasing the lens from the logic board.
- Remove the lens from the logic board.

To reassemble your device, follow these instructions in reverse order.