



# Samsung PL200 LCD Screen Replacement

This guide for the Samsung PL200 is for replacing the LCD screen.

Written By: Jacob Presnell



## INTRODUCTION

Replace the LCD screen on your Samsung PL200 to replace a broken, cracked or frozen screen.



### TOOLS:

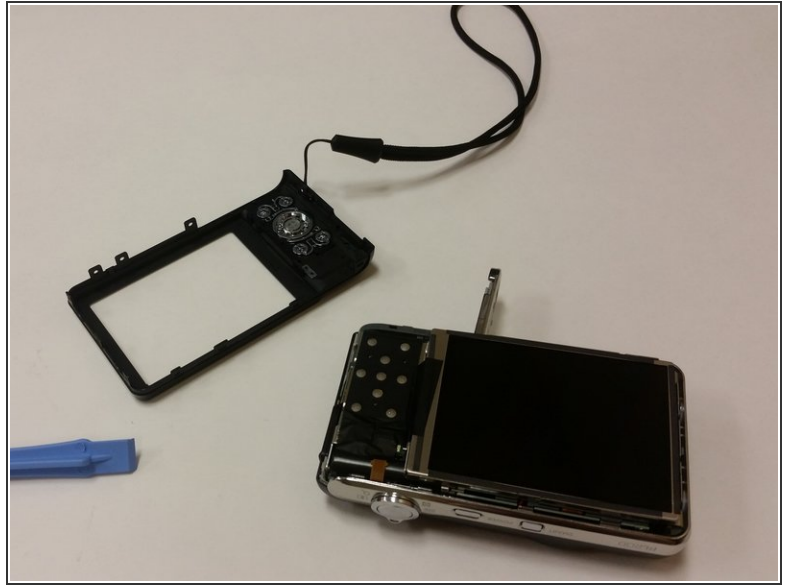
- [Phillips #000 Screwdriver](#) (1)
- [iFixit Opening Tools](#) (1)



### PARTS:

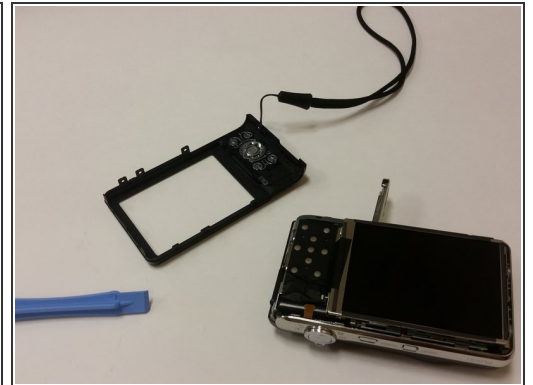
- [Samsung PL200 LCD Display](#) (1)

## Step 1 — LCD Screen



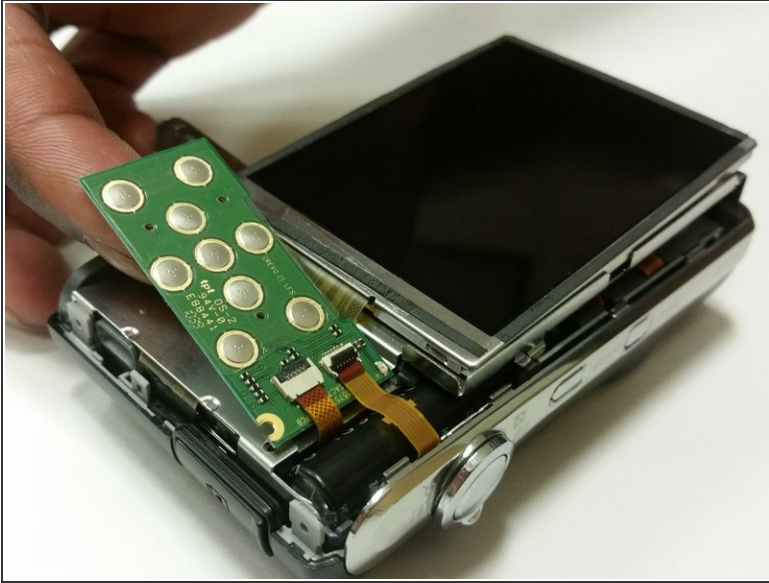
- Remove the six 3mm external screws from the camera using the Phillips #000 screwdriver.
- After the external screws have been removed the back half of the external case should be able to be taken from the camera.

## Step 2



- Use the plastic opening tools and your fingers to pull the external cover off.

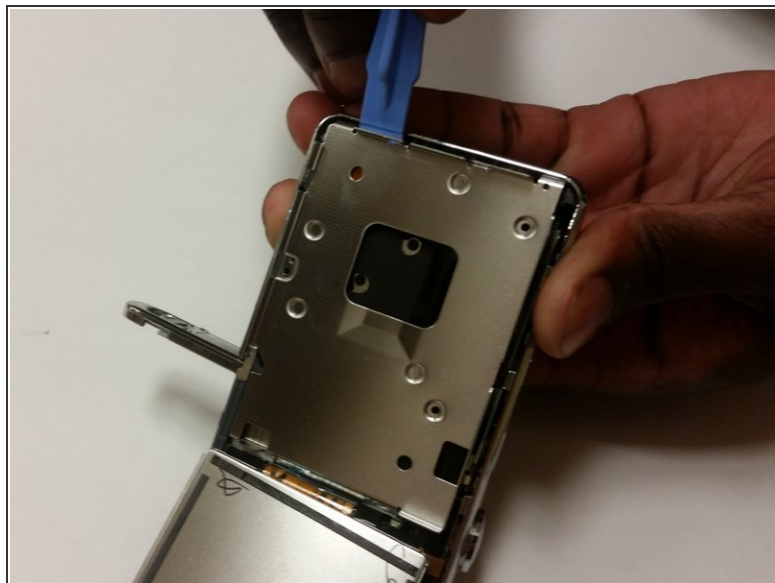
## Step 3



- Remove the 3mm screw holding the circuit board.
- Remove the circuit board.

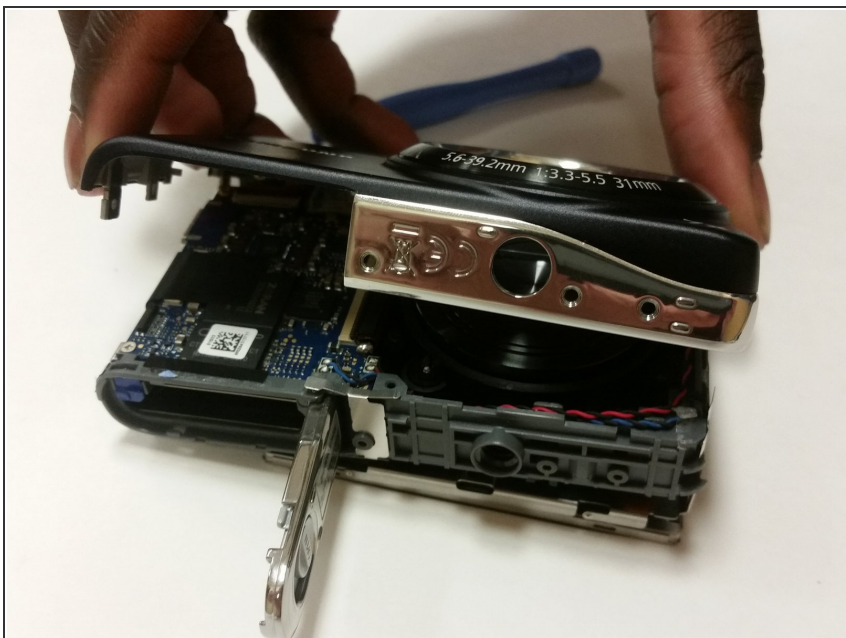


## Step 4



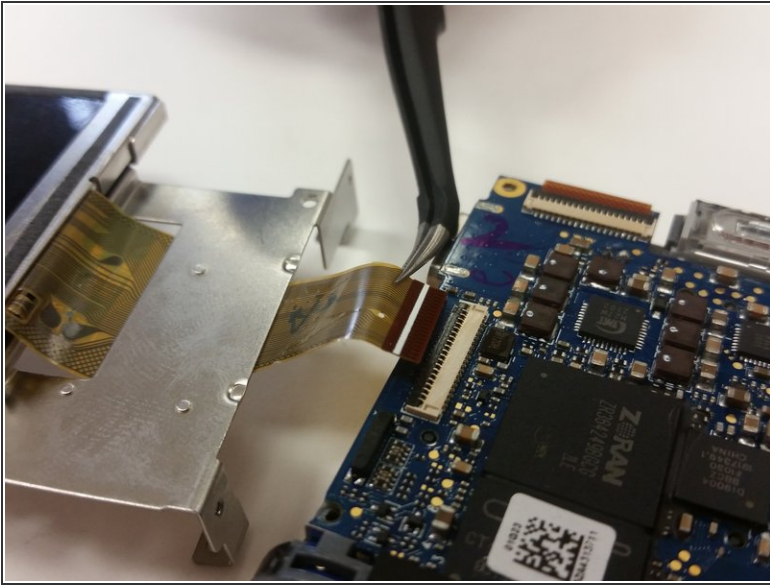
- Flip the LCD screen forward and remove the two 3mm screws holding the back brace using a #000 Phillips screwdriver.
- Remove the brace.

## Step 5



- Remove the front cover. It should come off fairly easily.

## Step 6



- Lift the black strip and the ribbon should easily come out.
- After doing this, the LCD screen should be separated from the camera.

To reassemble your device, follow these instructions in reverse order.