



Samsung PL200 Lens Replacement

A simple guide to replacing the lens unit in your Samsung PL200.

Written By: Weston Tracey



INTRODUCTION

This guide requires opening up your Samsung PL200 to access and replace the lens unit. You will need a #000 Phillips Screwdriver and a Plastic Opening Tool.



TOOLS:

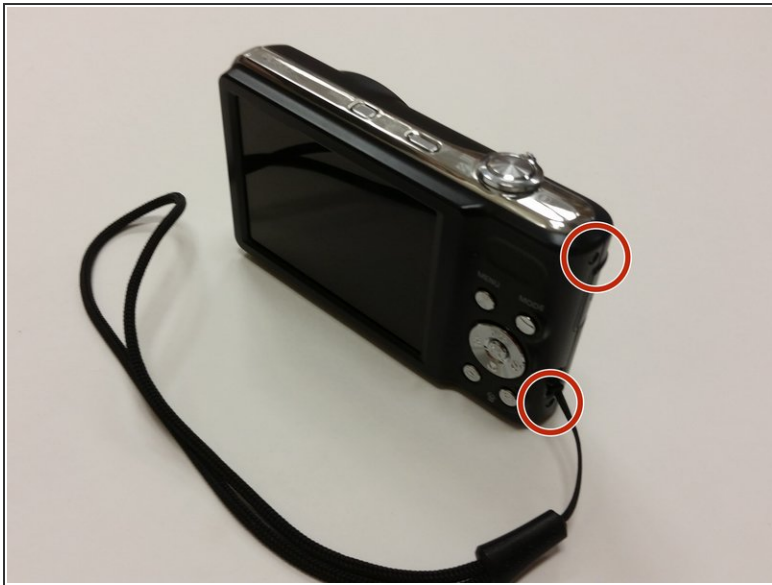
- [Phillips #000 Screwdriver](#) (1)
- [iFixit Opening Tools](#) (1)
- [Tweezers](#) (1)



PARTS:

- [Samsung PL200 Lens Unit](#) (1)

Step 1 — Lens



- Remove the two black 3mm external screws from the side of the camera using a Phillips #000 Screwdriver.
- Remove the 5 silver 3mm external screws from the camera's side and bottom using the #000 Phillips Screwdriver.

Step 2



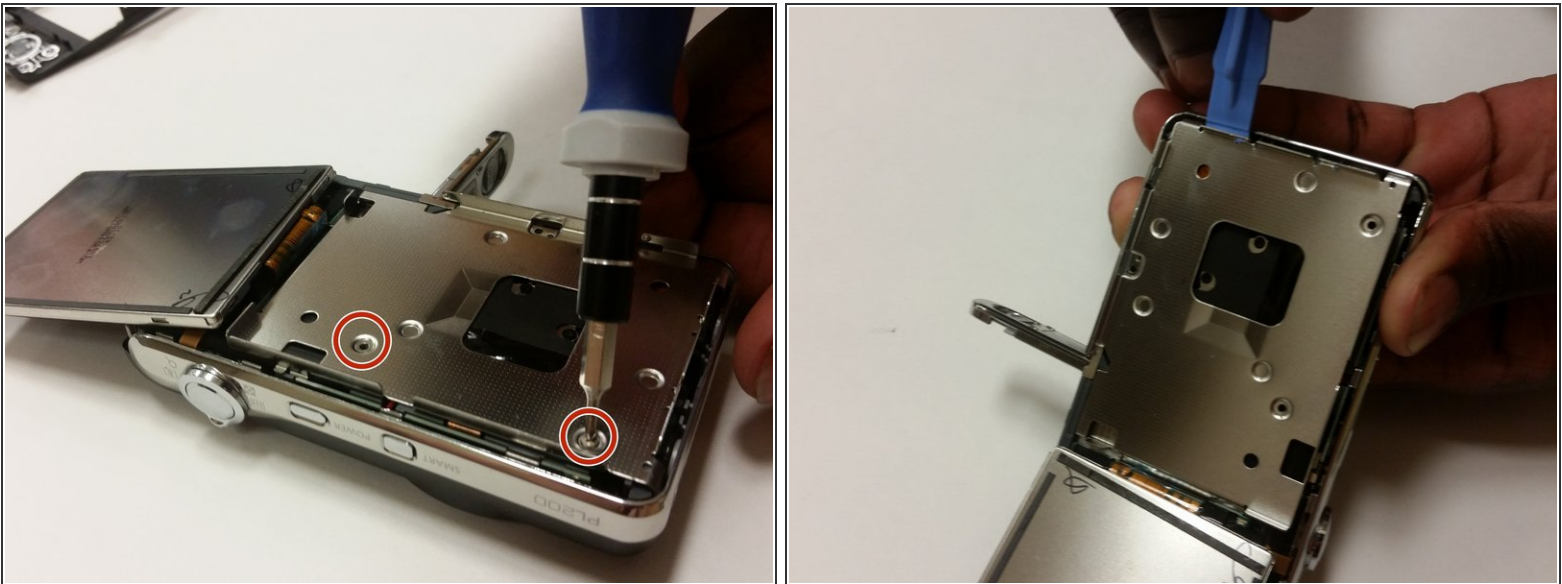
- Use the Plastic Opening Tool and your fingers to pry off and remove the external cover.

Step 3



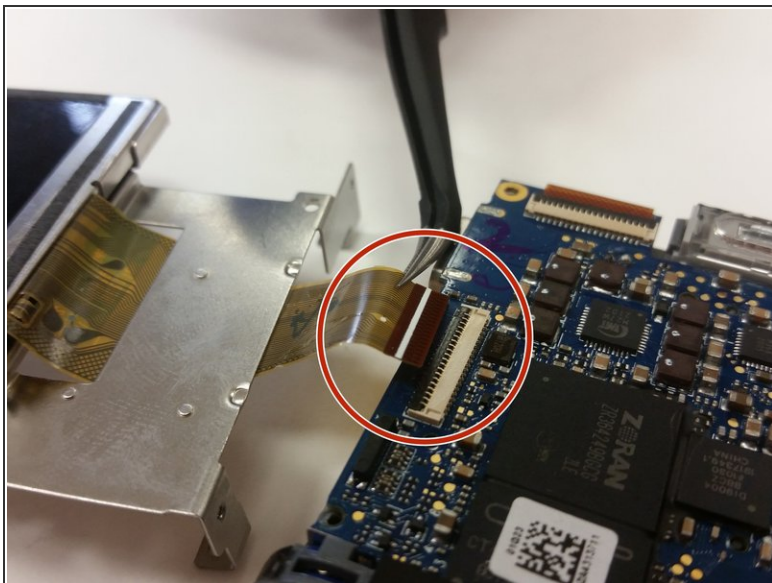
- Using a #000 Phillips head screwdriver, remove the 3mm screw holding the circuit board in place.
- Remove any tape on the circuit board and screen. It is unnecessary and can be thrown away.
- Using Tweezers, unplug the wires from the circuit board and remove it.

Step 4



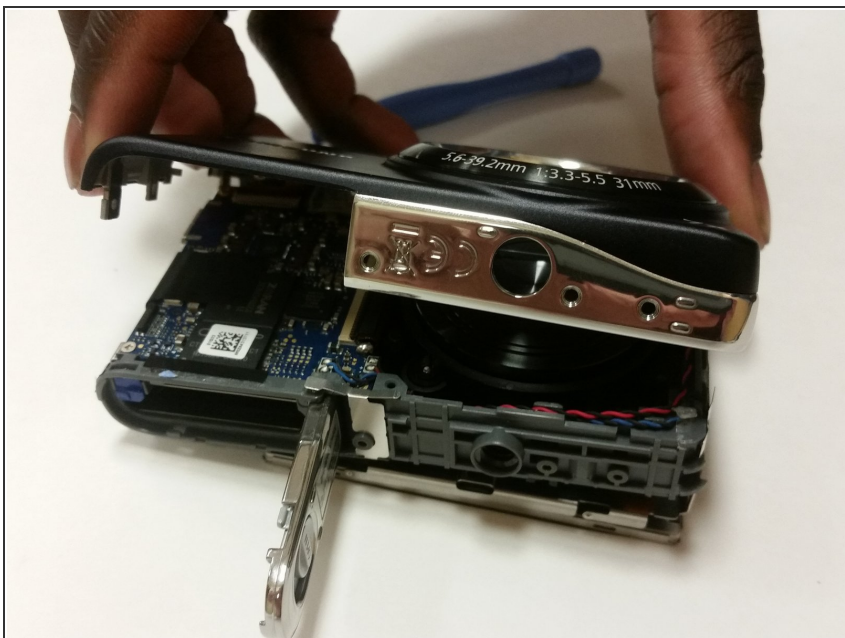
- Flip the LCD screen forward. Using the #000 Phillips head screwdriver remove the two 3mm screws beneath the LCD screen.
- Remove the metal brace using the Plastic Opening Tool.

Step 5



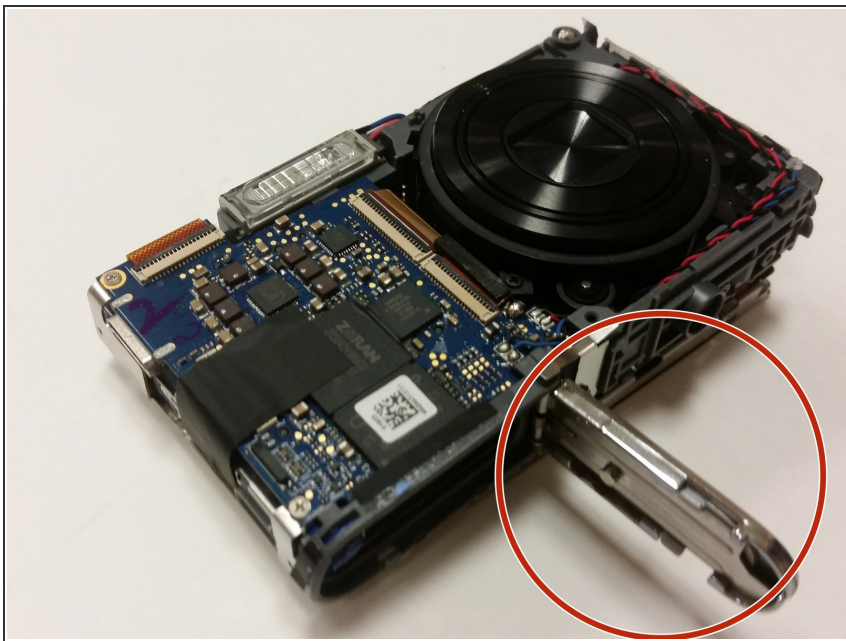
- Where the screen plugs into the motherboard lift the black latch and pull the cord to remove the screen.
- Separate the screen and the metal brace from the camera body.

Step 6



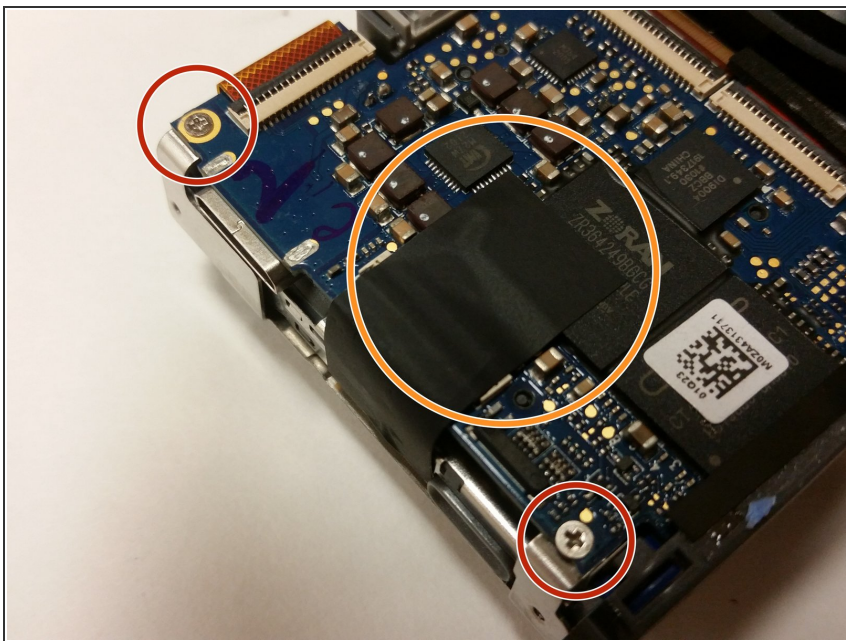
- Remove the front cover of the camera using your fingers and the Plastic Opening Tool.

Step 7



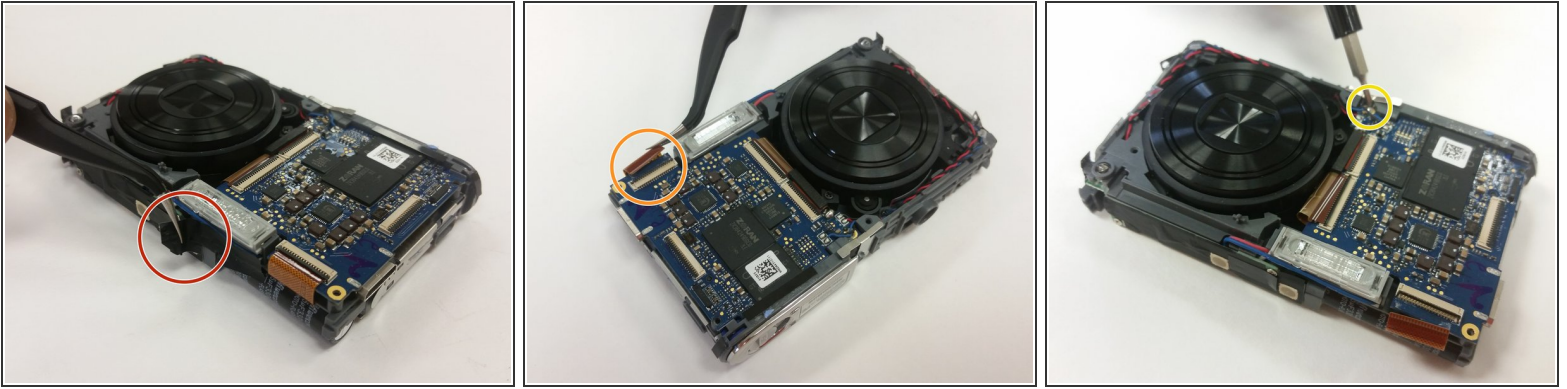
- Set the screen and metal brace aside.
- Open the camera's battery compartment.

Step 8



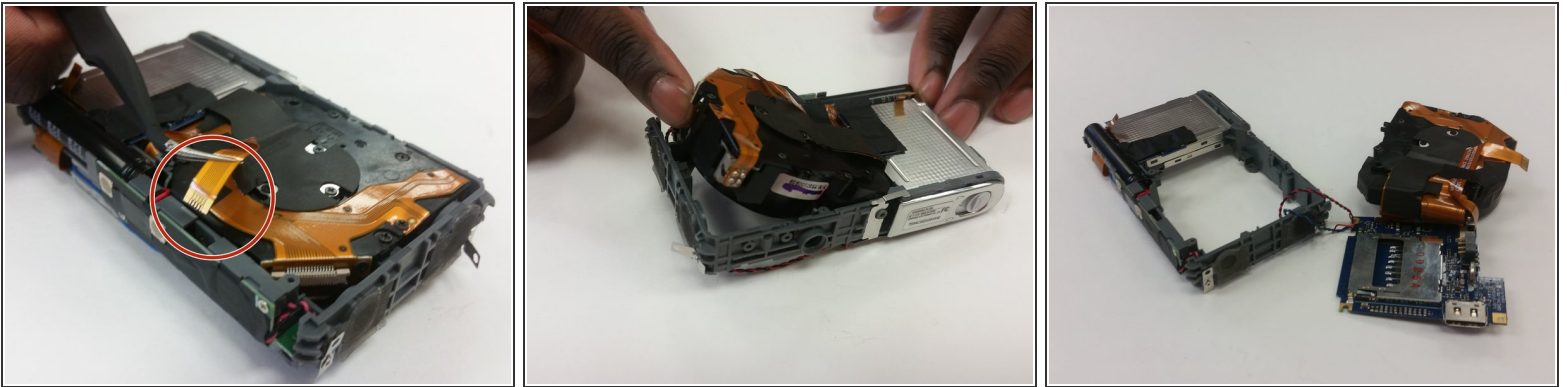
- Using the #000 Phillips head screwdriver, remove the two 3mm corner screws holding the motherboard in place.
- There may be tape still on the motherboard, if so, remove it.

Step 9



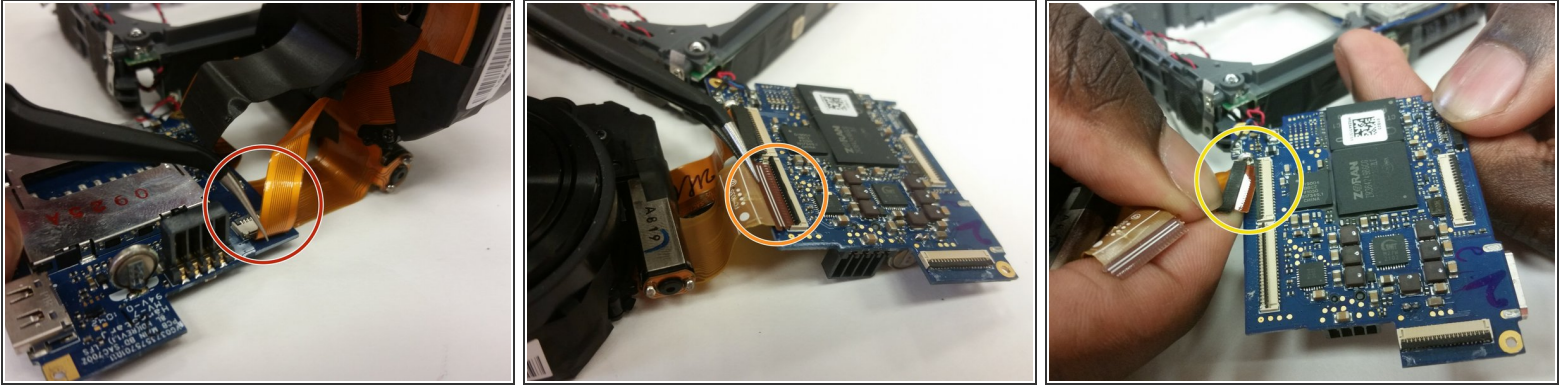
- Use tweezers to remove the tape from the bottom of the camera.
- Use the Tweezers to disconnect the lens unit cord that is at the bottom of the camera from the motherboard.
- Remove the last 3mm screw that holds the motherboard in place.

Step 10



- On the backside of the camera, use tweezers to unplug the small lens unit cord from the camera frame.
- Gently lift the lens unit from the frame.
- Separate the lens unit, motherboard, and camera.

Step 11



- Use tweezers to remove the small cord from the motherboard.
- Use the Tweezers to remove the first large lens unit cord from the motherboard.
- Use the Tweezers to remove the second large lens unit cord from the motherboard.

Step 12



- You have now separated the lens unit, replace it with a functional lens unit at this stage and reassemble the device.

To reassemble your device, follow these instructions in reverse order.