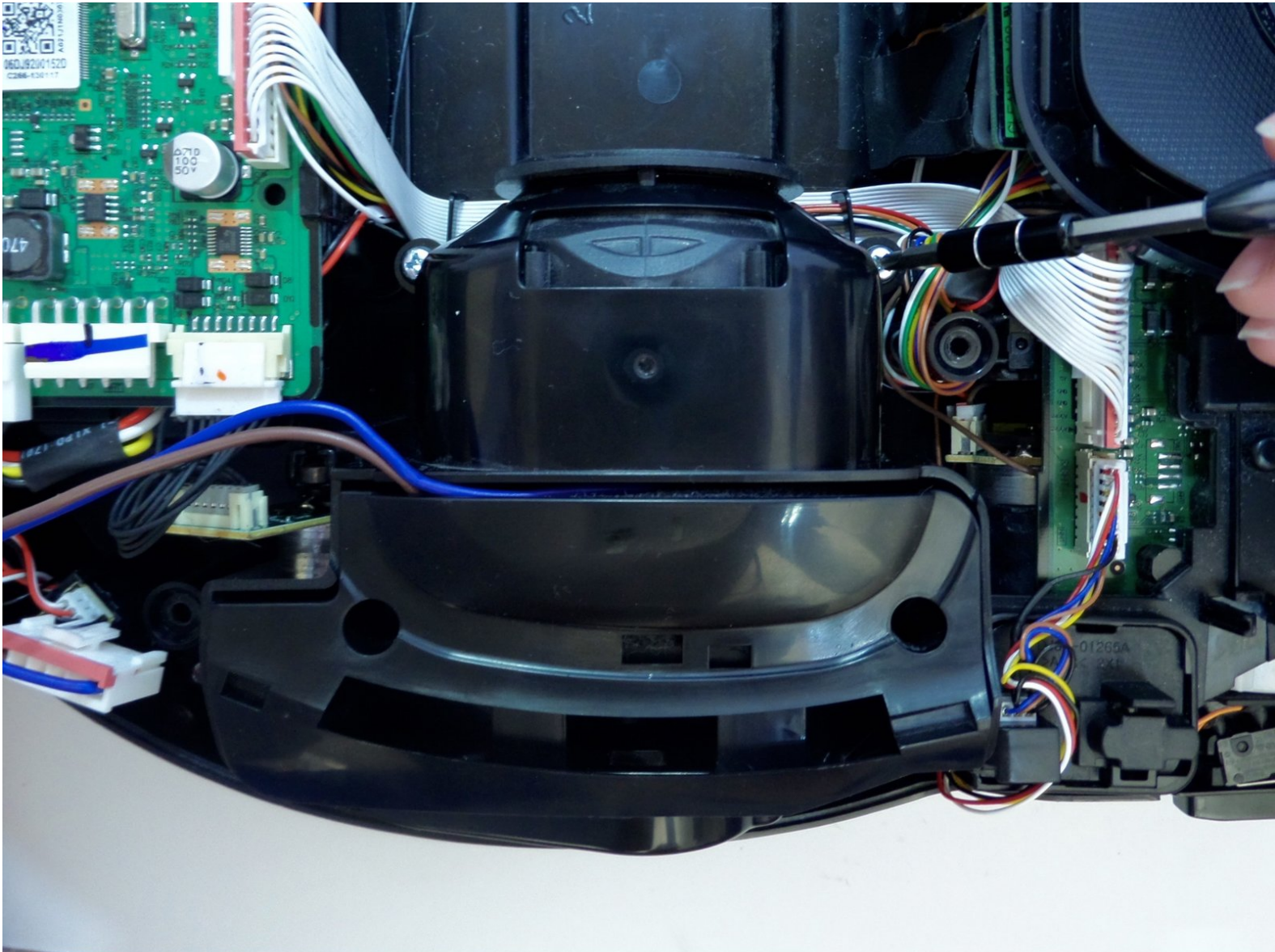




# Samsung POWERbot R7070 Vacuum Motor Replacement

Accessing and replacing the motor.

Written By: Eric Anderson



---

## INTRODUCTION

Replace the motor to mobilize and restore suction power to your POWERbot. The motor will need to be removed to access the Right Driving Wheel.



### TOOLS:

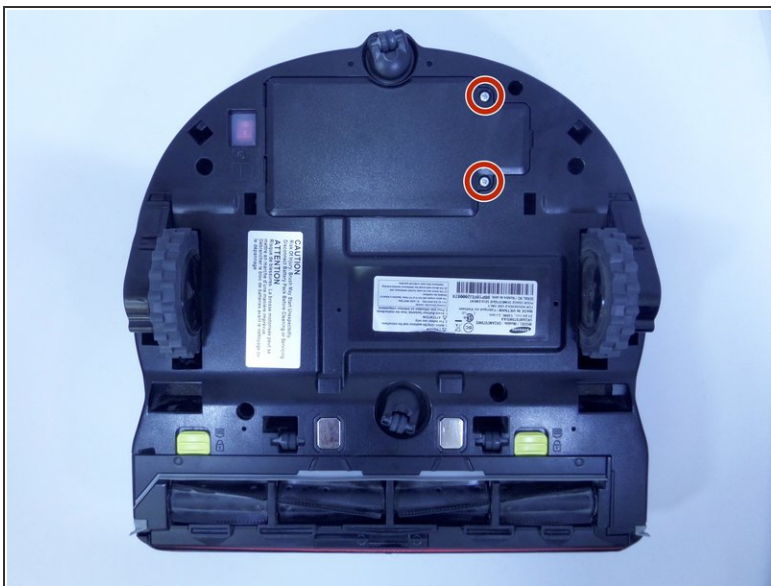
- [Phillips #1 Screwdriver](#) (1)
-

## Step 1 — Battery



- Turn the emergency switch off.

## Step 2



- Remove the two exposed screws on the top right of the device.

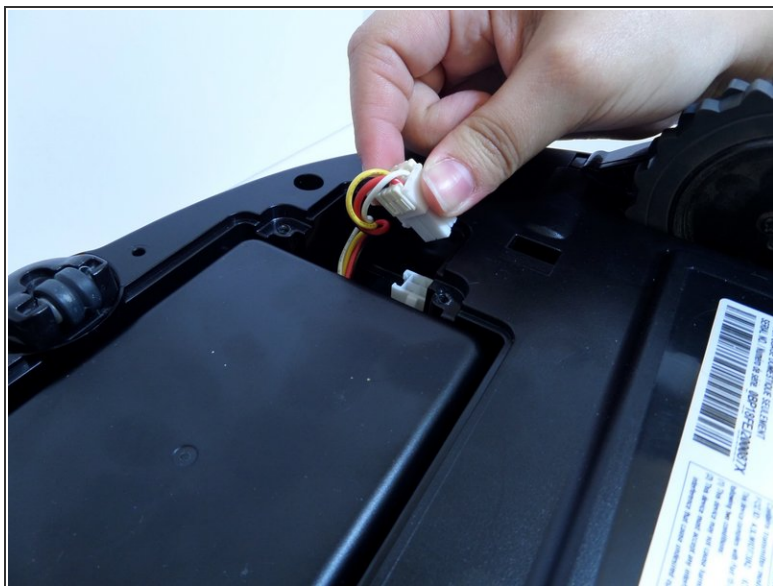


### Step 3



- Lift the cover plate to expose the battery.

### Step 4



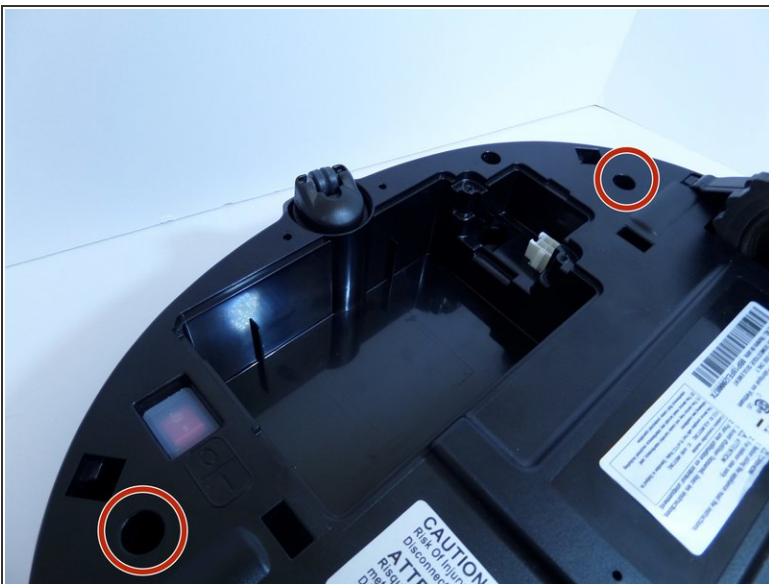
- Using one hand, pinch the white plastic connector where the battery's wiring connects the POWERbot. Pull up to disconnect.

## Step 5



- Lift the battery from the right side, up and out of its compartment.

## Step 6 — Motor



- Unscrew the two silver 1.5 cm screws on the left and right side of the battery compartment.
- Remove the two 1.5 cm screws above the yellow sliding lock tabs.
- Remove the two 1.2 cm screws in the brush compartment.



## Step 7



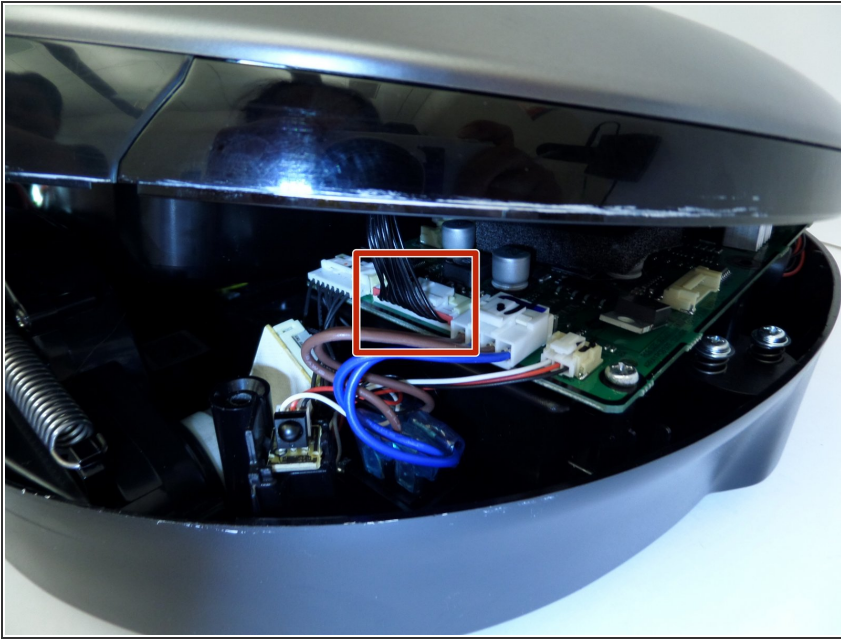
- With moderate force, separate the silver top from the black bottom of the vacuum.
- ⓘ The cover will only separate a few inches as the two halves are connected by wires.

## Step 8



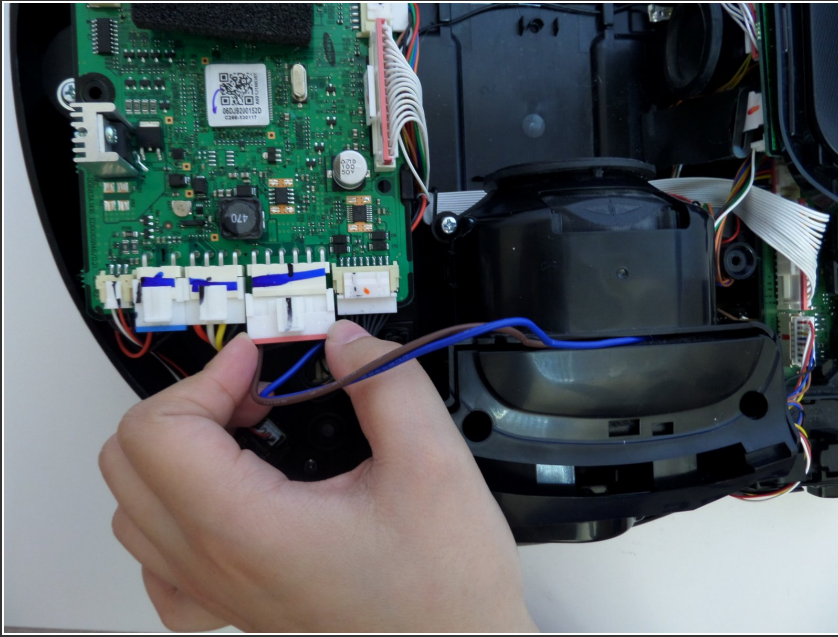
- Disconnect the white and red wired connector attached to the top half of the base of the vacuum by squeezing the connector and pulling up.

## Step 9



- Pinching the top and bottom of the black wired connector, pull outward, fully detaching the top from the bottom of the device.

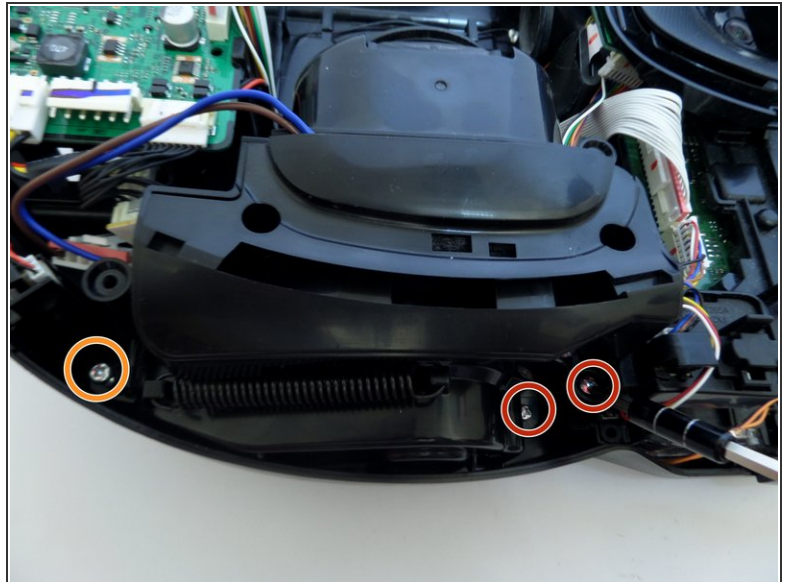
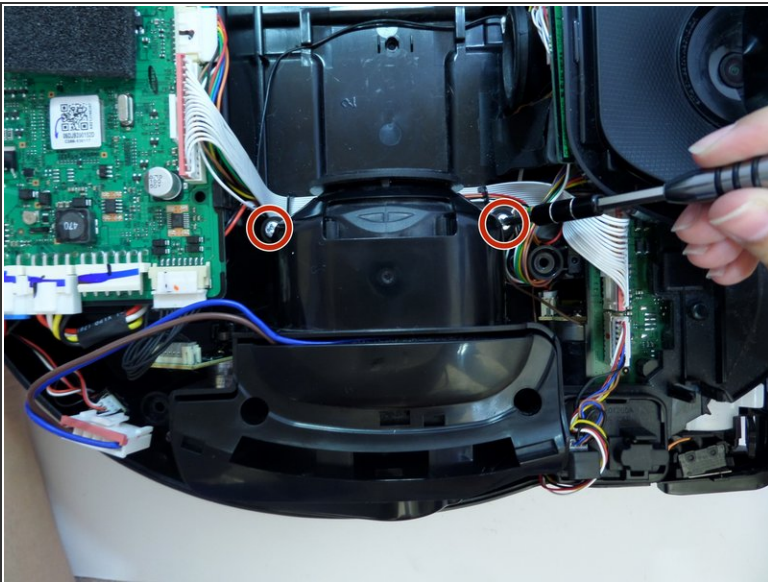
## Step 10



- Detach the wide circuit connector on the left side by pinching and pressing down on the right and left side of the clip, pulling the connector out.

⚠ Pull the connector out by the left and right side of the white clip and not by the wires.

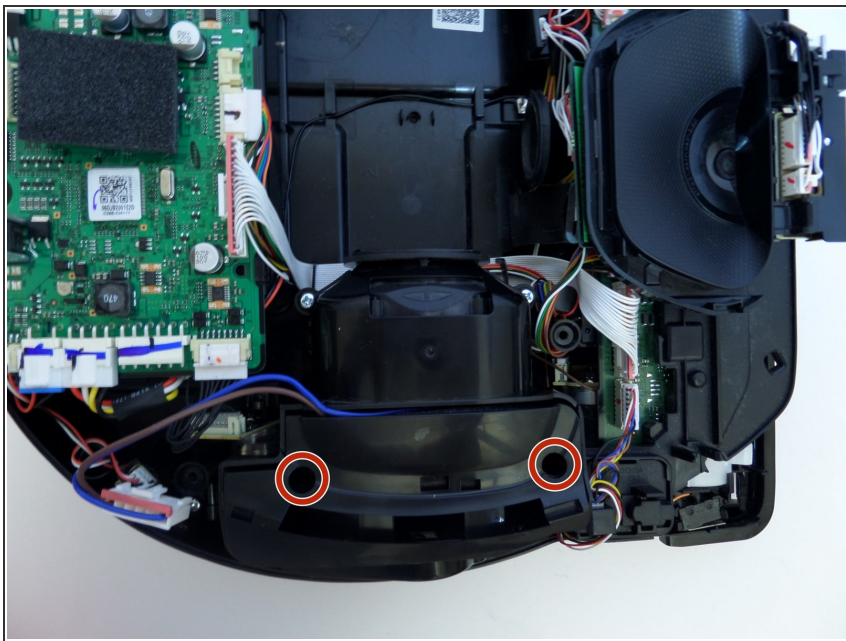
## Step 11



- Remove the four 1.2 cm screws.
- Remove the single 0.8 cm screw.

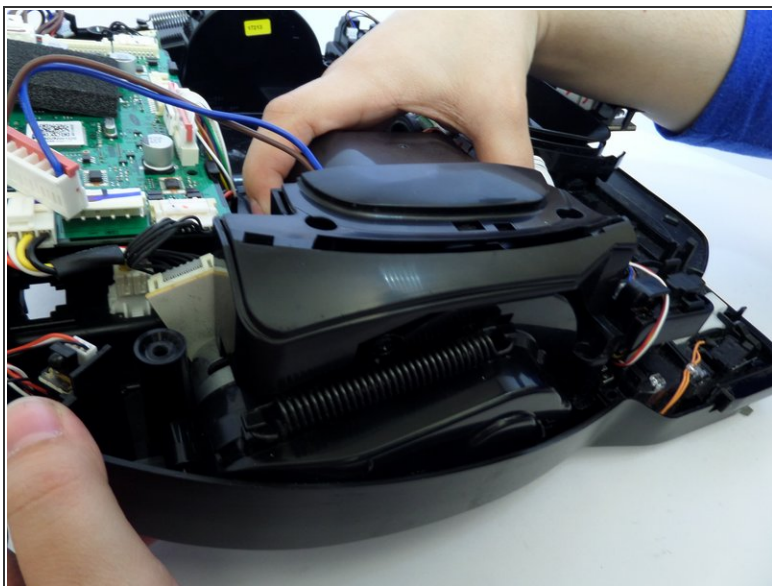


## Step 12



- Remove the two 1.5 cm screws on the motor chamber.

## Step 13



- Lift the motor by grabbing the body of the motor, lifting upward.

⚠ With the screws removed from the motor chamber the top of the motor chamber will pop open.

To reassemble your device, follow these instructions in reverse order.