



# Samsung Portable Dualband Tri-Mode Keypad Replacement

Use this repair guide to replace the keypad on a Samsung Portable Dualband Tri-Mode.

Written By: Barbara



## INTRODUCTION

If the keypad buttons are not responding or are functioning in a way that is different from their intended purpose, then it is possible that the keypad may be damaged. This guide shows how to check the keypad and, if necessary, replace it.



### TOOLS:

- [Tweezers](#) (1)
  - [T6 Torx Screwdriver](#) (1)
-

## Step 1 — Battery



- Slide the battery out from the battery compartment on the back of the phone.

## Step 2 — Antenna



- Unscrew the antenna top.



## Step 3



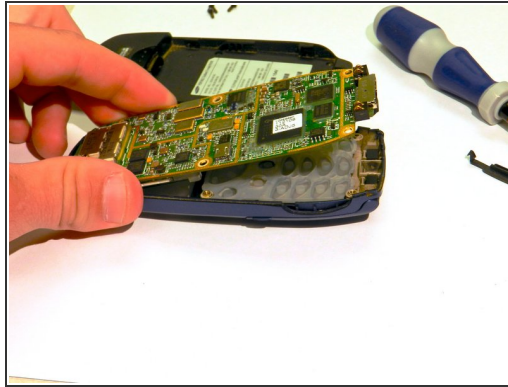
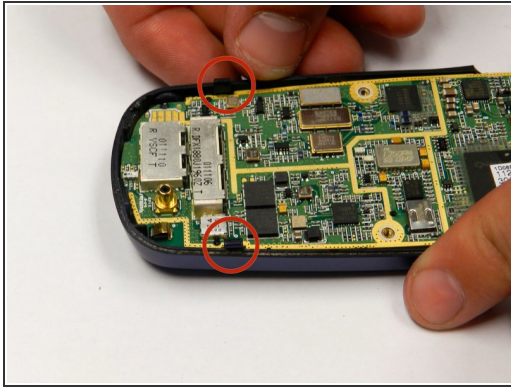
- Clasp the antenna with tweezers and push toward the top.
- Remove the antenna.

## Step 4 — Backplate



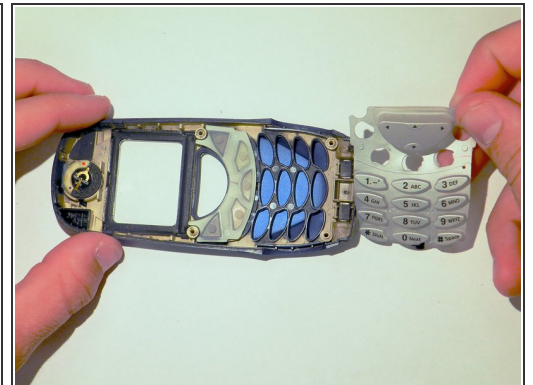
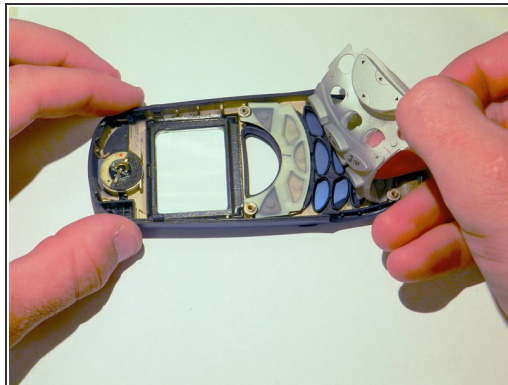
- Remove the four screws (3 mm) from the battery compartment.
- Press the release buttons located on the side of the phone while gently prying the back plate off.

## Step 5 — Motherboard



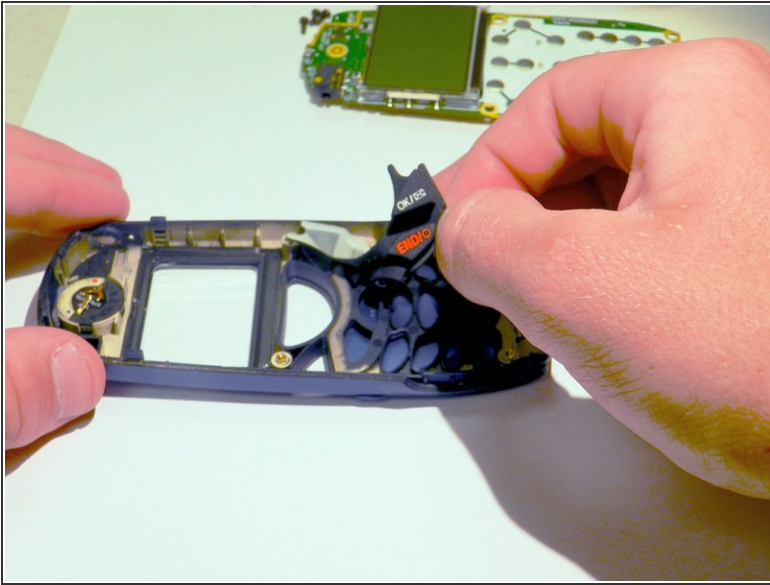
- Press the release tabs on the sides of the back casing.
- Gently pry the motherboard loose and remove it.

## Step 6 — Keypad



- Remove the gray keypad from the phone by peeling it back.

## Step 7



- Remove the black keypad from the phone casing.
- Clean the keypad and check for any damage. If the keypad is damaged, then replace it with a new one.

To reassemble your device, follow these instructions in reverse order.