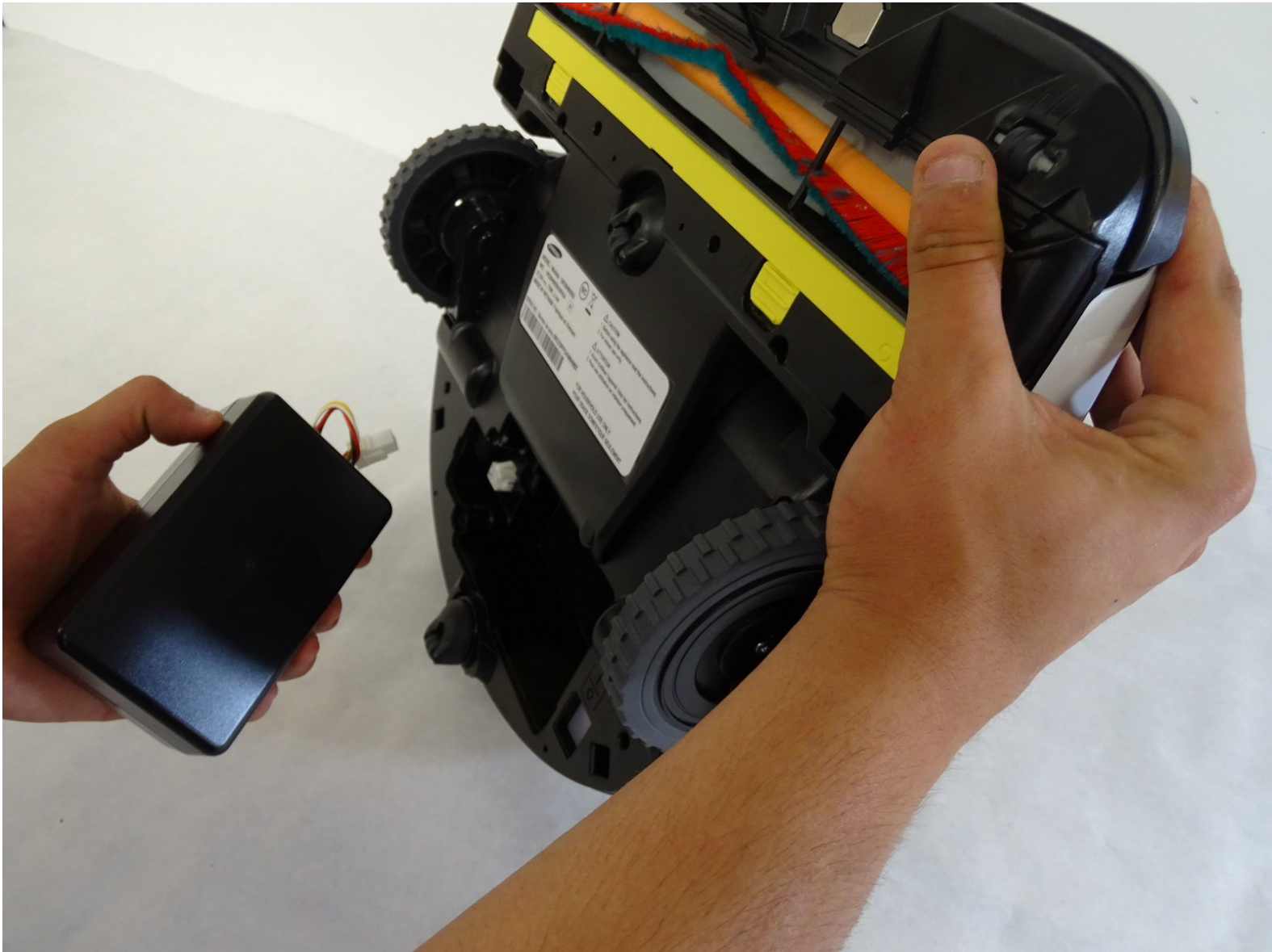




Samsung Powebot VR9000 Battery Replacement

How to remove and replace the battery for the Samsung Powerbot VR9000.

Written By: Alexandra Jensen



INTRODUCTION

This guide will teach you how to replace the battery of your POWERbot. This can be done to fix your POWERbot's charge retention issues.

TOOLS:

- [Phillips #1 Screwdriver](#) (1)
-

Step 1 — Battery



- Turn off the emergency switch located at the bottom right of the POWERbot.

Step 2



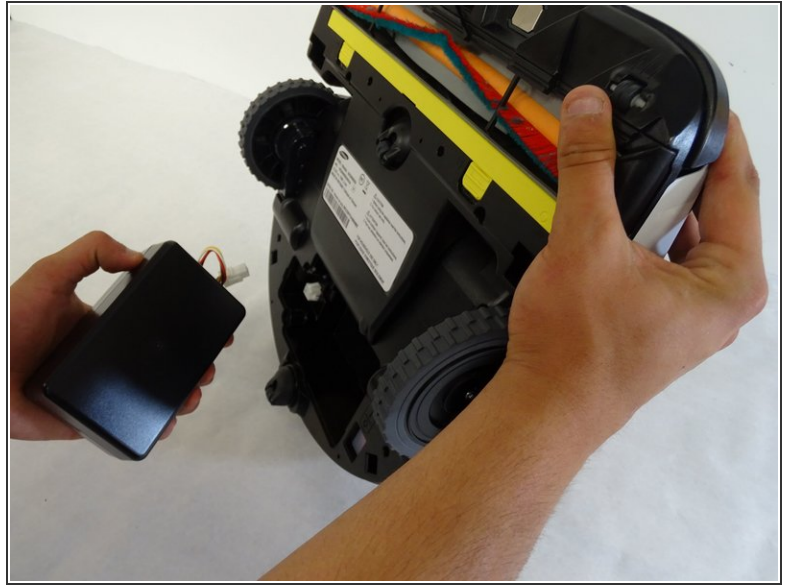
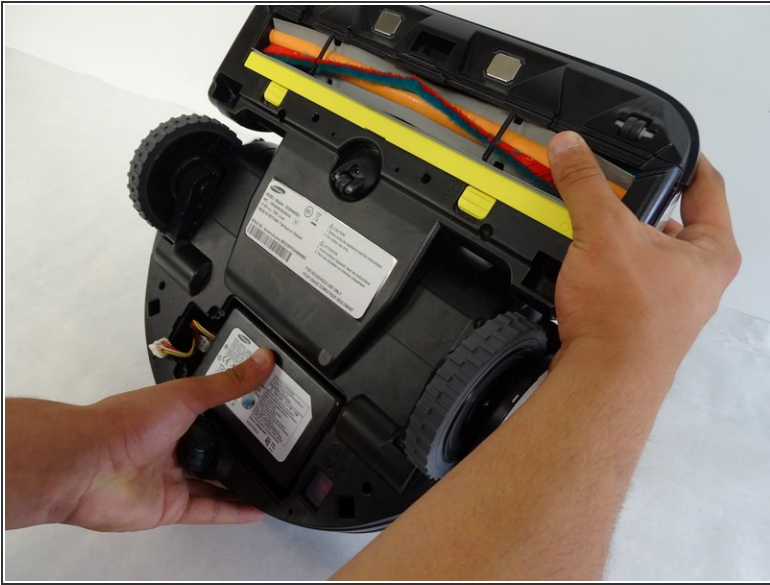
- Unscrew the two 6mm Phillips #1 screws and remove the lid, exposing the battery.

- ## Step 4



- Page 4 of 5

Step 5



- Remove the battery by holding the battery in place and partially righting the POWERbot so the battery falls out.

To reassemble your device, follow these instructions in reverse order.