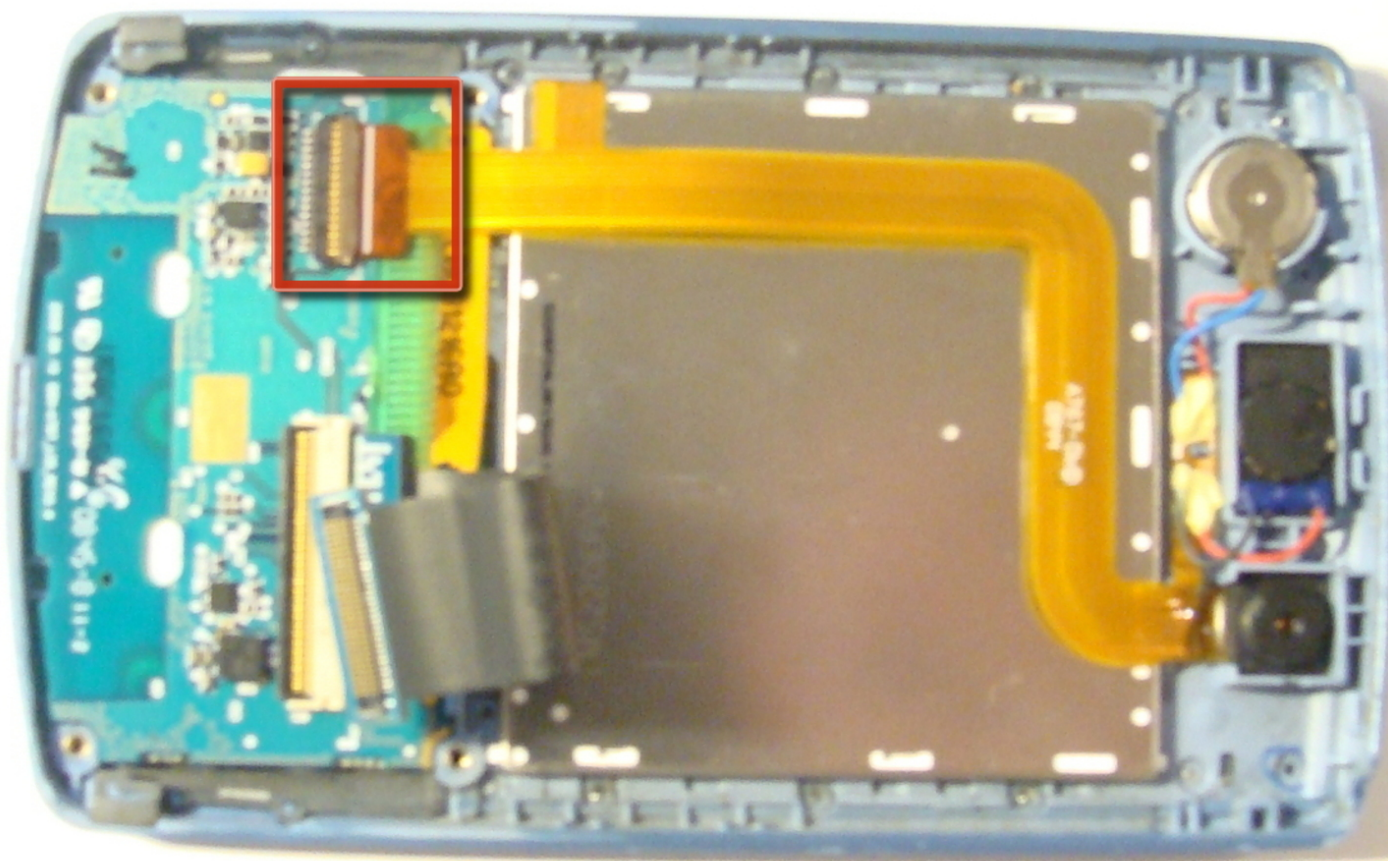




Samsung Propel Screen Replacement

Replacing Samsung Propel screen

Written By: Jin



INTRODUCTION

Use this guide to remove and replace the Samsung Propel screen.



TOOLS:

- [Phillips #00 Screwdriver](#) (1)
 - [Flathead 3/32" or 2.5 mm Screwdriver](#) (1)
-

Step 1 — Battery



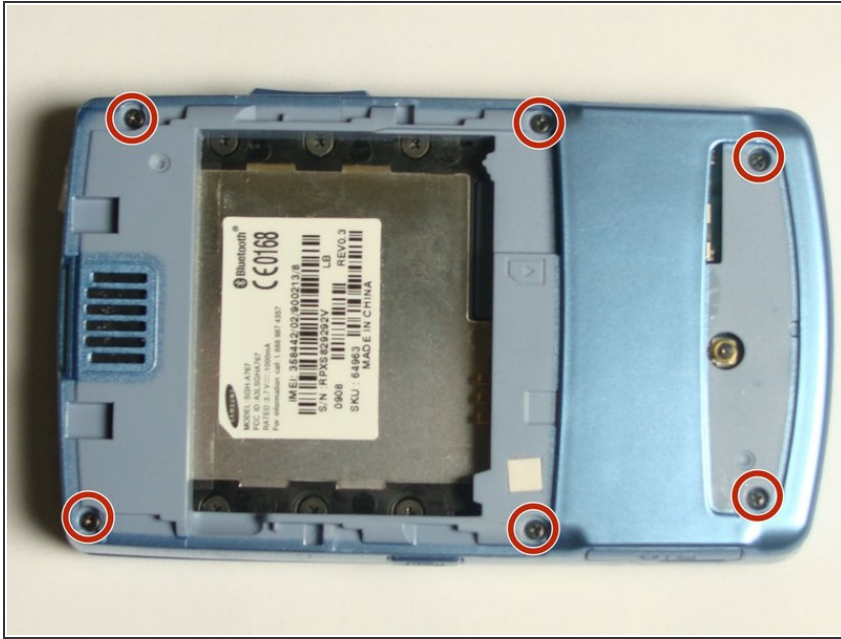
- Press down the back and push up to remove back cover.
- Insert finger into gap at the top left and remove battery.

Step 2 — Motherboard



- Use flat-head screwdriver to remove back lid.

Step 3



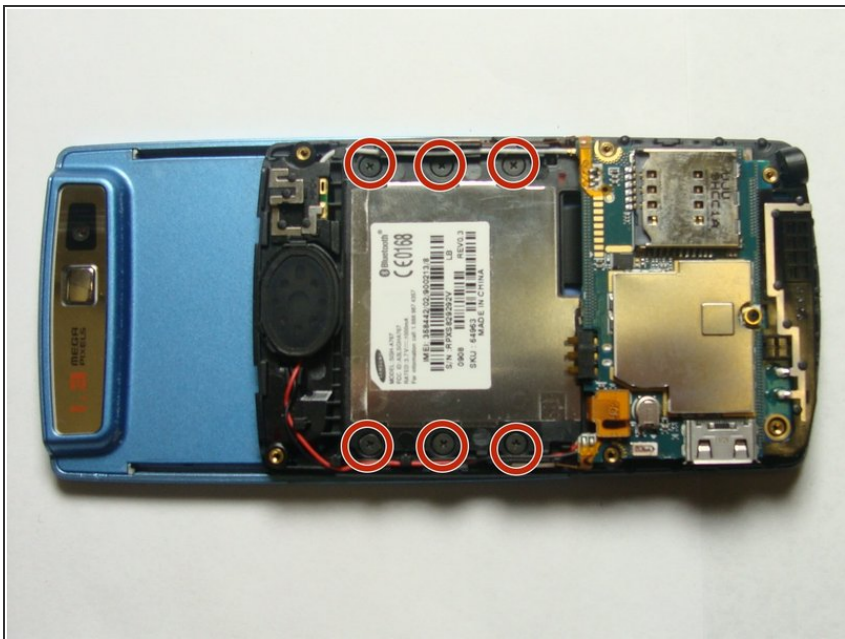
- Locate the six screws and remove them with Phillips #00 Screwdriver.

Step 4



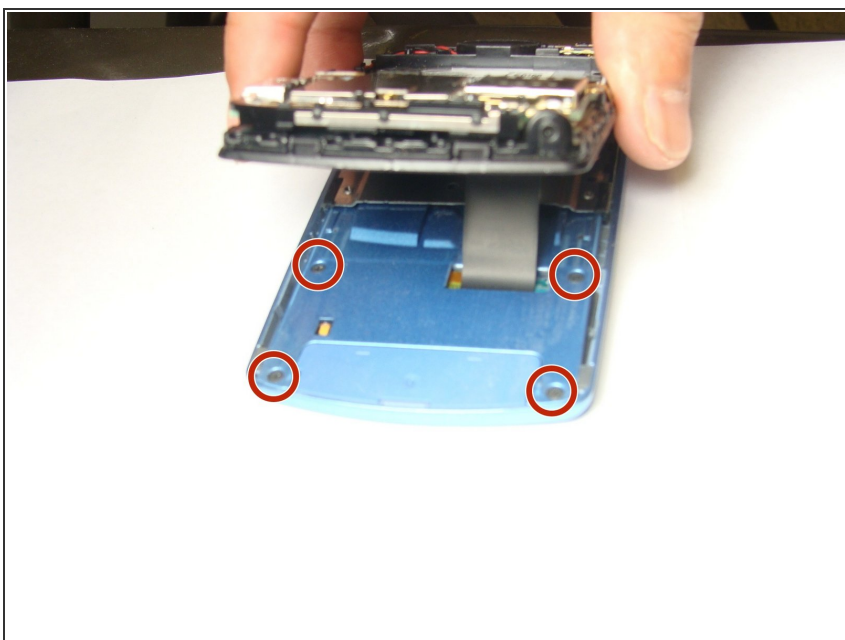
- Insert the flat-head screwdriver into the crevice.
- Slide and dislodge snap-ons under.
- Remove the back frame.

Step 5



- Locate and remove the six screws with Phillips #00 Screwdriver.
 - Separate the black middle frame from the front frame.
- ⚠ Be careful not to tear the phone bus.

Step 6



- Locate and remove the four screws with Phillips #00 Screwdriver.

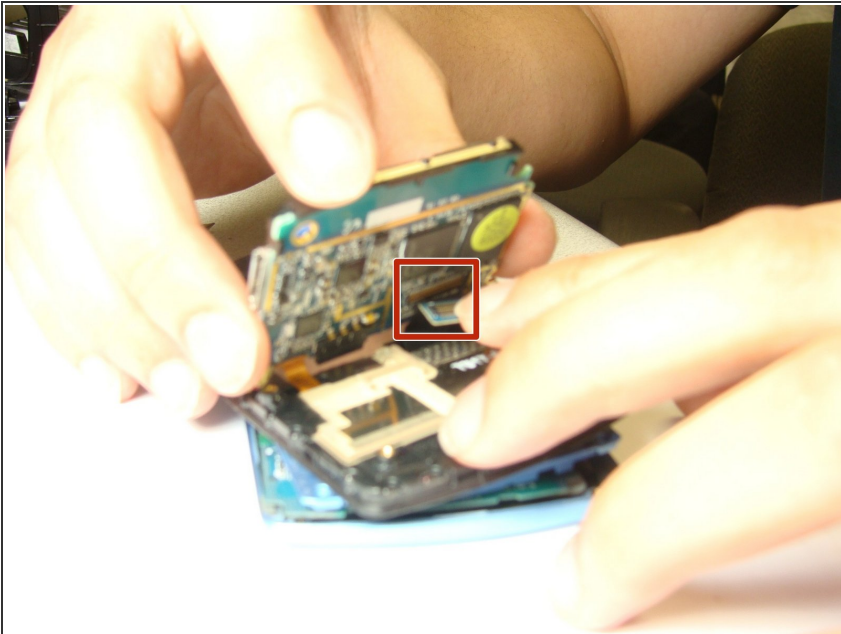
Step 7



- Insert the flat-head screwdriver into the crevice.
- Slide the flat-head screwdriver and dislodge the snap-ons under.

⚠ Be careful not to rip the band.

Step 8



- Use hands to remove both phone buses from the linkages, and remove motherboard.

Step 9 — Screen



- Flip and pull electric band from input.
- Remove the screen from the front frame.

To reassemble your device, follow these instructions in reverse order.