



# Samsung RC512 Back Panel Replacement

This is a prerequisite guide for any part replacement under the back panel.

Written By: Juri Ando



---

## INTRODUCTION

Back panel removal is required when reaching [RAM](#), [HDD](#), [Optic Drive](#), [Wi-Fi Card](#), [Cooling fan/Heatsink](#) and [CPU](#). This guide will display the steps needed to remove the back panel.

---



### TOOLS:

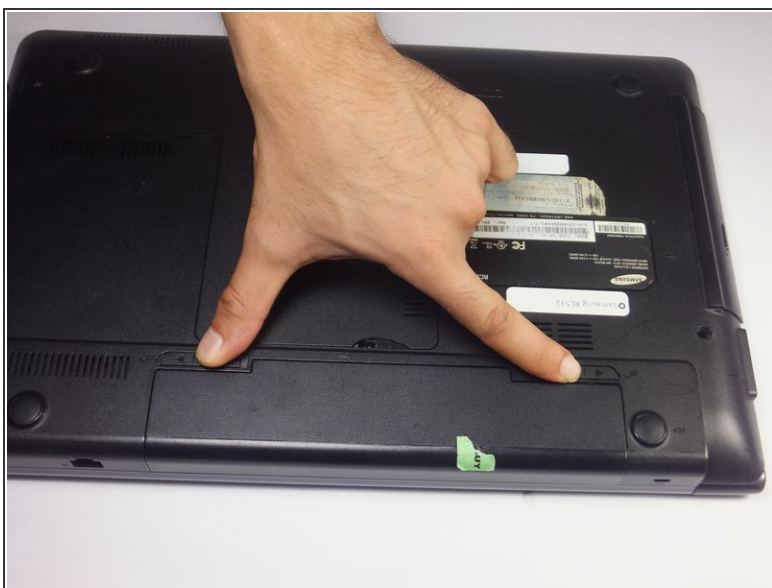
- [Phillips #0 Screwdriver](#) (1)
  - [iFixit Opening Tools](#) (1)
-

## Step 1 — Battery



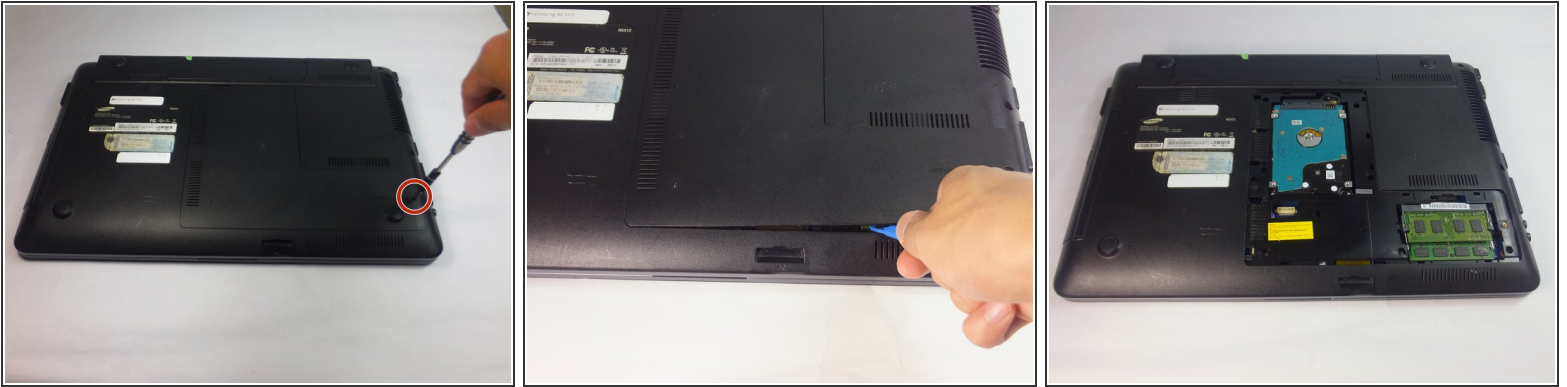
- Place the laptop upside down.

## Step 2



- Locate two notches above the battery.
- Slide both battery locking notches to either side to remove the battery.
- Pull the battery out.

## Step 3 — Back Panel



- Using the Phillips #0 screwdriver, unscrew the one 5mm screw.
- Using the blue plastic opening tools, wedge one in between the back panel and the laptop.
- Carefully remove the back panel..

To reassemble your device, follow these instructions in reverse order.