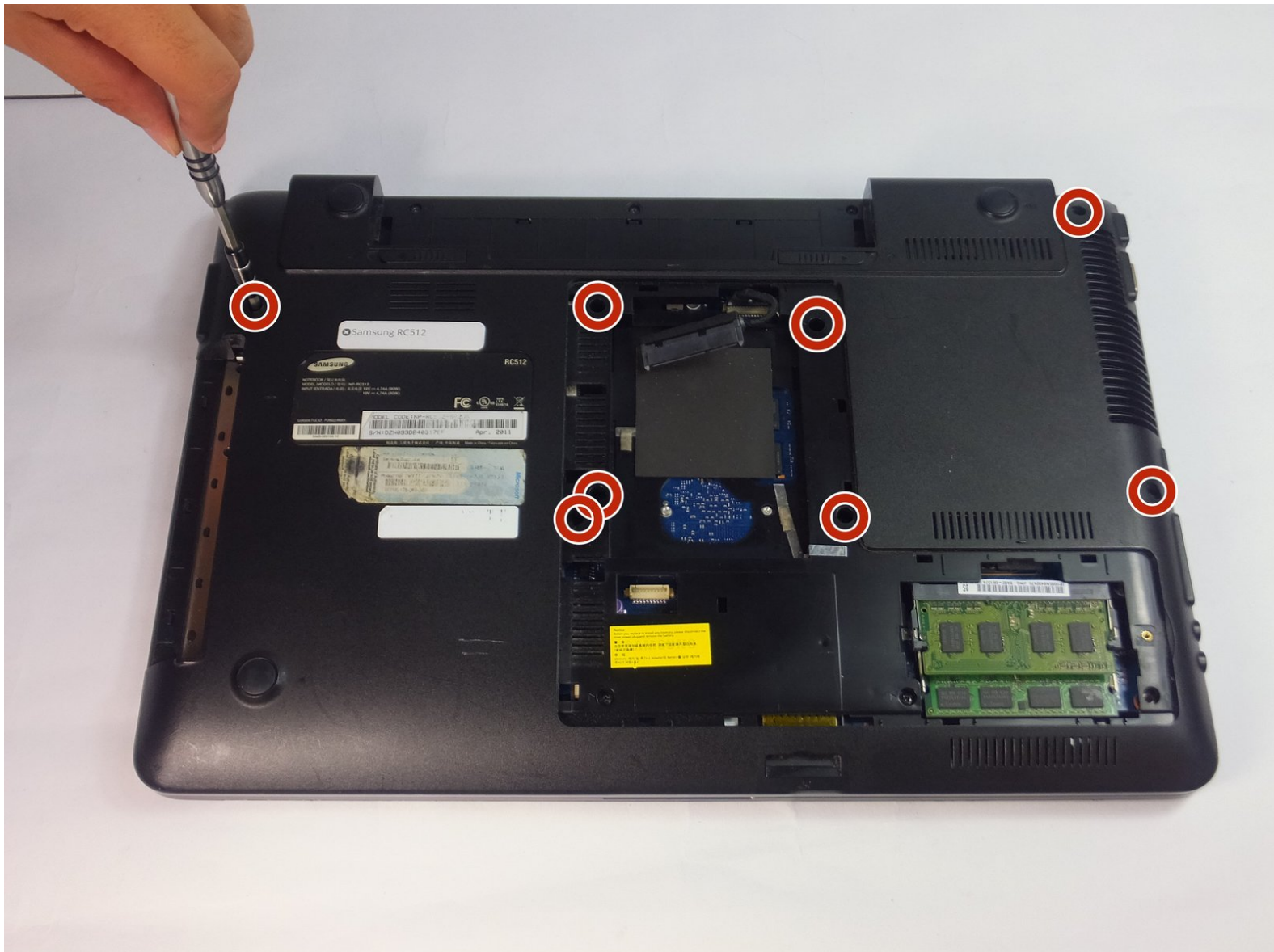




Samsung RC512 Cooling Fan/Heat Sink Replacement

This guide provides a simple walkthrough for replacing a cooling fan and heat sink on a Samsung RC512.

Written By: Juri Ando



INTRODUCTION

Cooling fan and heat sink cool off CPU. Faulty cooling fan leads to damaging the CPU and the computer will not function correctly. This guide will show steps to replace cooling fan and heat sink with new ones.

TOOLS:

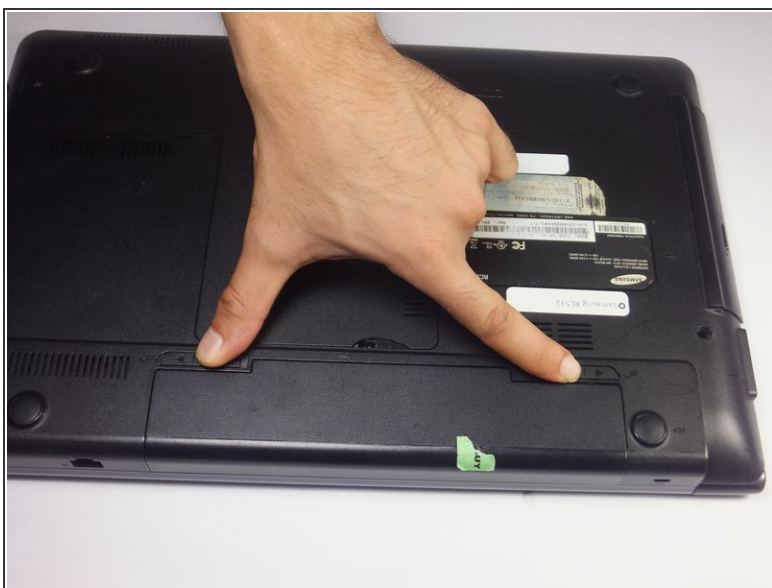
- [Phillips #0 Screwdriver](#) (1)
 - [iFixit Opening Tools](#) (1)
 - [Tweezers](#) (1)
-

Step 1 — Battery



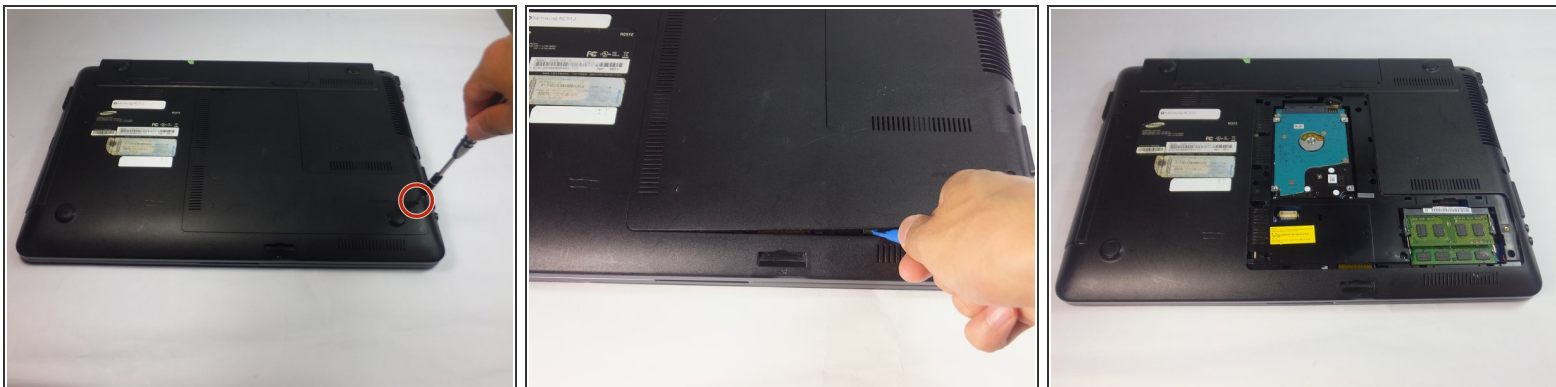
- Place the laptop upside down.

Step 2



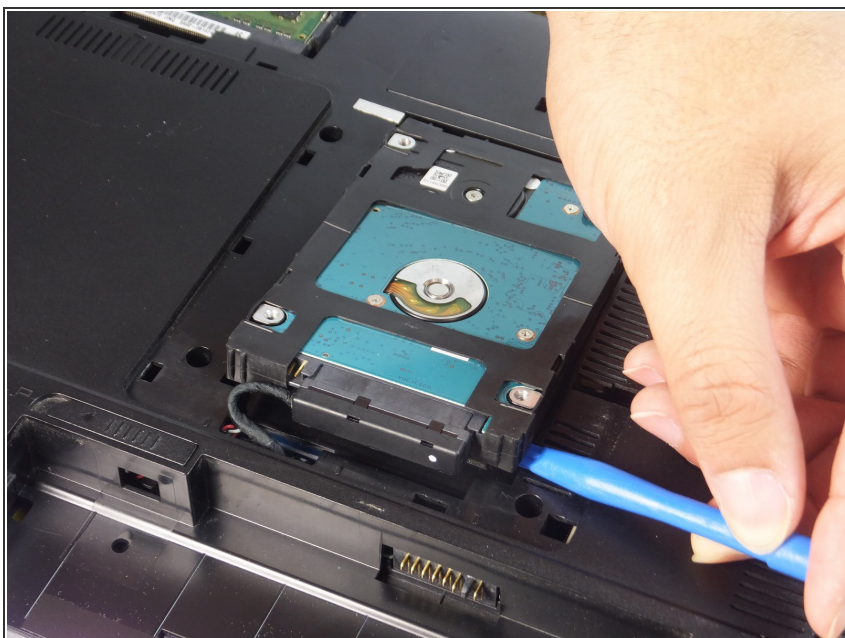
- Locate two notches above the battery.
- Slide both battery locking notches to either side to remove the battery.
- Pull the battery out.

Step 3 — Back Panel



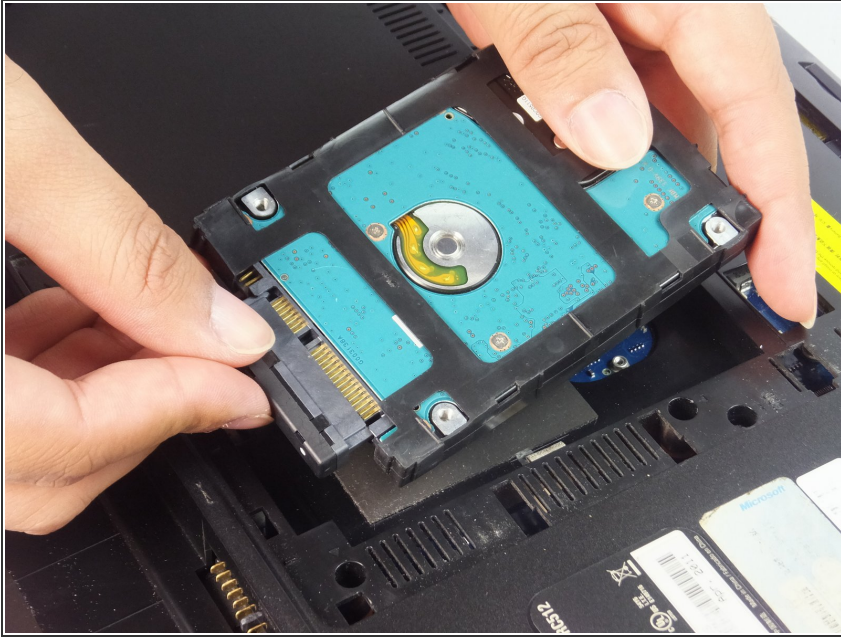
- Using the Phillips #0 screwdriver, unscrew the one 5mm screw.
- Using the blue plastic opening tools, wedge one in between the back panel and the laptop.
- Carefully remove the back panel..

Step 4 — HDD



- Carefully lift the HDD up using plastic opening tool.

Step 5



- Grab the HDD and connector.

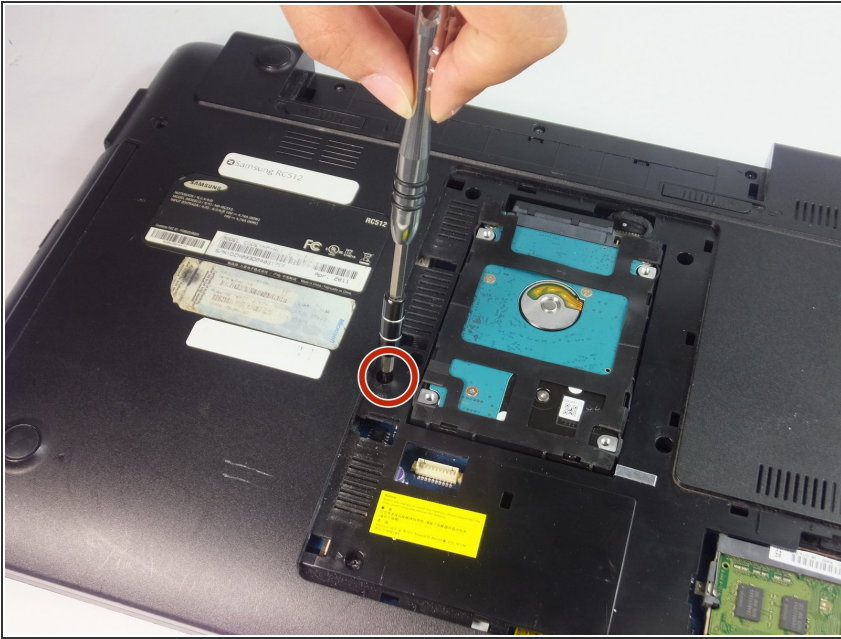
⚠ Carefully pull the HDD away from the connector.

Step 6



- Take out the HDD and leave the connector in the laptop

Step 7 — Optic Drive



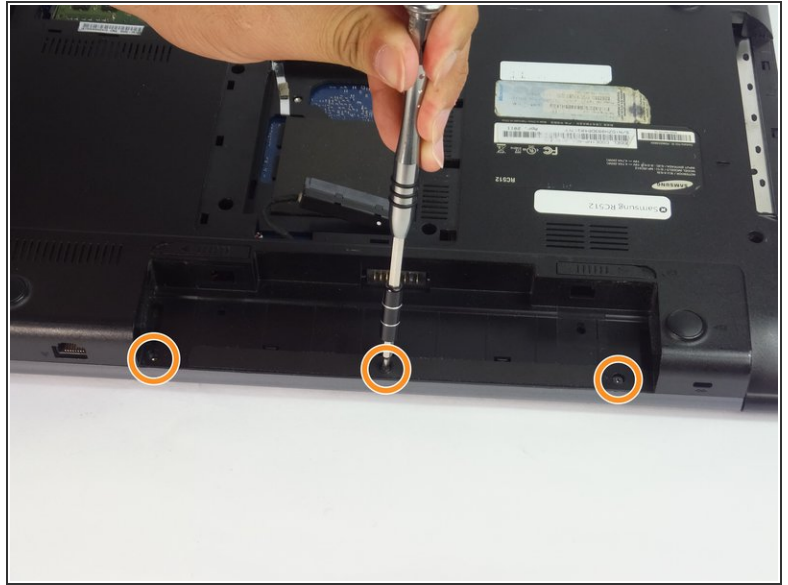
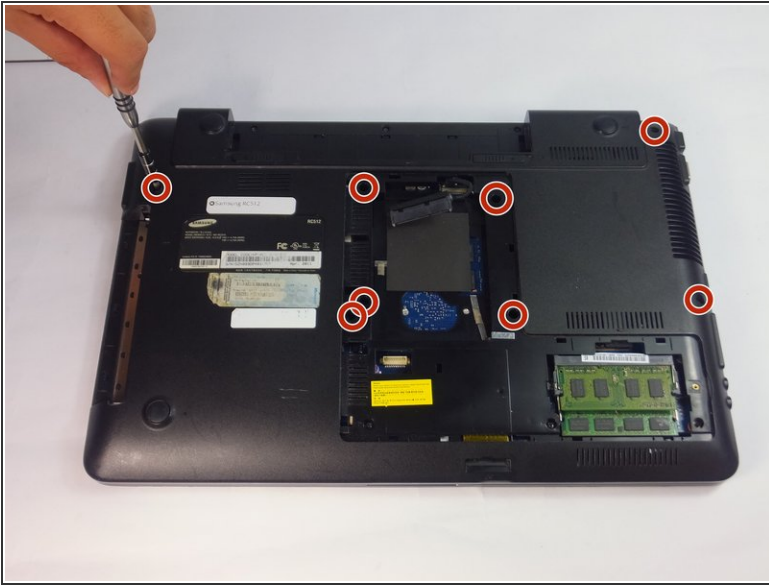
- Remove the 4mm Phillips #0 screw using a Phillips #0 screwdriver.

Step 8



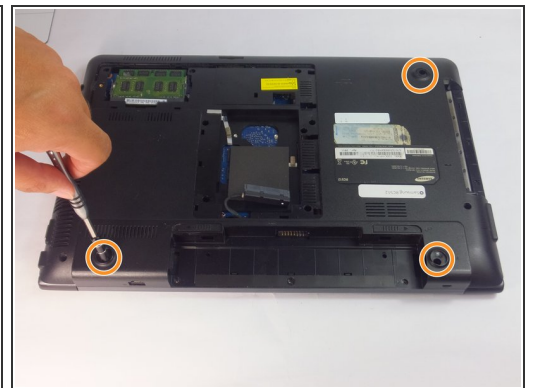
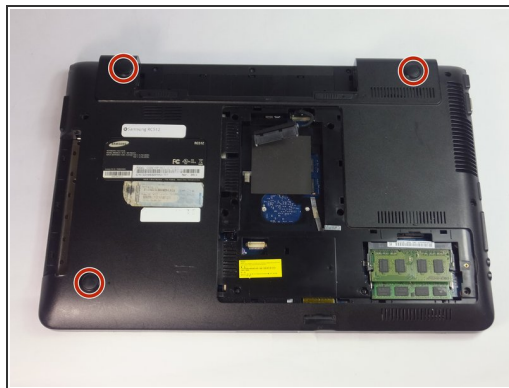
- Use the spudger or fingers to gently pull the optical drive out.
- Slide the optic drive away from the laptop.

Step 9 — Cooling Fan/Heat Sink



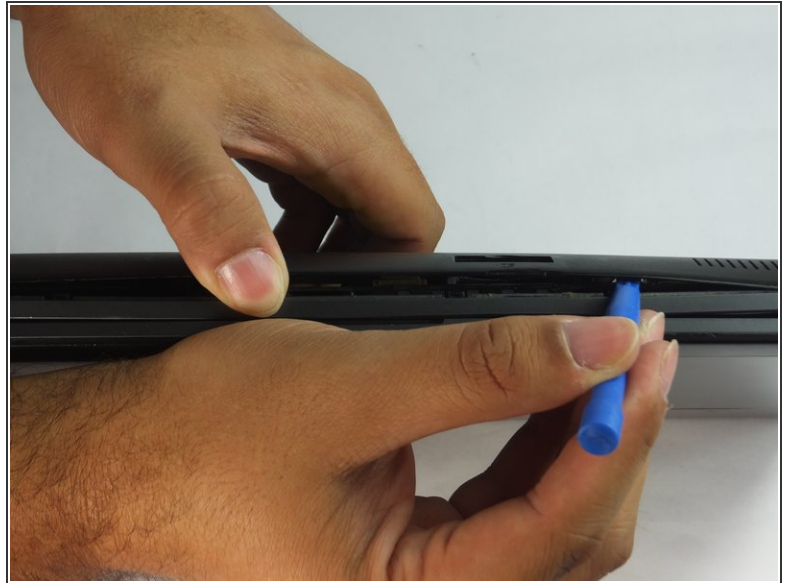
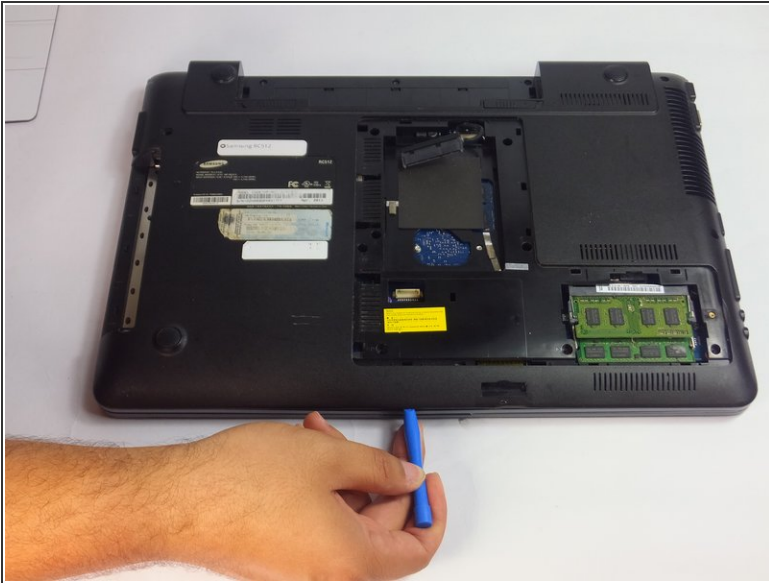
- Remove the eight 5mm Phillips #0 screws using a Phillips #0 driver.
- Also remove the three 5mm Phillips #0 using a Phillips #0 driver.



Step 10



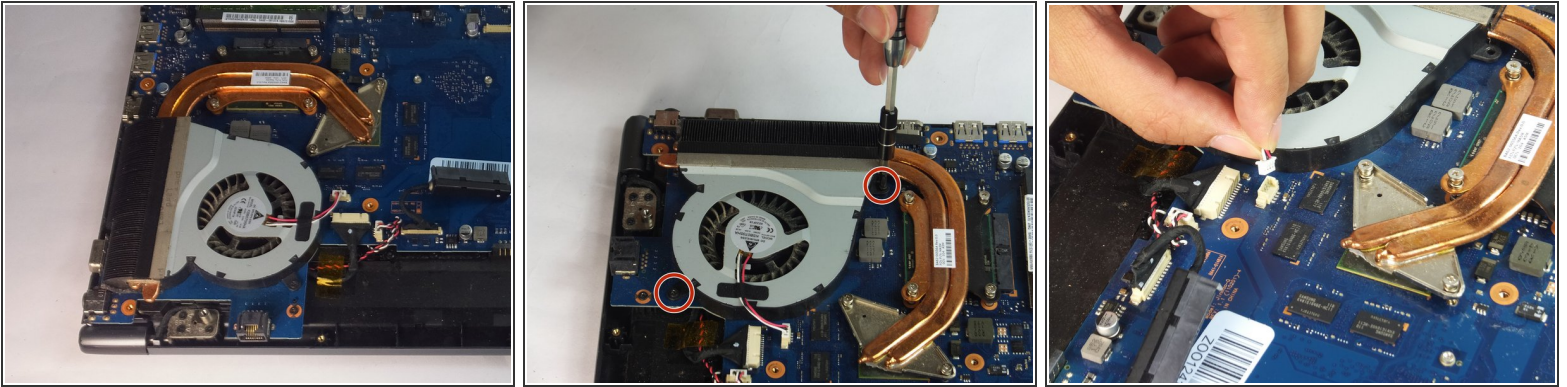
- Remove three bottom dark covers using tweezers.
- Remove three 10mm Phillips #0 screws using Phillips #0 driver.

Step 11



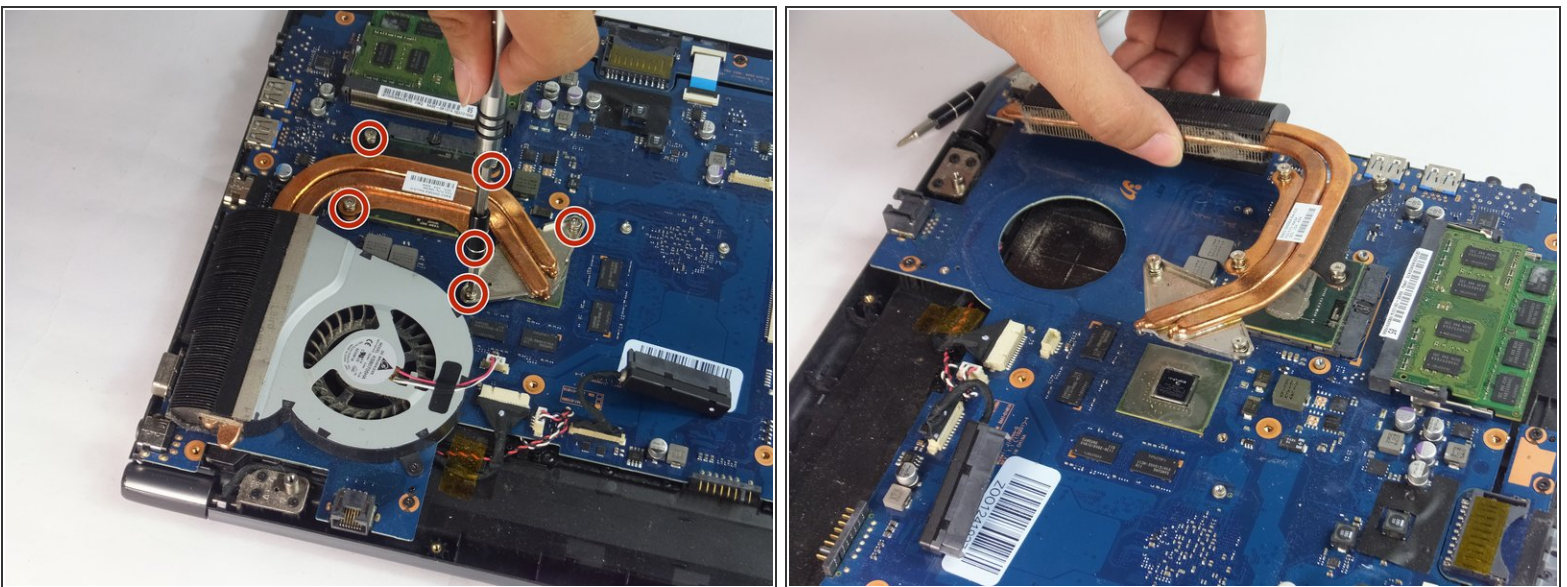
- Insert a plastic opening tool into the back cover and the housing of the body.
 - Use the plastic opening tool to pop open the clamps that hold the casing onto the back cover.
 - Work your way around the all sides to completely take off the back cover.
-  You may use your fingers to help remove the cover.
-  Carefully lift the back cover. Do not use excessive force to lift it. If it feels like it will not pull up, make sure all the screws have been taken out.

Step 12



- Remove two 5mm Phillips #8 screw using a phillips #0 screwdriver.
- Gently pull out the connector from the motherboard.

Step 13



- Remove the six 5mm Phillips #0 screw using a Phillips #0 screwdriver.
- Gently lift the cooling fan and heat sink to take them off.

⚠ Heat sink might be hot right after the laptop is shutdown.

To reassemble your device, follow these instructions in reverse order.

This document was generated on 2019-10-28 05:47:46 AM (MST).

