



Samsung RC512 Optic Drive Replacement

This guide provides a simple walkthrough for replacing optic drive on a Samsung RC512.

Written By: Juri Ando



INTRODUCTION

Optic drive replacement may need to be done when the drive is damaged.



TOOLS:

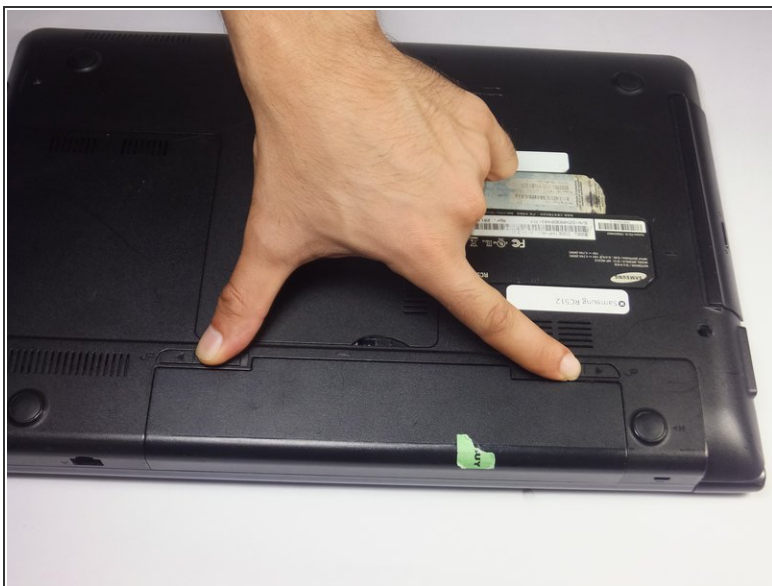
- [Phillips #0 Screwdriver](#) (1)
 - [iFixit Opening Tools](#) (1)
-

Step 1 — Battery



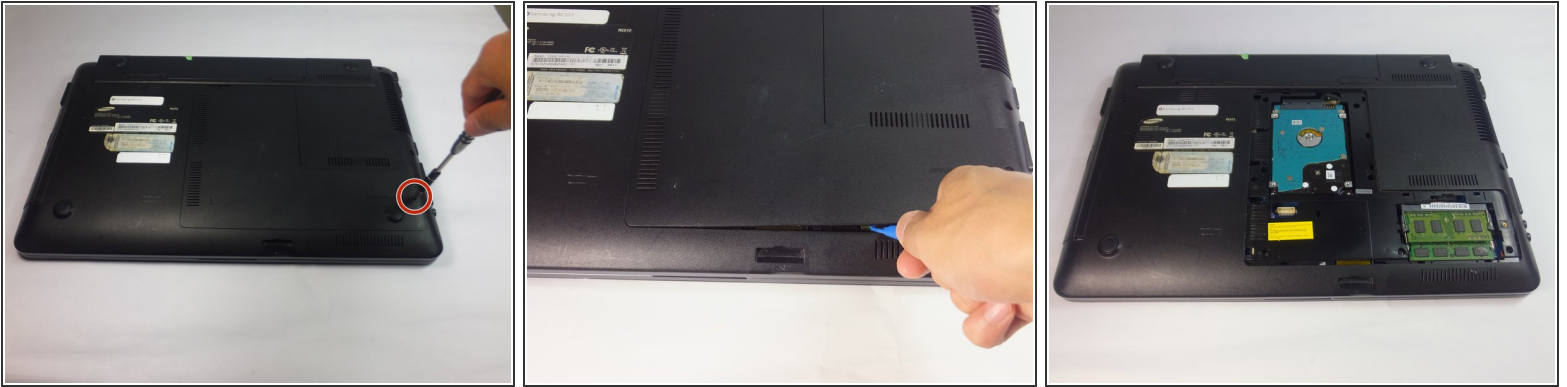
- Place the laptop upside down.

Step 2



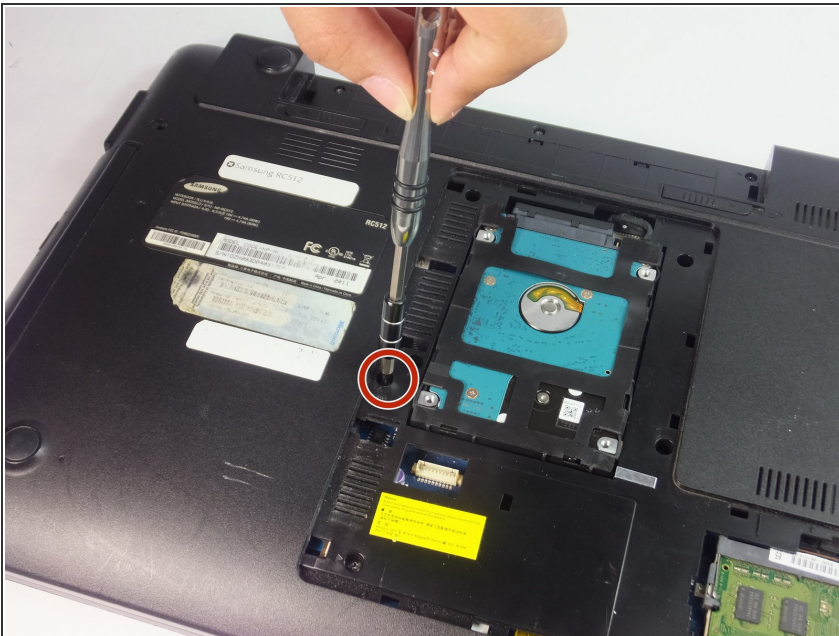
- Locate two notches above the battery.
- Slide both battery locking notches to either side to remove the battery.
- Pull the battery out.

Step 3 — Back Panel



- Using the Phillips #0 screwdriver, unscrew the one 5mm screw.
- Using the blue plastic opening tools, wedge one in between the back panel and the laptop.
- Carefully remove the back panel..

Step 4 — Optic Drive



- Remove the 4mm Phillips #0 screw using a Phillips #0 screwdriver.

Step 5



- Use the spudger or fingers to gently pull the optical drive out.
- Slide the optic drive away from the laptop.

To reassemble your device, follow these instructions in reverse order.