



Samsung RC512 Screen Replacement

This guide provides a simple walkthrough for repairing a damaged LCD screen on a Samsung RC512.

Written By: Juri Ando



INTRODUCTION

Screen replacement may need to be done when the screen is damaged, such as lines on the screen and not showing anything. Refer to the [Troubleshooting page](#) to see more information about this. This guide will display the steps needed to replace a damaged screen on Samsung RC512.



TOOLS:

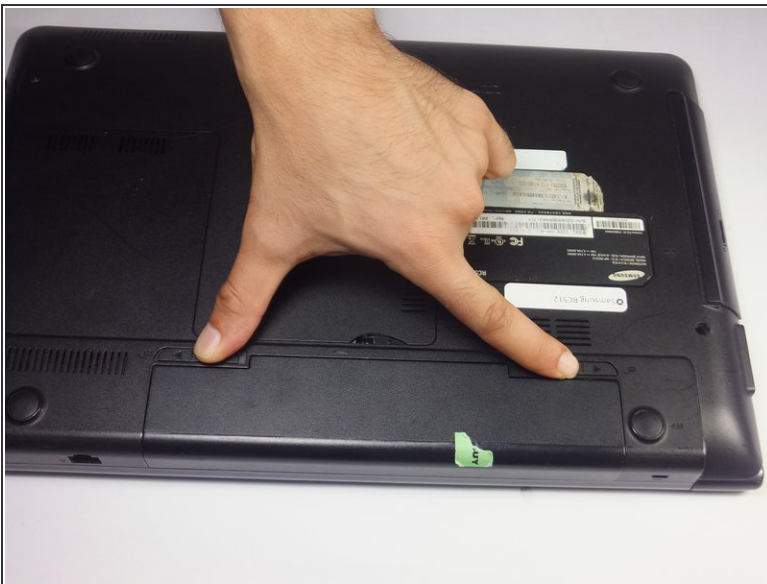
- [Tweezers](#) (1)
 - [Phillips #0 Screwdriver](#) (1)
 - [iFixit Opening Tools](#) (1)
-

Step 1 — Battery



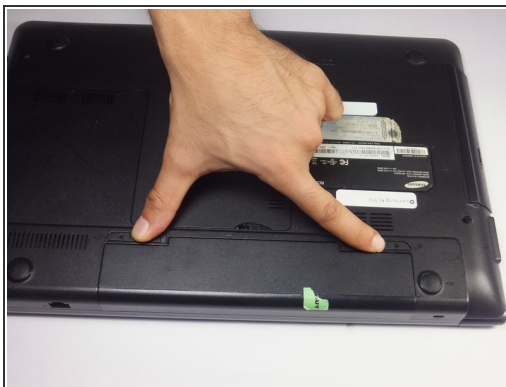
- Place the laptop upside down.


Step 2



- Locate two notches above the battery.
- Slide both battery locking notches to either side to remove the battery.
- Pull the battery out.

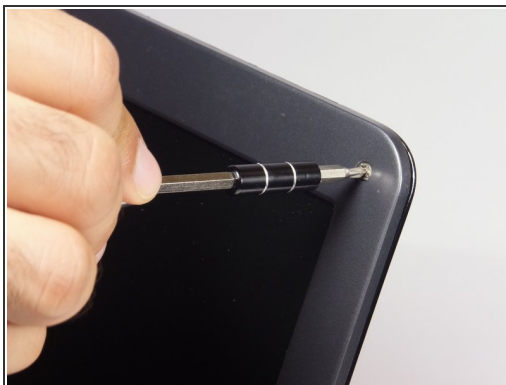
Step 3 — Screen



 The Laptop should be off before removing the battery.

- Slide both battery locking notches to either side to remove the battery.
- Pull the battery out.


Step 4



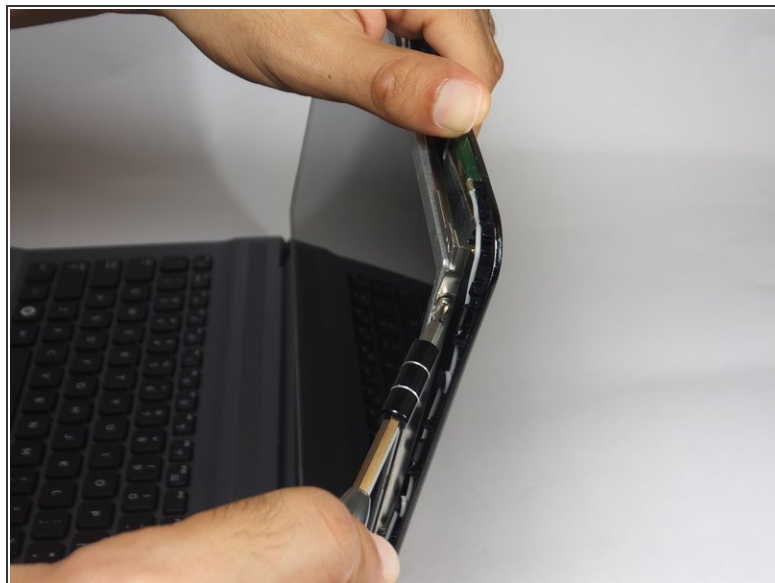
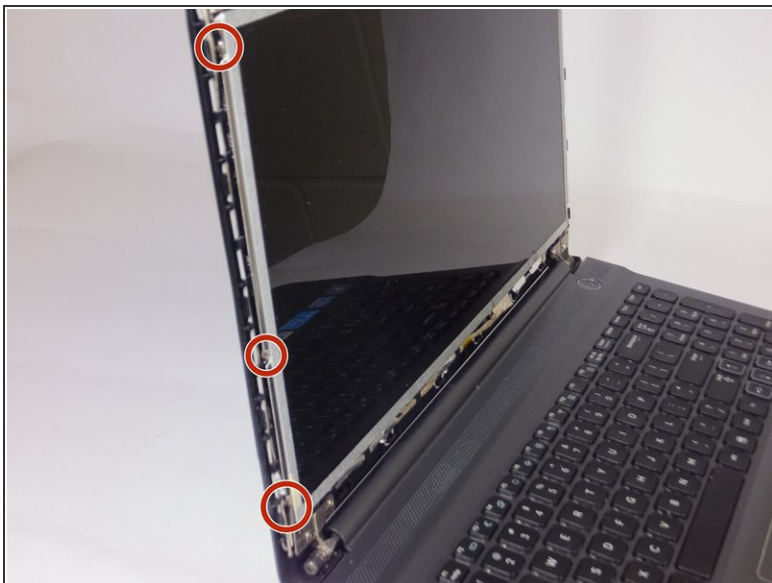
- Remove the gray covers with tweezers to expose the 4mm screws.
- Using a Phillips #0 screwdriver, remove the four 4 mm Phillips #0 screws.

Step 5



- Insert the blue plastic opening tool into the bezel and rear housing of the screen.
 - Use the plastic opening tool to pop open the clips that hold the casing on the screen.
 - Work your way around the sides carefully and continue this to the bottom.
-  You may use your fingers to help remove the cover.

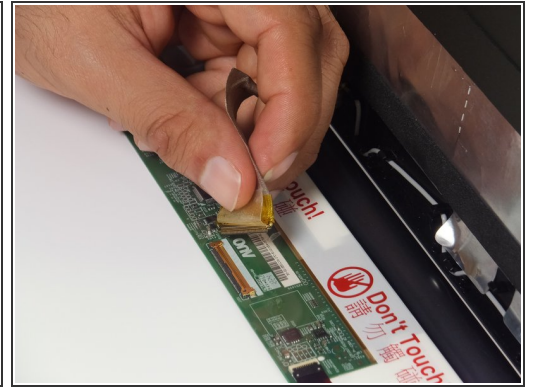
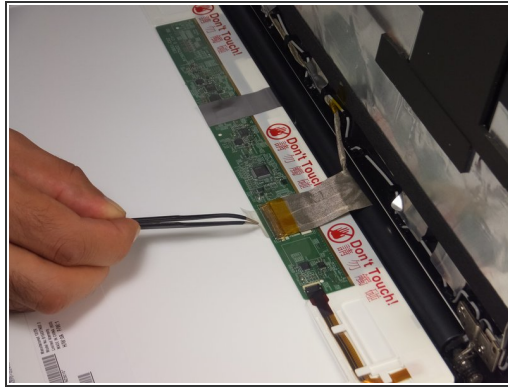
Step 6




- With the Phillips #0 screwdriver remove the six 3 mm screws, which mount the screen onto the base of the laptop.


⚠ As you remove the last two screws, support the screen. As the screws are taken out, the screen will begin to fall forward.

Step 7



- Gently lay the LCD onto the keyboard.

 Do not separate the LCD screen and the back panel from each other. The video connector still connects the two together.

- Remove the tape that secures the video connector to the LCD screen with tweezers.
- Grasp the video connector at its base and pull it away from the LCD screen.
-  The only thing holding the screen will be the clear tape causing it to come out easily.

To reassemble your device, follow these instructions in reverse order.