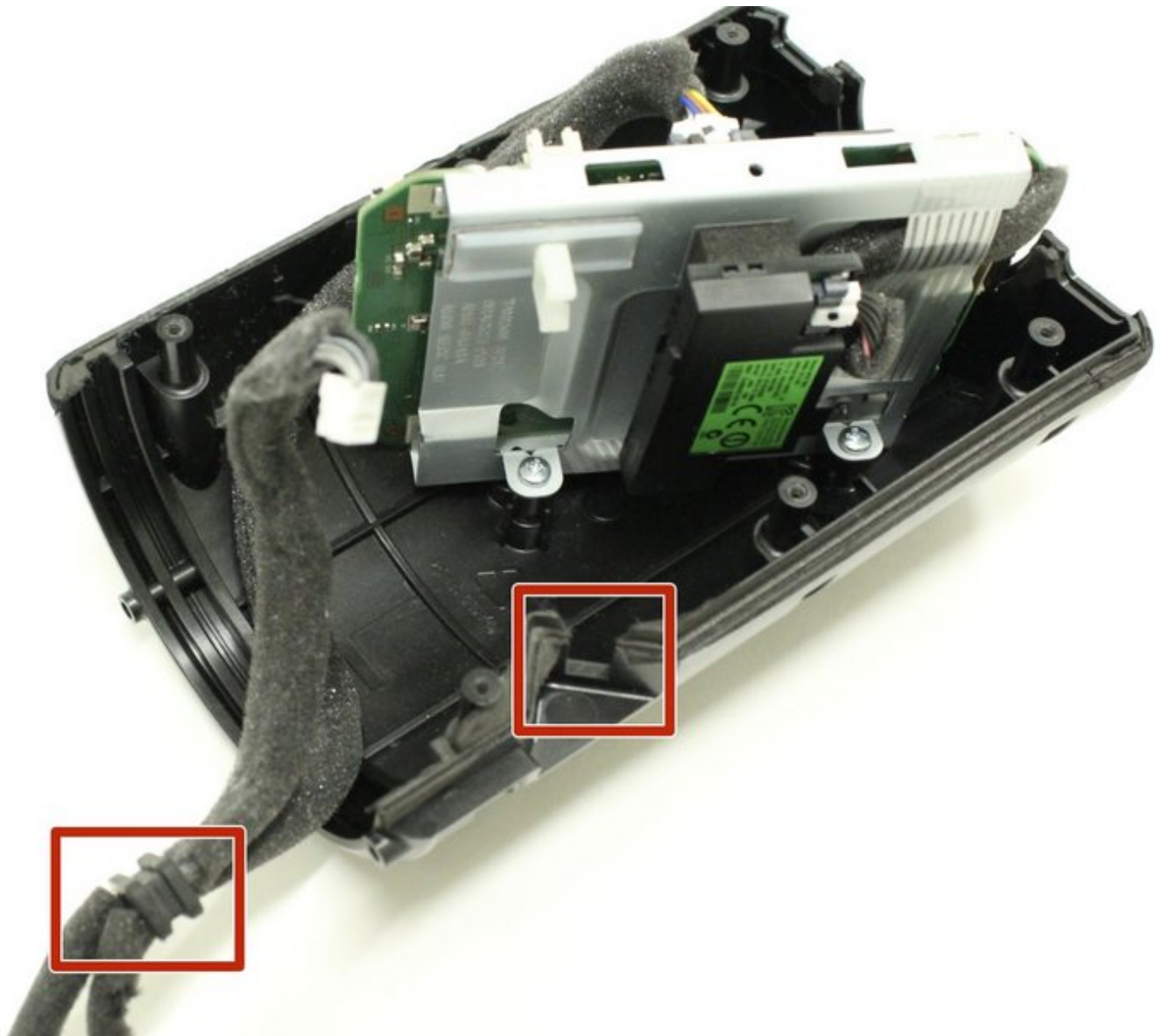




Samsung Radiant 360 R1 Bluetooth Module Replacement

This guide will demonstrate the removal of the Bluetooth module.

Written By: Daniel Mendoza



INTRODUCTION

There could be many reasons the Bluetooth module on the device will not connect, such as water damage or electric shock. This guide will show you step by step how to replace a non-functioning Bluetooth Module. In order to start working on your device, you will need to prepare a clean, dry, and flat work space. It is recommended to have a place to store screws during the process.



TOOLS:

- [iFixit Opening Tools](#) (1)
 - [Phillips #1 Screwdriver](#) (1)
-

Step 1 — Micro USB / Power Port Panel



⚠ Working on your device while it is turned on may result in electric shock. Make sure to shut down and unplug your device before you begin.

- Use the plastic opening tool to lift and remove the rubber grommet plugs.

Step 2



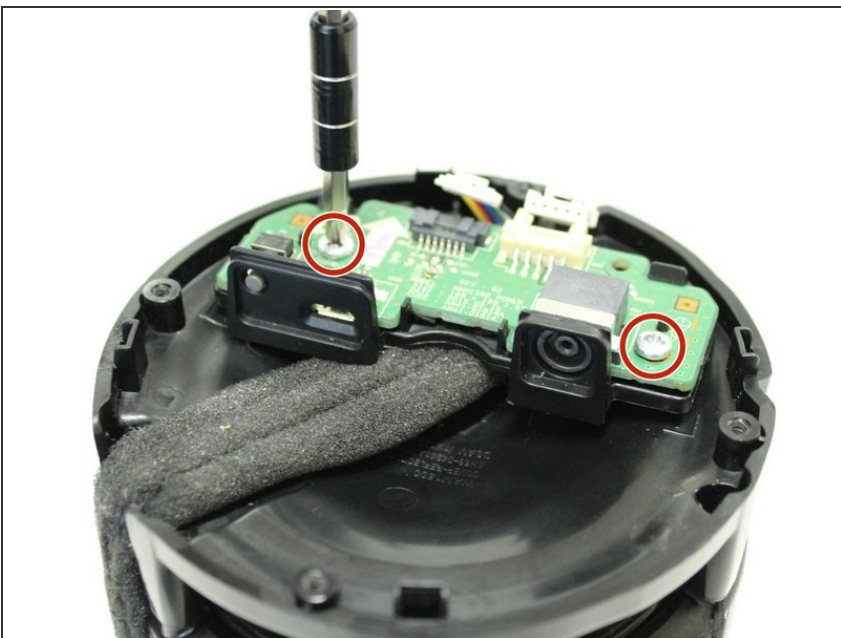
- Using a PH1 Philips screwdriver, remove four (9.5mm x 1.6mm) screws from the base plate.
- Remove base plate by stabilizing speaker and using plastic prying tool to pry the base plate from the speaker.

Step 3



- Place the speaker on the table with the Touch Pad facing down. This will leave you with the Port Panel exposed.
- Remove speaker grill by stabilizing speaker on a table and applying pressure to the bottom of the speaker. Slide the speaker grill up and away from the remaining endcap.

Step 4



- Remove the two exposed (9.5mm x 1.6mm) PH1 Phillips screws on the Port Panel.
- Remove the Port Panel from the speaker body, exposing the ribbon cables.

Step 5



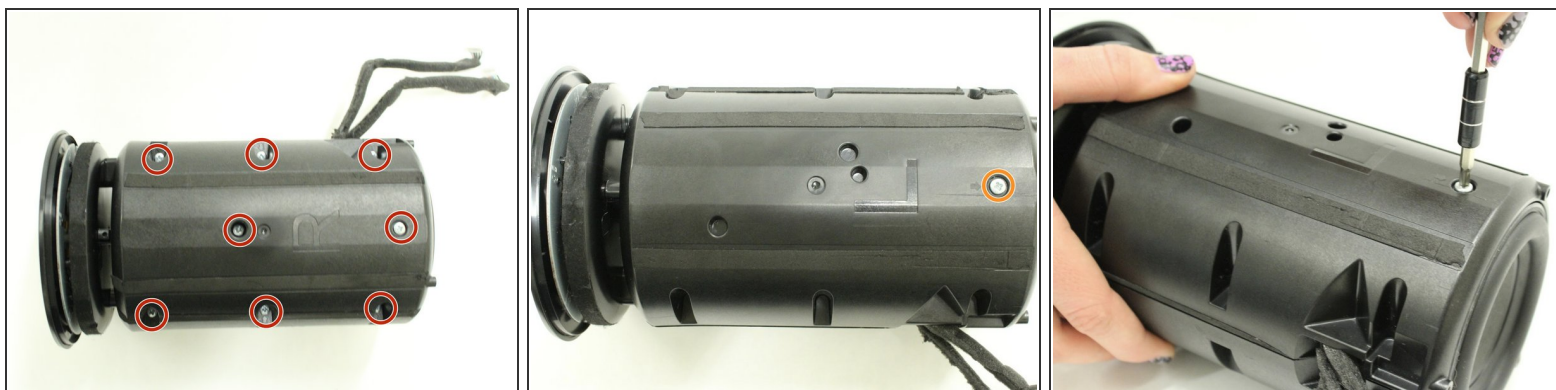
- While stabilizing the Port Panel remove the two ribbon cables one at a time by pressing the locking clip down on the ribbon cable connectors and pulling the connector away from the Port Panel.

Step 6 — 1" Tweeter Speaker



- Remove the four (9.5mm x 1.6mm) PH1 Phillips screws on the port speaker body.
- Remove the Port Panel exposing the subwoofer.

Step 7



- Remove the eight (9.5mm x 1.6mm) PH1 Phillips screws on the right side of the speaker body.
 - Remove the one (9.5mm x 1.6mm) PH1 Phillips screw on the left side of the speaker body.
- i** The body sides are denoted with a "R" and an "L" for right and left sides.

Step 8



- Open up the body to expose the inner panel and motherboard.

Step 9



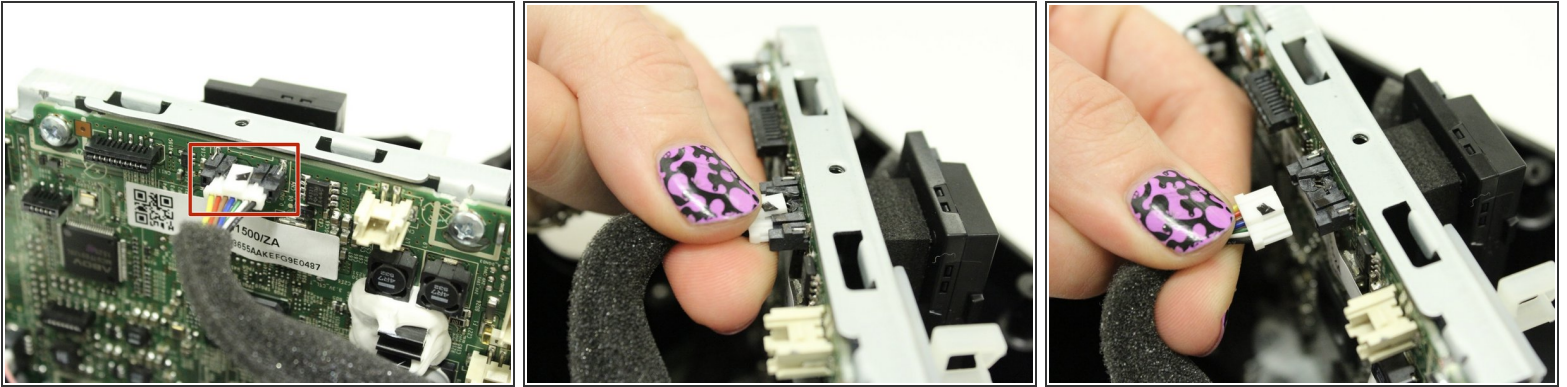
- Remove the ribbon cable from the tweeter which is attached to the main motherboard.
- Slide the tweeter out of the enclosure.

Step 10 — Bluetooth Module



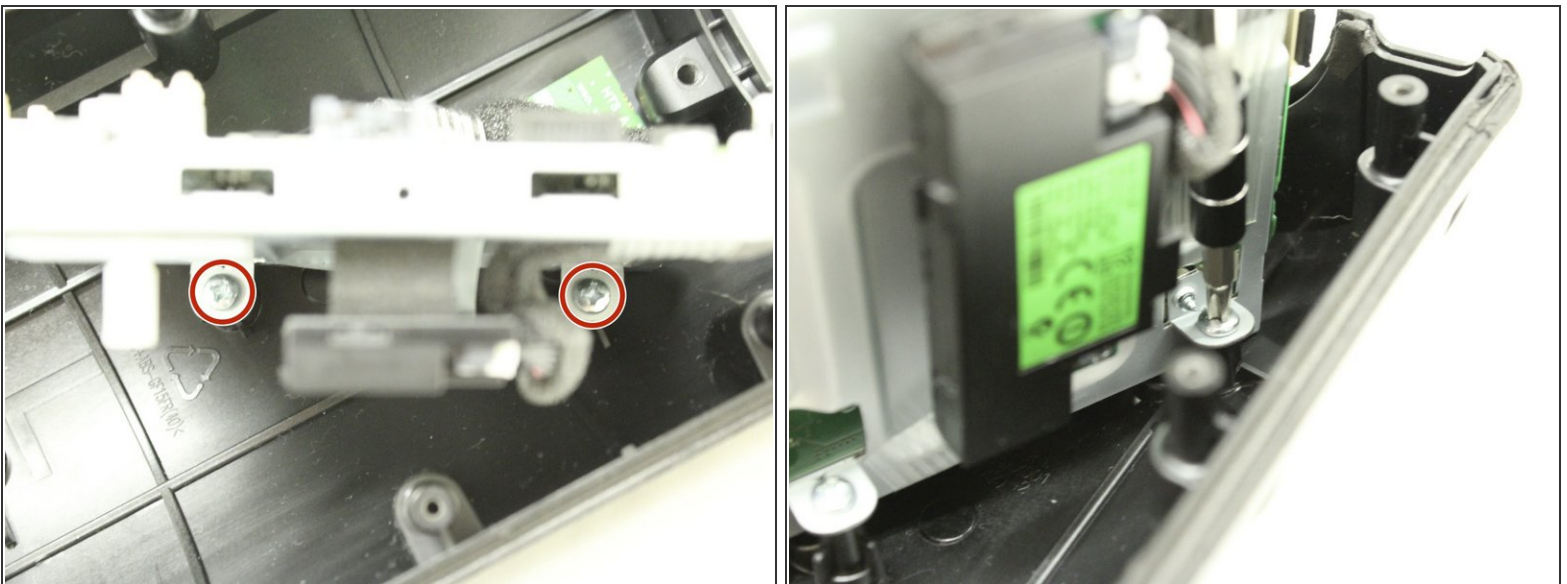
- Slide rubber grommet out of slot on plastic housing.
- ⓘ This may have occurred naturally when separating the two halves.

Step 11



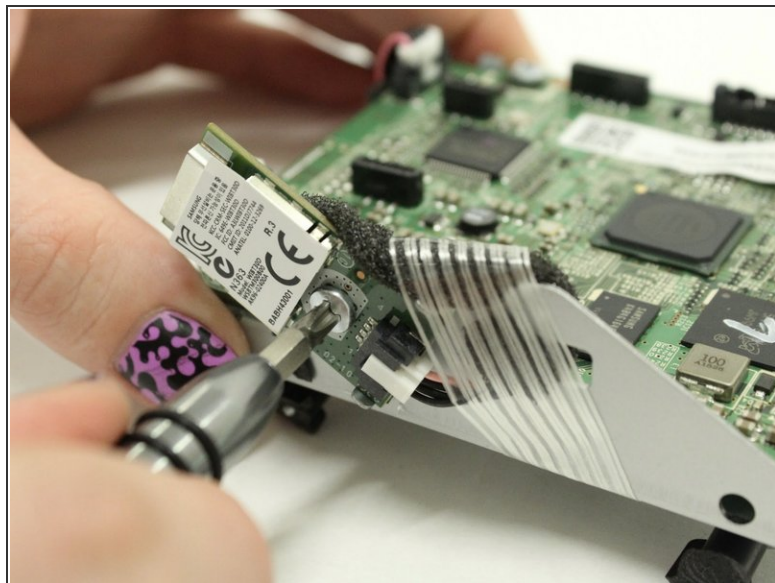
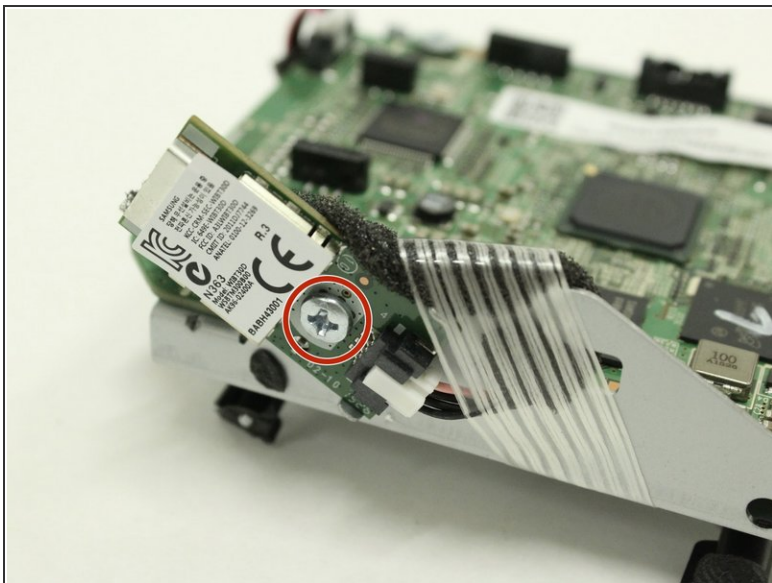
- Disconnect white connector by pushing down on the release tab while gently pulling the connector free from the socket.
- Remove wiring harness and set aside.
- ⓘ The other connectors in the wiring harness should already be free from previous steps.

Step 12



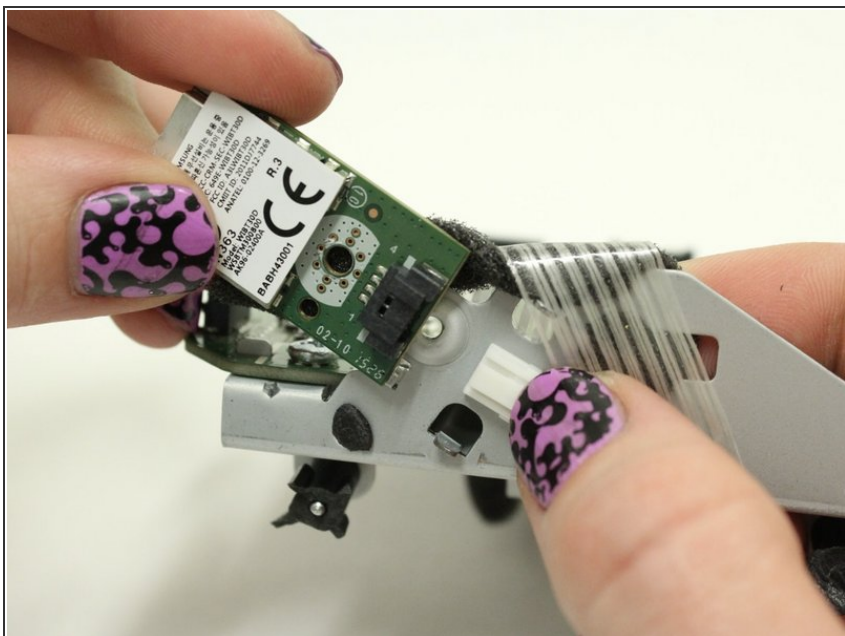
- Locate and remove the two PH2 Phillips screws from the base of the motherboard assembly.
- ⚠ These screws may be extremely tight. Be careful not to snap the plastic when removing the screws.

Step 13



- Flip the motherboard assembly over and locate the Bluetooth module on the side of the metal frame.
- Remove the one PH2 Philips screw.

Step 14



- Press the white tab while gently pulling the Bluetooth module away from the connector and frame.

To reassemble your device, follow these instructions in reverse order.