



# Samsung Radiant 360 R1 Touch Control Panel Replacement

This guide will show how to remove the Touch Control Panel of the Samsung Radiant 360 R1.

Written By: Kim



## INTRODUCTION

The touch panel is where you control the settings on your speaker and if one of the buttons becomes damaged then it may need to be replaced. This guide will demonstrate how to remove the Touch Control Panel in the Samsung Radiant 360 R1.


---

### TOOLS:

- [Phillips #1 Screwdriver](#) (1)
  - [iFixit Opening Tools](#) (1)
-

## Step 1 — Micro USB / Power Port Panel



 Working on your device while it is turned on may result in electric shock. Make sure to shut down and unplug your device before you begin.

- Use the plastic opening tool to lift and remove the rubber grommet plugs.

## Step 2



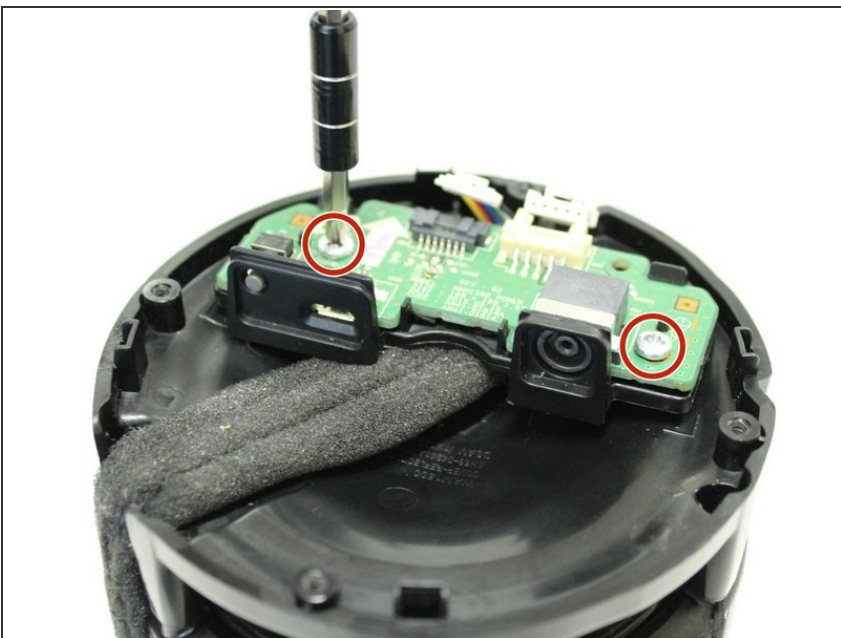
- Using a PH1 Philips screwdriver, remove four (9.5mm x 1.6mm) screws from the base plate.
- Remove base plate by stabilizing speaker and using plastic prying tool to pry the base plate from the speaker.

### Step 3



- Place the speaker on the table with the Touch Pad facing down. This will leave you with the Port Panel exposed.
- Remove speaker grill by stabilizing speaker on a table and applying pressure to the bottom of the speaker. Slide the speaker grill up and away from the remaining endcap.

### Step 4



- Remove the two exposed (9.5mm x 1.6mm) PH1 Phillips screws on the Port Panel.
- Remove the Port Panel from the speaker body, exposing the ribbon cables.



## Step 5



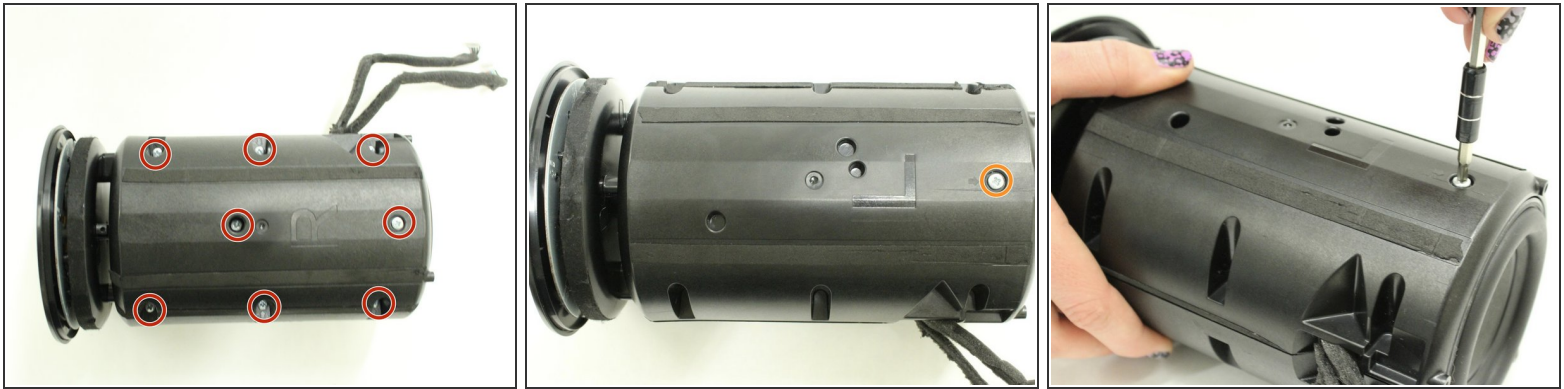
- While stabilizing the Port Panel remove the two ribbon cables one at a time by pressing the locking clip down on the ribbon cable connectors and pulling the connector away from the Port Panel.

## Step 6 — 1" Tweeter Speaker



- Remove the four (9.5mm x 1.6mm) PH1 Phillips screws on the port speaker body.
- Remove the Port Panel exposing the subwoofer.

## Step 7



- Remove the eight (9.5mm x 1.6mm) PH1 Phillips screws on the right side of the speaker body.
- Remove the one (9.5mm x 1.6mm) PH1 Phillips screw on the left side of the speaker body.
- ⓘ The body sides are denoted with a "R" and an "L" for right and left sides.

## Step 8



- Open up the body to expose the inner panel and motherboard.

## Step 9



- Remove the ribbon cable from the tweeter which is attached to the main motherboard.
- Slide the tweeter out of the enclosure.

## Step 10 — Touch Panel



- Separate the control panel from the base.



## Step 11



- Control panel is now removed.

To reassemble your device, follow these instructions in reverse order.