



# Samsung Radiant360 R3 Wireless Setup Button and USB Module Replacement

Replace the USB connector board, which also contains the setup button for Wi-Fi pairing.

Written By: Fadi Alzammar



## INTRODUCTION

In this guide, we will be replacing the USB module of the speaker, which also houses the button used in pairing the speaker for Wi-Fi capabilities. You will need to remove the bottom cover, unplug the connector from the motherboard to it, and remove it from the speaker assembly.



### TOOLS:

- [Spudger](#) (1)
  - [Tweezers](#) (1)
  - [Phillips #1 Screwdriver](#) (1)
-

## Step 1 — Wireless Setup Button and USB Module



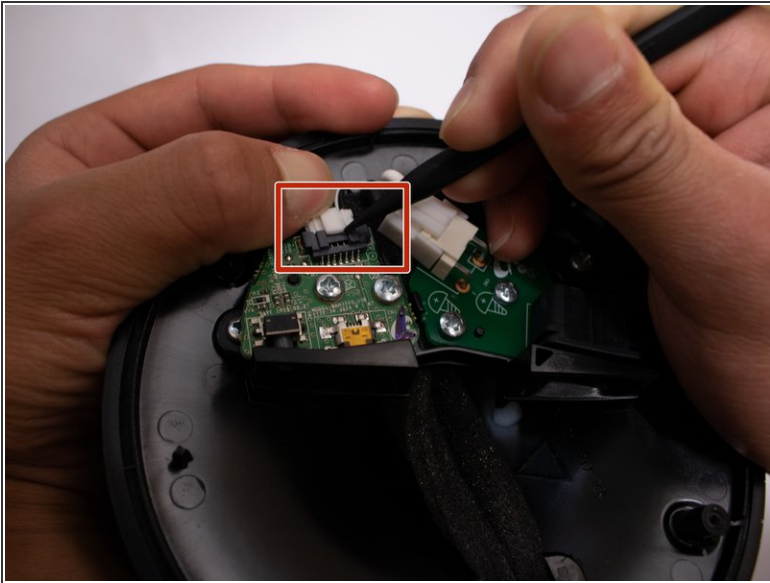
- Flip the device so that the bottom of the device is facing you. Remove these feet with a pair of tweezers.
- Remove the four 10mm long screws with the Phillips #1 screwdriver.

## Step 2



- Remove the bottom shell from the speaker.

### Step 3



- Remove the connector from the board by pressing down on the center tab while nudging the connector away with a spudger.

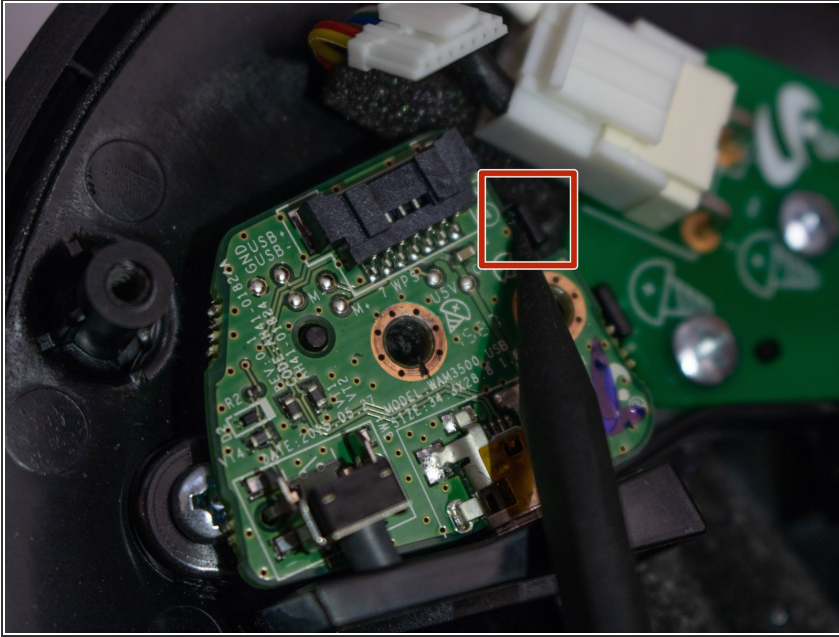
⚠ Be careful not to pull directly on the wires or apply too much pressure, or you risk breaking the connector.

### Step 4



- Remove the two 10mm long screws from the board utilizing the Phillips #1 screwdriver.

## Step 5



- Use a spudger to press the plastic tab away from the board until the board pops up.
- Remove the board with the USB module from the device.

To reassemble your device, follow these instructions in reverse order.