



# Samsung Rogue Keyboard Replacement

Use this guide to replace the keyboard.

Written By: Viktoria Mikoultchik



---

## INTRODUCTION

This guide will provide a step-by-step procedure for replacing the keyboard in your Samsung Rogue.

---



### TOOLS:

- [Phillips #00 Screwdriver](#) (1)
  - [iFixit Opening Tools](#) (1)
-

## Step 1 — Battery



**i** Before disassembling your Samsung Rogue, make sure it is powered off.

- With your thumbs, push down on the back cover of your phone and slide it away from the camera.

## Step 2



- You can now remove the battery by prying it up with your finger.



## Step 3 — Motherboard



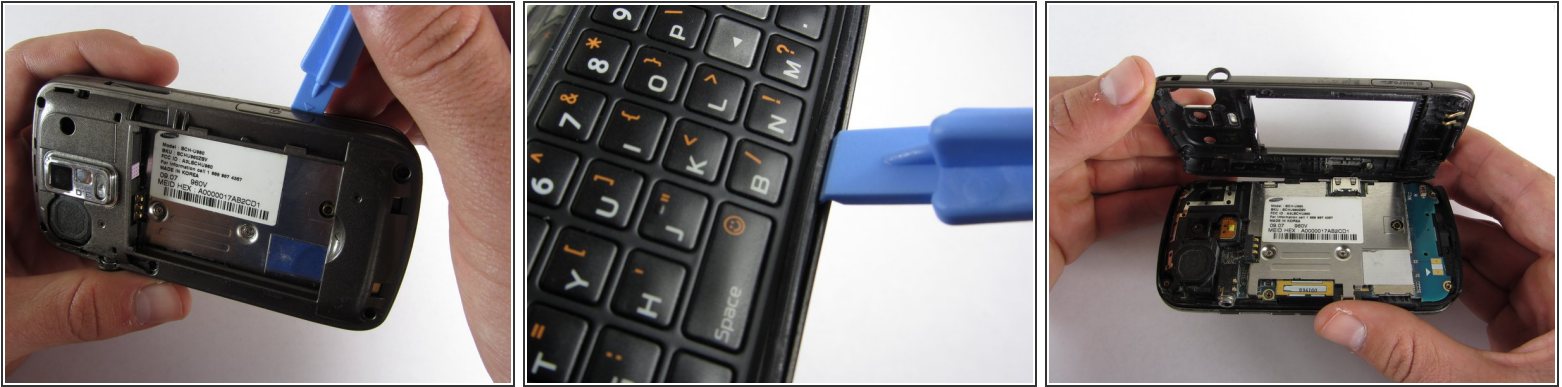
- Use a plastic opening tool to carefully pry the back cover surrounding the camera up from the phone.

## Step 4



- Remove the five 3.4mm Philips screws securing the backing of the phone.

## Step 5



- Use a plastic opening tool to carefully pry off the back cover.
- ⓘ Make sure you are prying along the edge and not between the two halves of the phone that slide away from each other.
- ⚠ Be careful to not drop the volume changing piece, for it can easily slip out.

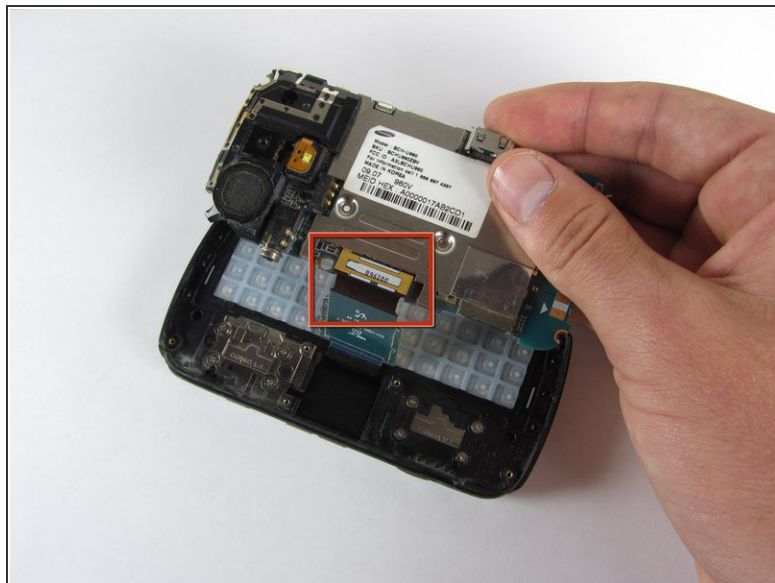
## Step 6



- Remove the two 3.45 mm Philips screws below the white sticker.



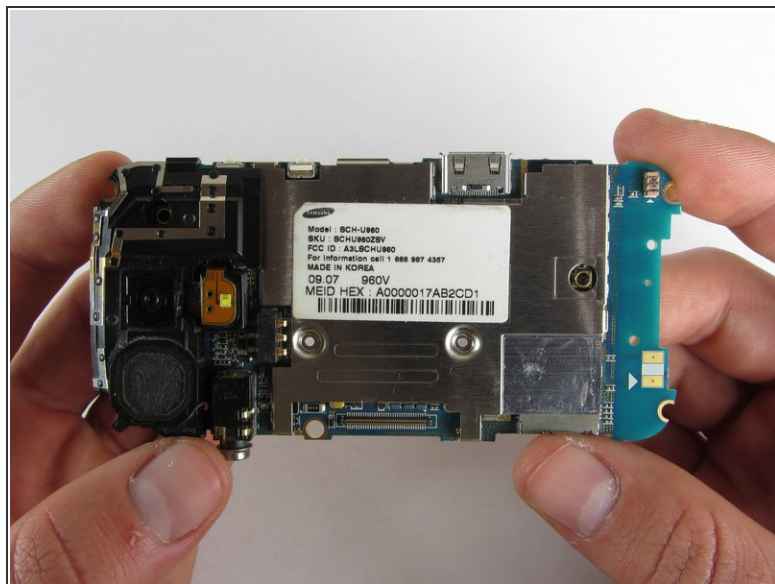
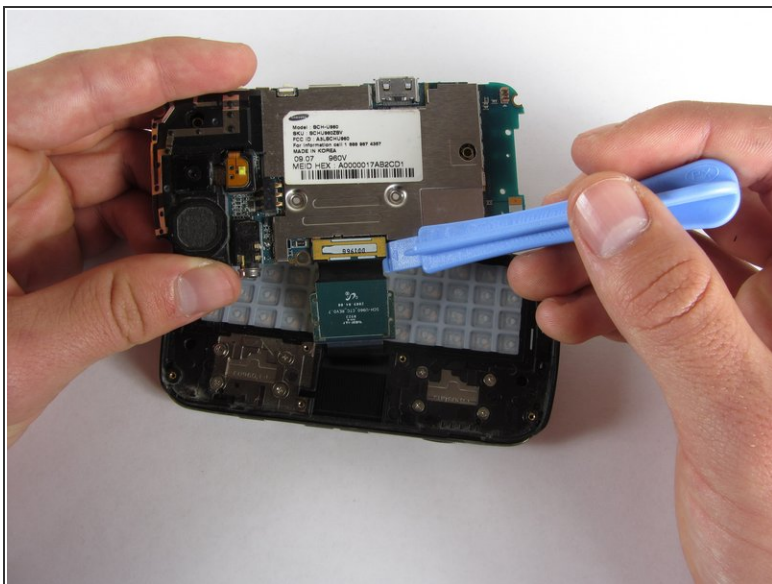
## Step 7



- Carefully lift the motherboard up from the bottom edge.

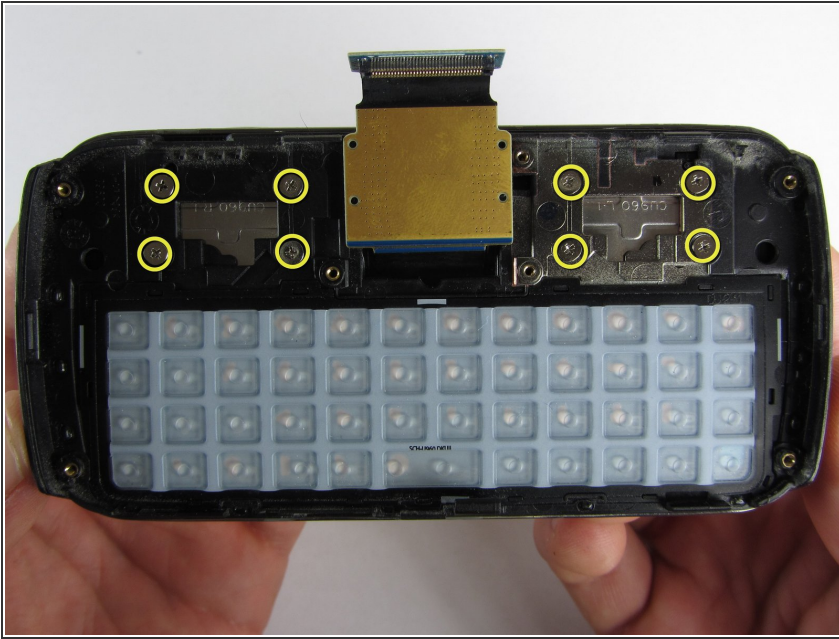
⚠ The film of wires is still attached to the motherboard, so do not completely remove the motherboard just yet or you may damage it.

## Step 8



- Use a plastic opening tool to disconnect the film from the motherboard.

## Step 9 — Keyboard



- Remove the eight 1.7mm Philips screws above the keyboard.

## Step 10



- Carefully remove keyboard holder from the slider mechanisms underneath.



## Step 11



- Turn keyboard holder over and allow the keyboard to simply fall out into your hand.

To reassemble your device, follow these instructions in reverse order.