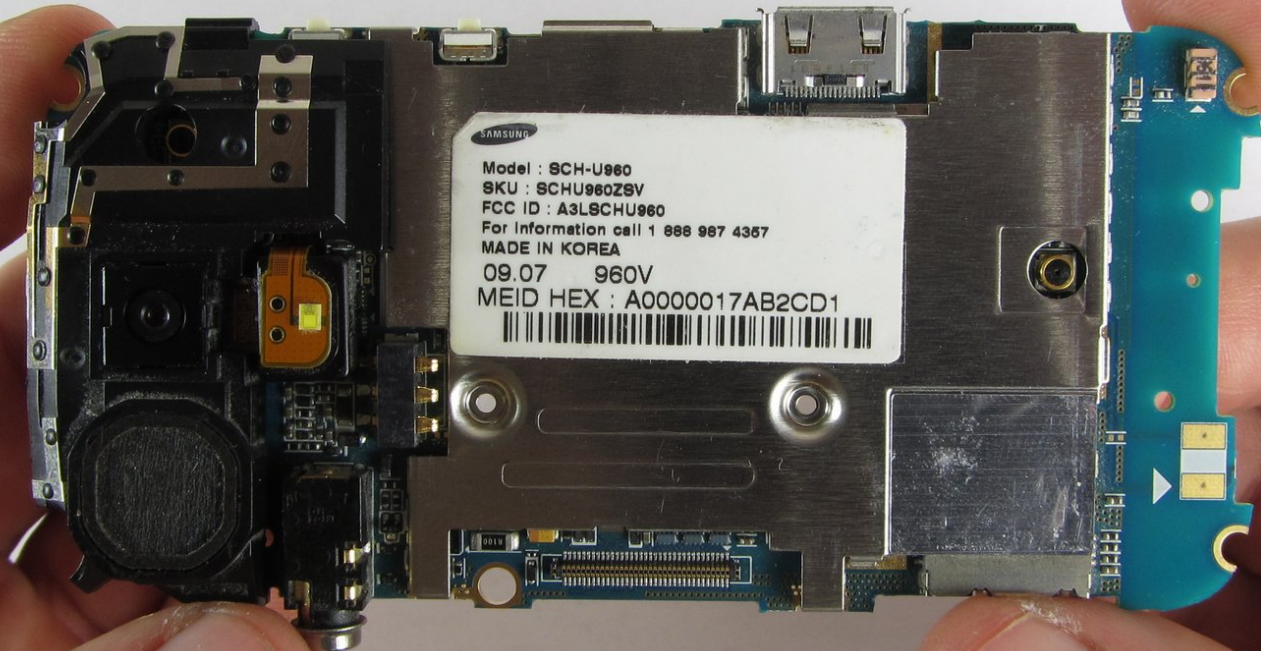




# Samsung Rogue Motherboard Replacement

This is a prerequisite guide for most of our other guides.

Written By: Viktoria Mikoultchik



---

## INTRODUCTION

This guide will provide a step-by-step procedure for getting to the main motherboard in your Samsung Rogue.

---



### TOOLS:

- [Phillips #00 Screwdriver](#) (1)
  - [iFixit Opening Tools](#) (1)
-

## Step 1 — Motherboard



- Use a plastic opening tool to carefully pry the back cover surrounding the camera up from the phone.

## Step 2



- Remove the five 3.4mm Philips screws securing the backing of the phone.



## Step 3



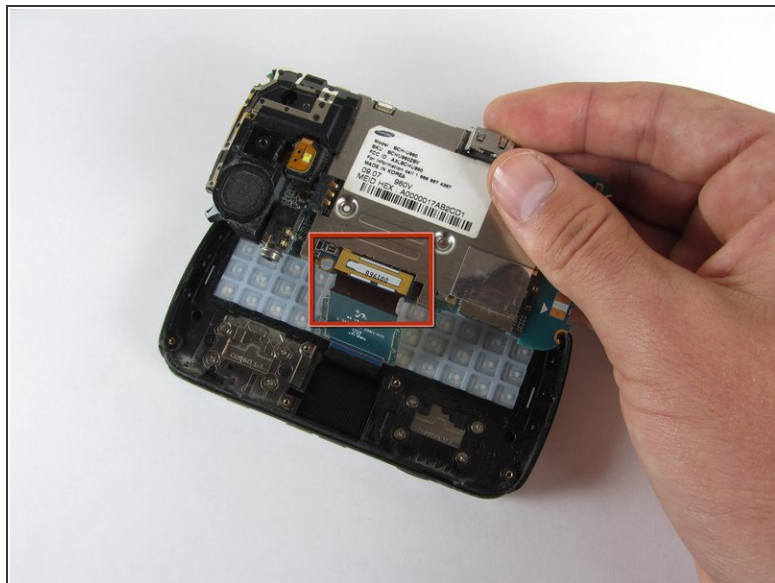
- Use a plastic opening tool to carefully pry off the back cover.
- ⓘ Make sure you are prying along the edge and not between the two halves of the phone that slide away from each other.
- ⚠ Be careful to not drop the volume changing piece, for it can easily slip out.

## Step 4



- Remove the two 3.45 mm Philips screws below the white sticker.

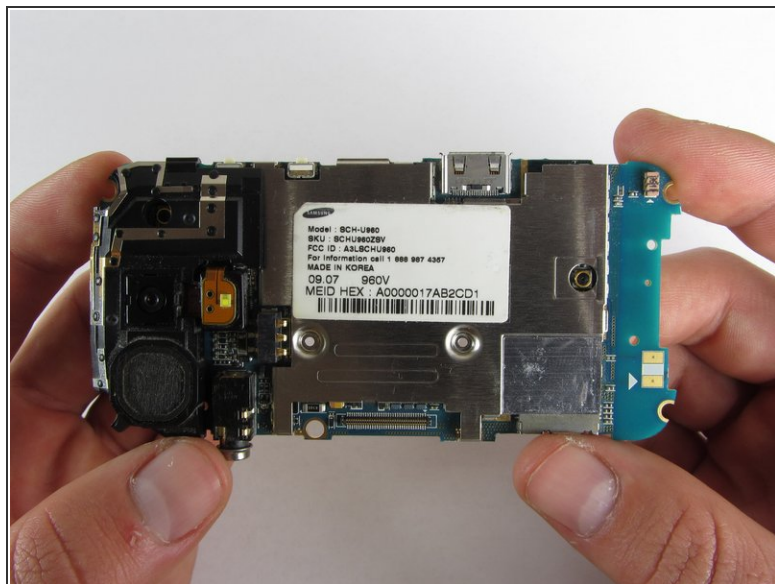
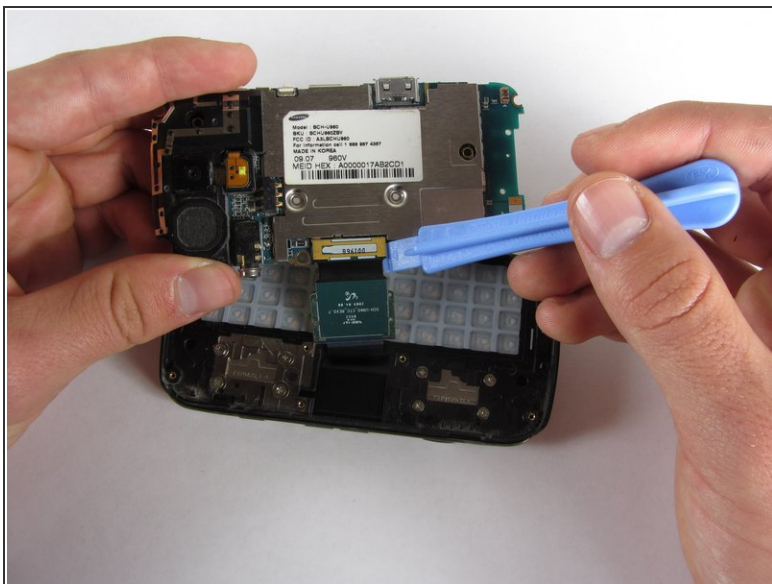
## Step 5



- Carefully lift the motherboard up from the bottom edge.

⚠ The film of wires is still attached to the motherboard, so do not completely remove the motherboard just yet or you may damage it.

## Step 6



- Use a plastic opening tool to disconnect the film from the motherboard.

To reassemble your device, follow these instructions in reverse order.