



Samsung Rogue OLED Screen Replacement

Use this guide to replace the screen on a Samsung Rogue.

Written By: Viktoria Mikoultchik



INTRODUCTION

This guide will provide a step-by-step procedure for replacing the OLED screen in your Samsung Rogue. This is one of the more difficult repair guides because it requires a lot of disassembling.

TOOLS:

- [Phillips #00 Screwdriver](#) (1)
 - [Tweezers](#) (1)
 - [iFixit Opening Tools](#) (1)
-

Step 1 — Battery



i Before disassembling your Samsung Rogue, make sure it is powered off.

- With your thumbs, push down on the back cover of your phone and slide it away from the camera.

Step 2



- You can now remove the battery by prying it up with your finger.

Step 3 — Motherboard



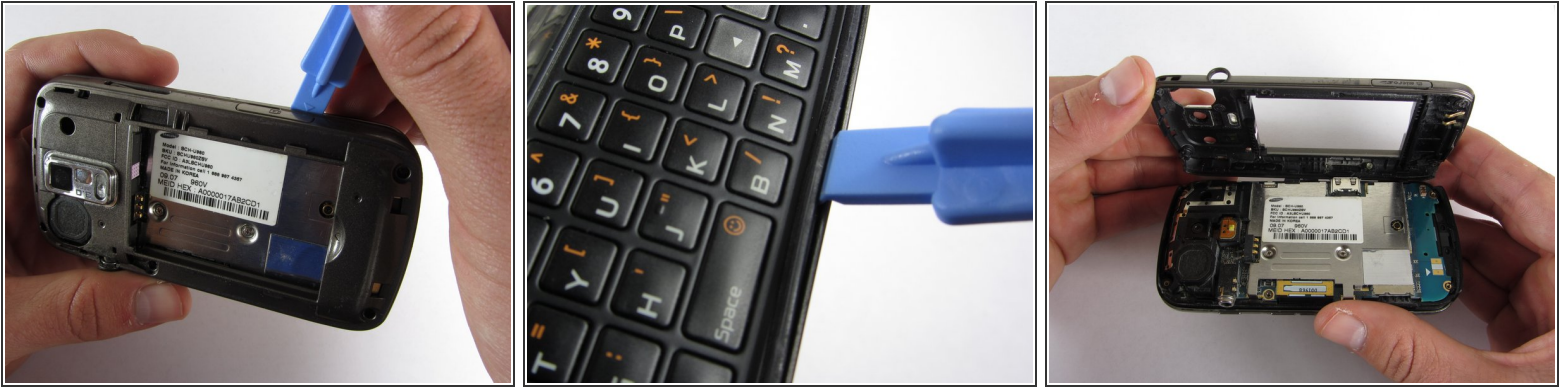
- Use a plastic opening tool to carefully pry the back cover surrounding the camera up from the phone.

Step 4



- Remove the five 3.4mm Philips screws securing the backing of the phone.

Step 5



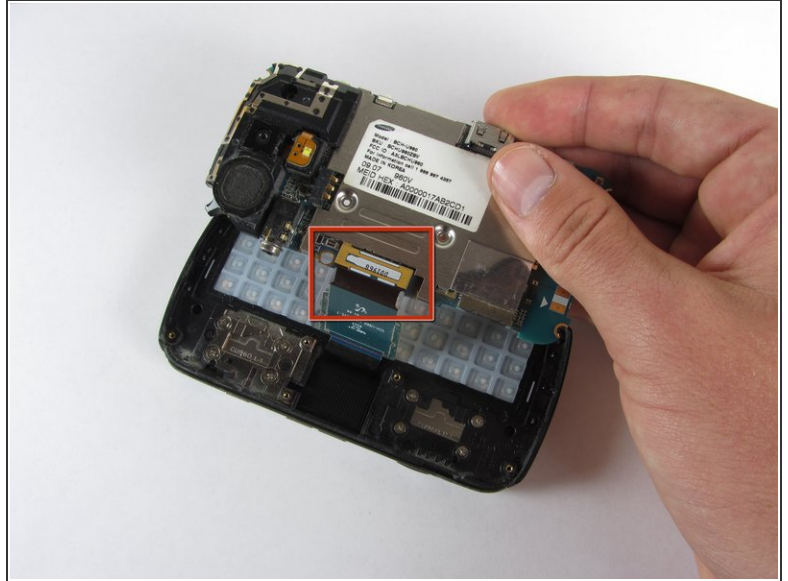
- Use a plastic opening tool to carefully pry off the back cover.
- ⓘ Make sure you are prying along the edge and not between the two halves of the phone that slide away from each other.
- ⚠ Be careful to not drop the volume changing piece, for it can easily slip out.

Step 6



- Remove the two 3.45 mm Philips screws below the white sticker.

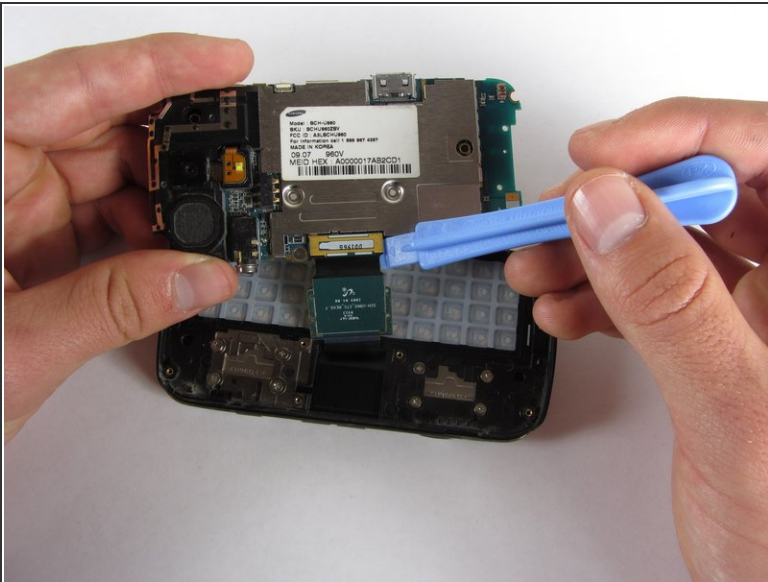
Step 7



- Carefully lift the motherboard up from the bottom edge.

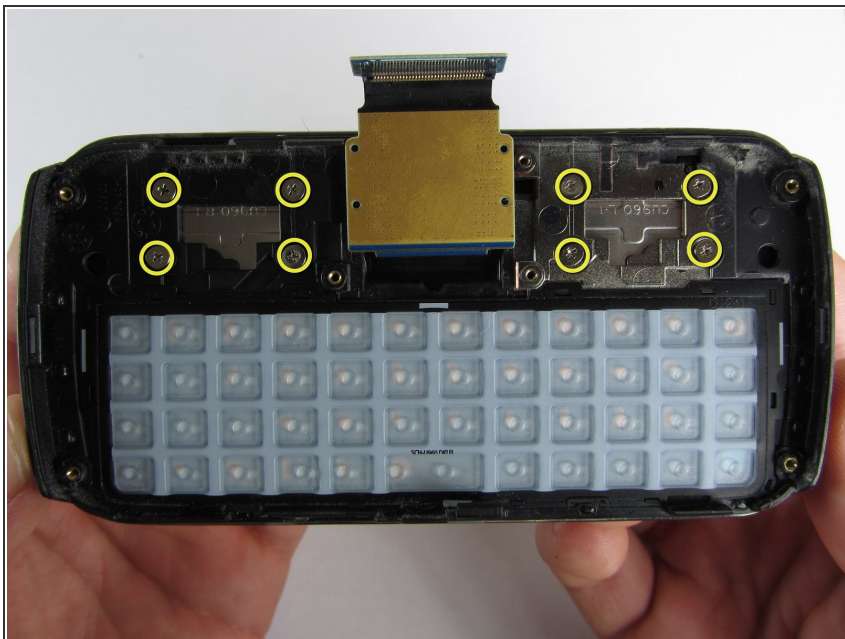
⚠ The film of wires is still attached to the motherboard, so do not completely remove the motherboard just yet or you may damage it.

Step 8



- Use a plastic opening tool to disconnect the film from the motherboard.

Step 9 — OLED Screen



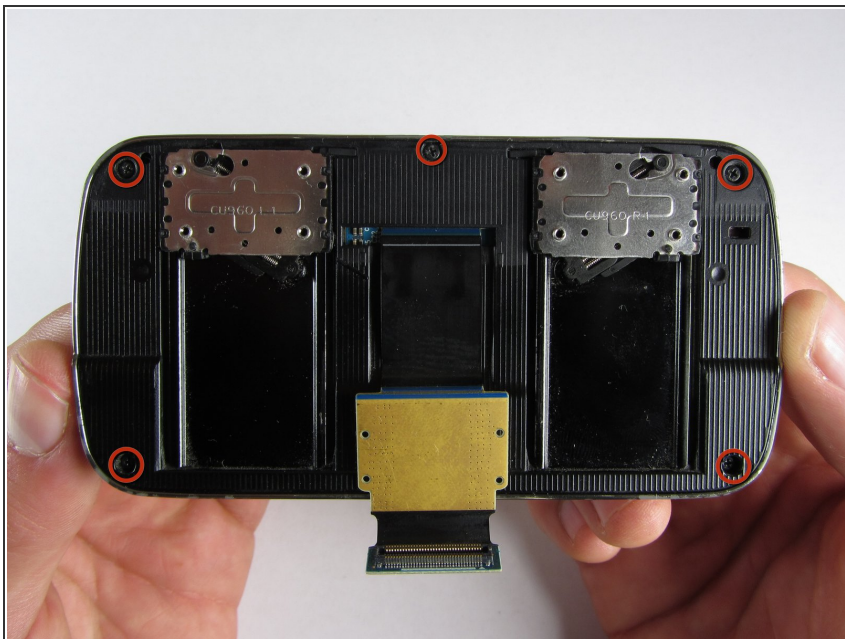
- Remove the eight 1.7mm Philips screws above the keyboard.

Step 10



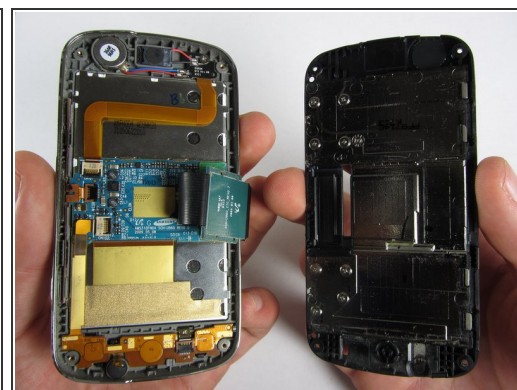
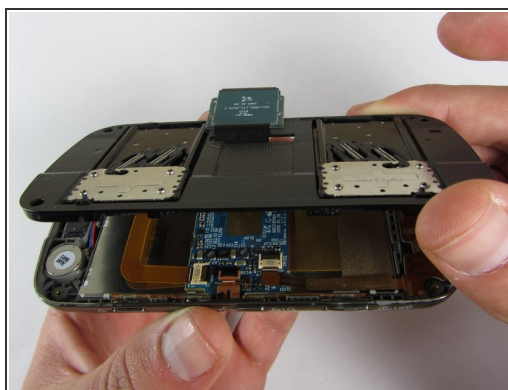
- Carefully remove the keyboard frame from the sliding mechanisms underneath.

Step 11



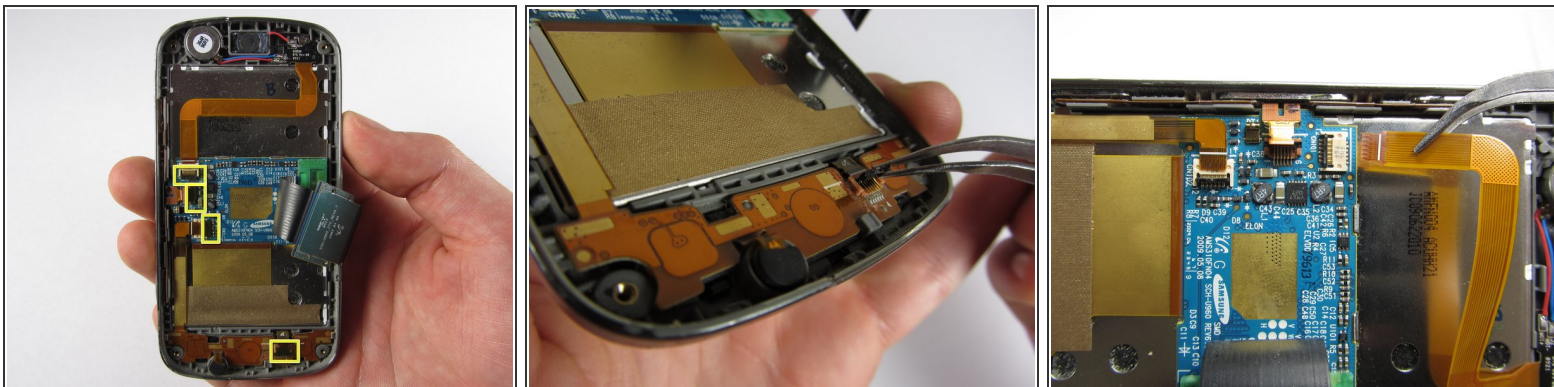
- Remove the five 3.0mm Philips screws around the outside of the sliding mechanisms.

Step 12



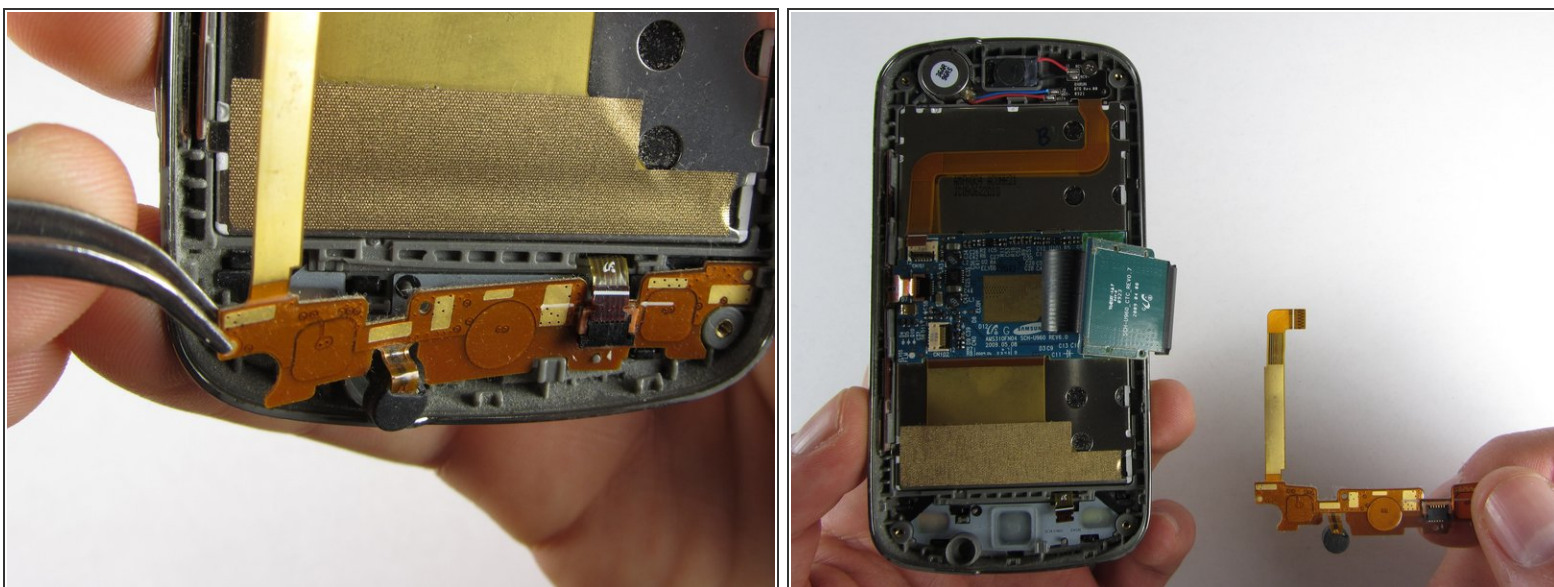
- Use a plastic opening tool to pry off the upper slide plate.
- ☑ Be careful of the film of wires when taking off the upper slide plate.

Step 13



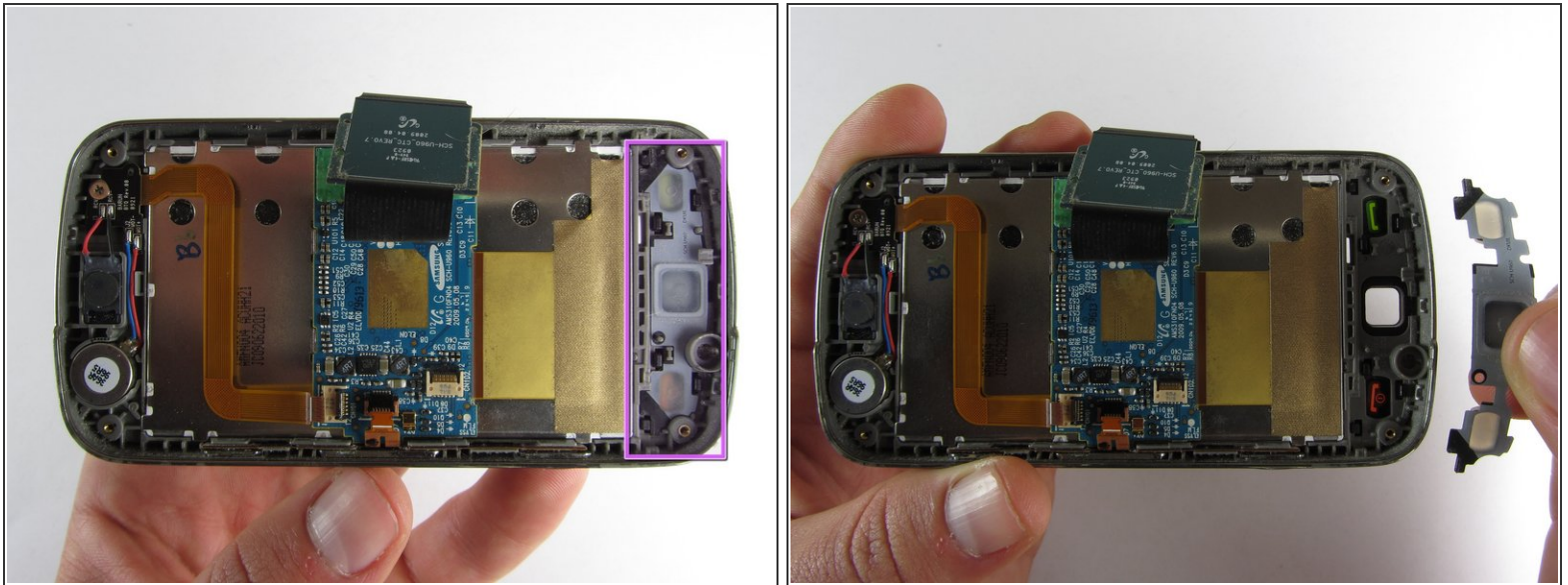
- Use tweezers to open the four black gates by putting them in the "up" position.
- With the same tweezers, carefully pull out the orange strips from the four specified gates.

Step 14



- Using tweezers, gently remove the bottom orange strip from the device

Step 15



- In this procedure, the rubber function key pad can easily fall out, so it would be best to take it out and set it safely aside.

Step 16



- Starting at the top, use a plastic opening tool to pry open the protective screen on the front of the phone.
- One of the strips you pulled out of a gate from a previous step is attached to the screen at the bottom. Be careful not to damage it when you are taking off the screen.
- ⓘ The protective screen is glued underneath the edges, so it will be a little more difficult to get off.
- ⚠ Keep your hand underneath the OLED screen at all times because it easily falls out once the protective screen detaches.

To reassemble your device, follow these instructions in reverse order.