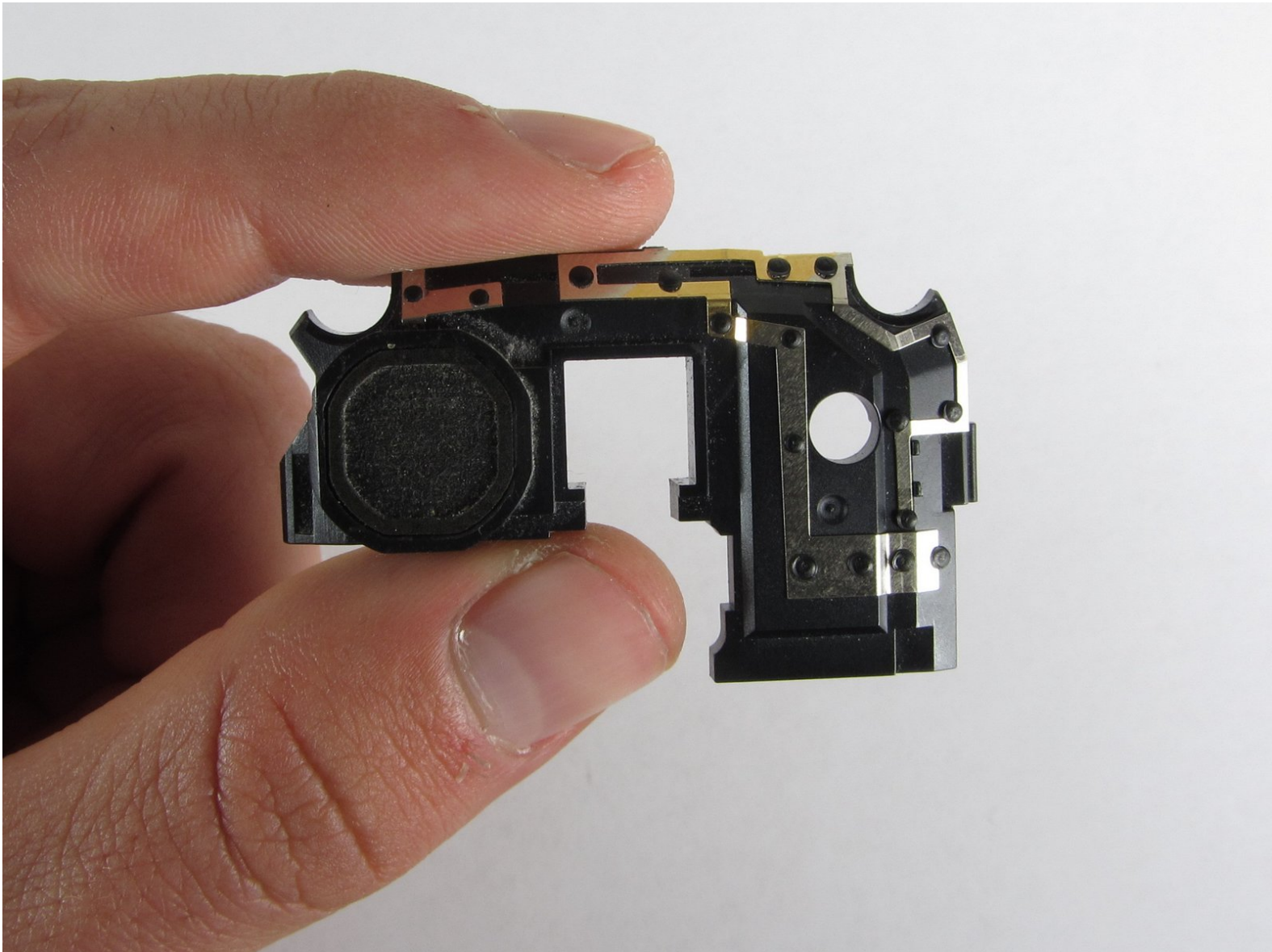




Samsung Rogue Speaker/Antenna Replacement

Replace a broken speaker or a antenna that isn't receiving phone reception.

Written By: Viktoria Mikoultchik



INTRODUCTION

This guide will provide a step-by-step procedure for replacing the antenna and speaker in your Samsung Rogue.



TOOLS:

- [Phillips #00 Screwdriver](#) (1)
 - [iFixit Opening Tools](#) (1)
-

Step 1 — Battery



- i** Before disassembling your Samsung Rogue, make sure it is powered off.
- With your thumbs, push down on the back cover of your phone and slide it away from the camera.

Step 2



- You can now remove the battery by prying it up with your finger.

Step 3 — Motherboard



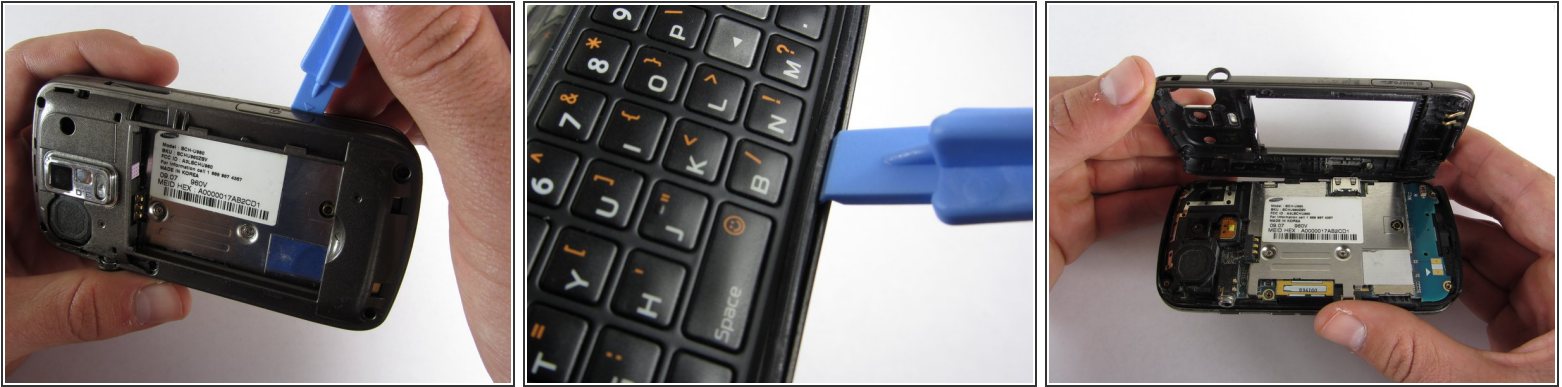
- Use a plastic opening tool to carefully pry the back cover surrounding the camera up from the phone.

Step 4



- Remove the five 3.4mm Philips screws securing the backing of the phone.

Step 5



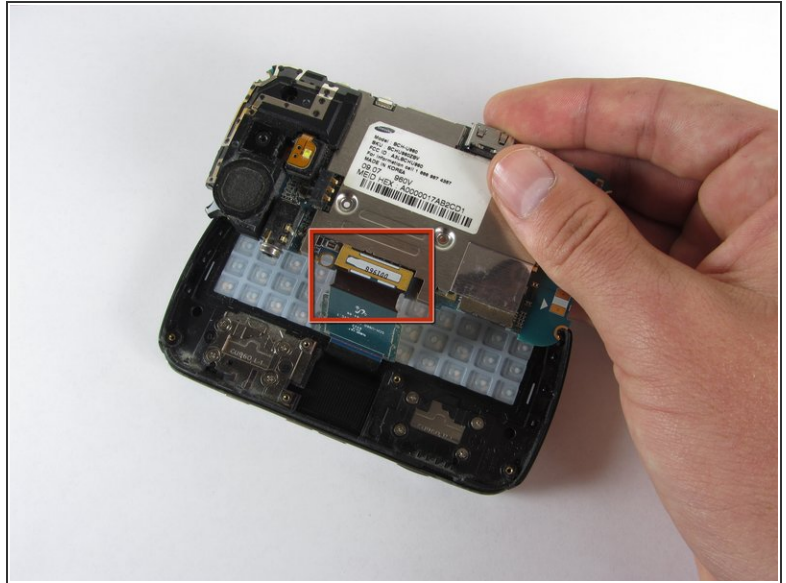
- Use a plastic opening tool to carefully pry off the back cover.
- ⓘ Make sure you are prying along the edge and not between the two halves of the phone that slide away from each other.
- ⚠ Be careful to not drop the volume changing piece, for it can easily slip out.

Step 6



- Remove the two 3.45 mm Philips screws below the white sticker.

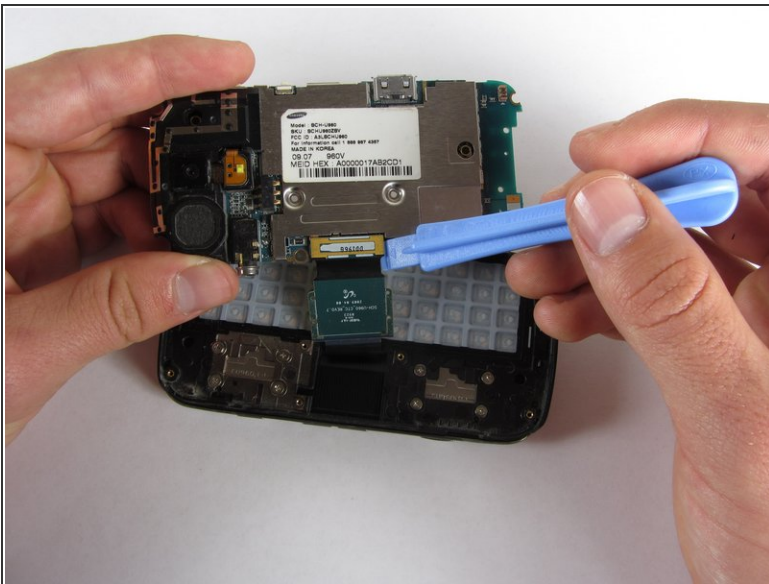
Step 7



- Carefully lift the motherboard up from the bottom edge.

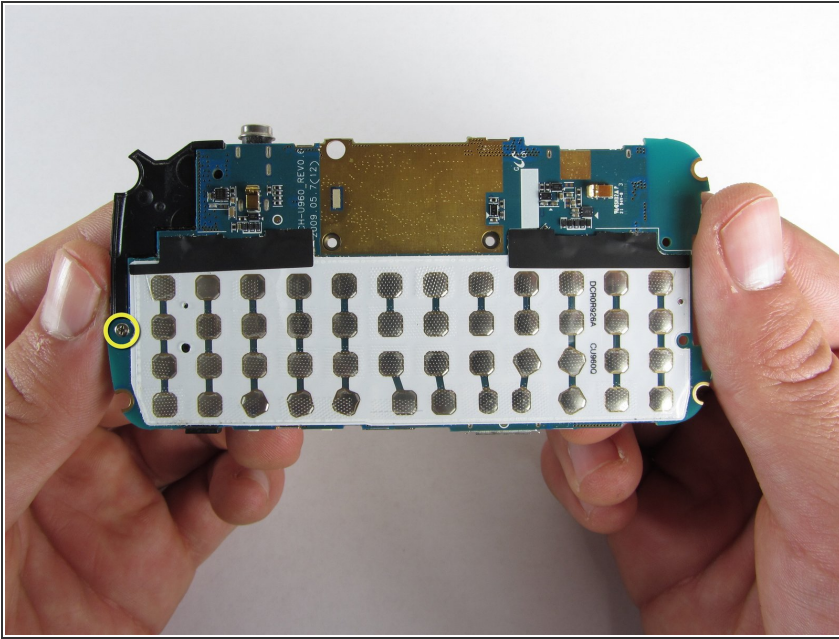
⚠ The film of wires is still attached to the motherboard, so do not completely remove the motherboard just yet or you may damage it.

Step 8



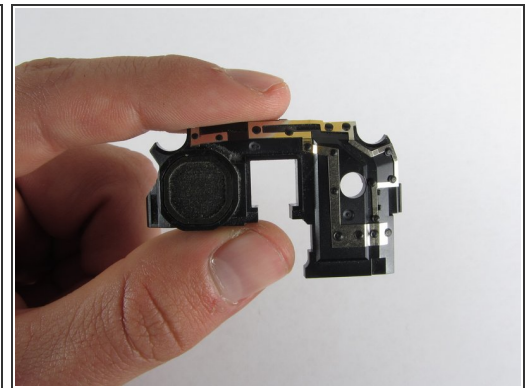
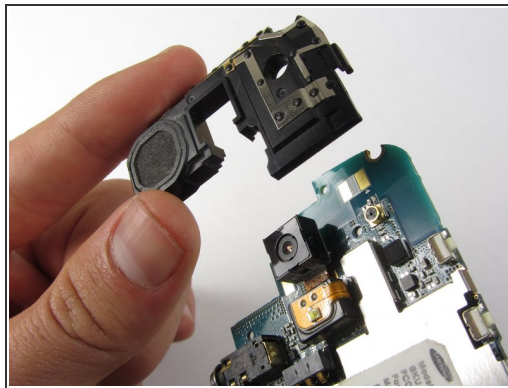
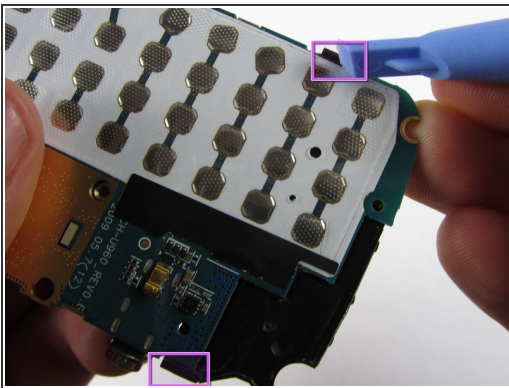
- Use a plastic opening tool to disconnect the film from the motherboard.

Step 9 — Speaker/Antenna



- On the underside of the motherboard, remove the single 3.3mm Philips screw.

Step 10



- ⓘ The speaker and the antenna are both connected on the same black piece.
- Use a plastic opening tool to pop off the edges of the speaker/antenna piece from the motherboard.
- Turn over the motherboard and carefully lift the speaker/antenna piece straight up.
- ⚠ The camera is held in the middle of the speaker/antenna piece. Make sure to lift directly up when lifting the speaker/antenna piece, otherwise you can risk damaging the camera.

To reassemble your device, follow these instructions in reverse order.