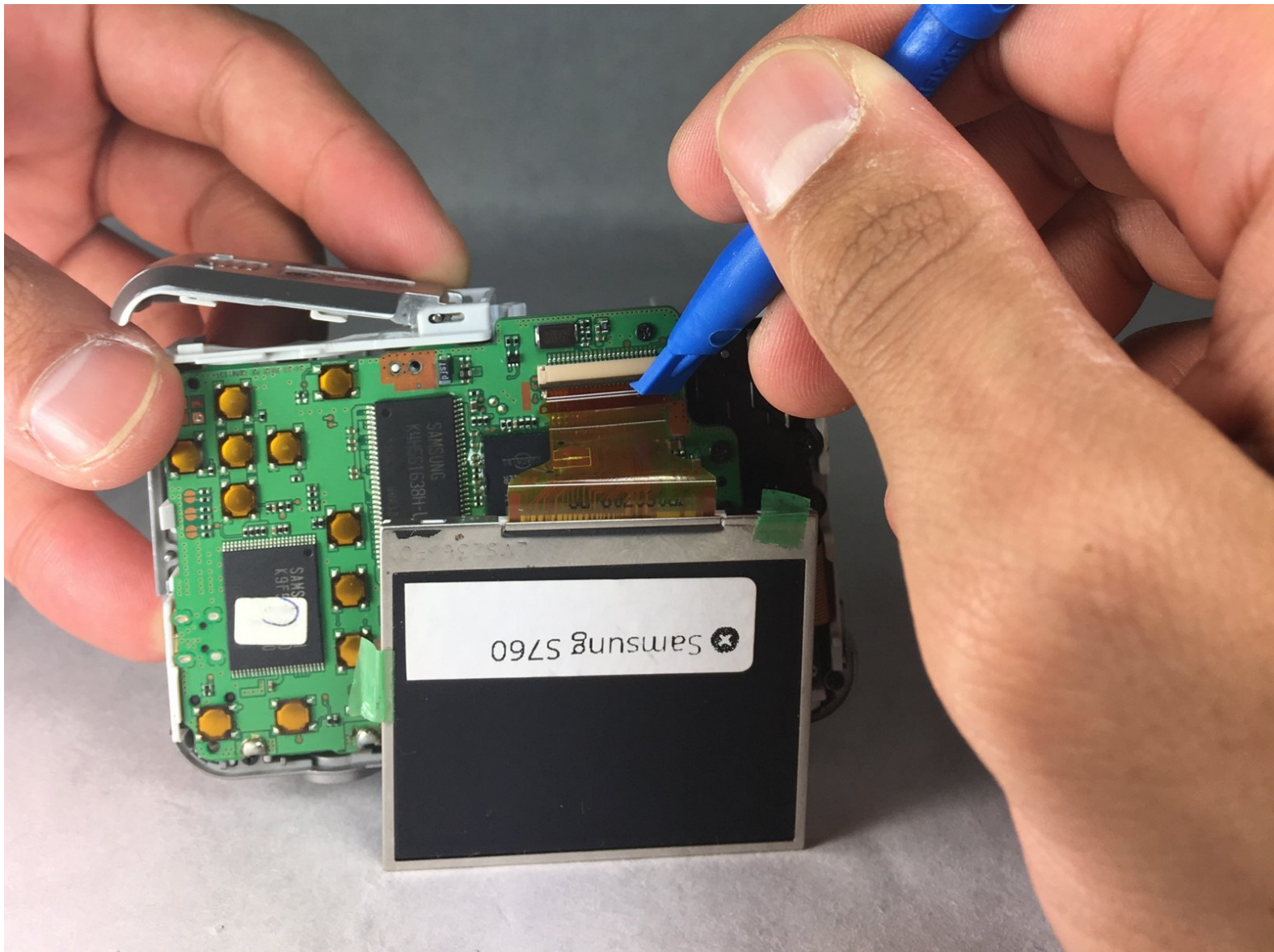




Samsung S760 LCD Screen Replacement Guide

Replace the LCD screen in the Samsung S760 camera.

Written By: Isaiah Weidmann



INTRODUCTION

The LCD screen can be cracked or water damaged



TOOLS:

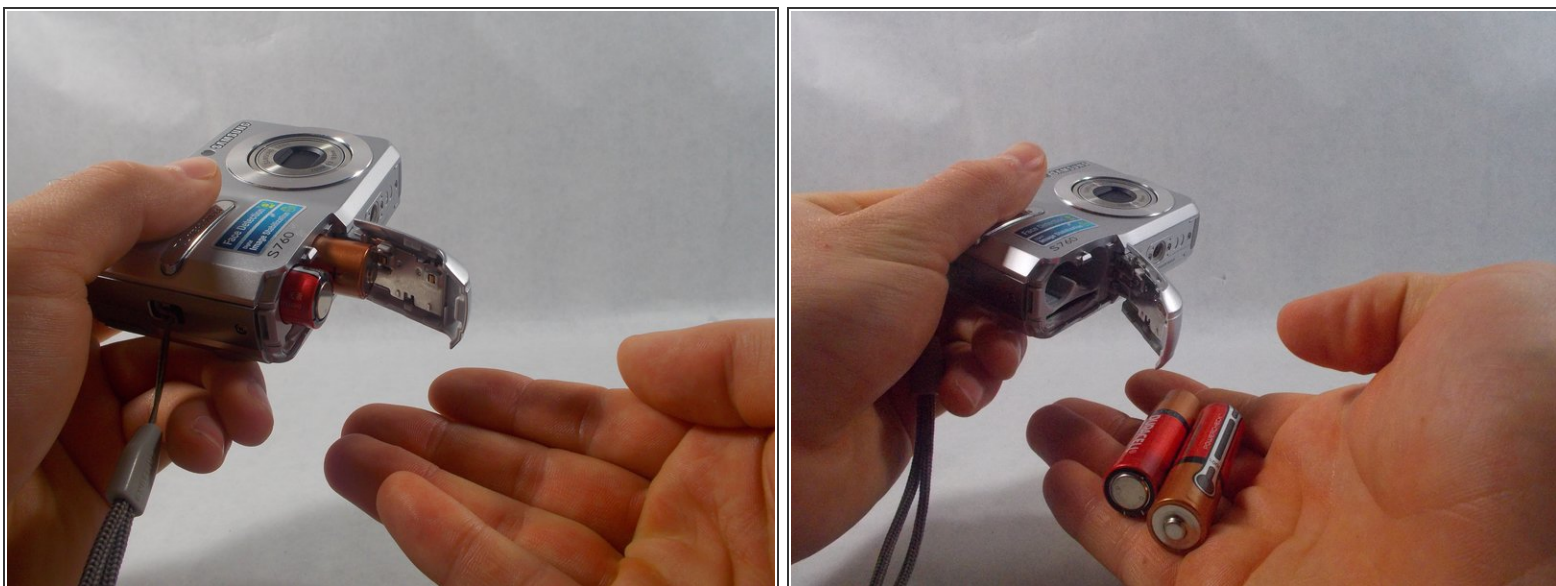
- [Phillips #000 Screwdriver](#) (1)
 - [iFixit Opening Tools](#) (1)
-

Step 1 — Battery



- Placing your thumb on the battery cover, push outwards, away from the camera in the direction the arrow is pointing. If done correctly when it's completely unhooked, the latch will open.

Step 2




- Tip the camera as to gently slide the batteries out of the camera.

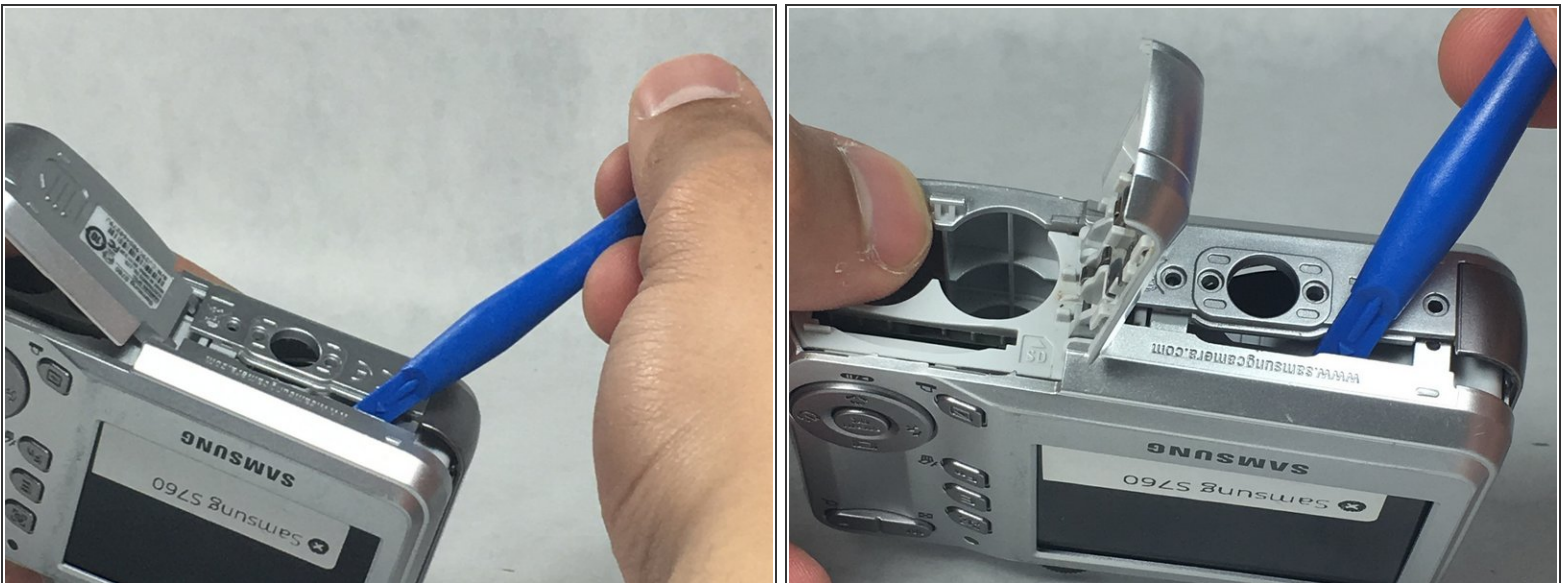
Step 3 — LCD Screen



- Locate and remove the six 4mm screws on the sides of the camera, using the Phillip Screwdriver #000 bit.

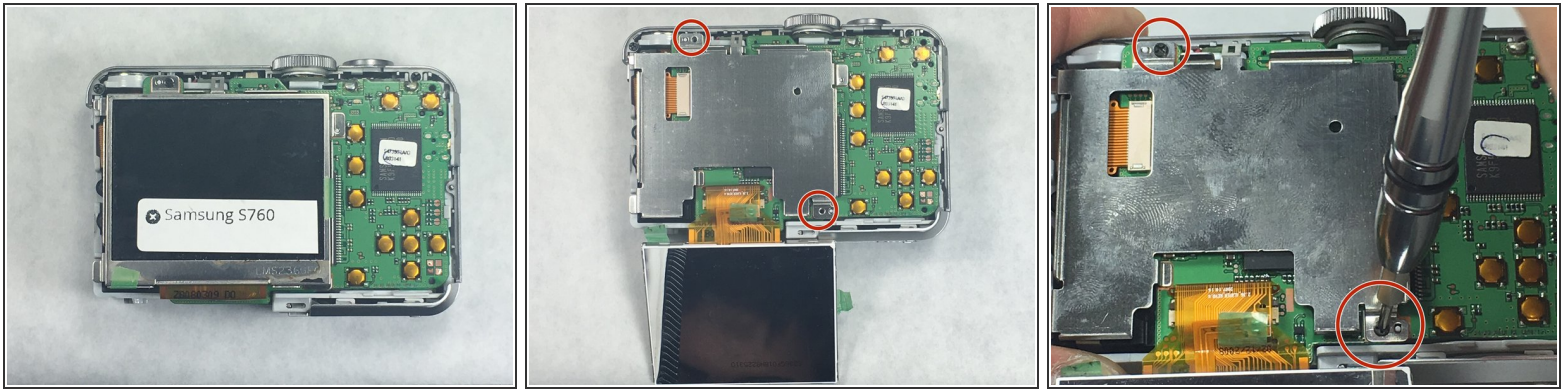
 Screw dimensions refer to screw *lengths*.

Step 4



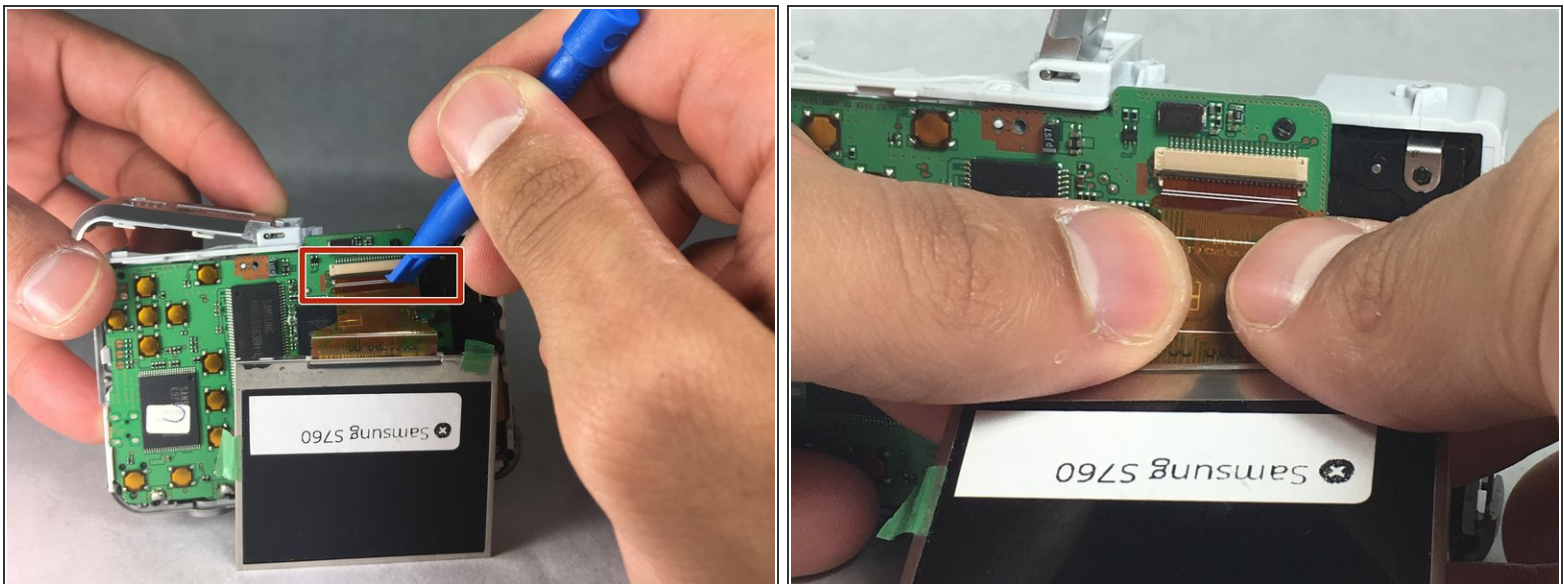
- Use the plastic opening tool to open pry open the back case, following alongside the edge of the case if need be.

Step 5



- Under the LCD screen, remove the metal plate by removing the two 3mm screws holding it in place.

Step 6



- Use the plastic opening tool to gently lift the small gray clip covering the ribbon cable connection.
- Carefully pull out the ribbon cable.

To reassemble your device, follow these instructions in reverse order.