



Samsung S85 Rubber Door Replacement

If the rubber door becomes jammed or misaligned due to dust, dirt, or detached hinges, you may wish to replace it.

Written By: Avinash Salgam



INTRODUCTION

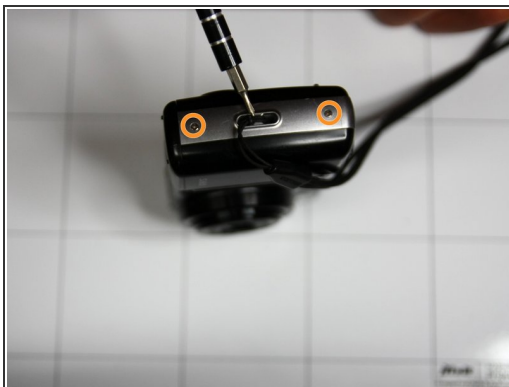
This guide will show a user how to take off the rubber door for replacement.



TOOLS:

- [Phillips #00 Screwdriver](#) (1)
 - [Tweezers](#) (1)
 - [Soldering Workstation](#) (1)
-

Step 1 — Rubber Door



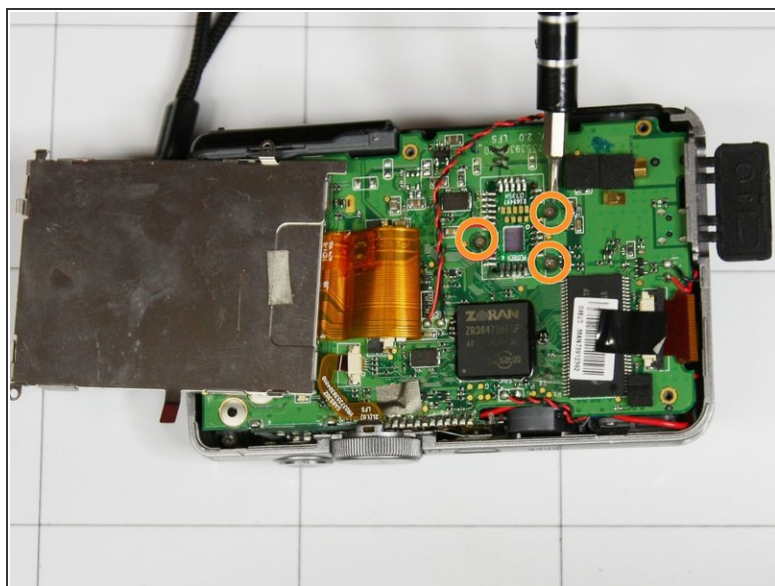
- Remove 4 screws from bottom of camera
- Remove 2 screws from side of camera
- Remove 2 screws from side of camera
- ☑ Place Screws on magnetic surface or location where they will not roll away

Step 2



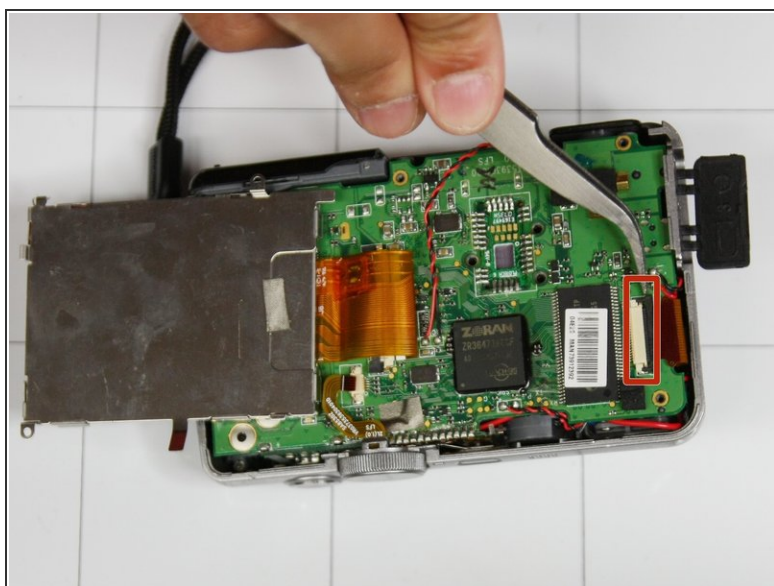
- Squeeze area noted by blue square and pull outside shell apart from remaining camera.

Step 3



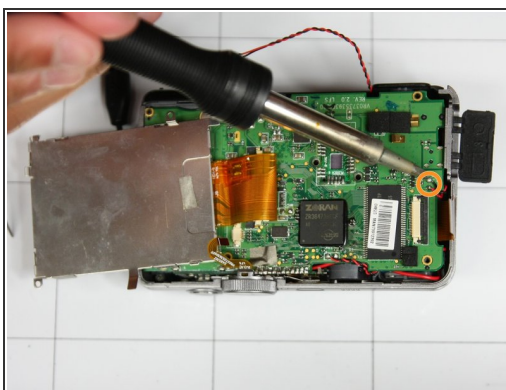
- Remove 6 screws identified by red circles
- Remove 3 screws identified by orange circles

Step 4



- Gently remove orange circuit ribbon identified by red square
- Gently remove narrow orange circuit ribbon identified by blue square

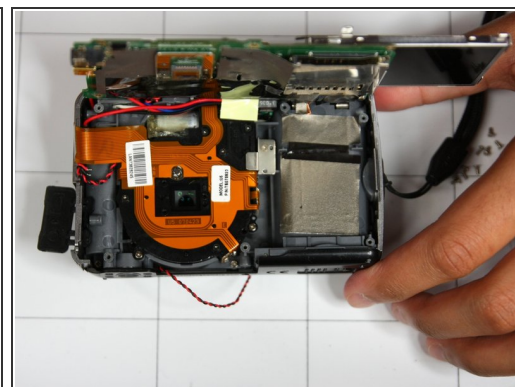
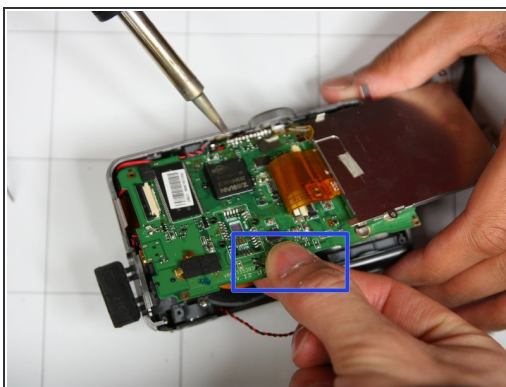
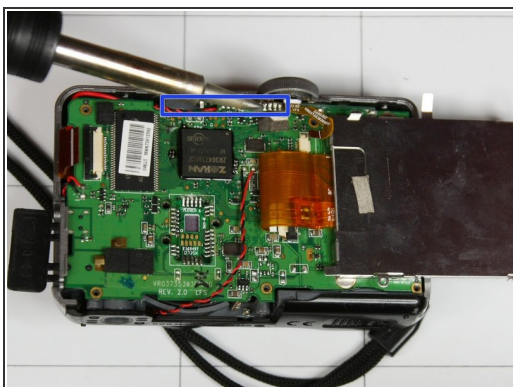
Step 5



⚠ Be very cautious when using a soldering iron (they are on average 300 F)

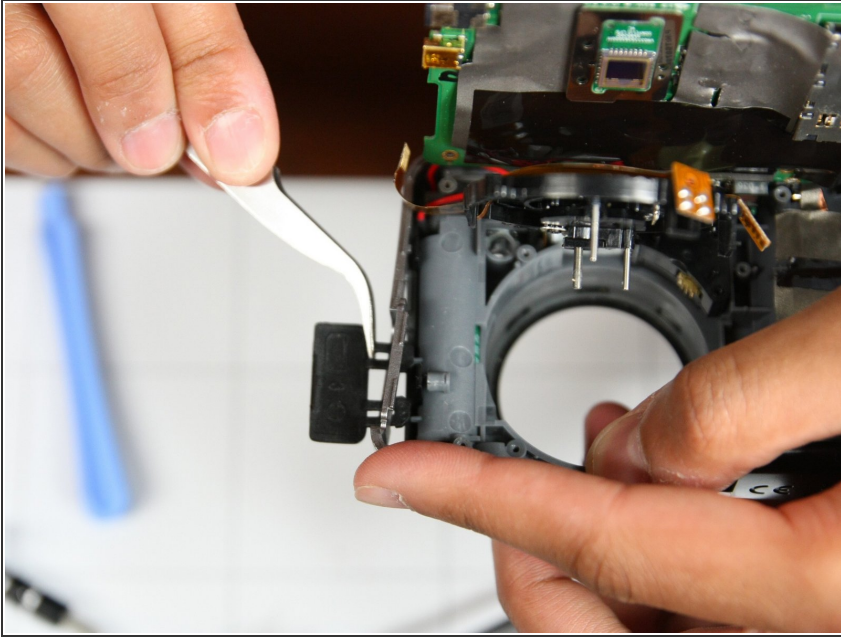
- Using a soldering iron, remove solder from wire identified by red circle
- Using a soldering iron, remove solder from black and red wire identified by orange circle
- Using a soldering iron, remove solder from wire identified by yellow circle

Step 6



- Using soldering iron, melt away solder and warm up metal located at top of circuit board as shown in picture
- Repeat step two to three times until board feels flexible to bend
- Slowly bend circuit board upwards (towards power button) until at 90 degree angle with remaining part of camera.

Step 7



- Remove black rubber door located on side of camera closest to lens using tweezers.
- ⚠ Be careful not to bend or tear the rubber when pulling out with tweezers as it may become difficult to put back in

To reassemble your device, follow these instructions in reverse order.