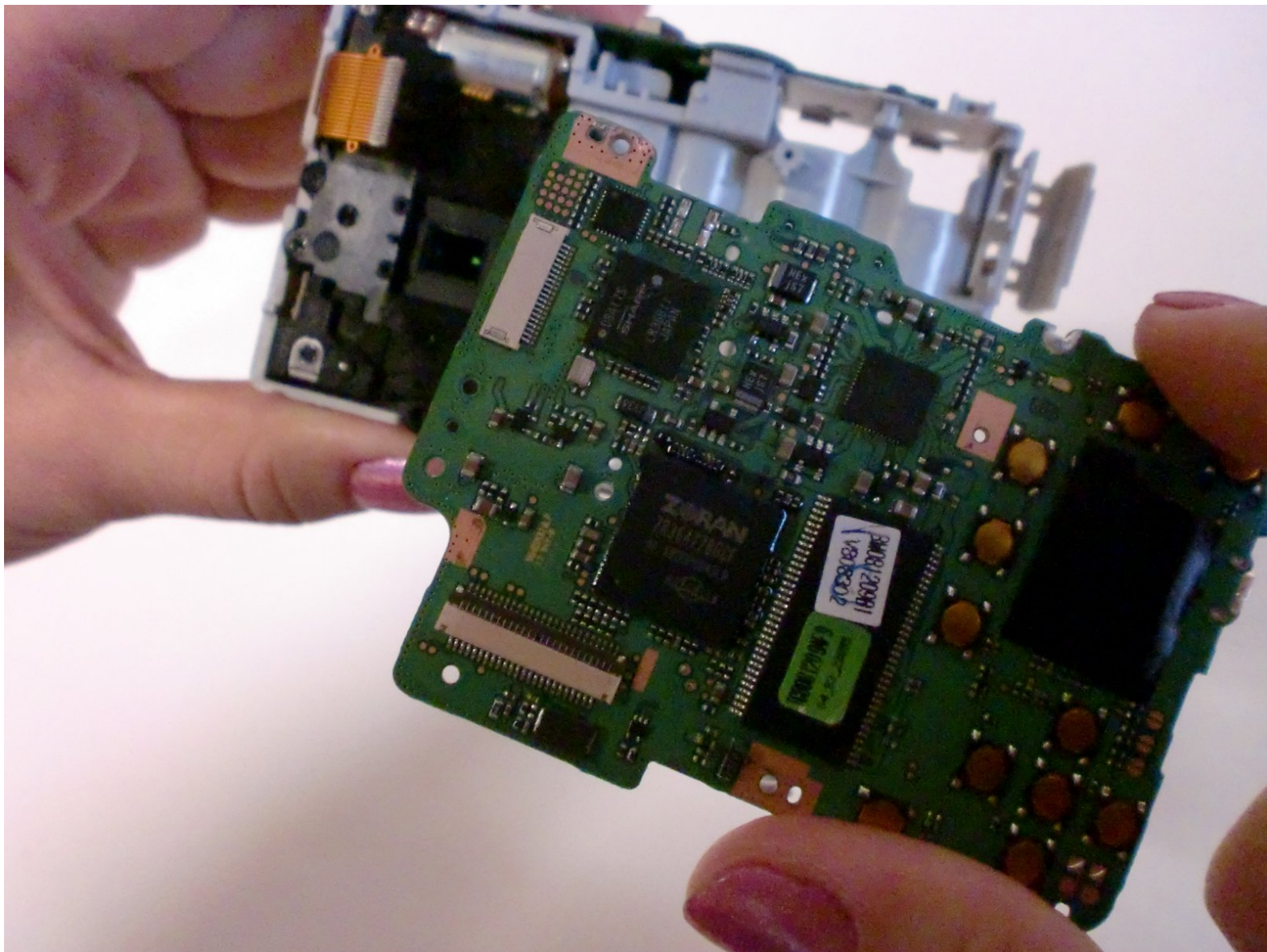




Samsung S860 Logic Board Replacement

Written By: Kando Ogunrinola



INTRODUCTION

The logic board is the "motherboard" of the camera that contains all of the main circuits and important components necessary to make the device run efficiently. If the logic board is old, faulty, or damaged, this may prevent the camera from working properly.

TOOLS:

- [Tweezers](#) (1)
 - [Phillips #00 Screwdriver](#) (1)
-

Step 1 — Battery



- With the camera facing LCD side up, slide the battery compartment lid to the right.
- Remove old batteries.

Step 2 — LCD Screen



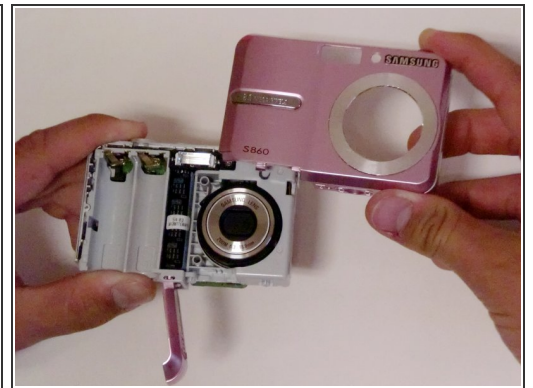
- Remove all screws along the edges of the camera, using a #00 Phillips screwdriver.

Step 3



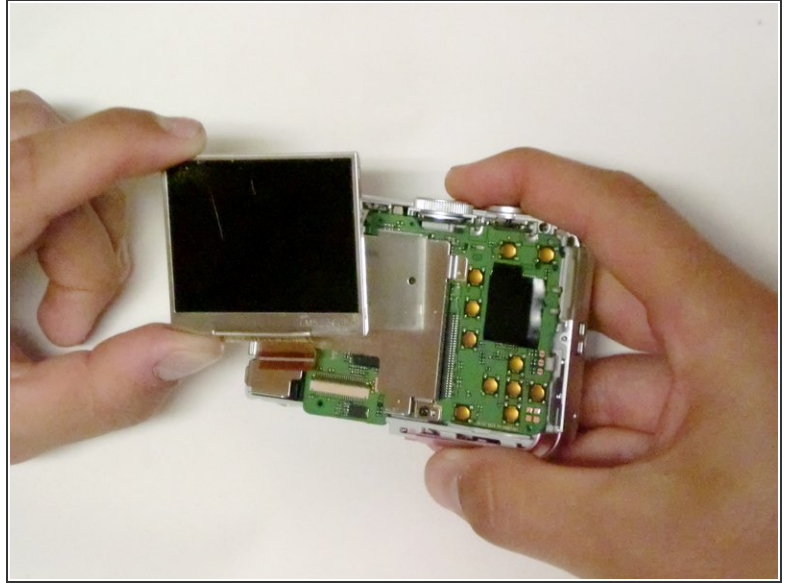
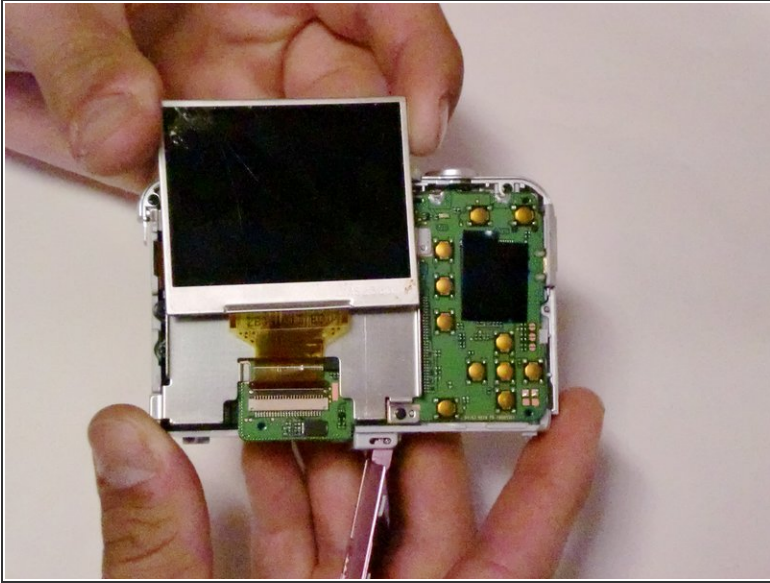
- Slide open the battery compartment cover before removing the exterior covers of the camera.

Step 4



- Carefully pull the back case (the side showing the LCD screen) away from the front half.
- There are clips securing the top of the back case. Do not be afraid to use the proper amount of force to remove the back case.
- Turn the camera around to the front (the lens side). Carefully remove the front case.
- There are also clips on the lens' side as well, so do not be afraid to use force.

Step 5



- Position the camera so the LCD screen is facing you.
- Remove the LCD screen from the screen plate.
- Replace the broken LCD screen with the functioning LCD screen.

Step 6 — Logic Board



- Remove all screws along the edges of the camera, using a #00 Phillips screwdriver.
- The screws should be 4.3 mm in length.
- Save them for putting the camera back together.

Step 7



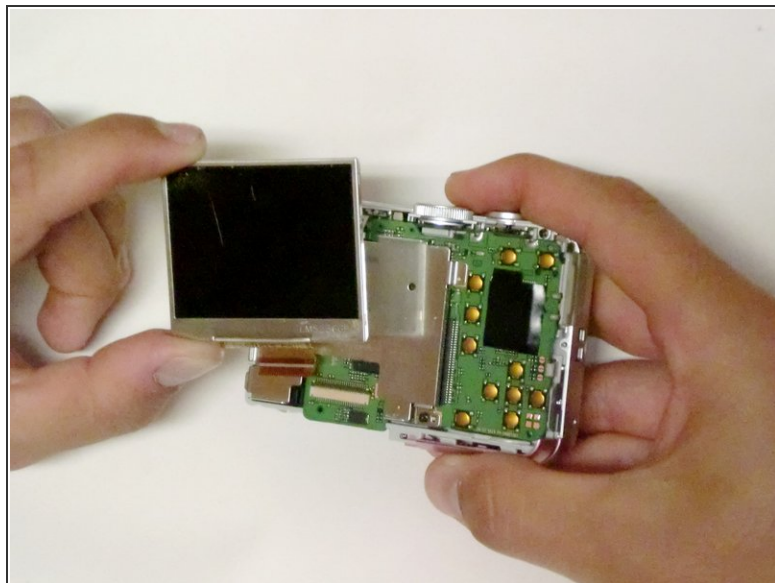
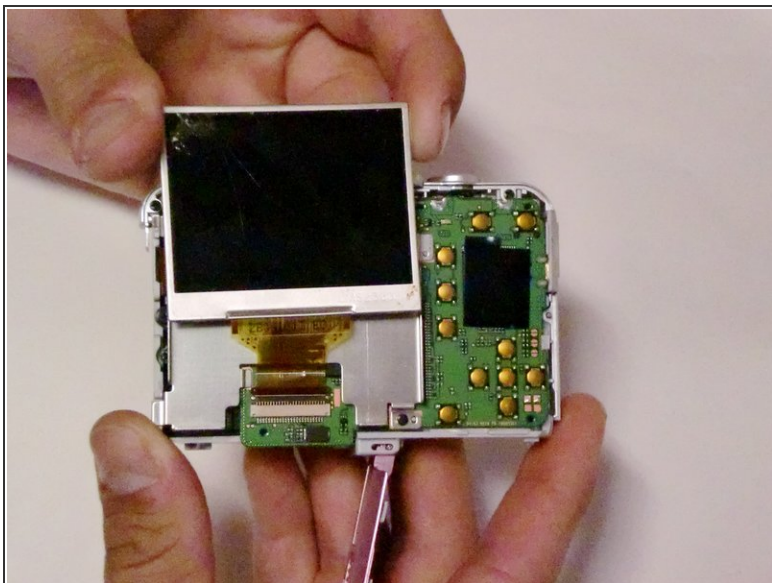
- Turn the bottom edge of the camera towards you.
- Slide open the battery chamber.
- This must be done to remove the exterior covers of the camera.

Step 8



- Carefully pull the back of the camera (the LCD screen side) away from the front.
- There are clips securing the top of the back case. Do not be afraid to use the proper amount of force to remove the back case.
- Turn the camera to the front (the flash side). Carefully remove.
- There are clips on this side as well. Again, do not be afraid to use force.

Step 9



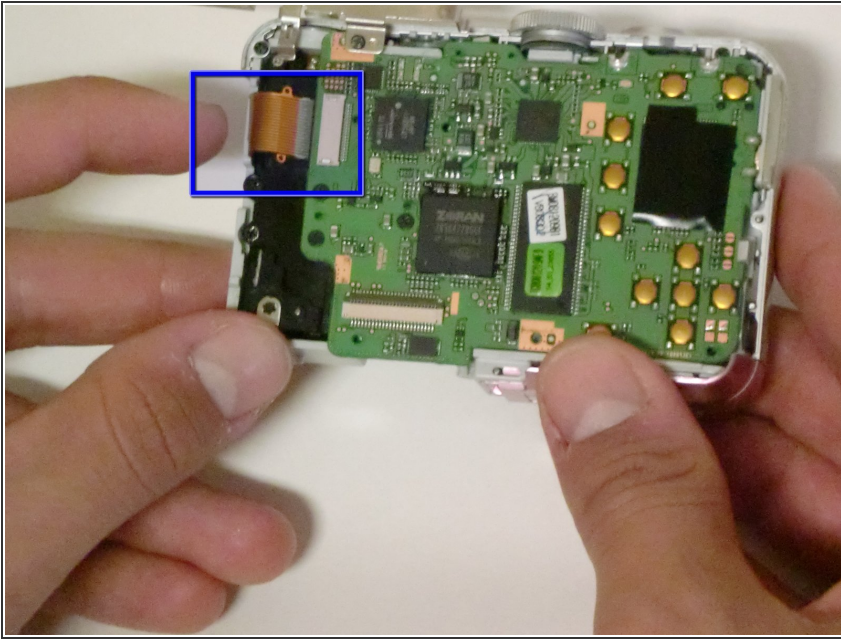
- Orient the camera so the LCD screen is facing you.
- Remove any tape holding it down, and then lift the LCD screen from the screen plate.
- Lift the hinged lip where the ribbon enters the connector. Remove the ribbon from the logic board by pulling it gently away from the logic board.

Step 10



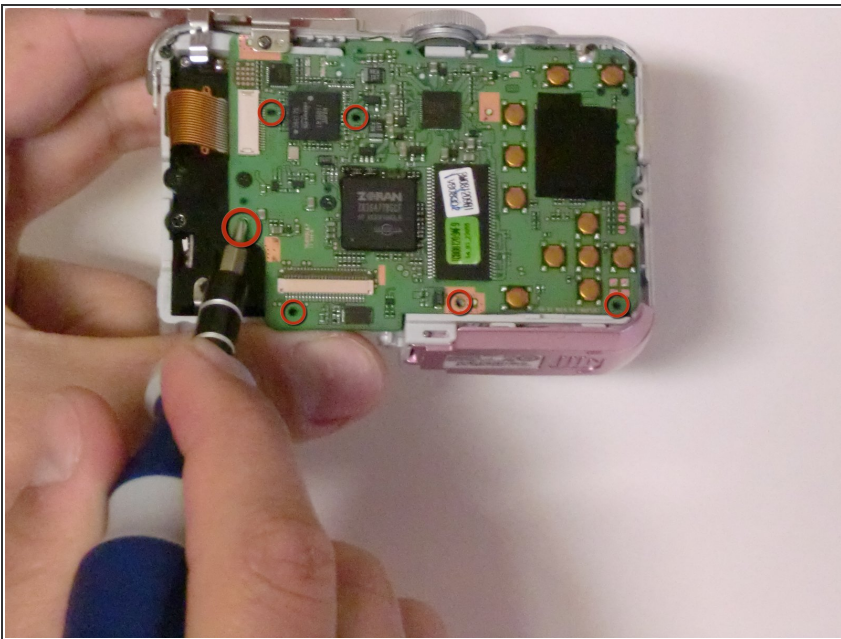
- Remove all screws from the screen plate, using a #00 Philips screwdriver.
- The screws should be 4.5 mm in length.
- Separate the screen plate and logic board.

Step 11



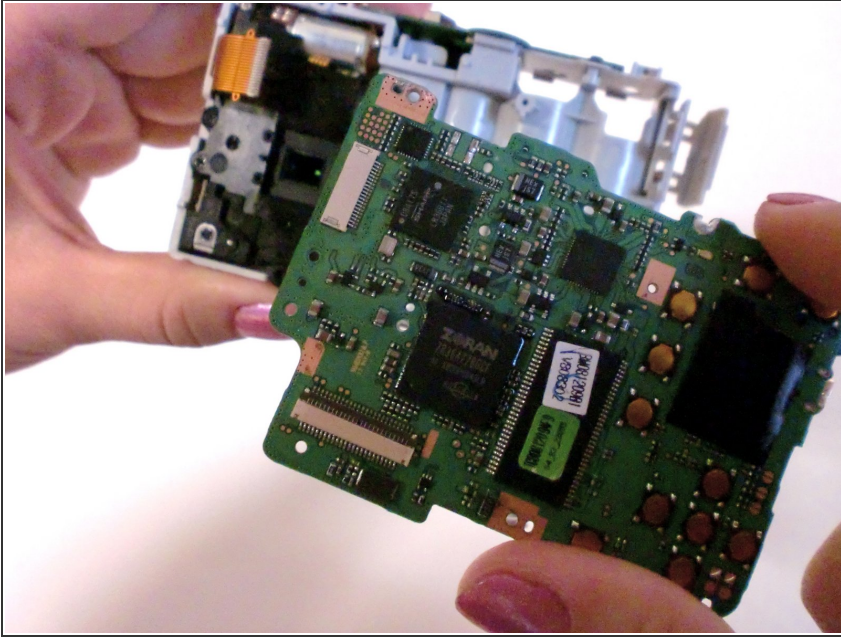
- There is another ribbon attached to the logic board. It is located on the upper left edge of the logic board.
- Similar to the other ribbon, remove by gently pulling in the opposite direction of the logic board. The "ears" on the cable can be used to help pull it free.

Step 12



- Using a #00 Philips screwdriver, unscrew the screws connecting the logic board to the camera.
- You should be removing three 3.32 mm long screws.
- Separate the logic board and the core of the camera.

Step 13



- To separate the logic board from the camera, carefully pull the logic board away from the camera.
- Be careful not to damage the battery compartment. The battery sensors are attached to the logic board, so be gentle.
- The USB connector is going to want to hang up on the housing, but once you have that free, the battery leads will slide out relatively easily.

To reassemble your device, follow these instructions in reverse order.