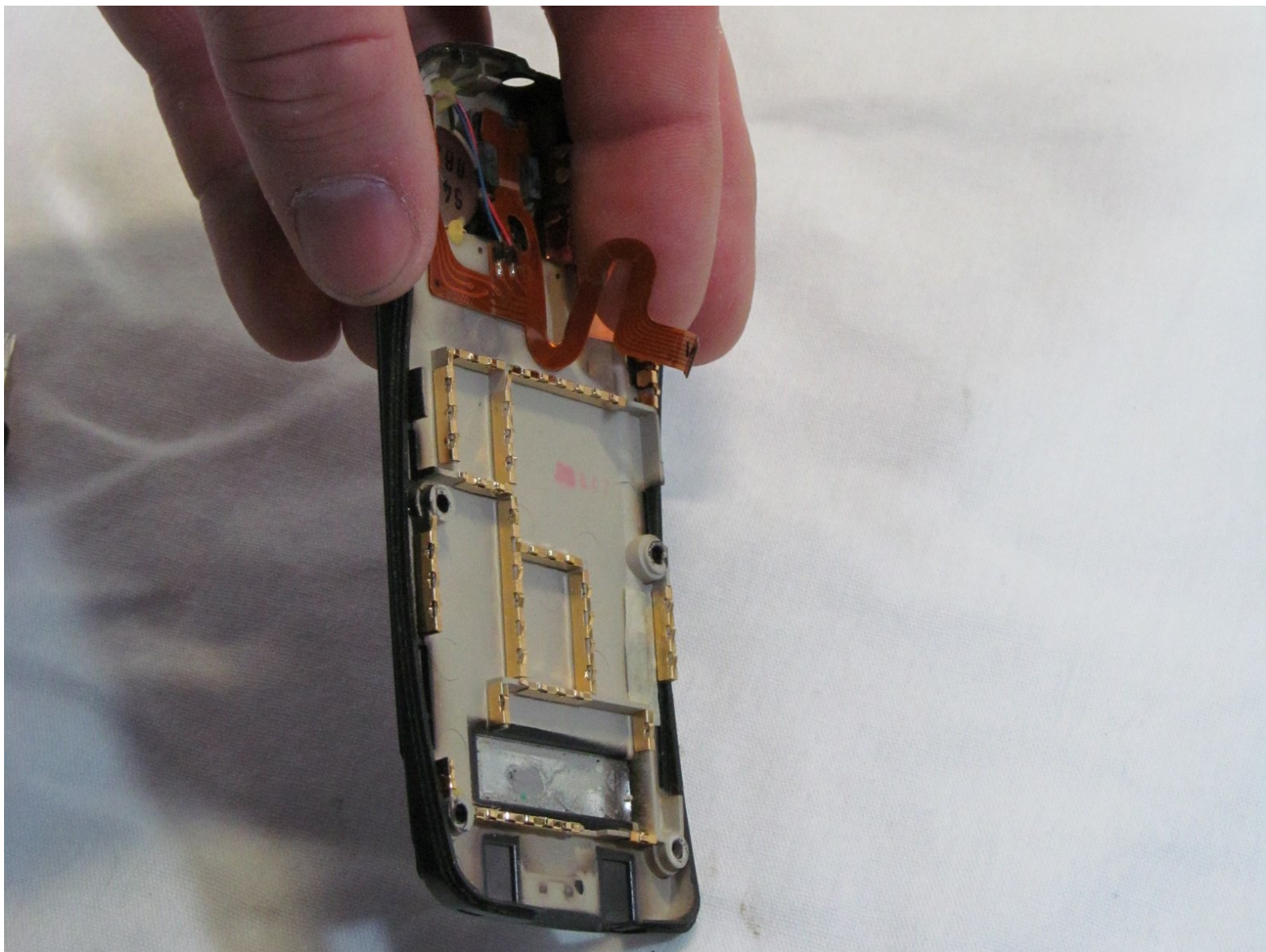




# Samsung SCH-3500 Back Cover Replacement

Back cover installation requires the use of T6 Torx screwdriver and some manual dexterity.

Written By: Brett Tomashitis





## TOOLS:

- [T6 Torx Screwdriver](#) (1)
  - [Tweezers](#) (1)
-

## Step 1 — Battery



- Place the phone so that the back is facing you. Depress the locking tab on the back of the phone with a finger or thumb.

## Step 2



- Slide the battery toward bottom of the phone, about a quarter of an inch, to clear the hooks that keep it secured to the back of the phone.



### Step 3



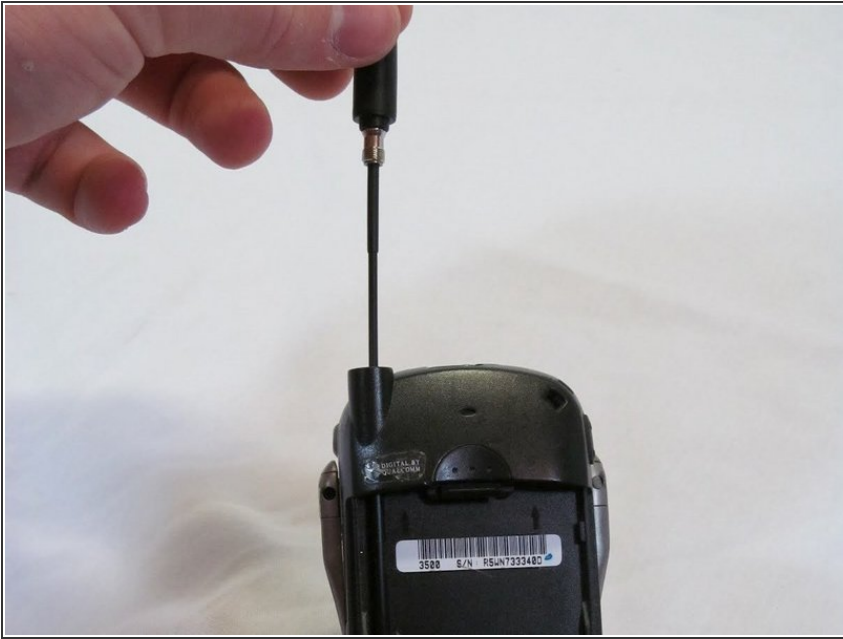
- Lift the battery away from the phone case.

### Step 4 — Antenna



- Grasp the antenna firmly and rotate it counterclockwise to unscrew it from the phone.

## Step 5



- When unscrewed, pull the antenna straight up and out.

## Step 6



- Pull the guide tube free from its retaining ring and slide it out the top.

## Step 7 — Back Cover



- Remove the four screws using a T6 Torx screwdriver.

## Step 8

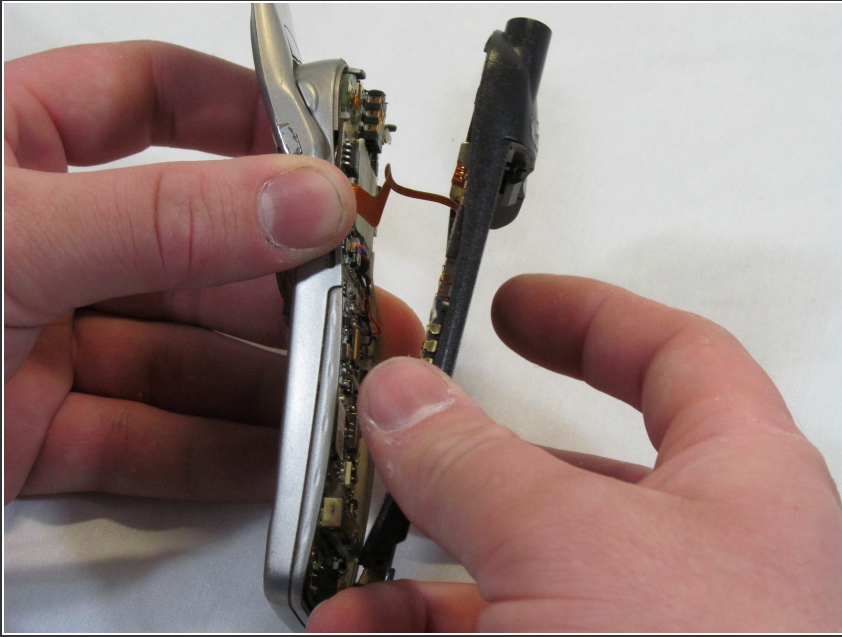


- Work from the bottom of the phone, separating the two halves of the case.

**i Note:** Take care to keep the logic board with the front case half. Part of the logic board is exposed to the sticker under the battery on the rear case half.



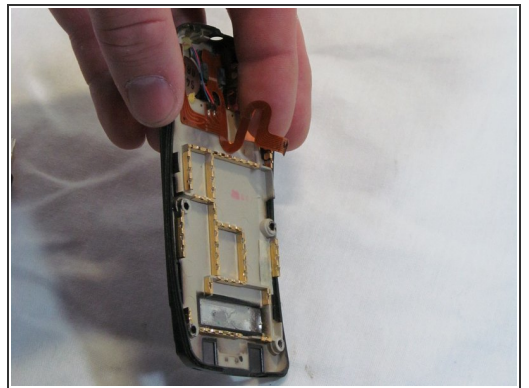
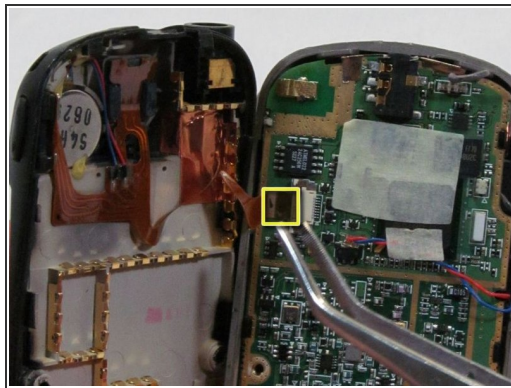
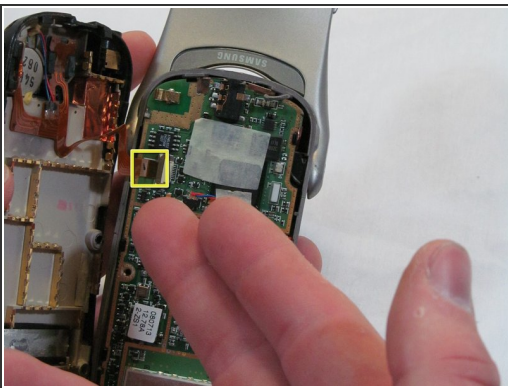
## Step 9



- Angle the rear case half away from the top of the front case half, pivoting the hooks out of their clasps.

**⚠ Caution:** Do not fully separate the halves. There is an antenna ribbon connected to the logic board from the back cover.

## Step 10



- Disconnect the antenna ribbon cable from the logic board at the Zero Insertion Force (ZIF) connector. The brown portion of the connector lifts up to release the cable end.
- The Back Cover is now removed. Congratulations.

To reassemble your device, follow these instructions in reverse order.