



Samsung SCH-3500 Logic Board Replacement

Installation of the logic board requires the use of a T6 Torx screwdriver and some manual dexterity.

Written By: Brett Tomashitis





TOOLS:

- [T6 Torx Screwdriver](#) (1)
 - [Tweezers](#) (1)
-

Step 1 — Battery



- Place the phone so that the back is facing you. Depress the locking tab on the back of the phone with a finger or thumb.

Step 2



- Slide the battery toward bottom of the phone, about a quarter of an inch, to clear the hooks that keep it secured to the back of the phone.

Step 3



- Lift the battery away from the phone case.

Step 4 — Antenna



- Grasp the antenna firmly and rotate it counterclockwise to unscrew it from the phone.

Step 5



- When unscrewed, pull the antenna straight up and out.

Step 6



- Pull the guide tube free from its retaining ring and slide it out the top.

Step 7 — Back Cover



- Remove the four screws using a T6 Torx screwdriver.

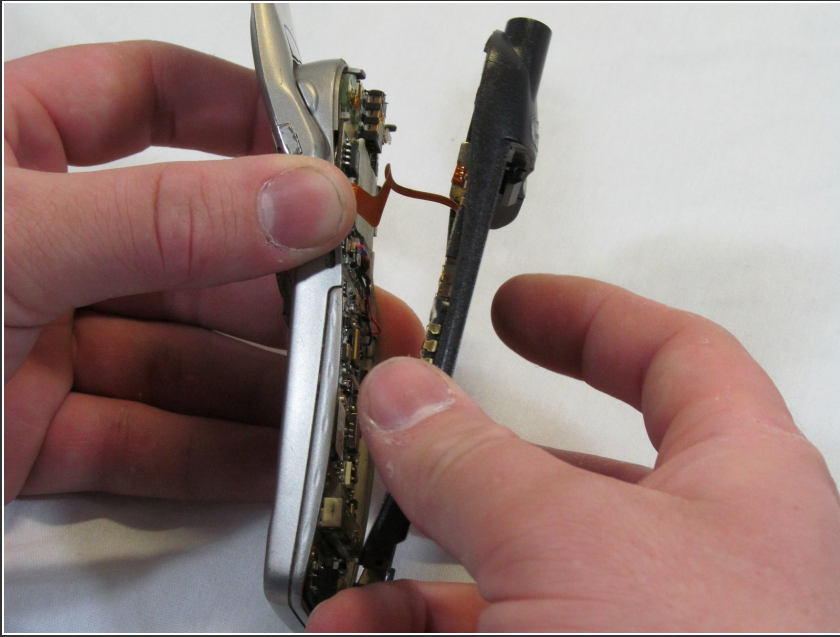
Step 8



- Work from the bottom of the phone, separating the two halves of the case.

i Note: Take care to keep the logic board with the front case half. Part of the logic board is exposed to the sticker under the battery on the rear case half.

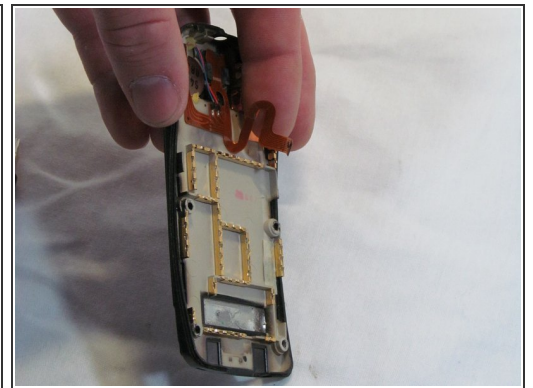
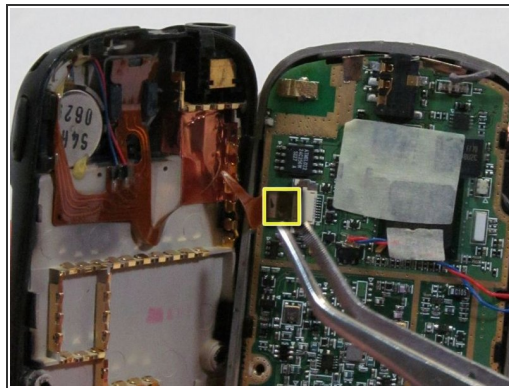
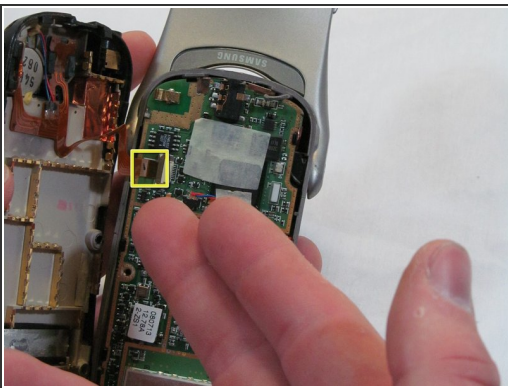
Step 9



- Angle the rear case half away from the top of the front case half, pivoting the hooks out of their clasps.

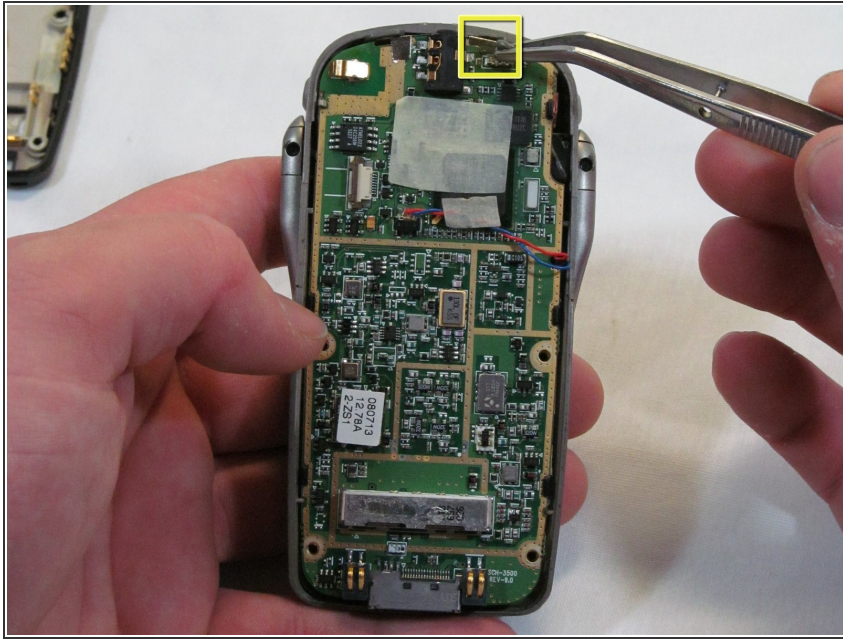
⚠ Caution: Do not fully separate the halves. There is an antenna ribbon connected to the logic board from the back cover.

Step 10



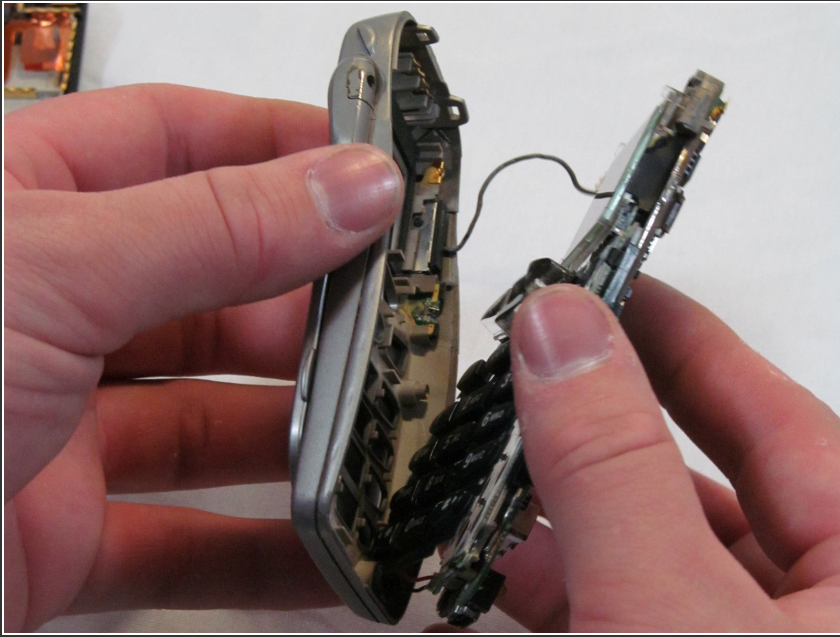
- Disconnect the antenna ribbon cable from the logic board at the Zero Insertion Force (ZIF) connector. The brown portion of the connector lifts up to release the cable end.
- The Back Cover is now removed. Congratulations.

Step 11 — Logic Board



- Remove the connector for the earpiece speaker, located on the upper end of the logic board.

Step 12



- Turn the front cover over, gently prying the logic board away from the front cover. It will remain attached by two wires from the front of the board.

Step 13



- Work the microphone out of its socket on the front cover; it will remain attached to the logic board, its wires are soldered.
- The logic board is now removed from the phone. Congratulations.

To reassemble your device, follow these instructions in reverse order.