



# Samsung SCH-8500 Keypad Replacement

This guide demonstrates how to install the keypad on a Samsung SCH-8500.

Written By: Will Gunter



---

## INTRODUCTION

This guide will teach you how to get to and replace the plastic keypad from the phone.

---



### TOOLS:

- [Spudger](#) (1)
  - [T6 Torx Screwdriver](#) (1)
-

## Step 1 — Battery



- To separate the battery from the phone, use your thumb to push in the button as shown.
- Keep the unlock button pressed as you slide the battery away from the button.
- Pull the battery away from the phone.

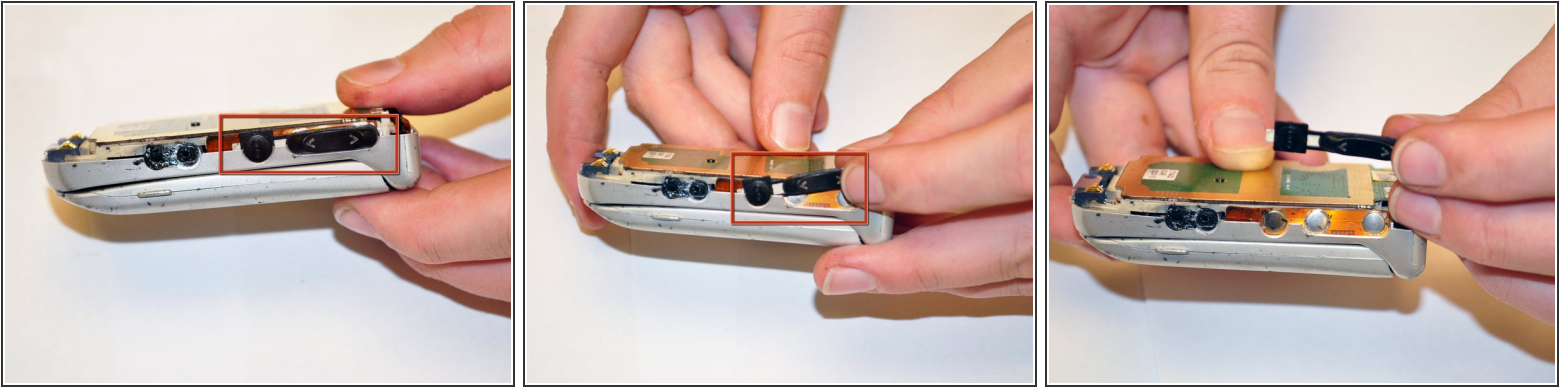
## Step 2 — Back Case



- Use a T6 Torx screwdriver to remove the highlighted screws.
- ⓘ These are the four screws, about 10 mm long, that need to be removed. Be careful with the screws as they are small and easy to misplace.
- Carefully pry apart the two pieces, laying the back case to the side.

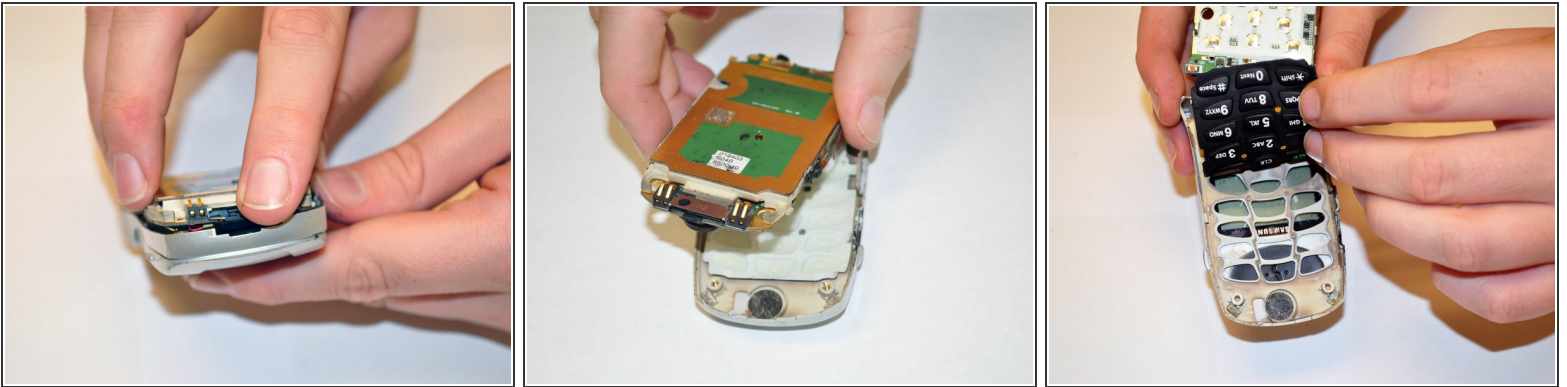


### Step 3 — Volume Button



- With the back case fully removed and out of the way, use your fingers to remove the volume button.
- ⓘ Use caution in removal to prevent damaging any circuitry in the phone.

### Step 4 — Keypad



- ⚠ The circuit board is hardwired to other components in the phone and cannot be completely removed. Take extreme precaution when performing this step as to not damage the circuitry or the wiring.
- Lift the circuit board up slightly.
- With the circuit board lifted, remove the plastic keypad and place to the side.

To reassemble your device, follow these instructions in reverse order.