



# Samsung SCH-A670 Keypad Housing Replacement

Written By: Nathan Brink



---

## INTRODUCTION

The keypad may become broken over time, this guide will assist in the replacement of the keypad.

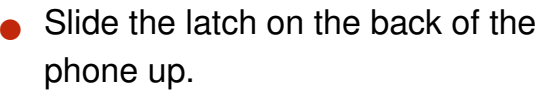
---



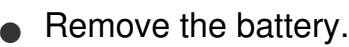
### TOOLS:

- [Phillips #00 Screwdriver](#) (1)
  - [Push Pin](#) (1)
  - [Spudger](#) (1)
-

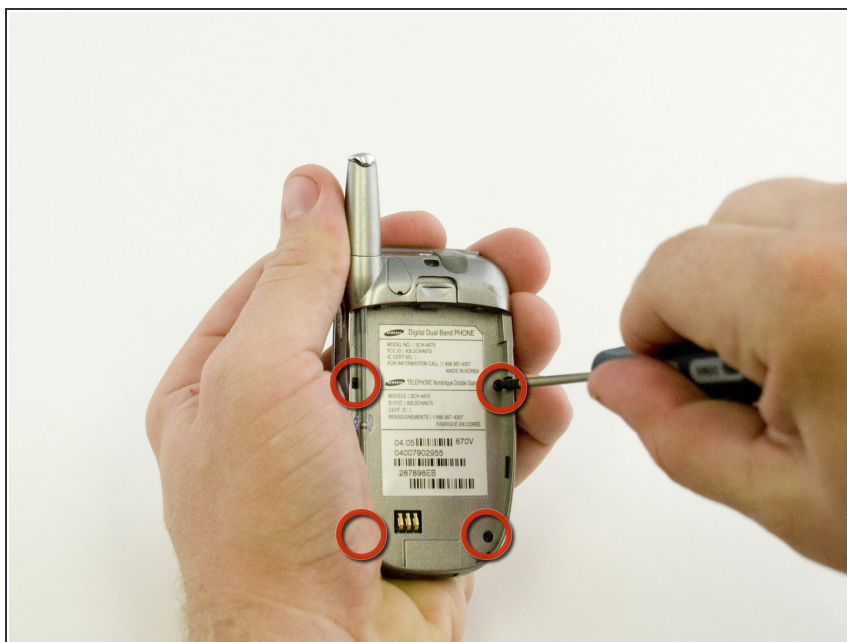
## Step 1 — Battery Cover



## Step 2 — Battery



## Step 3 — Logic Board



- After removing the battery, remove the four small Phillips-head screws with a #0 Phillips screwdriver.

## Step 4



- Using a thumbtack, pry the small plastic cover from the case near the base of the antenna.



## Step 5



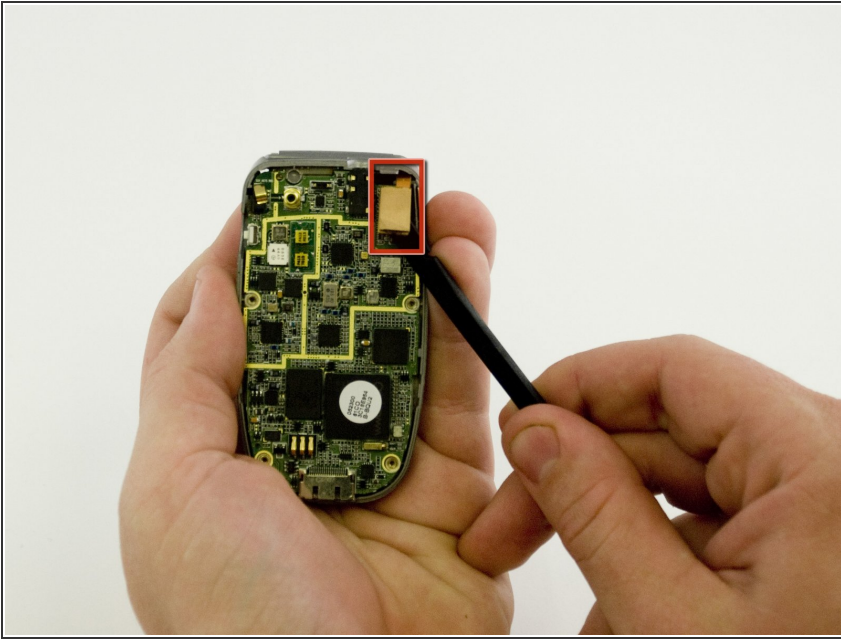
- With a #0 Phillips screwdriver remove the screw which you just uncovered.

## Step 6



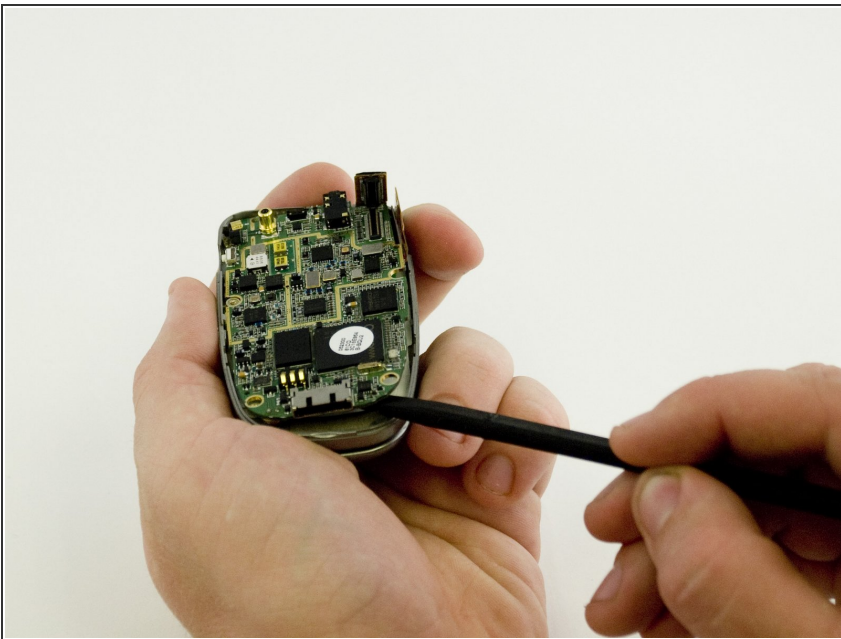
- Using the spudger, carefully pry the case apart starting near the charging port. Ease the case open.
- Then disconnect the small power connector near the top of the phone.

## Step 7



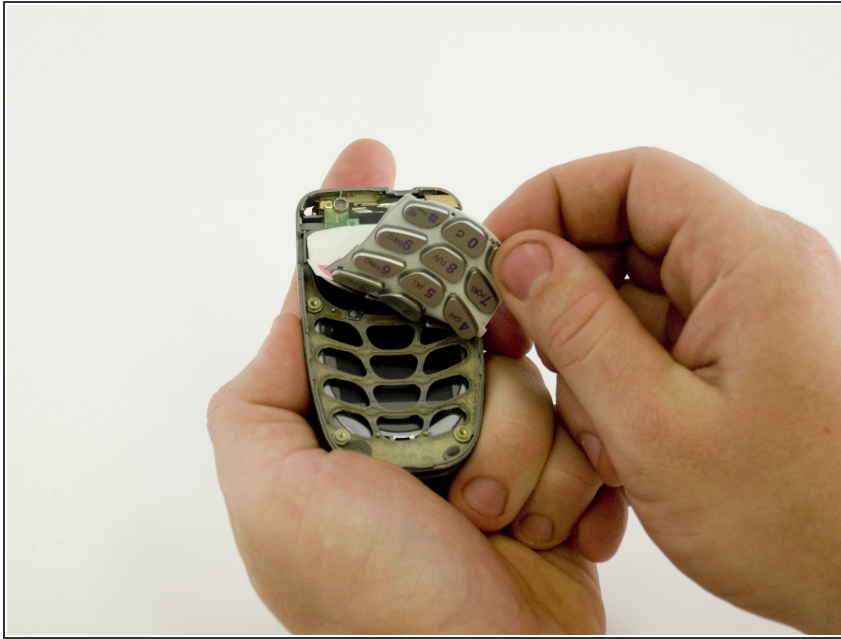
- Gently pry up the ribbon-type connector with the spudger.

## Step 8



- Carefully pry the logic board from the case with the spudger.

## Step 9 — Keypad



- Once the logic board has been removed, peel the keypad up.

## Step 10 — Keypad Housing



- When using a spudger the keypad housing comes off quite easily, although it may be necessary to guide the ribbon cable through the slot in the housing.

To reassemble your device, follow these instructions in reverse order.

This document was generated on 2019-10-19 05:50:07 AM (MST).

