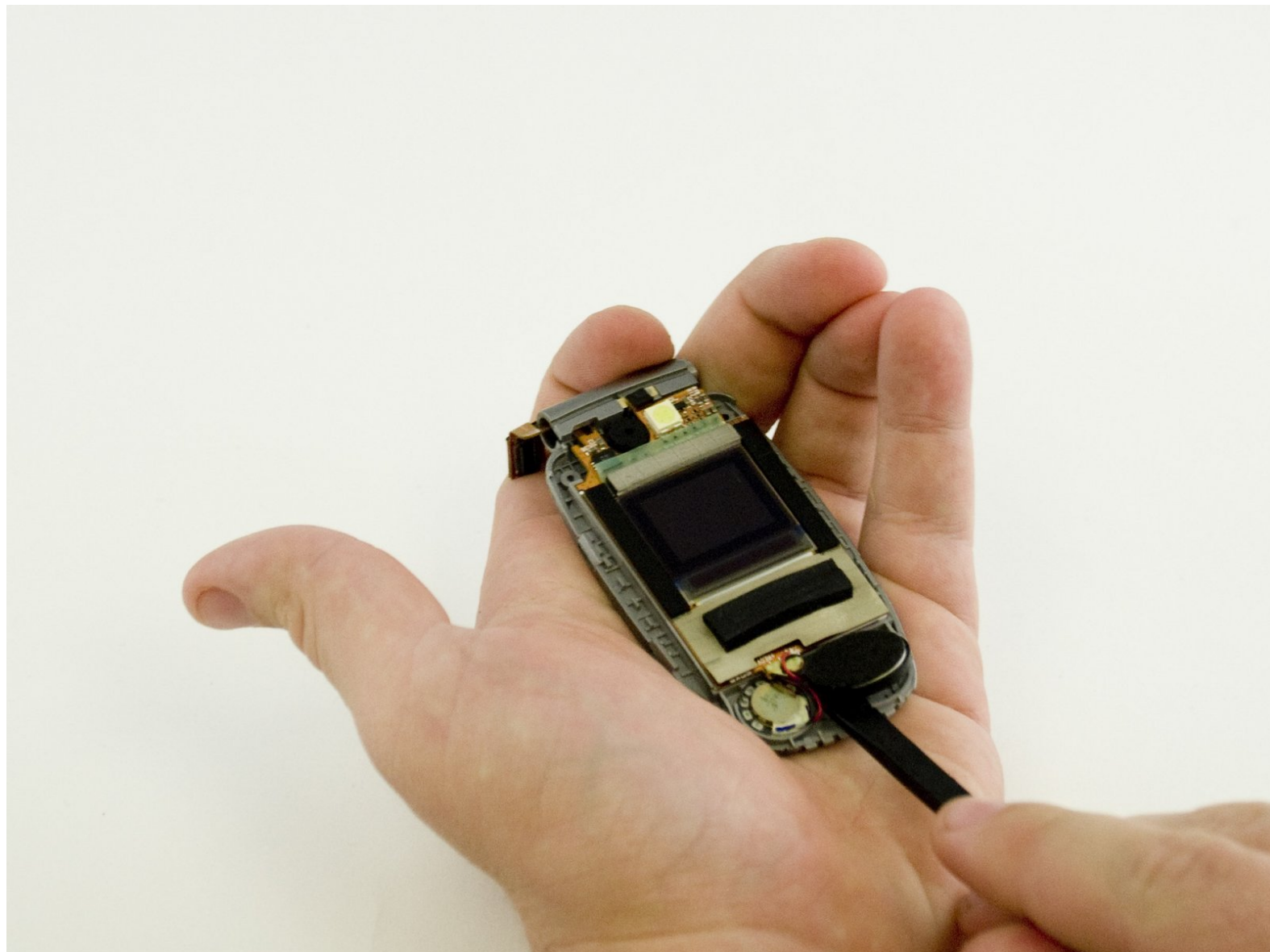




Samsung SCH-A670 Screen Replacement

Written By: Nathan Brink



INTRODUCTION

The screen may become broken over time. This guide will assist in the replacement of the screen.



TOOLS:

- [Spudger](#) (1)
-

Step 1 — Battery Cover



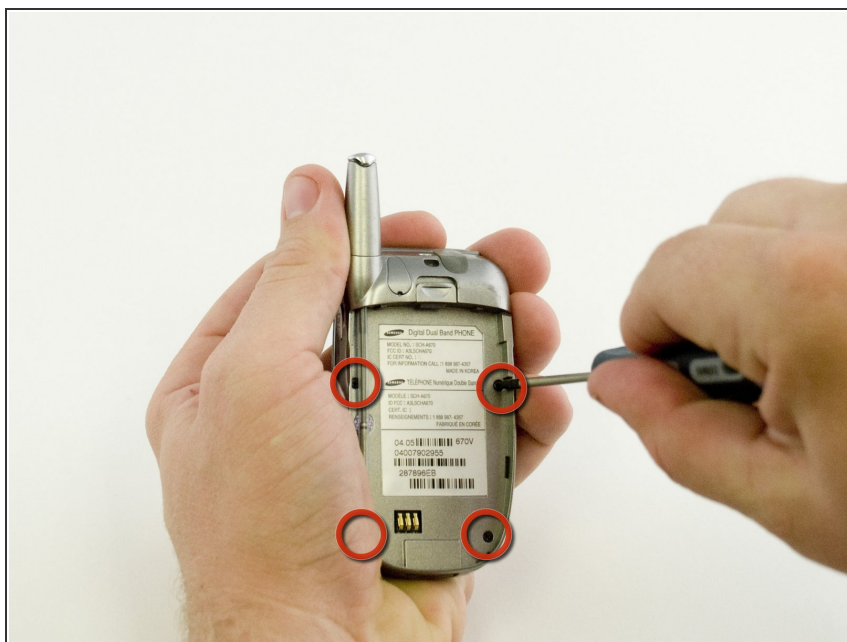
- Slide the latch on the back of the phone up.

Step 2 — Battery



- Remove the battery.

Step 3 — Logic Board



- After removing the battery, remove the four small Phillips-head screws with a #0 Phillips screwdriver.

Step 4



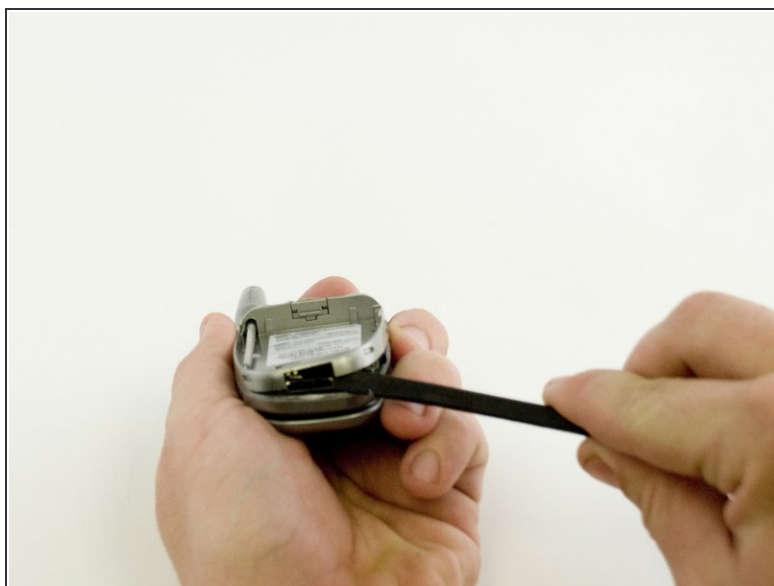
- Using a thumbtack, pry the small plastic cover from the case near the base of the antenna.

Step 5



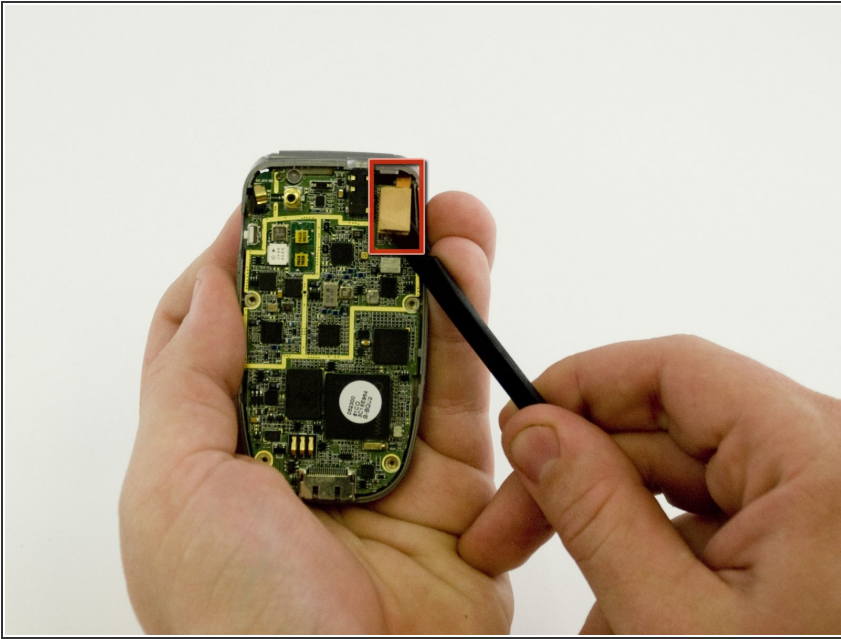
- With a #0 Phillips screwdriver remove the screw which you just uncovered.

Step 6



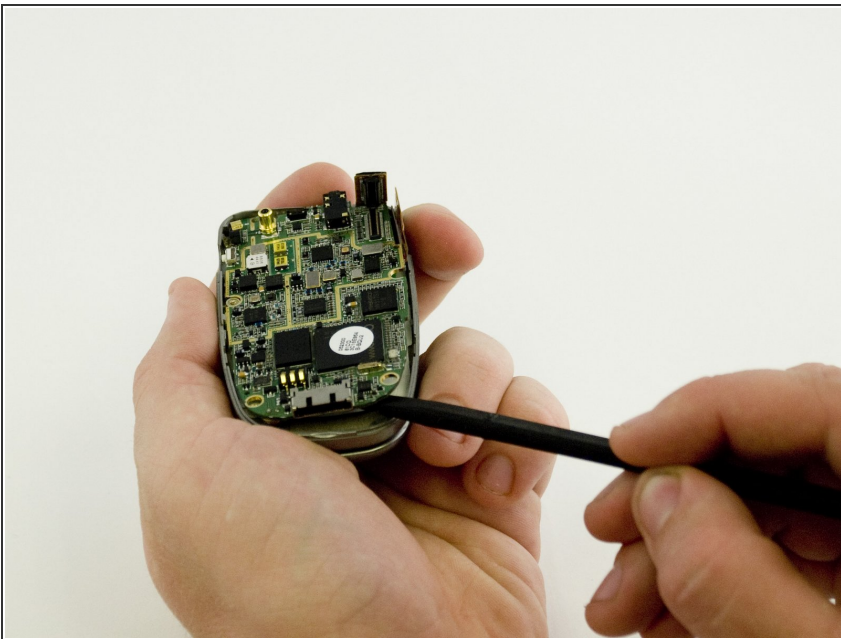
- Using the spudger, carefully pry the case apart starting near the charging port. Ease the case open.
- Then disconnect the small power connector near the top of the phone.

Step 7



- Gently pry up the ribbon-type connector with the spudger.

Step 8



- Carefully pry the logic board from the case with the spudger.

Step 9 — Keypad



- Once the logic board has been removed, peel the keypad up.

Step 10 — Keypad Housing



- When using a spudger the keypad housing comes off quite easily, although it may be necessary to guide the ribbon cable through the slot in the housing.

Step 11 — Screen Casing



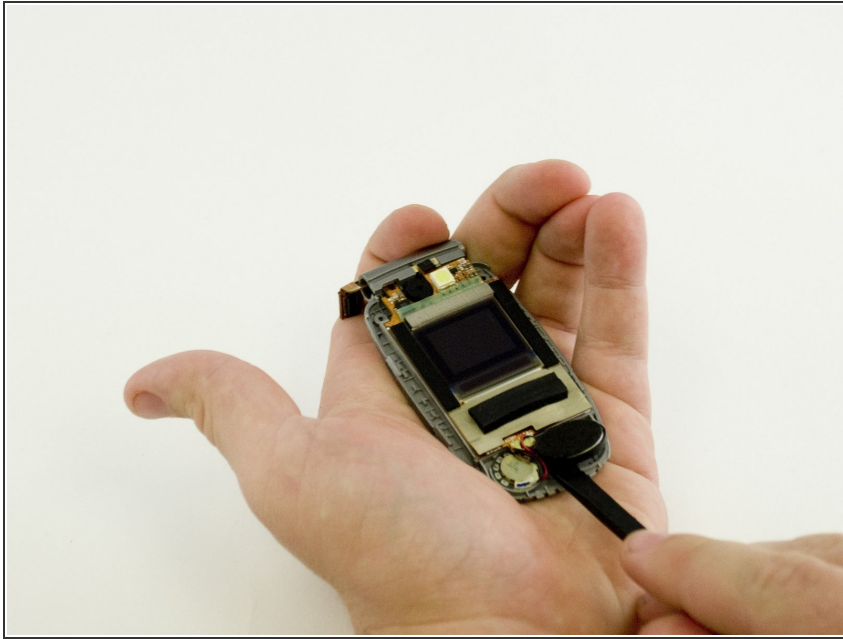
- Remove screws with #0 Phillips screwdriver.

Step 12



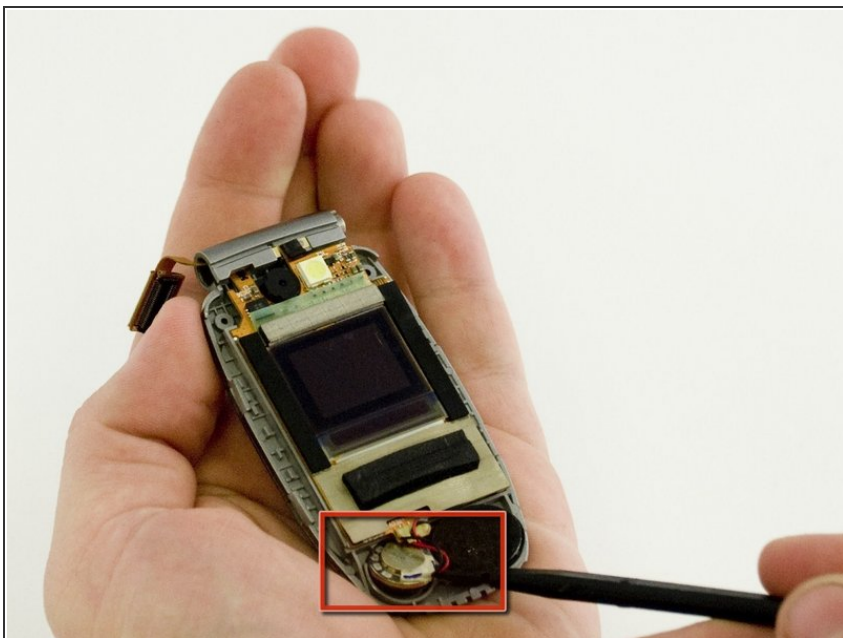
- Carefully pry apart the casing with the spudger tool.

Step 13 — Screen



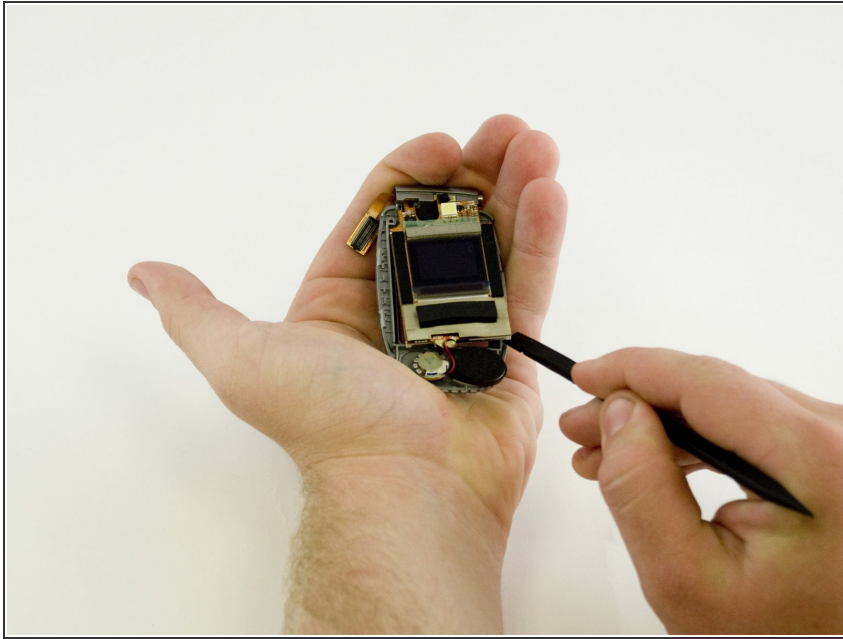
- Use the spudger to carefully pry off the speaker.

Step 14



- Carefully pry off the ringer with the spudger.

Step 15



- Carefully pry off the screen with the spudger.

To reassemble your device, follow these instructions in reverse order.