



# Samsung SCH-A890 Front Screen Replacement

Written By: Casey Burke



---

## INTRODUCTION

This guide will lead you through the steps necessary to gain access to the front display.



### TOOLS:

- [Phillips #00 Screwdriver](#) (1)
-

## Step 1 — Front Screen



- Open the device so that the inside of the phone is facing you.
- Remove the small, gray, circular covers on the bottom left and right corners of the inside face of the phone.

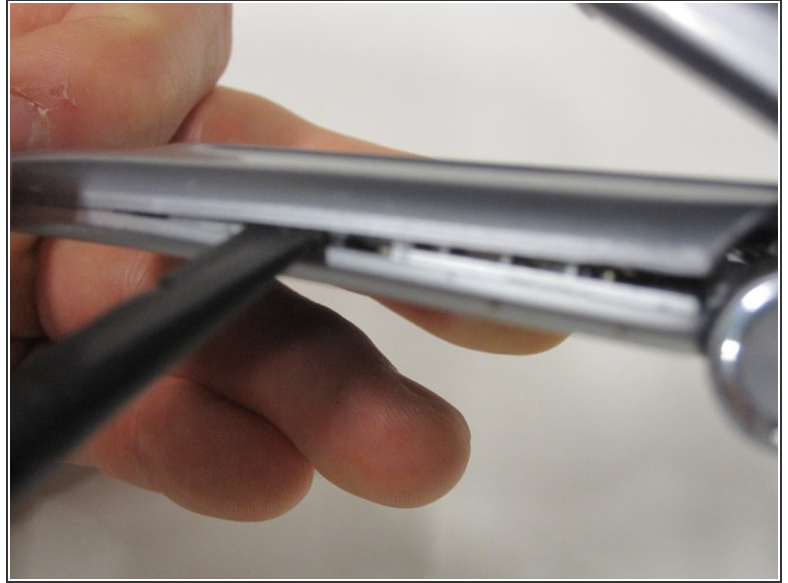
## Step 2



- Use the size 00 screwdriver to remove the two small screws underneath the removed covers.
- ⓘ The screws are slightly magnetic and will want to stay in place. May have to follow the next step and get the cover off, then poke the screws out.

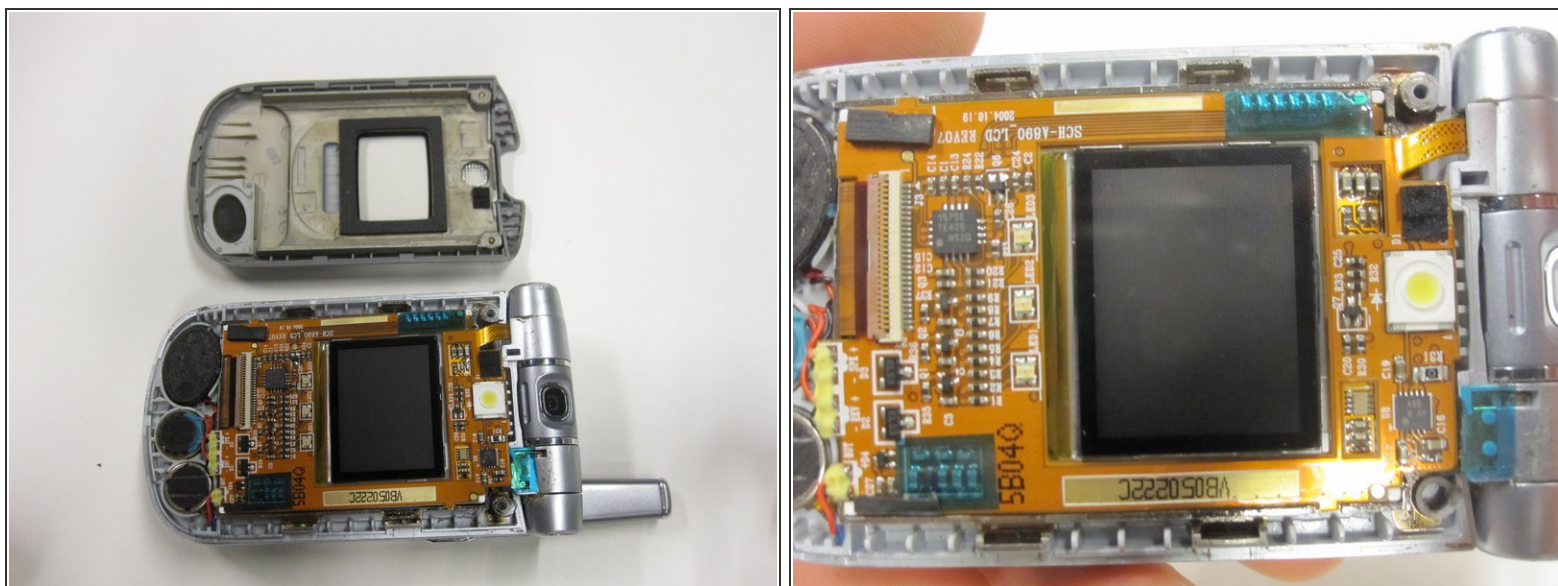


### Step 3



- Insert the spudger between the top and bottom plates to pry the cover off.
- You may need to gently slide the spudger up and down to loosen the cover without snapping it.
- Alternate between sides to loosen the cover more safely and effectively.

## Step 4



- Carefully remove the cover off the device without scratching the display or harming the components.
- ⓘ Work in a dry, dust-free environment to prevent liquid or dust particles from entering the components.

To reassemble your device, follow these instructions in reverse order.