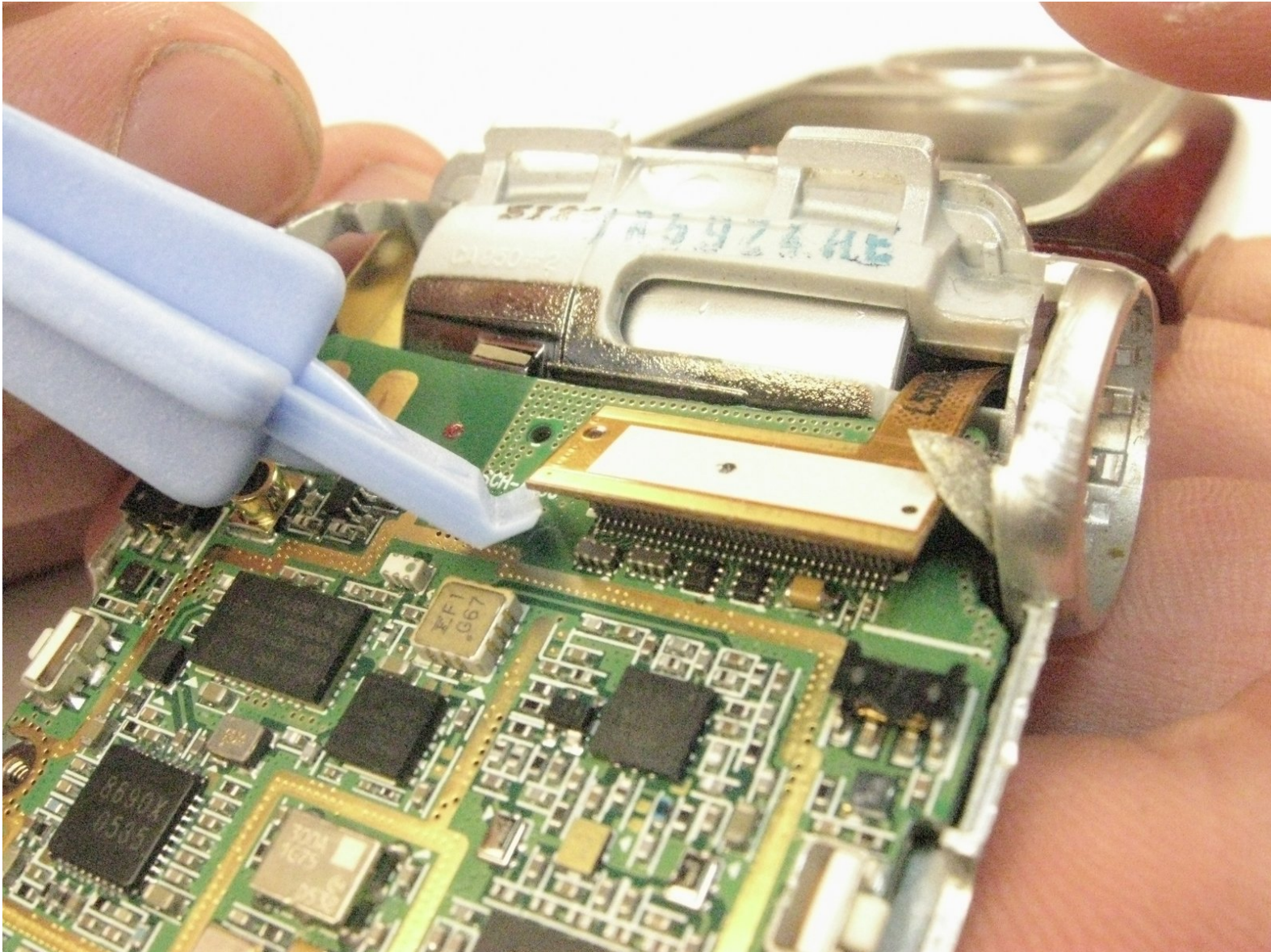




Samsung SCH-A950 Logic Board Replacement

Written By: Alan Cook



INTRODUCTION

This guide will teach you how to remove your Samsung SCH-A950's logic board.



TOOLS:

- [Phillips #00 Screwdriver](#) (1)
 - [Tweezers](#) (1)
 - [iFixit Opening Tools](#) (1)
-

Step 1 — Battery



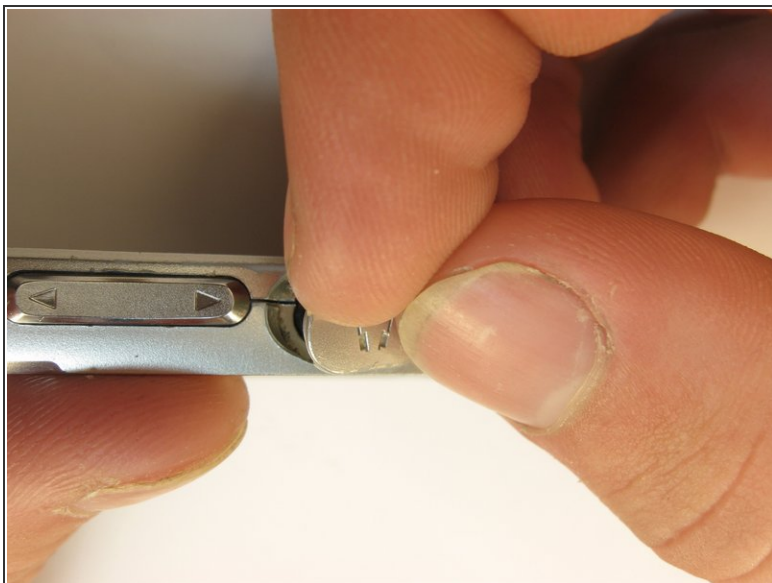
- Slide the the battery release tab upwards while simultaneously lifting the back cover straight up.

Step 2 — Volume and Camera Buttons



- Remove the four Phillips #00 screws underneath the battery.

Step 3



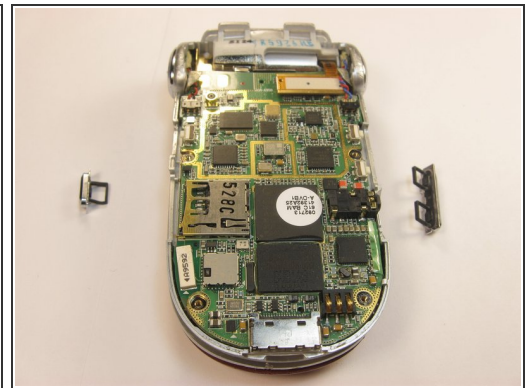
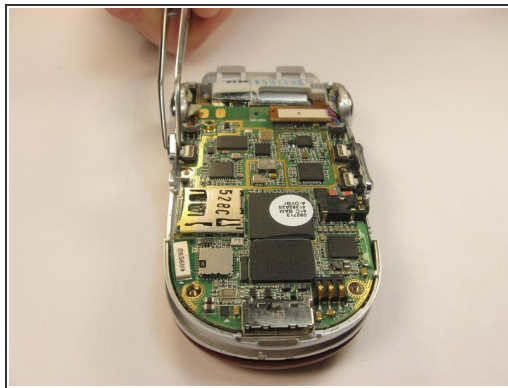
- Pull open the earphone tab and the Trans Flash tab using your fingers.

Step 4




- Using a plastic opening tool, pry off the phone casing near the speakers as shown. Tabs located on the inside of the phone may make this difficult and some force may be required.
- Slide the casing slightly forward towards the top of the phone to remove.

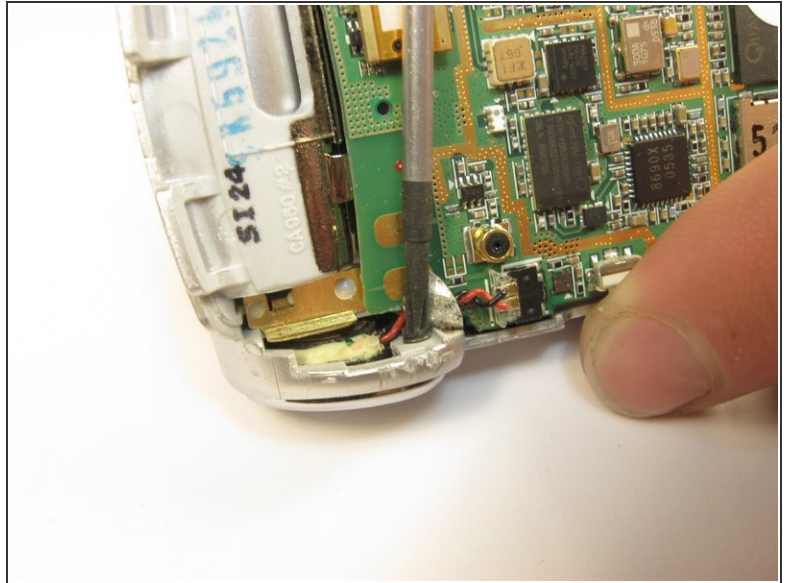
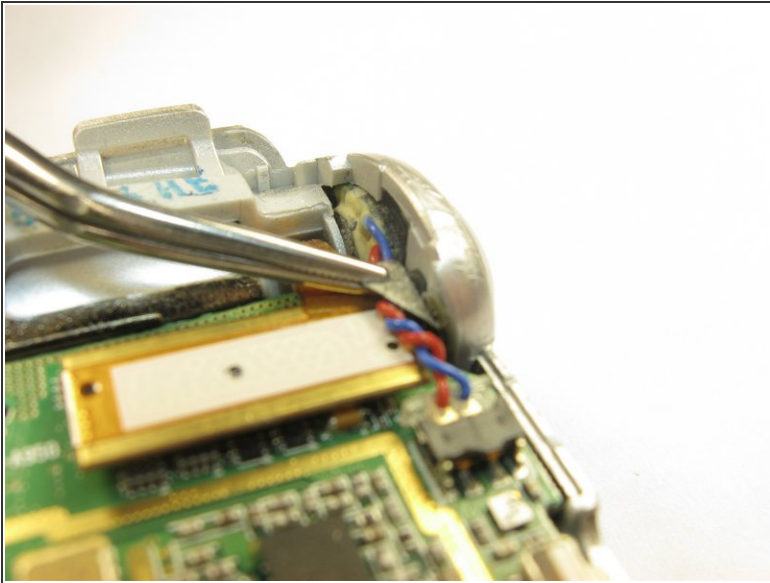
Step 5



- Using tweezers or your fingers, lift off buttons from logic board.

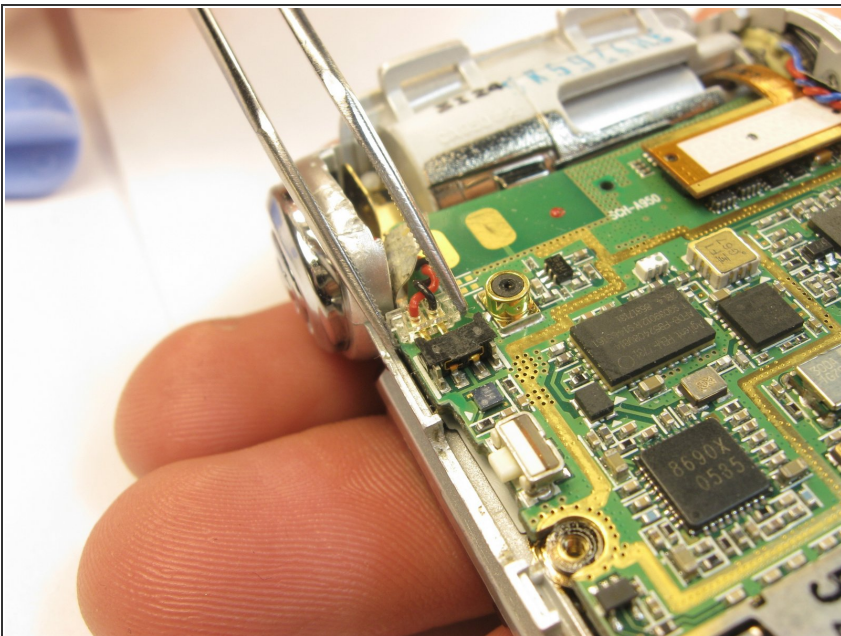
 The buttons can be replaced if needed.

Step 6 — Speakers



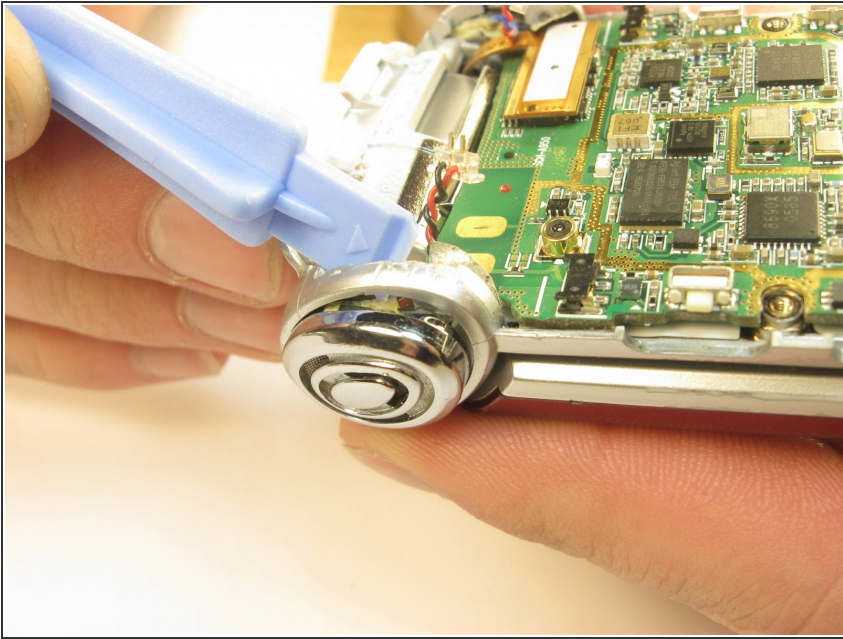
- Use tweezers to peel back the sticker on the backside of the speaker to reveal a screw that holds the speaker in place.
- Using a phillips #00 screwdriver, remove the screw holding the speaker. On each side.

Step 7



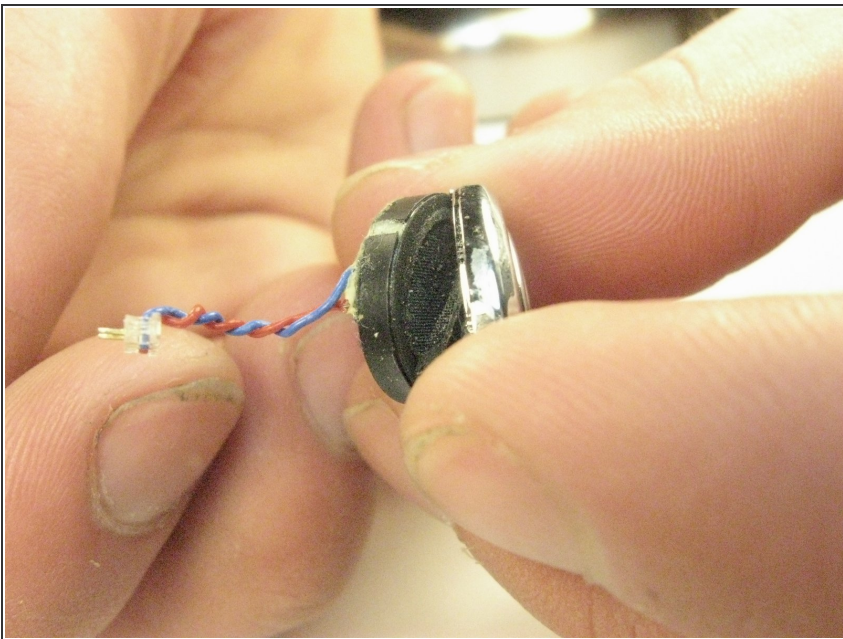
- Using the tweezers, grasp the plastic connector that connects the speaker to the logic board and pull the connector off of the logic board.

Step 8



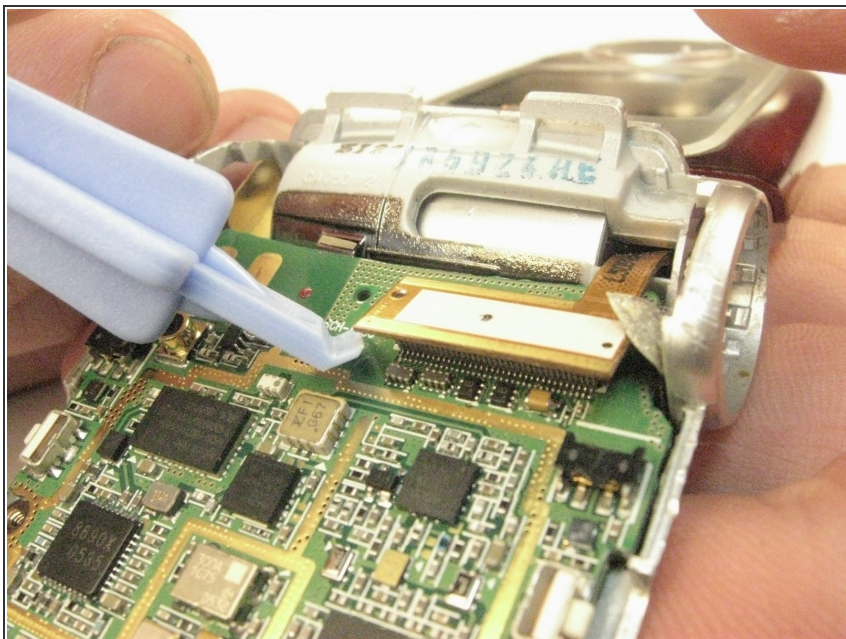
- Push the speaker out of the phone using the spudger.

Step 9



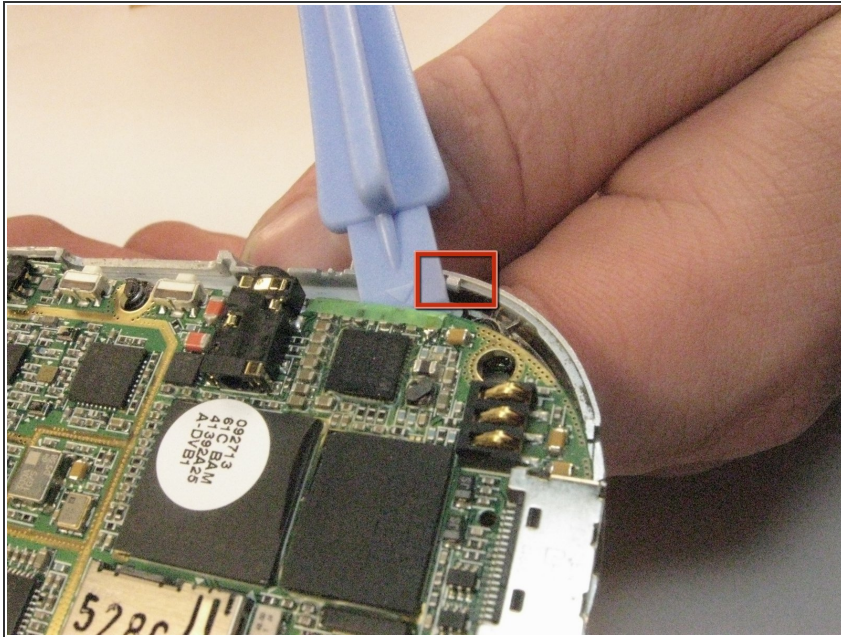
- Remove the speaker from the decorative housing by pulling on the wires.
- The speaker can be replaced if needed.

Step 10 — Logic Board



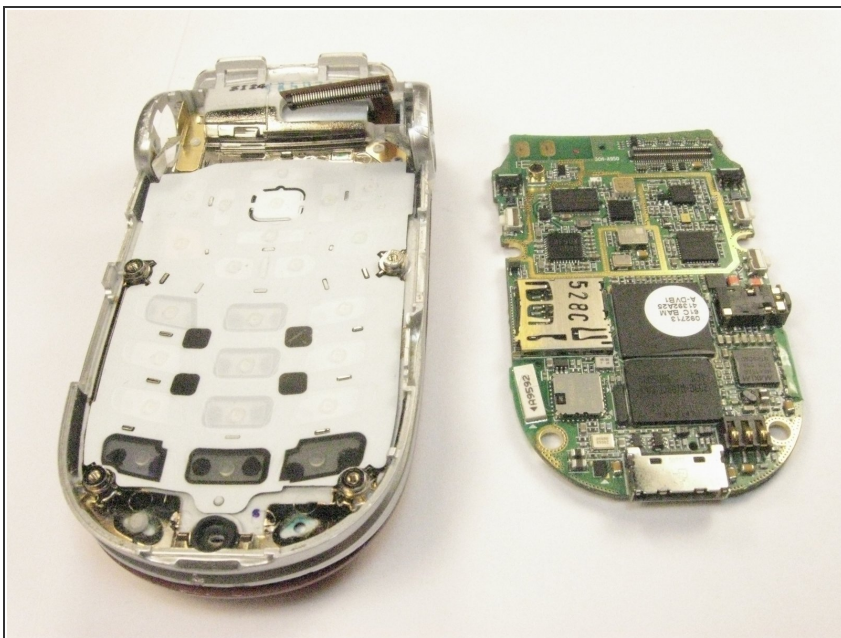
- Using a plastic opening tool, disconnect the display cable from the motherboard.

Step 11



- Use a plastic opening tool to pry the motherboard away from the phone housing at the tabs on both sides of the phone at the pictured location. Some force may be required.

Step 12



- The logic board will pop out.
- The logic board can be replaced if needed.

To reassemble your device, follow these instructions in reverse order.