



# Samsung SCH-R355C Keyboard Replacement

Replace the keyboard of your Samsung SCH-R355C.

Written By: Lorena Valdes



---

## INTRODUCTION

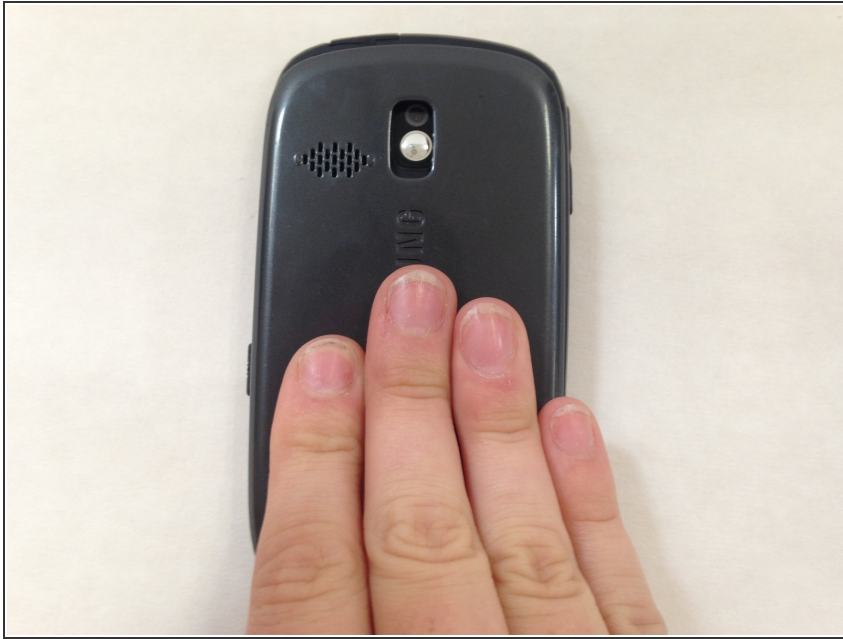
This guide will teach you how to pull apart the Samsung SCH-R355C and replace the keyboard membrane.

---

### TOOLS:

- [Phillips #00 Screwdriver](#) (1)
-

## Step 1 — Keyboard



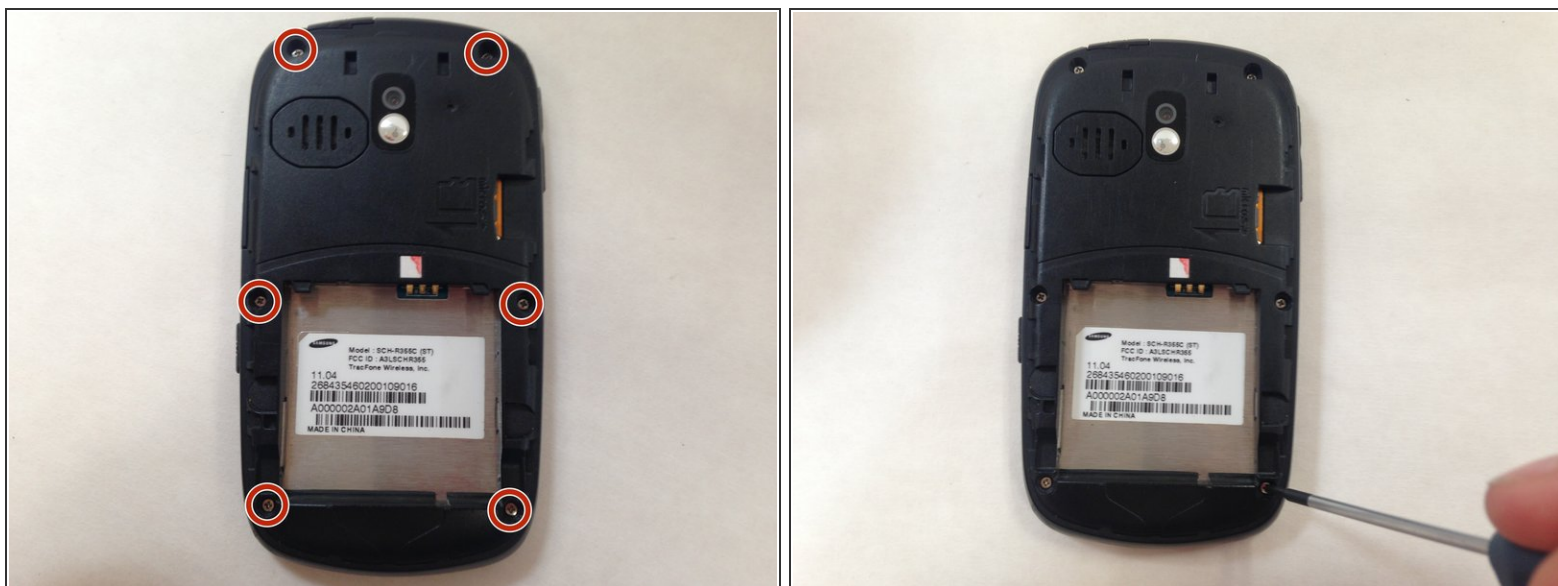
- Pull down on the back of the phone to pull it off.

## Step 2



- Remove the battery from the phone.

## Step 3



- Use a small #00 Phillips-head screwdriver to unscrew all 6 of the 4 mm back screws.

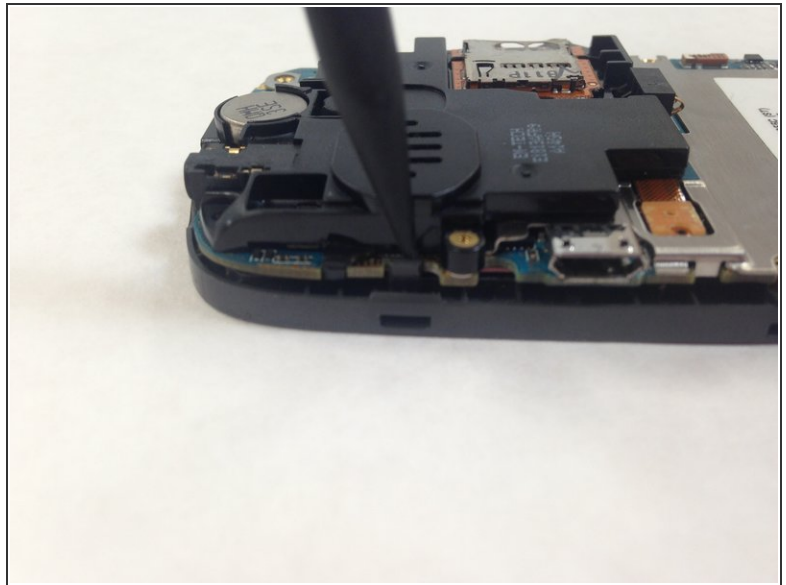
## Step 4



- Push down on the silver part of the phone where the battery used to be located. Hold the back of the case to catch it as it comes off.



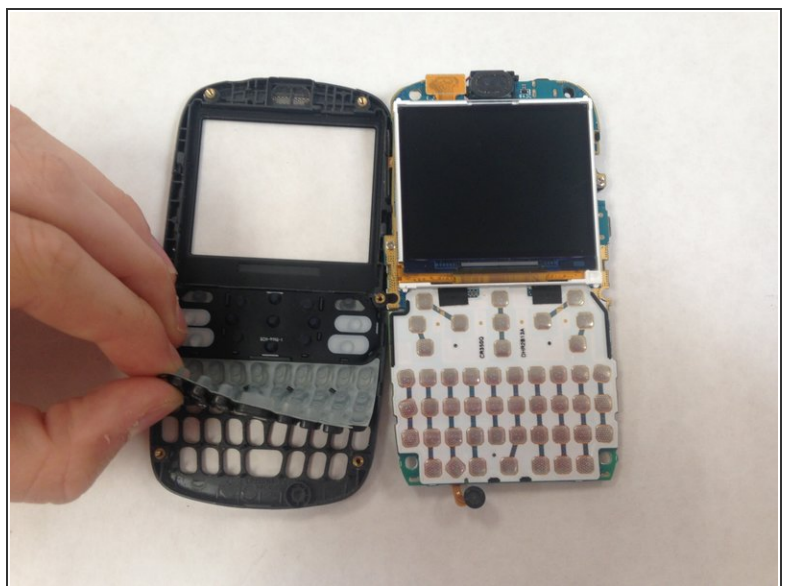
## Step 5



- Pry away the friction holder on the top left-hand side of the motherboard. This will release the motherboard.

⚠ Don't rip the cord attaching the motherboard to the case when you lift the motherboard up. This will render the phone unusable.

## Step 6



- Lift the keyboard membrane from the bottom and replace it.

To reassemble your device, follow these instructions in reverse order.