



Samsung SCH-U340 Logic Board Assembly Replacement

Written By: Mitchell Walker



INTRODUCTION

Use this guide to remove the logic board assembly from the casing.



TOOLS:

- [Phillips #0 Screwdriver](#) (1)
-

Step 1 — Battery



- Turn the cell phone so that the back side is facing you. Press the upper indent and slide the back cover down.

Step 2



- Pull battery up from indent at the bottom and slide it out.

Step 3



- Set the battery aside.

Step 4 — Top Casing



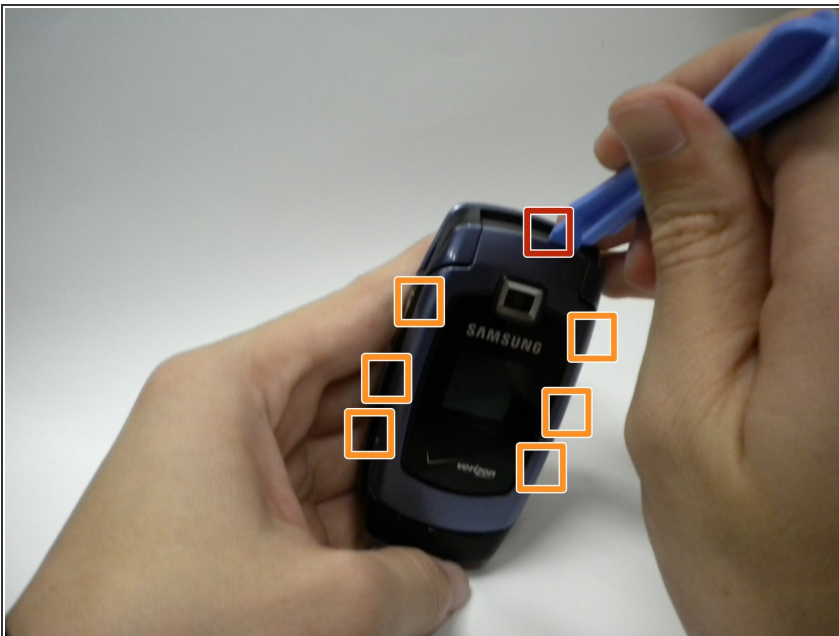
- The outer casing consists of two separate parts on the upper and lower halves of the device. The upper outer casing is held on through a combination of screws and tabs. First remove the plastic plugs covering the screws with a spudger.

Step 5



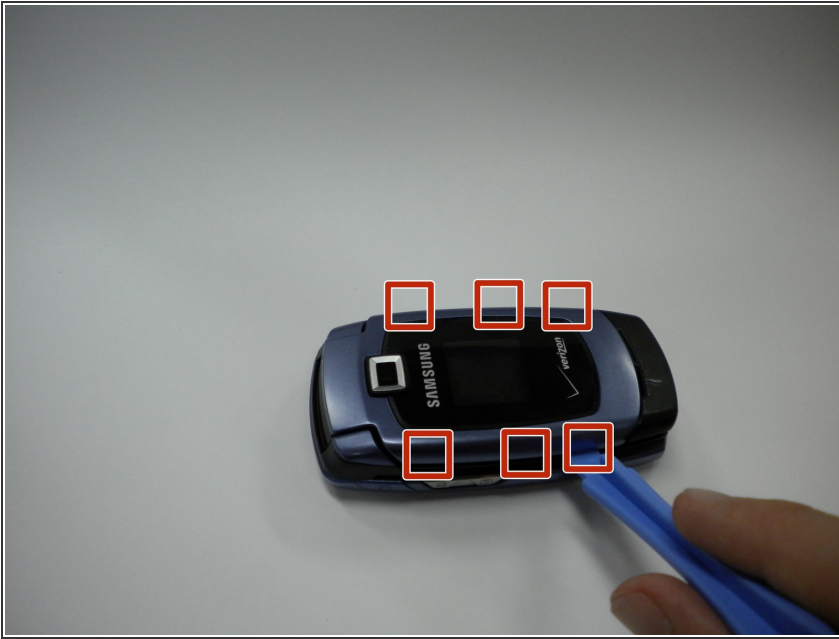
- Underneath the plugs are two small screws that can be removed with a small Phillips screwdriver. They will need to be pried out after unscrewing them due to their size. Take care not to lose the screws as they are small and have a tendency to roll.

Step 6



- The outer cover is now secured with seven tabs: one large tab (marked in red) and seven smaller tabs (marked in orange).
- To begin removing the outer cover start by prying the large tab up with a flat object.

Step 7



- Continue to pry each tab up, taking care not to break the tabs.

⚠ If disaster strikes and a tab is broken, the outer casing can still be put back on assuming the majority of the tabs are still intact.

Step 8



- After the last tab is removed, tug gently on the outer casing to remove it. Don't pull too hard, or you may damage the wires connected to the speaker.

Step 9 — Lower Casing



- The lower casing is held on by four screws in the corner of the battery enclosure. Remove these screws.

Step 10



- Use a spudger to pry the back assembly off of the device.

Step 11 — Logic Board Assembly



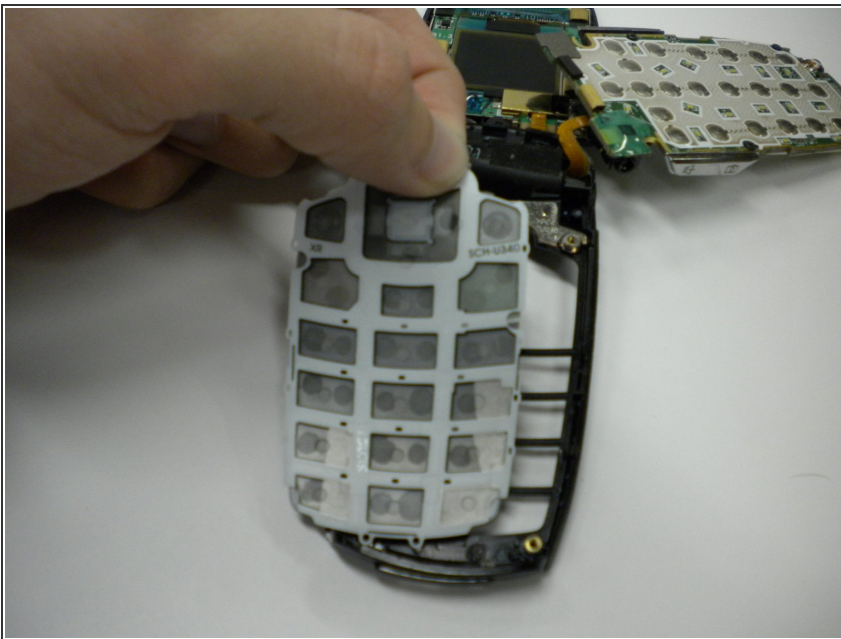
- Use spudger to pry logic board from the casing.

Step 12



- Rotate the logic board assembly out of the casing, being careful not to break VGA cable.

Step 13



- Lift the number pad straight up from the casing.

Step 14



- Set the number pad to the side.