



# Samsung SCH-U340 Top Casing Replacement

Written By: Anish Sambamurthy



---

## INTRODUCTION

This guide will cover the removal of the Samsung SCH-U340 top casing.



### TOOLS:

- [Phillips #00 Screwdriver](#) (1)
-

## Step 1 — Battery



- Turn the cell phone so that the back side is facing you. Press the upper indent and slide the back cover down.

## Step 2



- Pull battery up from indent at the bottom and slide it out.

## Step 3



- Set the battery aside.

## Step 4 — Top Casing



- The outer casing consists of two separate parts on the upper and lower halves of the device. The upper outer casing is held on through a combination of screws and tabs. First remove the plastic plugs covering the screws with a spudger.

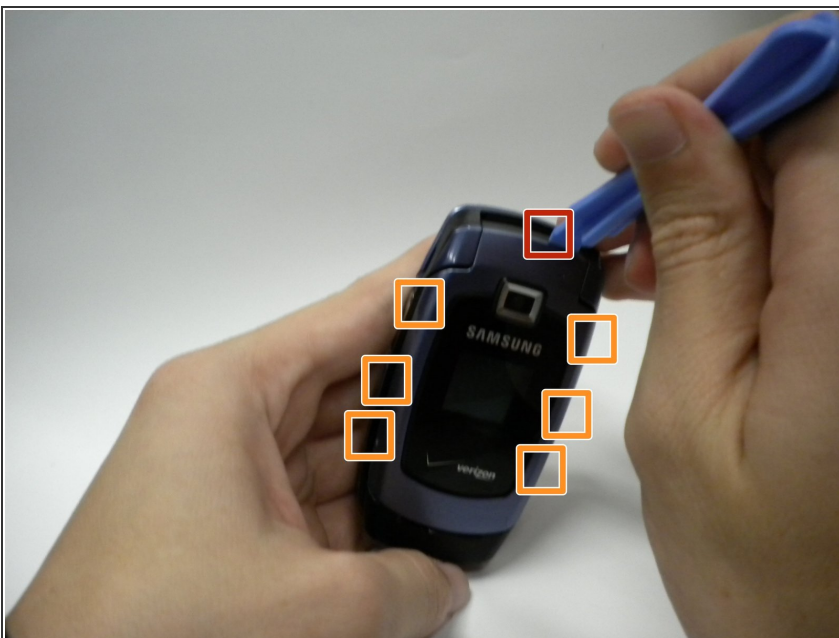


## Step 5



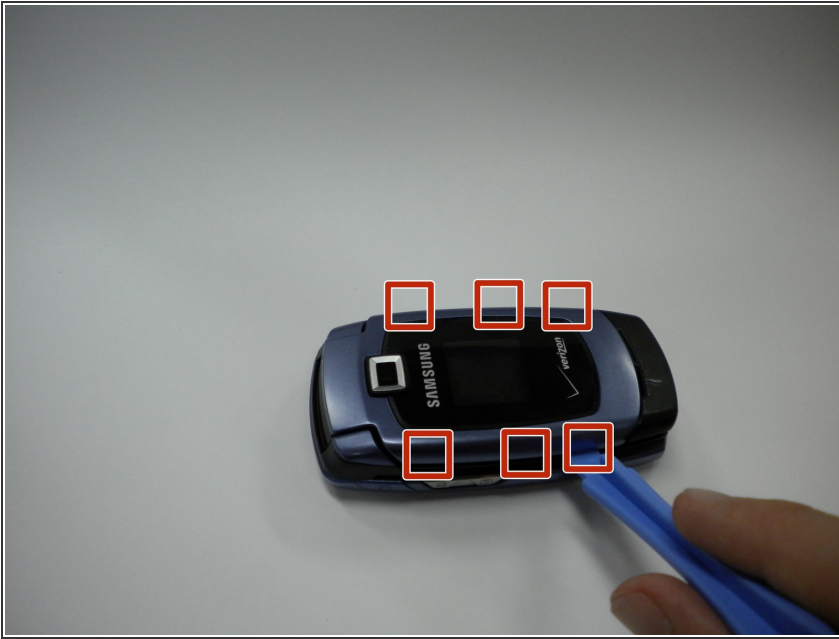
- Underneath the plugs are two small screws that can be removed with a small Phillips screwdriver. They will need to be pried out after unscrewing them due to their size. Take care not to lose the screws as they are small and have a tendency to roll.

## Step 6



- The outer cover is now secured with seven tabs: one large tab (marked in red) and seven smaller tabs (marked in orange).
- To begin removing the outer cover start by prying the large tab up with a flat object.

## Step 7



- Continue to pry each tab up, taking care not to break the tabs.

⚠ If disaster strikes and a tab is broken, the outer casing can still be put back on assuming the majority of the tabs are still intact.

## Step 8



- After the last tab is removed, tug gently on the outer casing to remove it. Don't pull too hard, or you may damage the wires connected to the speaker.

To reassemble your device, follow these instructions in reverse order.