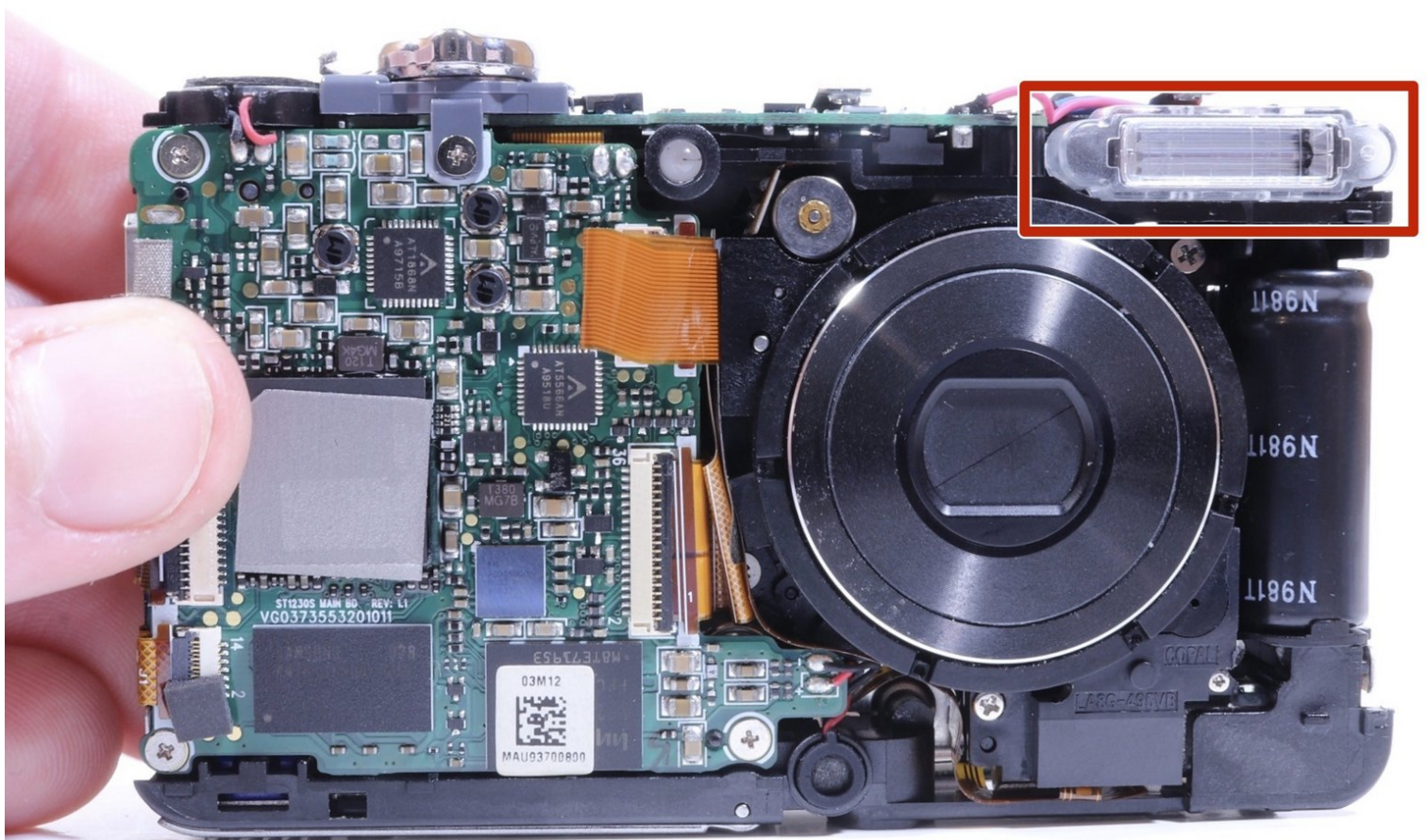




# Samsung SCV-VLUUST50 Flash Bulb Replacement

This guide will show you how to replace a faulty flash light on the Samsung SCV-VLUU ST50.

Written By: Jade Withrow



## INTRODUCTION

The replacement of this flash light bulb will be needed when flash mode isn't working.



### TOOLS:

- [Phillips #00 Screwdriver](#) (1)
  - [Magnetic Project Mat](#) (1)
  - [Solder](#) (1)
  - [Portable Soldering Iron](#) (1)
  - [Flush Wire Cutters](#) (1)
  - [Phillips #000 Screwdriver](#) (1)
-

## Step 1 — Cover



- Unscrew all visible screws indicated by red circles with a #00 Phillips driver.
- Slide memory card cover and unscrew hidden screw underneath with a #00 Phillips driver.

## Step 2



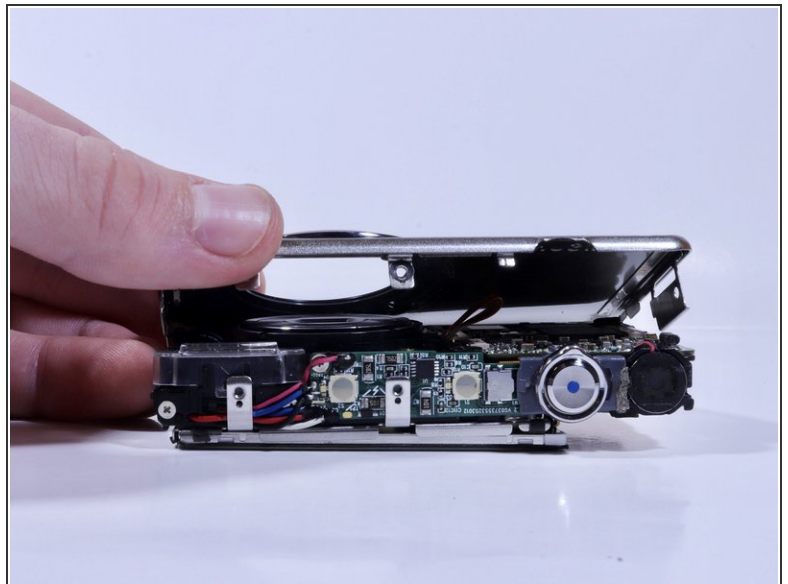
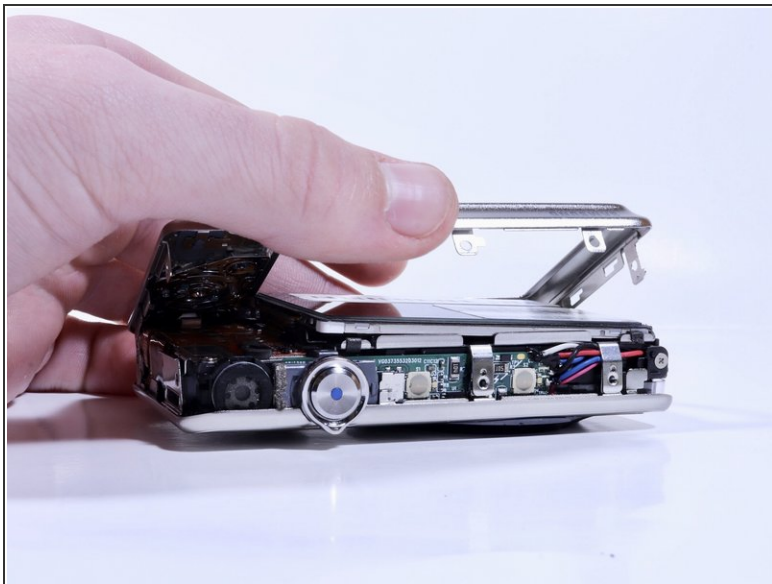
- Remove the flat side panel by applying gentle pressure toward the bottom of the camera.
- Remove the corner panel by applying pressure away from the shutter button.
- ⓘ The memory card cover will come off with the corner panel.
- Remove the top panel by applying gentle pressure away from the shutter button.

### Step 3



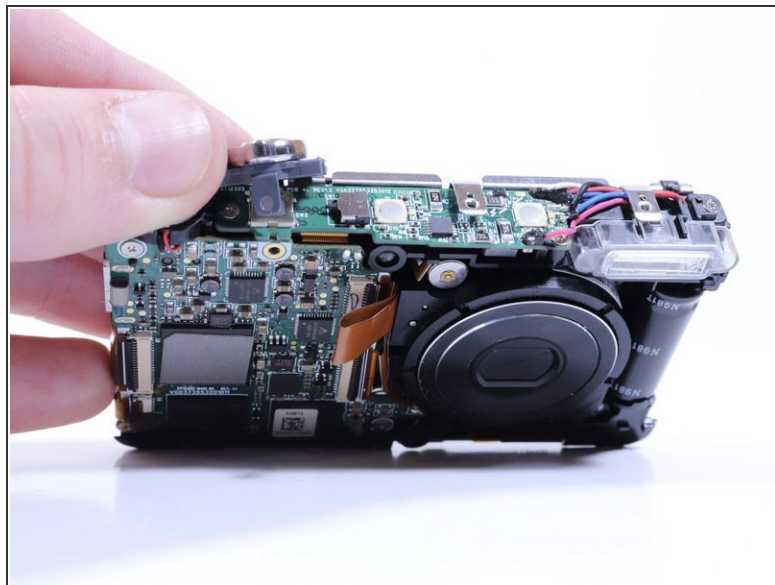
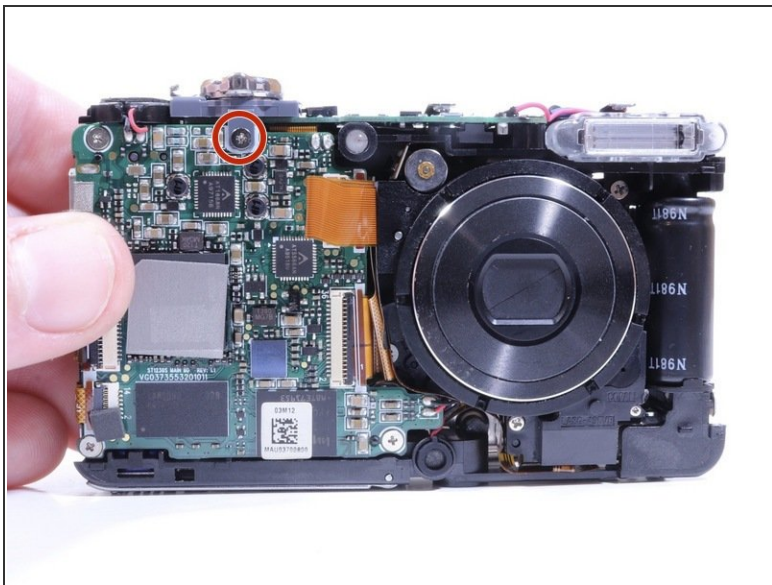
- Remove screws beneath the top panel indicated by red circles with a #00 Phillips driver.

### Step 4



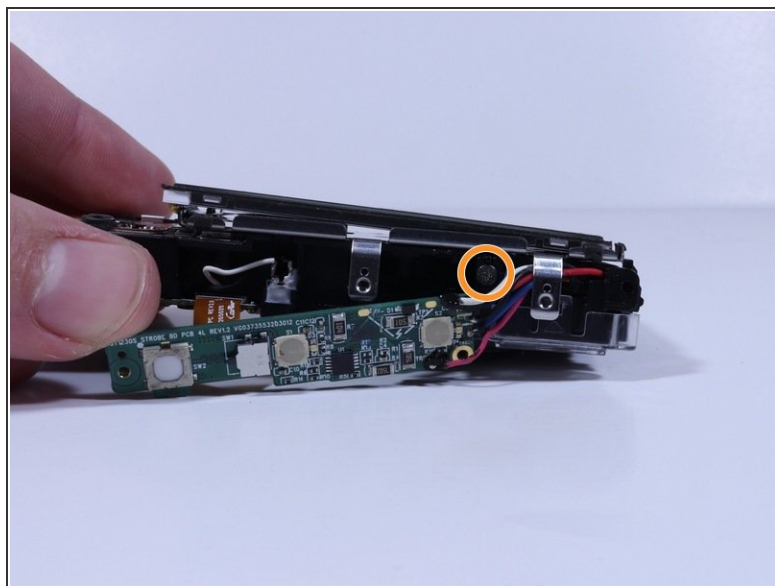
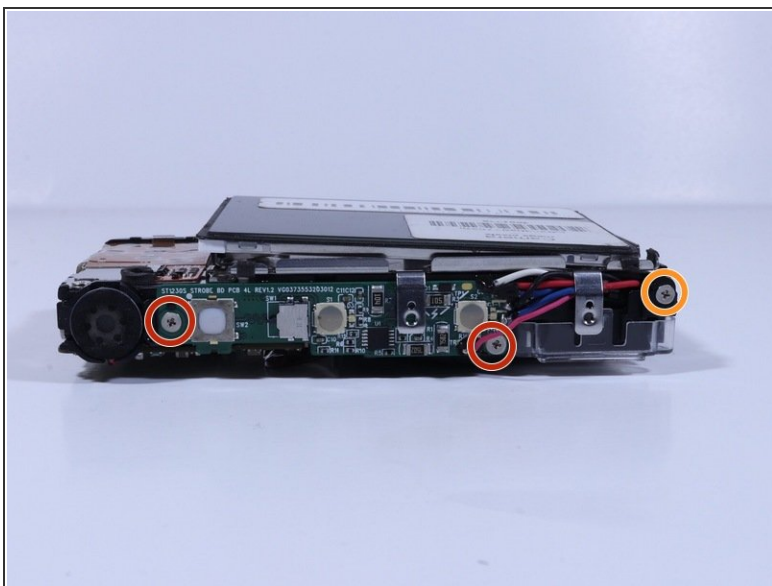
- Remove the front and back covers by pulling them straight apart.

## Step 5 — Flash Bulb



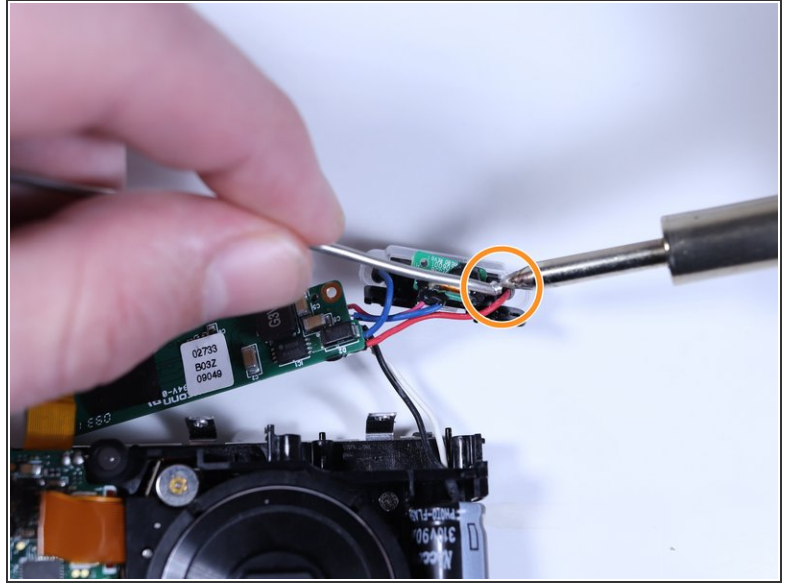
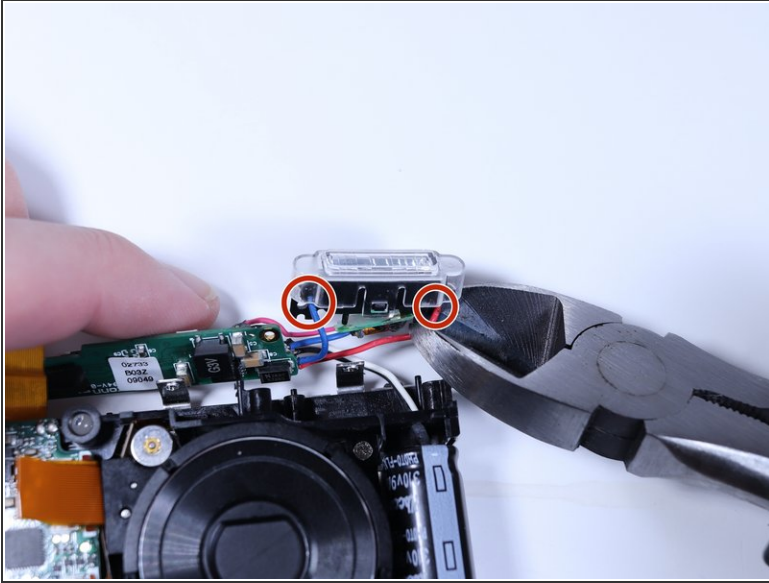
- Remove the screw securing the shutter button to the camera frame.
- Lift the shutter button to remove it.

## Step 6



- Remove the screws from the circuitry with a Phillips #000 driver.
- Remove the screw connecting the flash housing to the camera frame with the same driver.

## Step 7



- Pull the flash housing away from the camera frame.
- Cut the wires connecting the flash module to the circuitry.
- Connect the new flash module to the circuitry with a soldering iron and electrical solder.

To reassemble your device, follow these instructions in reverse order.