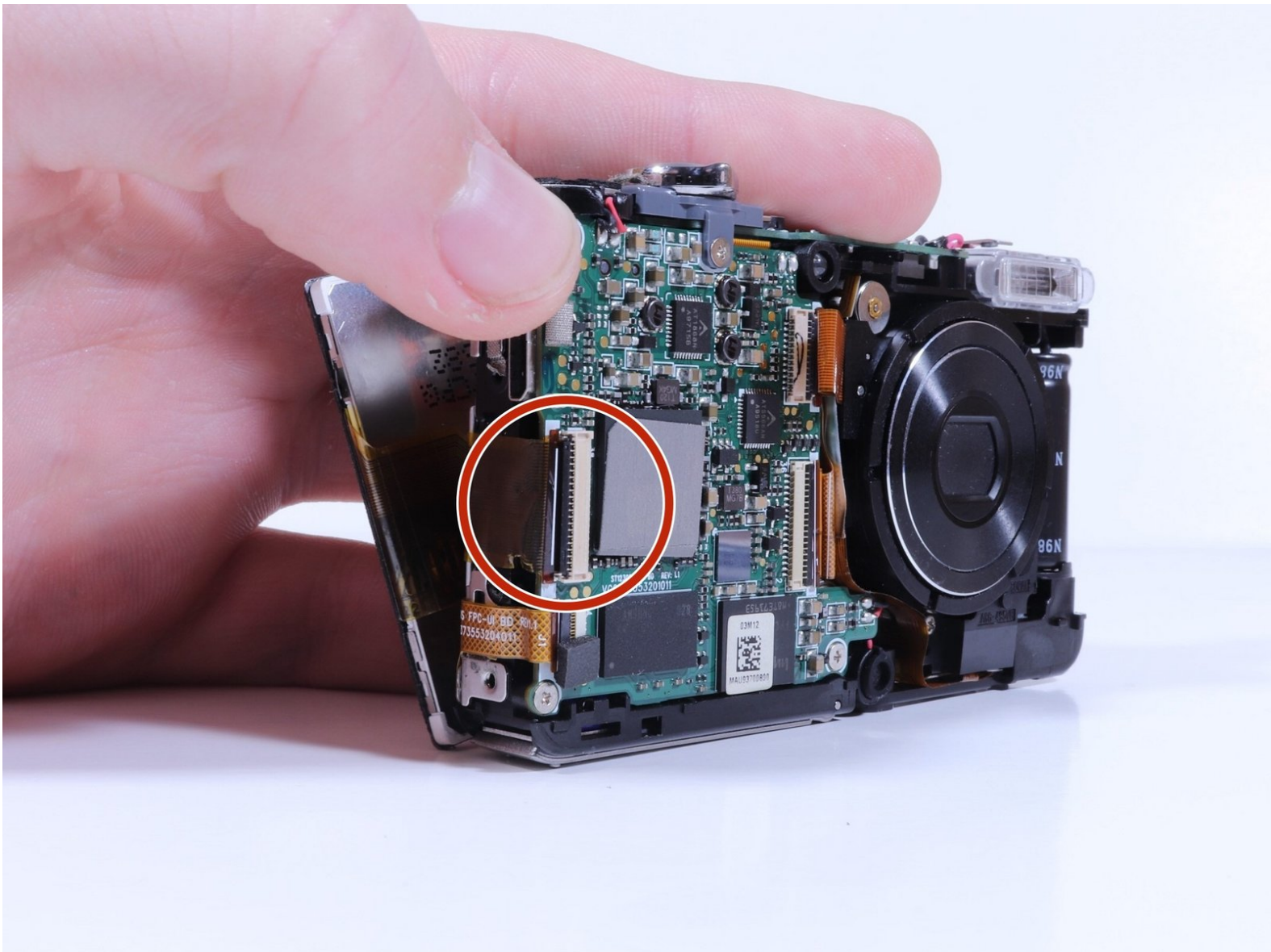




Samsung SCV-VLUUST50 Screen Replacement

This is a guide to replace the screen.

Written By: Evert Jordan



INTRODUCTION

Is your screen broken or faulty? This guide will help you replace it.



TOOLS:

- [Phillips #00 Screwdriver](#) (1)
 - [Magnetic Project Mat](#) (1)
-

Step 1 — Cover



- Unscrew all visible screws indicated by red circles with a #00 Phillips driver.
- Slide memory card cover and unscrew hidden screw underneath with a #00 Phillips driver.

Step 2



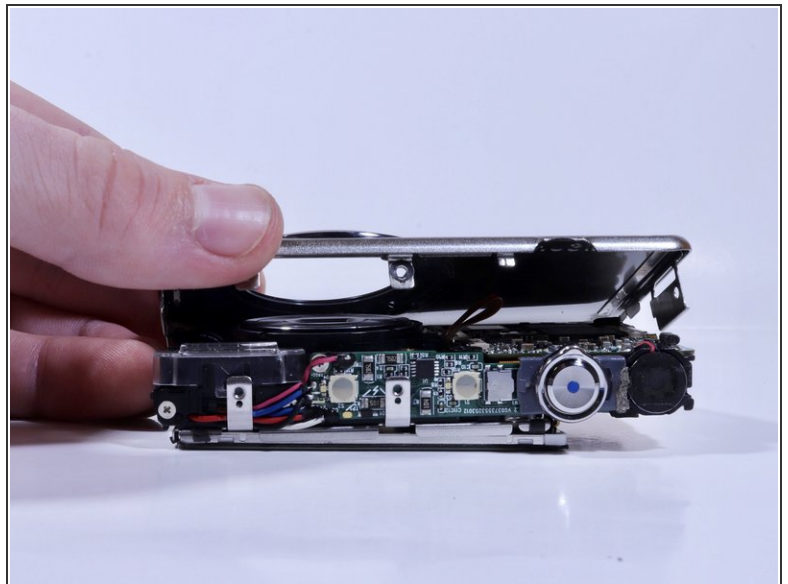
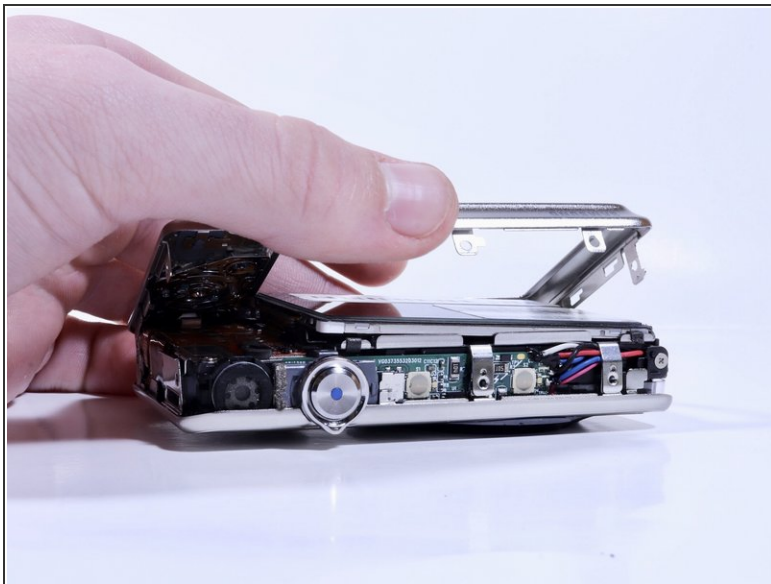
- Remove the flat side panel by applying gentle pressure toward the bottom of the camera.
- Remove the corner panel by applying pressure away from the shutter button.
- ⓘ The memory card cover will come off with the corner panel.
- Remove the top panel by applying gentle pressure away from the shutter button.

Step 3



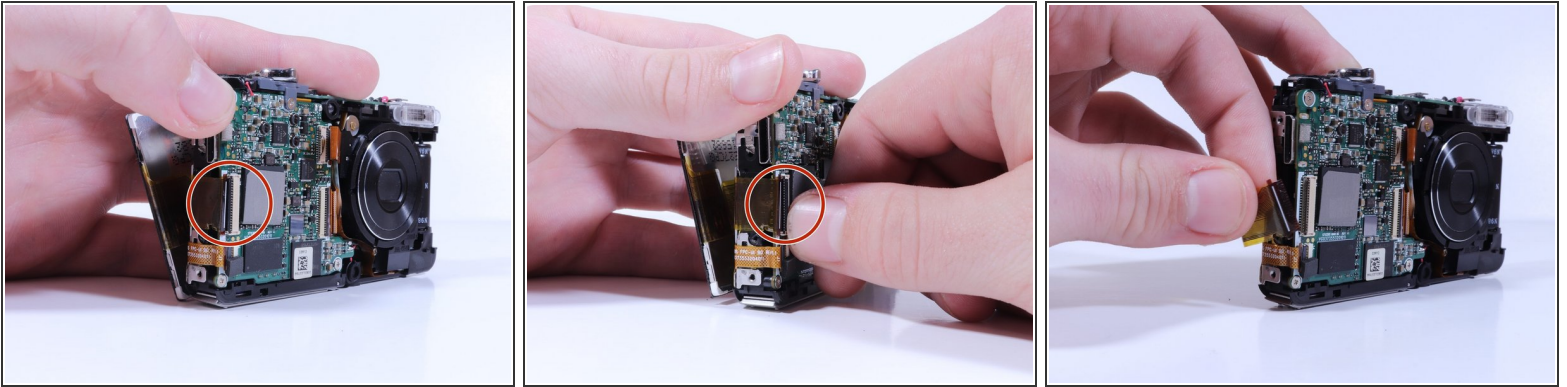
- Remove screws beneath the top panel indicated by red circles with a #00 Phillips driver.

Step 4



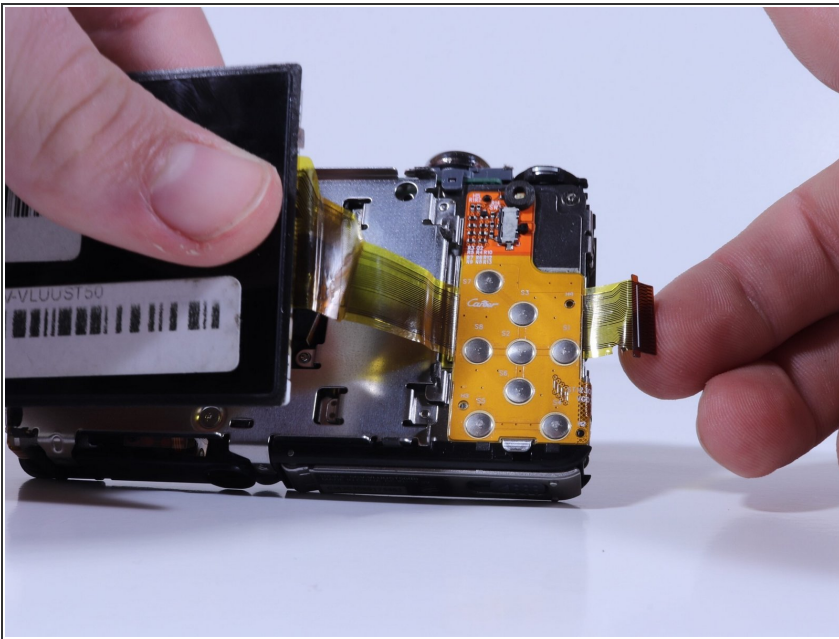
- Remove the front and back covers by pulling them straight apart.

Step 5 — Screen



- Open the ribbon connector with your fingernail.
- Pull the ribbon out of the connection.

Step 6



- Pull the ribbon connected to the screen out from behind the button circuitry on the rear of the camera.
- Feed the new screen's ribbon through the same slot it came out of.

To reassemble your device, follow these instructions in reverse order.