



Samsung SCV-VLUUST50 Shutter Button Replacement

This is a guide to replace the shutter button.

Written By: Jaeda Ransom



INTRODUCTION

Is your shutter button not working correctly? Here is a replacement guide for the Samsung SCV-VLUUST50 shutter button. You will need a driver kit and a spudger to complete this replacement.

TOOLS:

- [Phillips #00 Screwdriver](#) (1)
 - [Magnetic Project Mat](#) (1)
-

Step 1 — Cover



- Unscrew all visible screws indicated by red circles with a #00 Phillips driver.
- Slide memory card cover and unscrew hidden screw underneath with a #00 Phillips driver.

Step 2



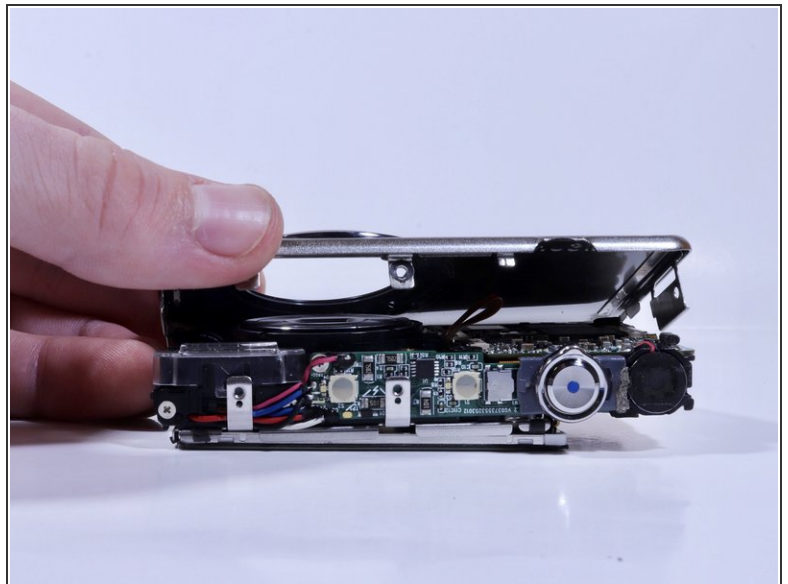
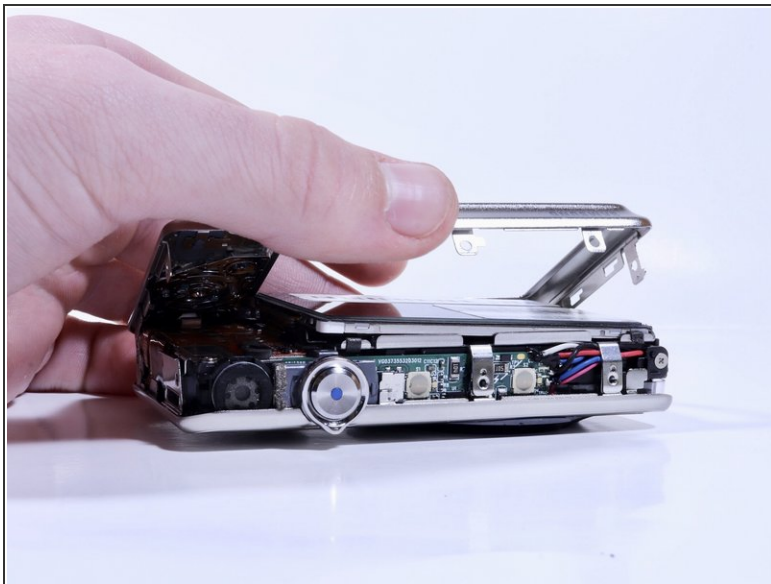
- Remove the flat side panel by applying gentle pressure toward the bottom of the camera.
- Remove the corner panel by applying pressure away from the shutter button.
- ⓘ The memory card cover will come off with the corner panel.
- Remove the top panel by applying gentle pressure away from the shutter button.

Step 3



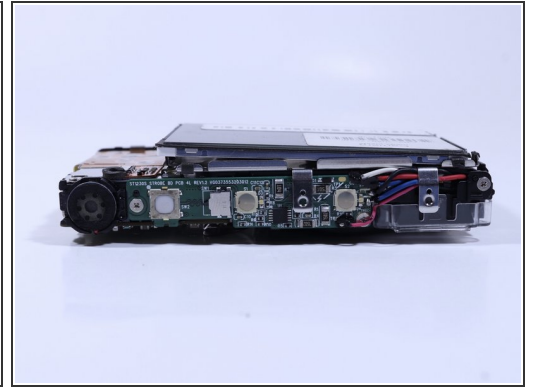
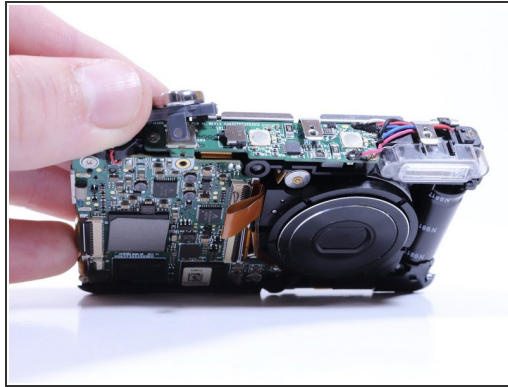
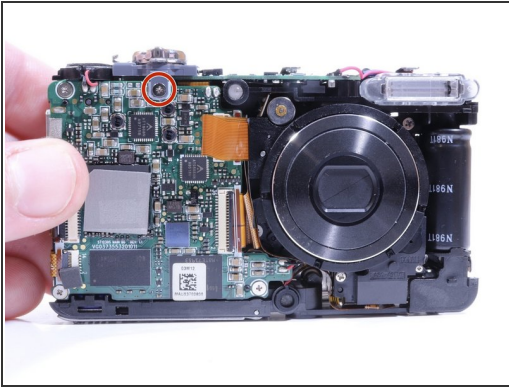
- Remove screws beneath the top panel indicated by red circles with a #00 Phillips driver.

Step 4



- Remove the front and back covers by pulling them straight apart.

Step 5 — Shutter Button



- Remove the screw below the shutter button with a Phillips #000 screw driver.
- ⓘ Once the screw is removed the shutter button should easily come off, and you can replace it with the new button.

To reassemble your device, follow these instructions in reverse order.