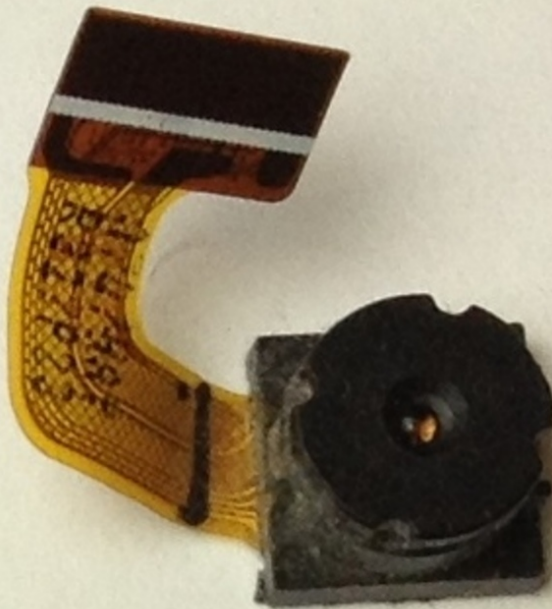




Samsung SGH A707 Camera Replacement

Replace a camera on your Samsung SGH A707 phone.

Written By: yfm



INTRODUCTION

Use this guide to replace your Samsung SGH A707 phone's camera.

TOOLS:

- [Tweezers](#) (1)
 - [Phillips #0 Screwdriver](#) (1)
 - [iFixit Opening Tools](#) (1)
-

Step 1 — Battery



- Press on the markings on the cover and pull it down to reveal the battery.

Step 2



- Use your fingers to pull the battery out of its position. You may also flip the phone and the battery will fall out.

Step 3



- Here is the phone without the battery.

Step 4 — Logic Board



- Unscrew the six screws on the back of the phone using the Phillips #0 screw driver.

Step 5



- Use the prying tool to pry off the phone's plastic frame.

Step 6



- Use the prying tool to disconnect the rectangular connector.

Step 7



- Use the prying tool to disconnect the small connector.

Step 8



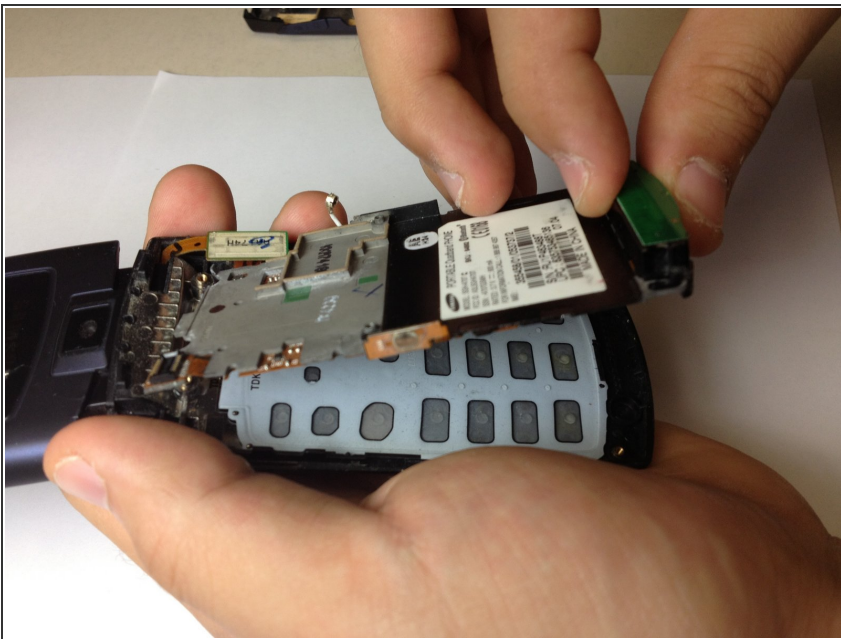
- Gently pull off the circuit board.

Step 9



- Here is the phone without the logic board.

Step 10 — Keypad



- Hold the phone and gently separate the circuit board that holds the dome switches and the front face of the

phone, revealing the rubber keyboard.

Step 11



- Here is the phone without the dome switch circuit board.

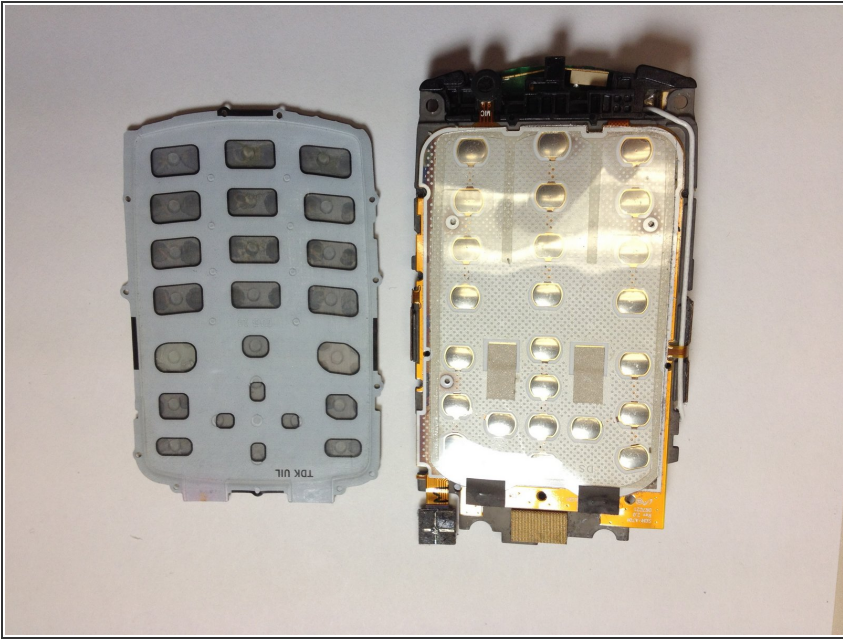
Step 12



- Here is the phone and the rubber keyboard.

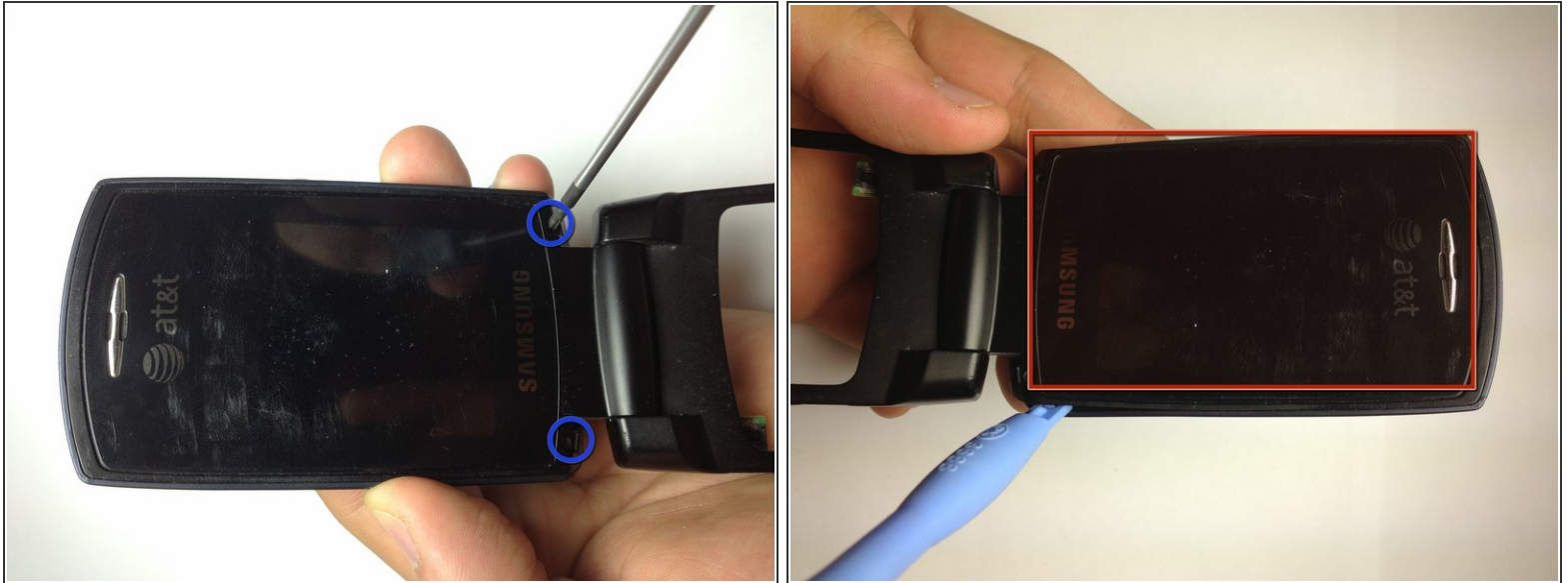


Step 13



- Here is the rubber keyboard and the dome switch circuit board. A quick inspection of these elements can reveal keypad malfunctions. Look for dirt or debris that do not belong there.

Step 14 — Front Pane



- Use the Phillips #0 screw driver to remove the two screws.
- Place the screws in a safe place.
- Use the prying tool to gently pry the screen off, by slowly moving the prying tool around the entire edge of the screen (roughly highlighted with a red rectangle). You must be very gentle, otherwise the screen will crack.

Step 15



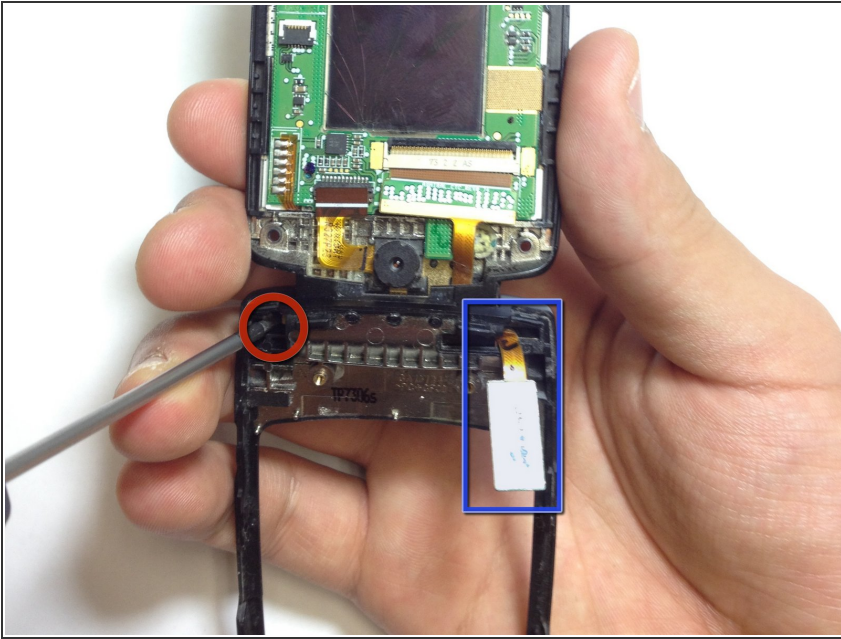
- Now we have access to the camera.
- We also have access to the speakers.
- Disconnect the flat cable to separate the two pieces.

Step 16



- Samsung SGH A707

Step 17 — Camera



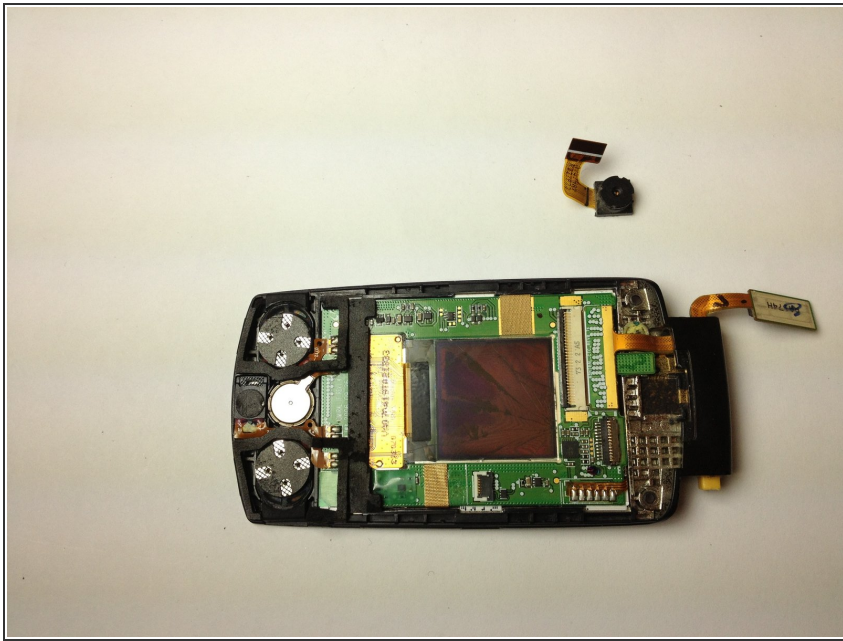
- Separate the two flaps to make handling easier.
- Use a screw driver to press a latch in along the axis of the hinge and simultaneously pull the pieces apart.
- Gently pull the flat cable through the hinge.

Step 18



- Disconnect the flat cable for the camera from the circuit board.
- Use the prying tool to remove the camera. It is secured in place by glue, so some force is needed.
- Be careful not to slip the tool onto your hand as you apply force.

Step 19



- Here is the camera removed from the rest of the phone.

To reassemble your device, follow these instructions in reverse order.