



# Samsung SGH A707 Display Replacement

Replace a display on your Samsung SGH A707 phone.

Written By: yfm



# INTRODUCTION

Use this guide to replace your Samsung SGH A707 phone's display.



## TOOLS:

- [Tweezers](#) (1)
  - [Phillips #00 Screwdriver](#) (1)
  - [iFixit Opening Tools](#) (1)
-

## Step 1 — Battery



- Press on the markings on the cover and pull it down to reveal the battery.

## Step 2



- Use your fingers to pull the battery out of its position. You may also flip the phone and the battery will fall out.



## Step 3



- Here is the phone without the battery.

## Step 4 — Logic Board



- Unscrew the six screws on the back of the phone using the Phillips #0 screw driver.

## Step 5



- Use the prying tool to pry off the phone's plastic frame.

## Step 6



- Use the prying tool to disconnect the rectangular connector.



## Step 7



- Use the prying tool to disconnect the small connector.

## Step 8



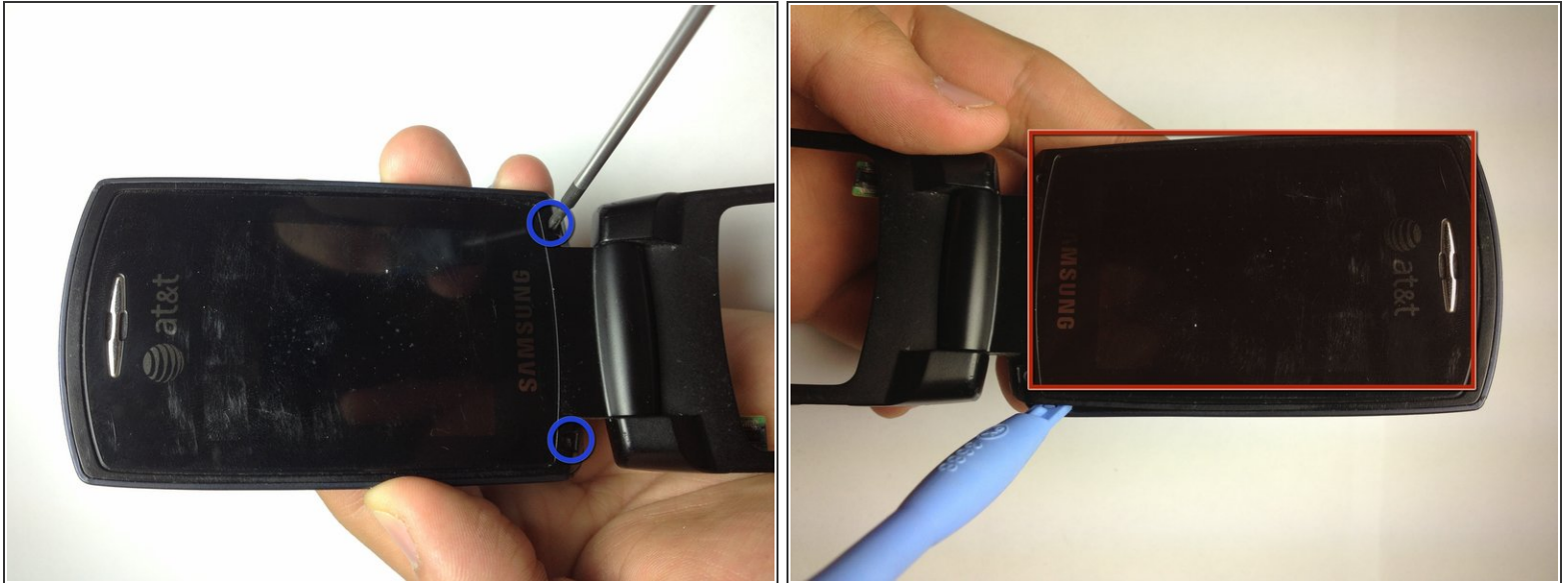
- Gently pull off the circuit board.

## Step 9



- Here is the phone without the logic board.

## Step 10 — Front Pane



- Use the Phillips #0 screw driver to remove the two screws.
- Place the screws in a safe place.
- Use the prying tool to gently pry the screen off, by slowly moving the prying tool around the entire edge of the screen (roughly highlighted with a red rectangle). You must be very gentle, otherwise the screen will crack.



## Step 11



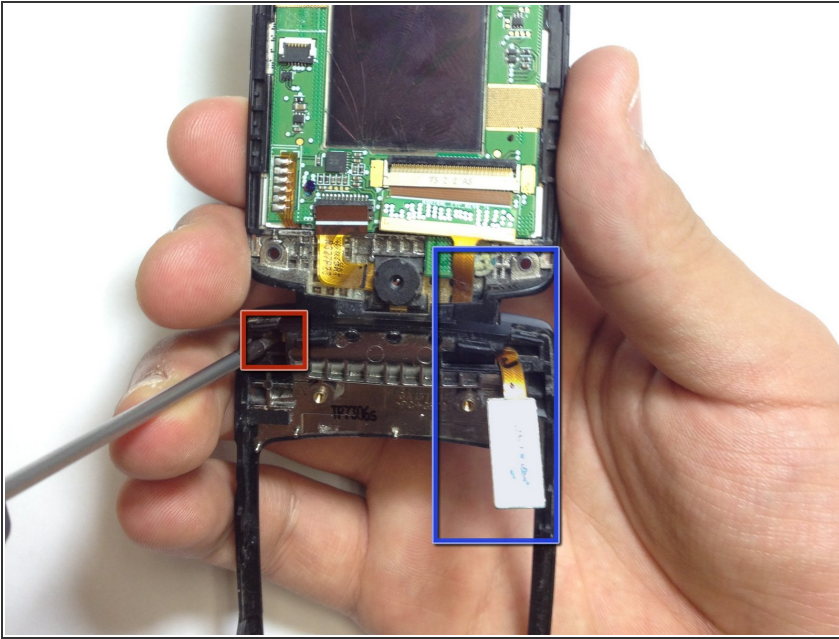
- Now we have access to the camera.
- We also have access to the speakers.
- Disconnect the flat cable to separate the two pieces.

## Step 12



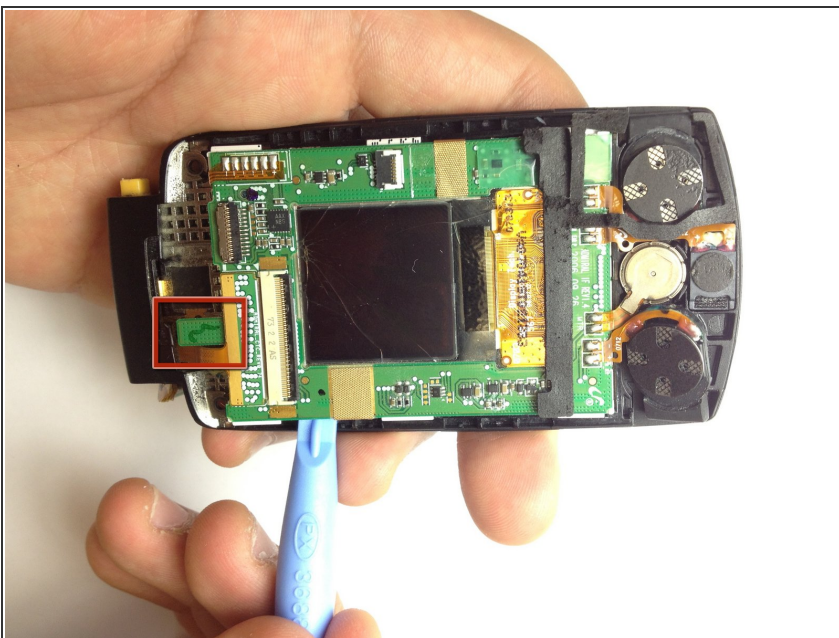
- Samsung SGH A707

## Step 13 — Display



- Separate the two flaps to make handling easier.
- Use a screw driver to press a latch in along the axis of the hinge and simultaneously pull the pieces apart.
- Gently pull the flat cable through the hinge.

## Step 14



- Use the prying tool to separate the screen from the rest of the phone.
- Be careful not to lose the little cube of foam and wire that is under the circuit board. It is important in connecting two different circuits and must be placed back when the phone is reassembled.

## Step 15



- Samsung SGH A707

To reassemble your device, follow these instructions in reverse order.