



# Samsung SGH A707 Front Pane Replacement

Replace a frontpane on your Samsung SGH A707 phone.

Written By: yfm



# INTRODUCTION

Use this guide to replace your Samsung SGH A707 phone's front pane.



## TOOLS:

- [Tweezers](#) (1)
  - [Phillips #0 Screwdriver](#) (1)
  - [iFixit Opening Tools](#) (1)
-

## Step 1 — Battery



- Press on the markings on the cover and pull it down to reveal the battery.

## Step 2



- Use your fingers to pull the battery out of its position. You may also flip the phone and the battery will fall out.



## Step 3



- Here is the phone without the battery.

## Step 4 — Logic Board



- Unscrew the six screws on the back of the phone using the Phillips #0 screw driver.

## Step 5



- Use the prying tool to pry off the phone's plastic frame.

## Step 6



- Use the prying tool to disconnect the rectangular connector.



## Step 7



- Use the prying tool to disconnect the small connector.

## Step 8



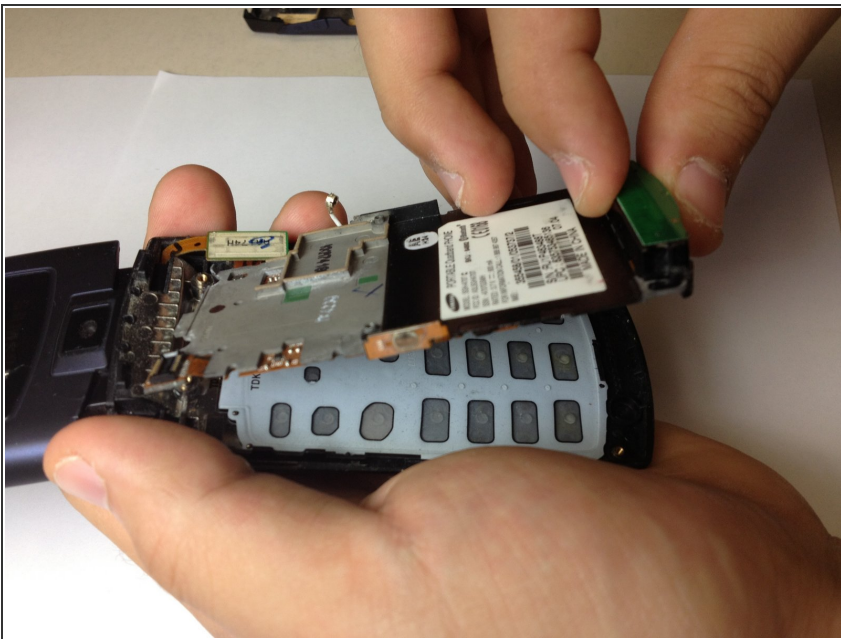
- Gently pull off the circuit board.

## Step 9



- Here is the phone without the logic board.

## Step 10 — Keypad



- Hold the phone and gently separate the circuit board that holds the dome switches and the front face of the

phone, revealing the rubber keyboard.

## Step 11



- Here is the phone without the dome switch circuit board.

## Step 12

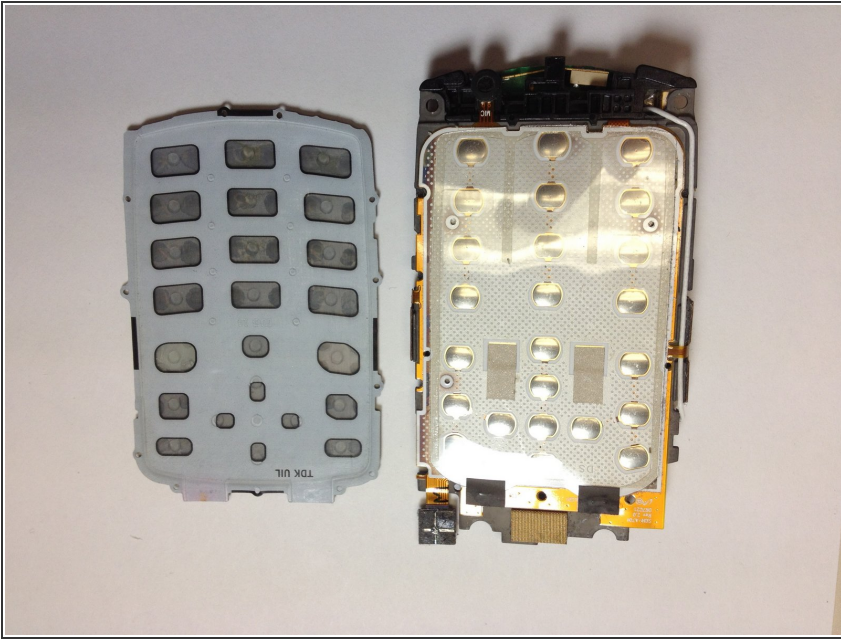


- Here is the phone and the rubber keyboard.



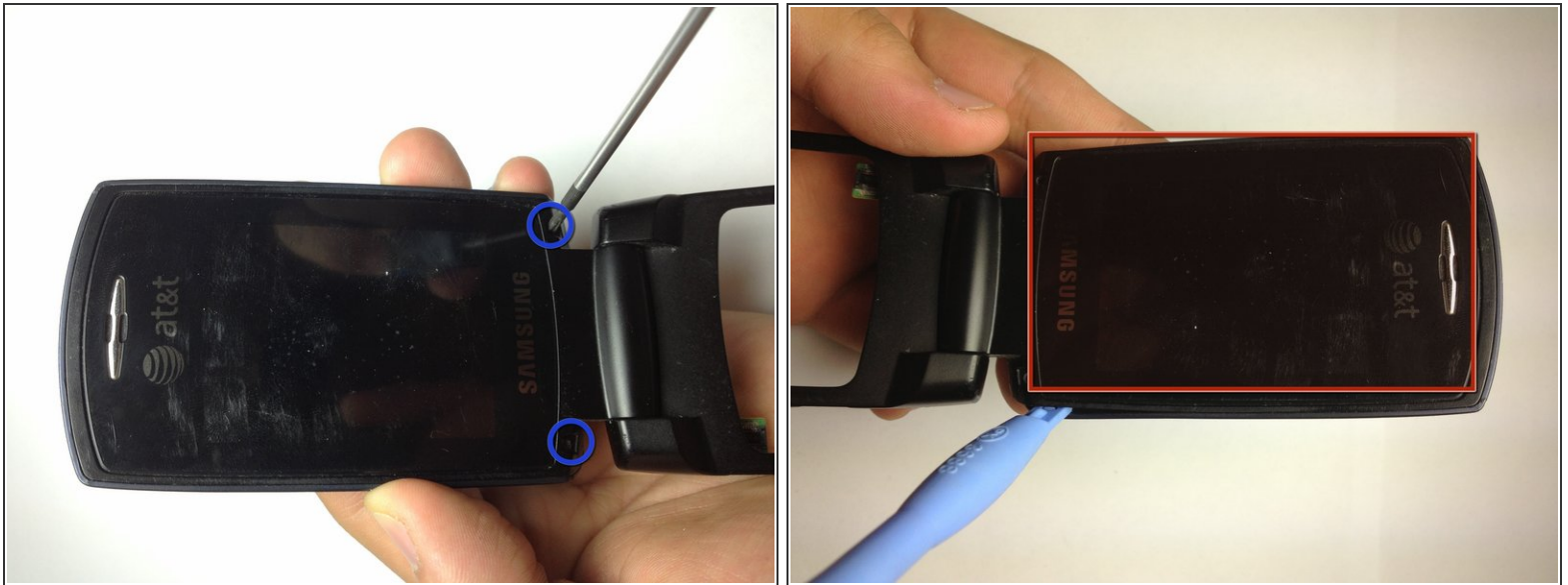


## Step 13



- Here is the rubber keyboard and the dome switch circuit board. A quick inspection of these elements can reveal keypad malfunctions. Look for dirt or debris that do not belong there.

## Step 14 — Front Pane



- Use the Phillips #0 screw driver to remove the two screws.
- Place the screws in a safe place.
- Use the prying tool to gently pry the screen off, by slowly moving the prying tool around the entire edge of the screen (roughly highlighted with a red rectangle). You must be very gentle, otherwise the screen will crack.

## Step 15



- Now we have access to the camera.
- We also have access to the speakers.
- Disconnect the flat cable to separate the two pieces.

## Step 16



- Samsung SGH A707

To reassemble your device, follow these instructions in reverse order.