



Samsung SGH A707 Speaker Replacement

Replace a speaker on your Samsung SGH A707 phone.

Written By: yfm



INTRODUCTION

Use this guide to replace your Samsung SGH A707 phone's speaker.



TOOLS:

- [Tweezers](#) (1)
 - [Phillips #0 Screwdriver](#) (1)
 - [iFixit Opening Tools](#) (1)
-

Step 1 — Battery



- Press on the markings on the cover and pull it down to reveal the battery.

Step 2



- Use your fingers to pull the battery out of its position. You may also flip the phone and the battery will fall out.

Step 3



- Here is the phone without the battery.

Step 4 — Logic Board



- Unscrew the six screws on the back of the phone using the Phillips #0 screw driver.

Step 5



- Use the prying tool to pry off the phone's plastic frame.

Step 6



- Use the prying tool to disconnect the rectangular connector.

Step 7



- Use the prying tool to disconnect the small connector.

Step 8



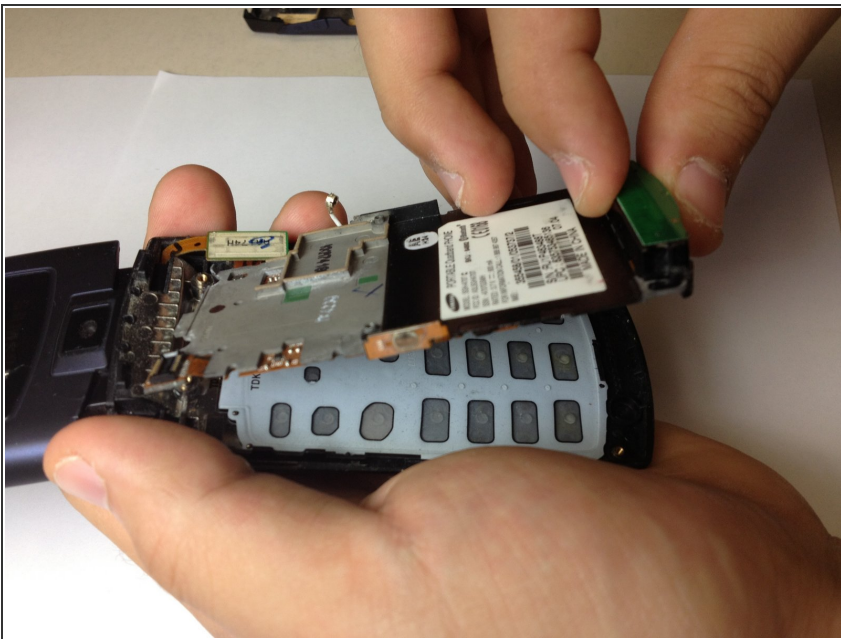
- Gently pull off the circuit board.

Step 9



- Here is the phone without the logic board.

Step 10 — Keypad



- Hold the phone and gently separate the circuit board that holds the dome switches and the front face of the

phone, revealing the rubber keyboard.

Step 11



- Here is the phone without the dome switch circuit board.

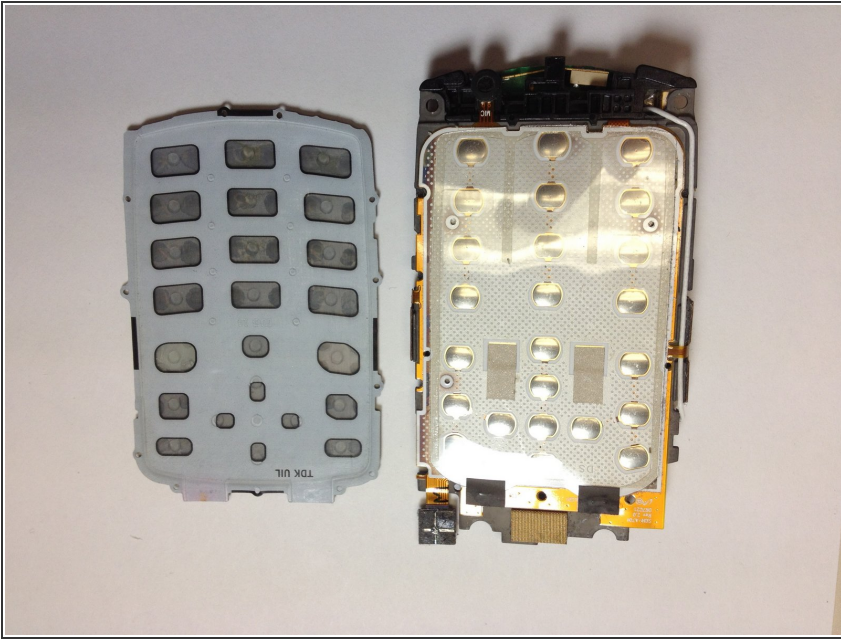
Step 12



- Here is the phone and the rubber keyboard.



Step 13



- Here is the rubber keyboard and the dome switch circuit board. A quick inspection of these elements can reveal keypad malfunctions. Look for dirt or debris that do not belong there.

Step 14 — Front Pane



- Use the Phillips #0 screw driver to remove the two screws.
- Place the screws in a safe place.
- Use the prying tool to gently pry the screen off, by slowly moving the prying tool around the entire edge of the screen (roughly highlighted with a red rectangle). You must be very gentle, otherwise the screen will crack.

Step 15



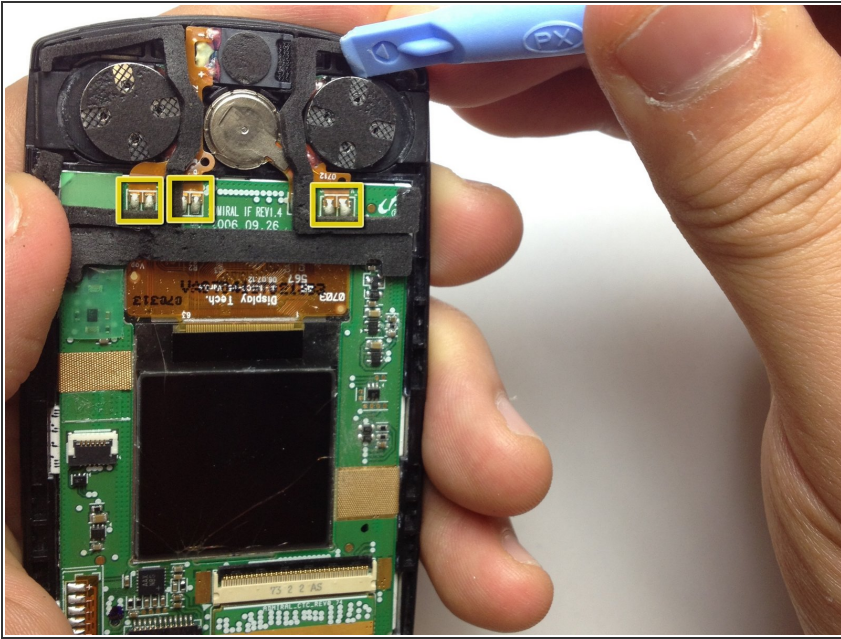
- Now we have access to the camera.
- We also have access to the speakers.
- Disconnect the flat cable to separate the two pieces.

Step 16



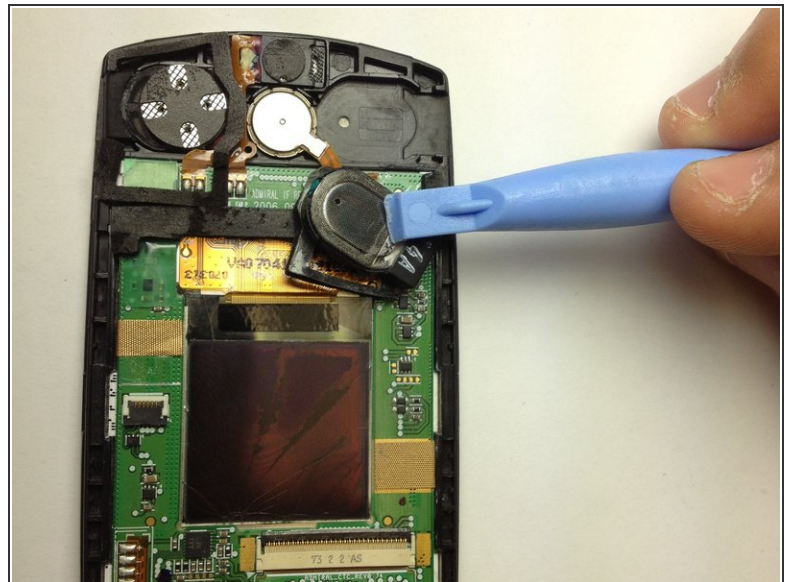
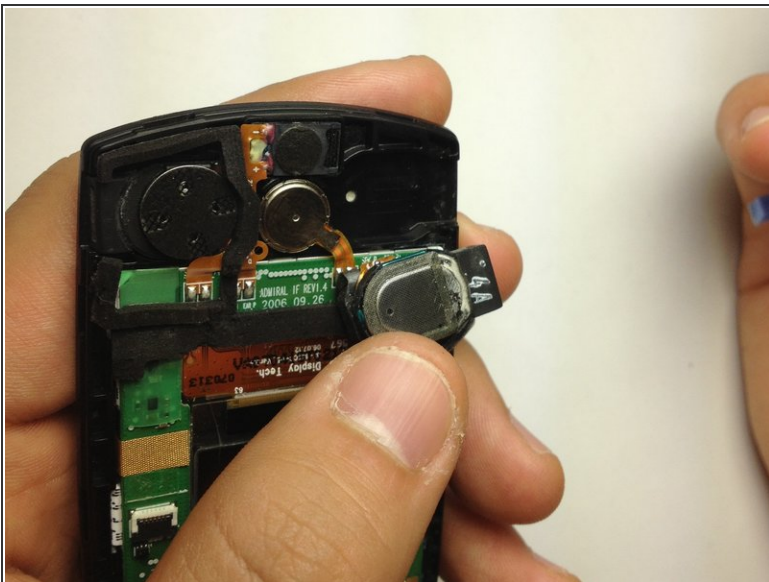
- Samsung SGH A707

Step 17 — Speaker



- Use the prying tool to remove the speaker. They are secured in place by glue, so some force is needed.
- Be careful not to slip the tool onto your hand as you apply force.
- Use a soldering iron to disconnect the wires from the speakers (highlighted in the yellow boxes).
- There's risk of skin burn when using the soldering iron, caution is needed.
- Avoid breathing in the fumes while soldering.

Step 18



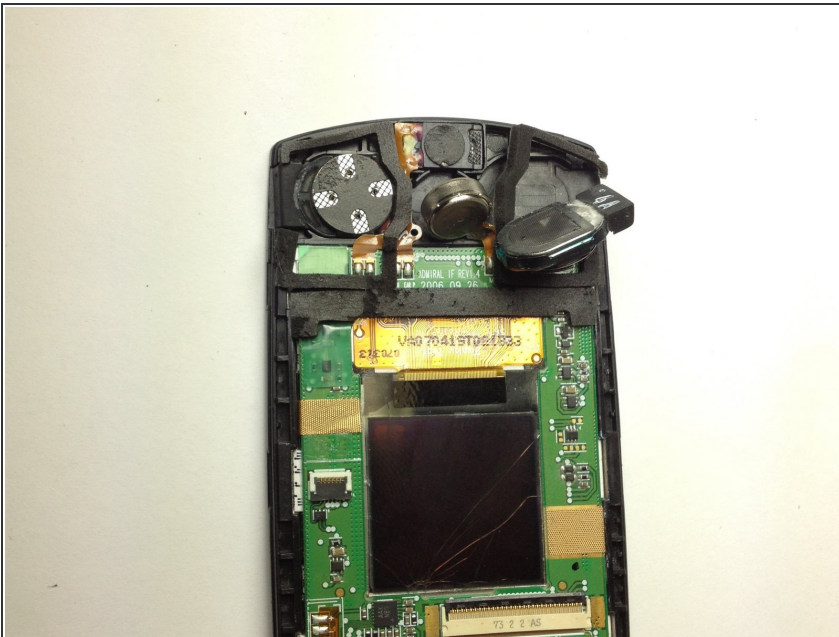
- Samsung SGH A707

Step 19



- Samsung SGH A707

Step 20



- Samsung SGH A707

To reassemble your device, follow these instructions in reverse order.