



Samsung SGH-E317 Camera Replacement

Replacement of camera on the front panel of cell phone.

Written By: Michael Strange



INTRODUCTION

Items needed:

You will need a wedge shaped tool in order to pry open the front panel of cell phone and a screwdriver.



TOOLS:

- [Tweezers](#) (1)
 - [Phillips #1 Screwdriver](#) (1)
 - [iFixit Opening Tools](#) (1)
-

Step 1 — Camera



- Remove the plastic coverings at the base of the LCD screen using your fingers.

Step 2



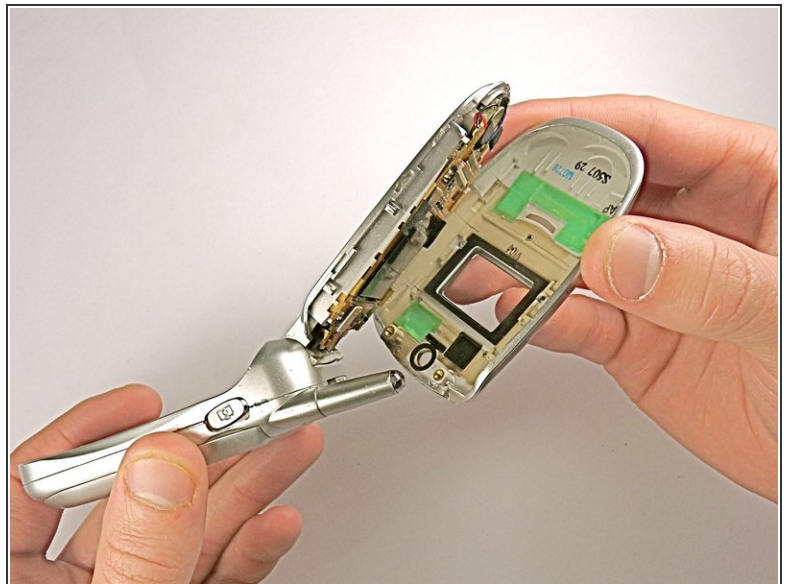
- Remove the two 4.5mm screws located underneath the plastic coverings.
- ⓘ You may want to use tweezers to remove the loosened screws.

Step 3



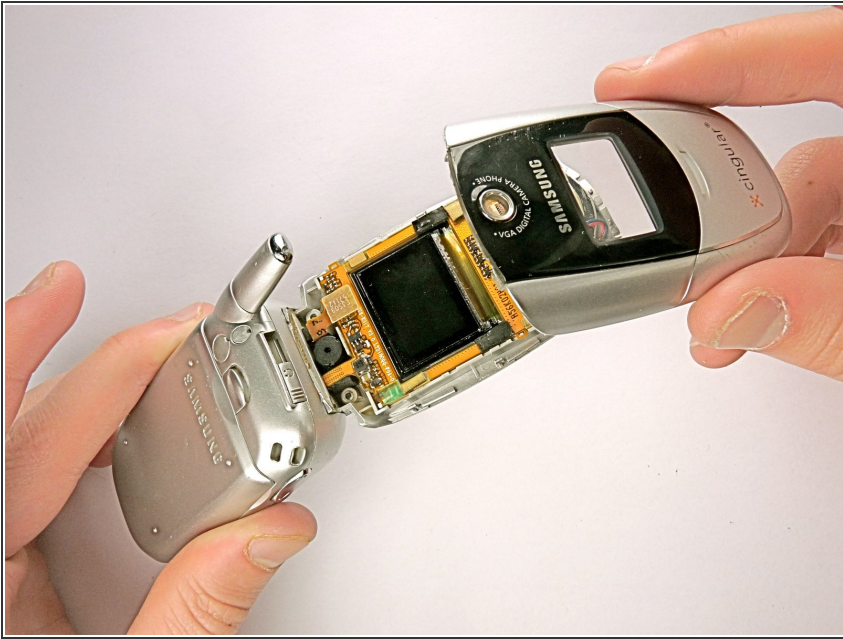
- Wedge the plastic opening tool under the crevice on the inner surface of the phone screen.
- Gently pry the top panel off around the entire frame.

Step 4



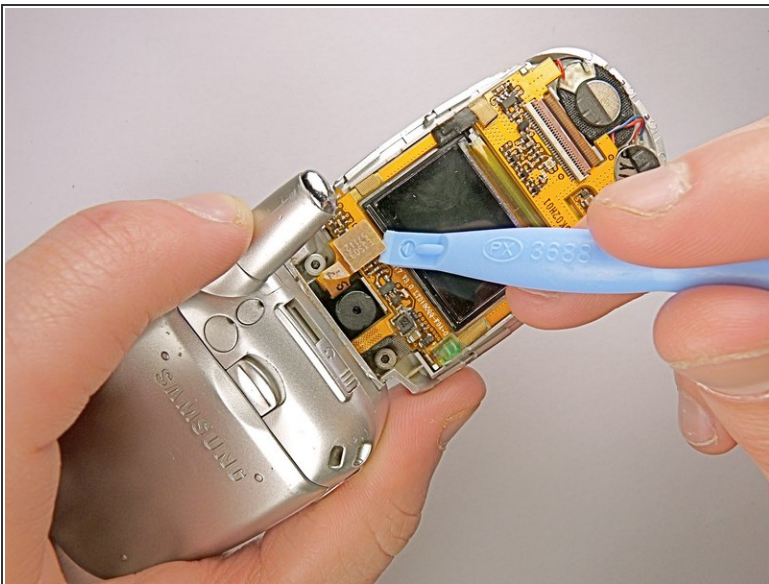
- Make sure that the top panel is completely separated from the LCD display around the entire perimeter.

Step 5



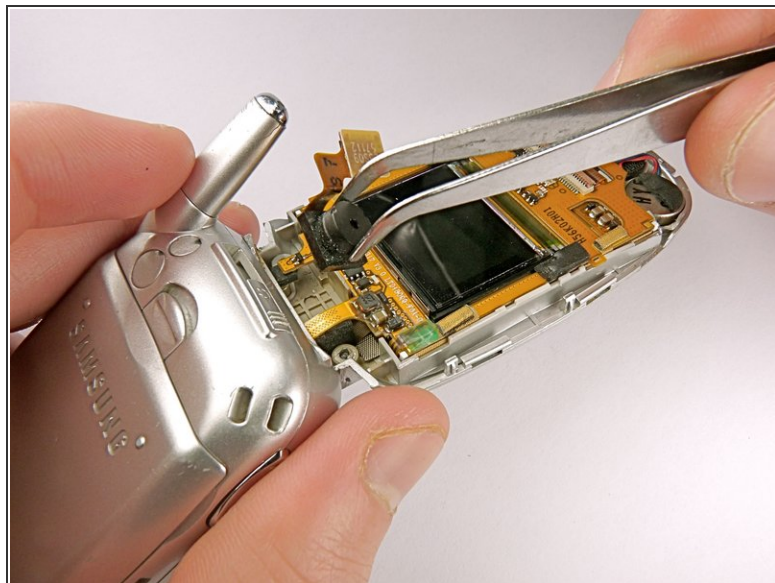
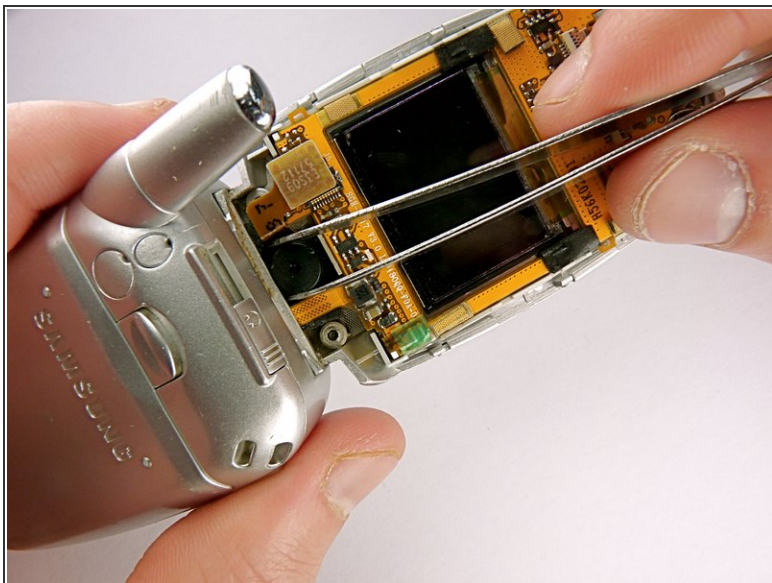
- Remove the top panel.

Step 6



- Detach the connecting wire panel from the LCD display system.

Step 7



- Using tweezers, remove the camera from the cellphone casing.

To reassemble your device, follow these instructions in reverse order.