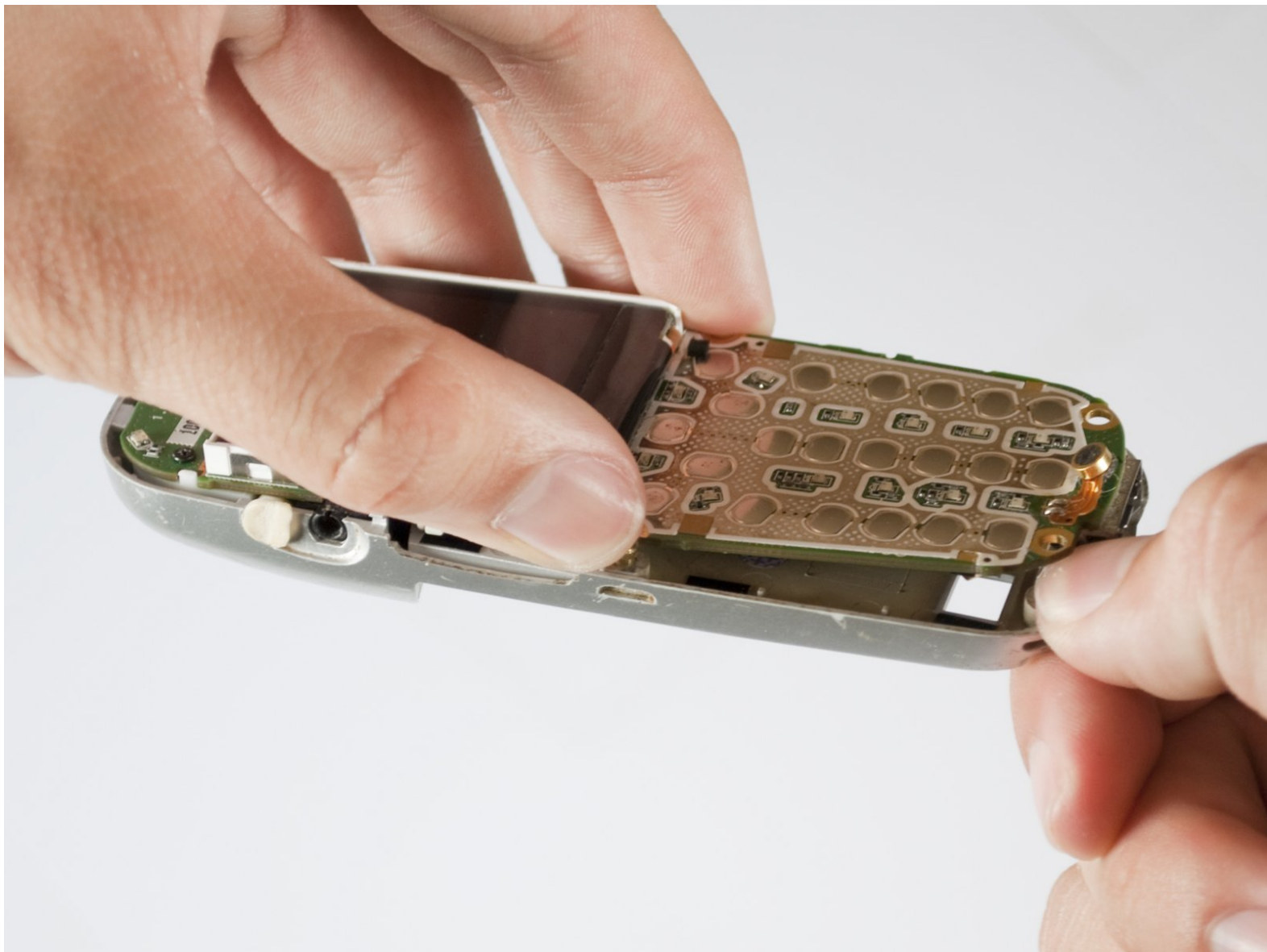




# Samsung SGH-X105 Logic Board Replacement

Written By: DJ Tarazona



---

## INTRODUCTION

Replace the logic board when all other methods of reparation fail



### TOOLS:

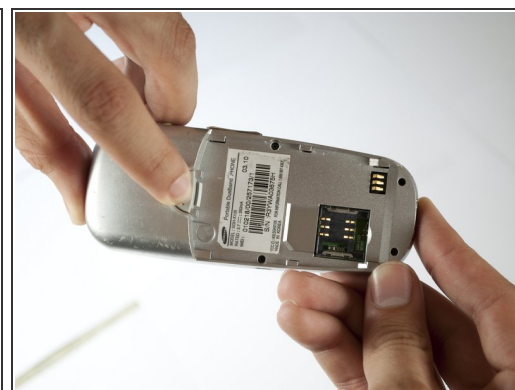
- [Phillips #00 Screwdriver](#) (1)
-

## Step 1 — Battery



- Rotate the phone onto its front side so that the LCD screen is facing away from you.

## Step 2



- Remove the battery by pressing down on the battery release button while sliding the battery downwards.

## Step 3 — Front & Back Panels



- Remove the four small black screws that secure the back phone panel using the Phillips #00 screwdriver.
- ⓘ Complete removal of screws may not be necessary.

## Step 4



- Carefully separate the front and back panels by gently prying them apart. Start at the bottom of the phone (near the AC charger input).
- ⓘ Volume control button will be unsecured and may fall out as soon as the panels are separated.
- ⓘ Gentle force may be required to separate the panels at the top latch.
- ⓘ There are two wires connecting the front and back panels. Be careful not to rip these wires out when separating the panels.

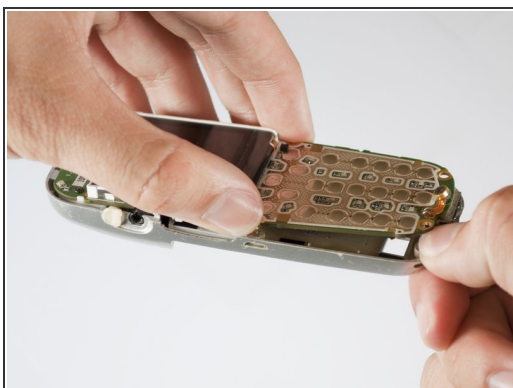


## Step 5



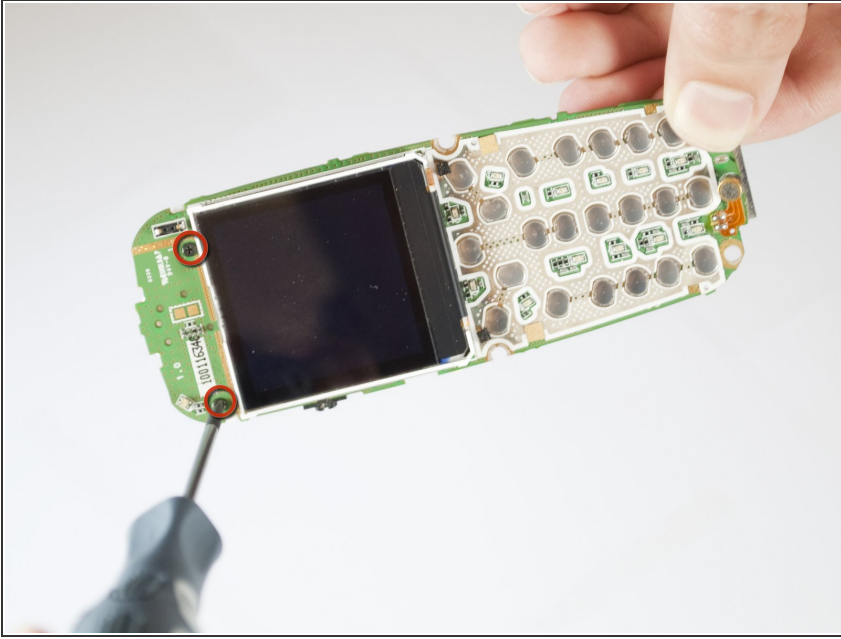
- Using your nails, tweezers, or any precise grabbing tool, pinch the antenna wire connector (clear plastic plug) and pull gently. It should pop out rather easily.

## Step 6 — Logic Board



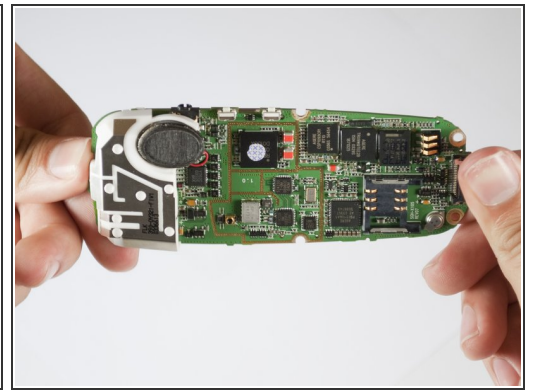
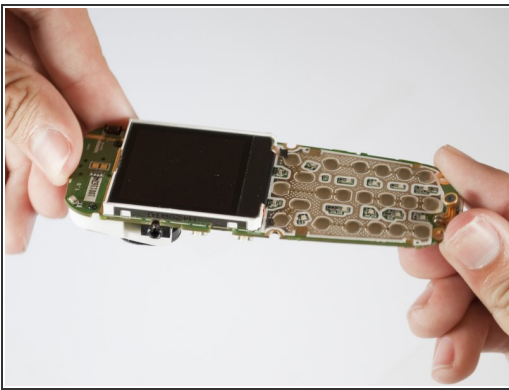
- Gently remove the logic board and LCD screen from the back cover of the phone.

## Step 7



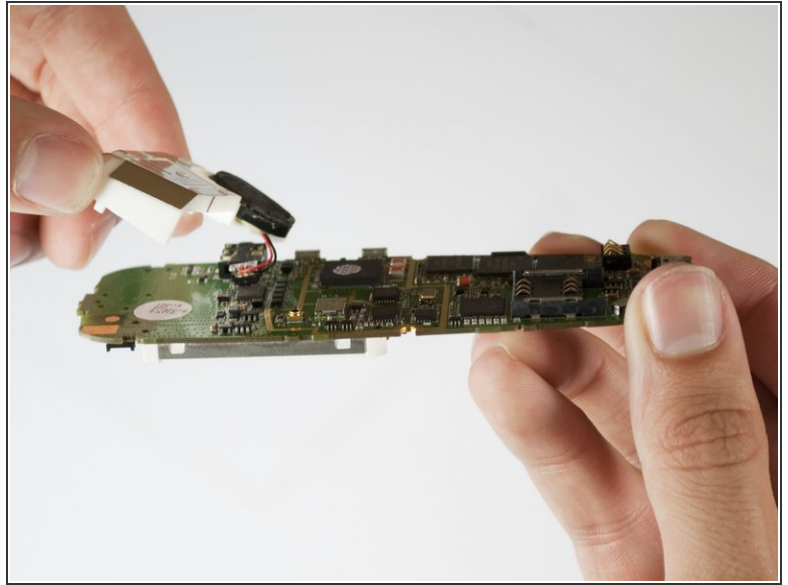
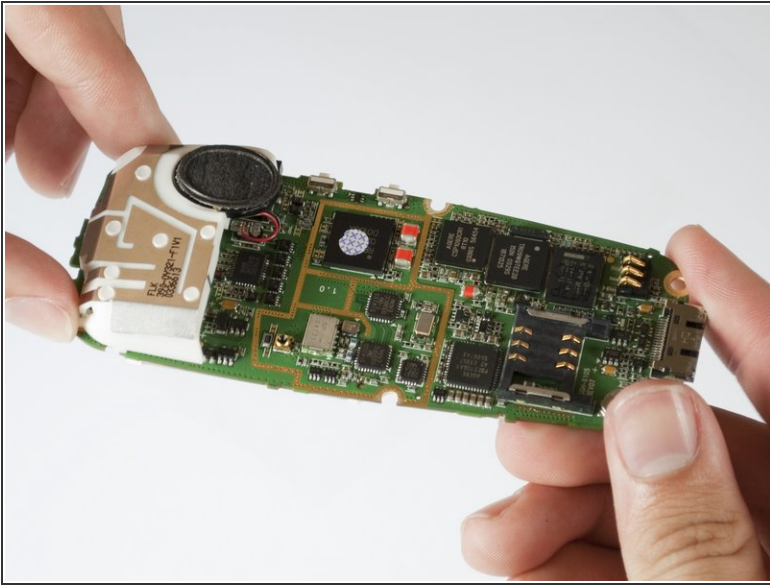
- Remove the two screws above the LCD screen with a Phillips #00 screw driver. These connect to the white plastic cover in which the speaker is housed located on the reverse side of the logic board.
- ⓘ Make sure the white plastic cover remains in contact with the logic board while removing the screws.

## Step 8



- Rotate the logic board so that the LCD screen is face down.
- ⓘ Make sure the white plastic cover remains in contact with the logic board while it is being rotated.
- ⓘ Screws may fall out as the object is rotated.

## Step 9

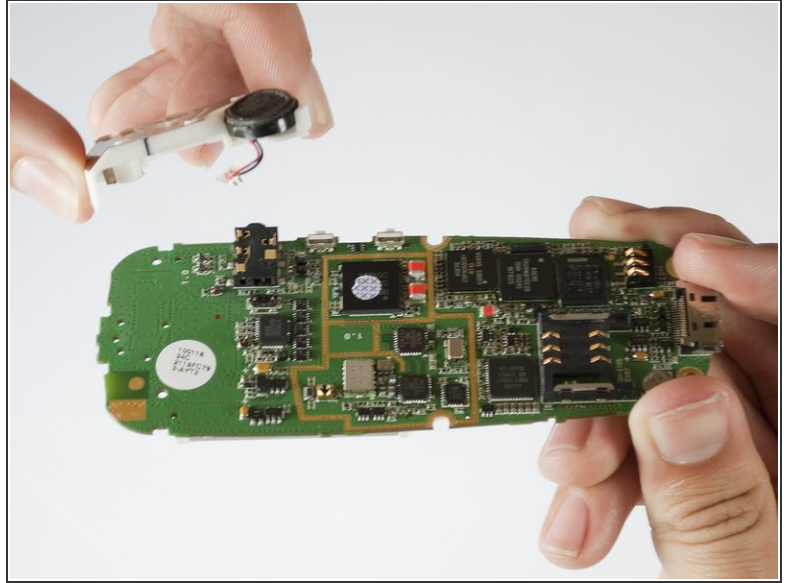
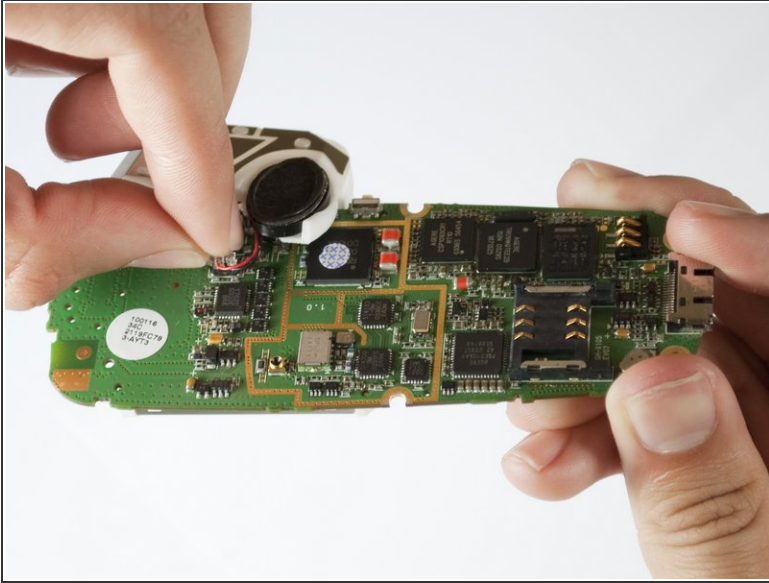


- Gently begin to separate the white plastic cover from the logic board.

⚠ This cover will be connected by two small wires. Be sure not to break this connection.



## Step 10



- Locate the two wires (black and red) which connect the speaker to the logic board.
- Using your nails, tweezers, or any precise grabbing tool, pinch the speaker connector (clear plastic plug that goes into the logic board) and pull gently. It should pop out easily.
- Once the wires are disconnected and the screws removed, the white plastic cover can easily be removed from the logic board.

To reassemble your device, follow these instructions in reverse order.