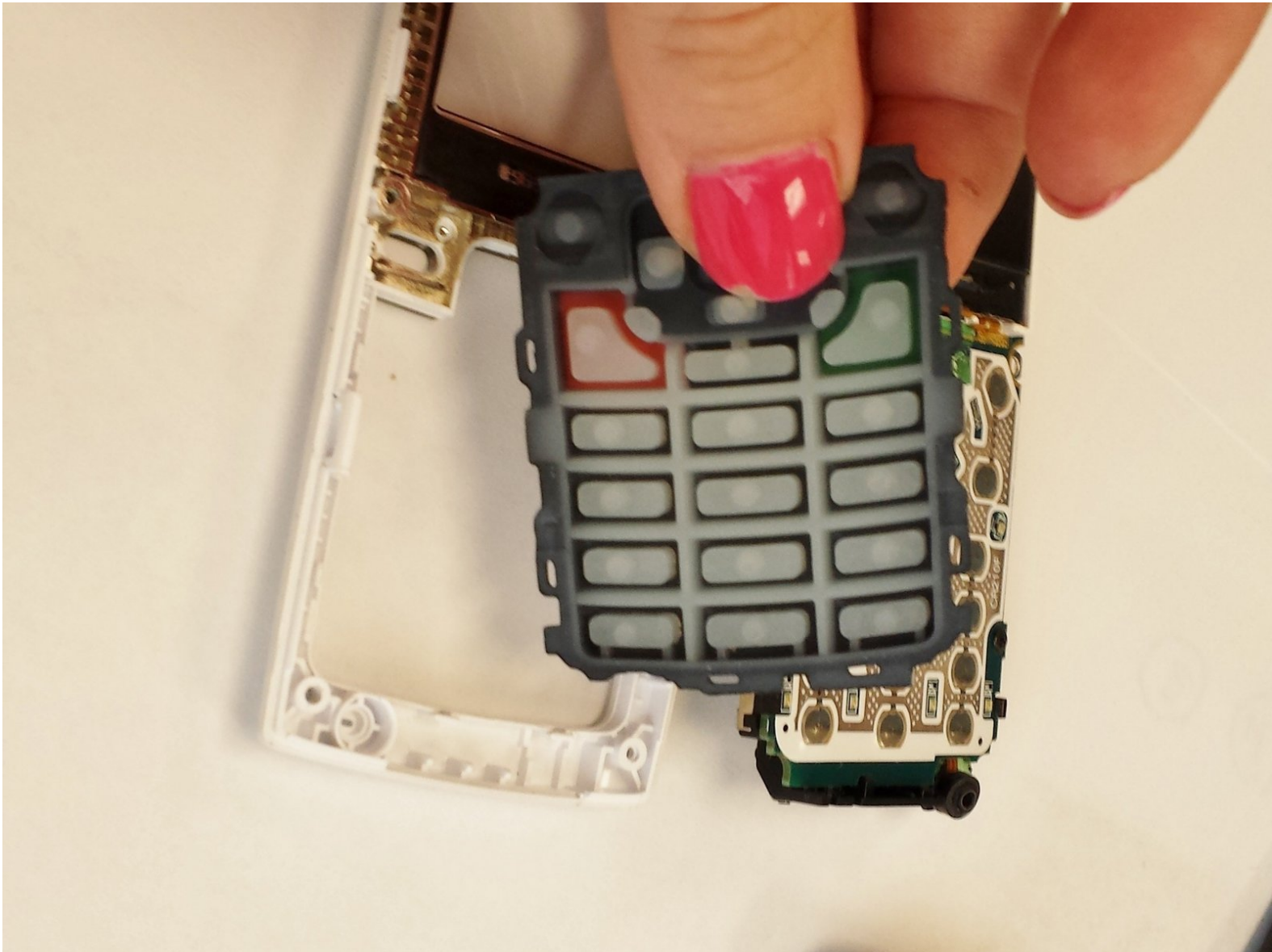




Samsung SPEX SCH-R210 Keypad Replacement

This guide will show you how to replace the keypad if they are broken.

Written By: Susan



INTRODUCTION

This is an easy DIY guide on how to replace the keypad. This requires taking off the back cover, the battery, as well as the motherboard. The keypad will pop out easily after the motherboard is removed. You will need 2 different screwdrivers for this guide.



TOOLS:

- [Phillips #00 Screwdriver](#) (1)
 - [1.5mm Hex Screwdriver](#) (1)
-

Step 1 — Disassembly of Samsung SPEX SCH-R210 back cover



- Remove back cover by pressing down with your thumb on top of the back cover.

Step 2



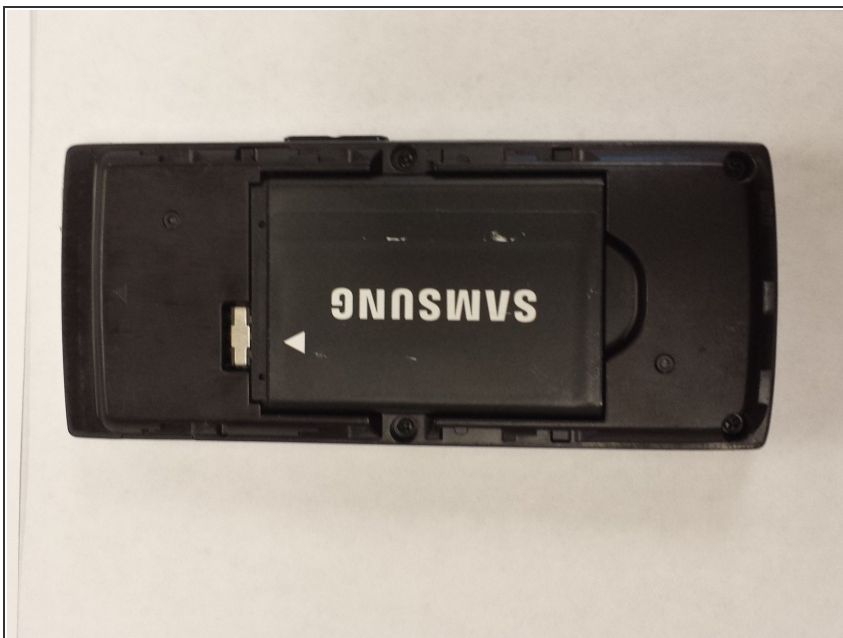
- You will hear a popping noise as the cover releases from the phone. Continue to slide the cover down.

Step 3



- Lift the cover off the phone and put aside

Step 4 — Battery



- Remove the back lid of the cell phone.

Step 5



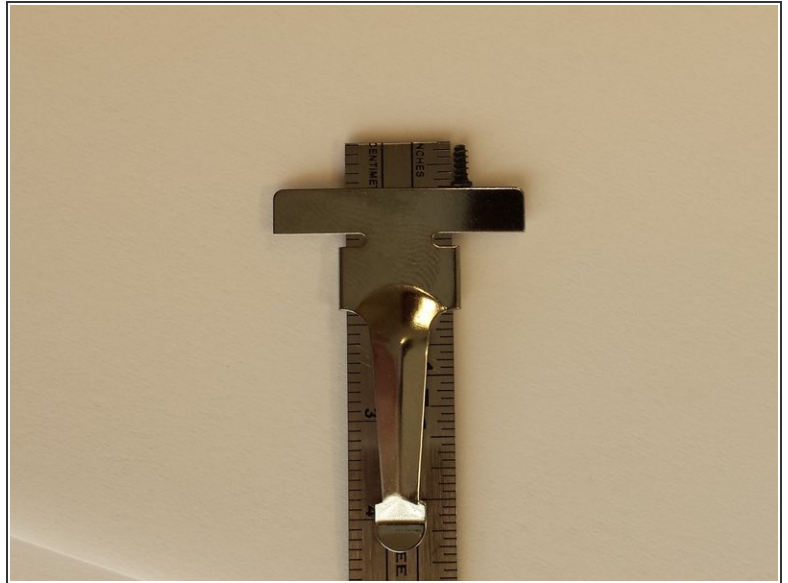
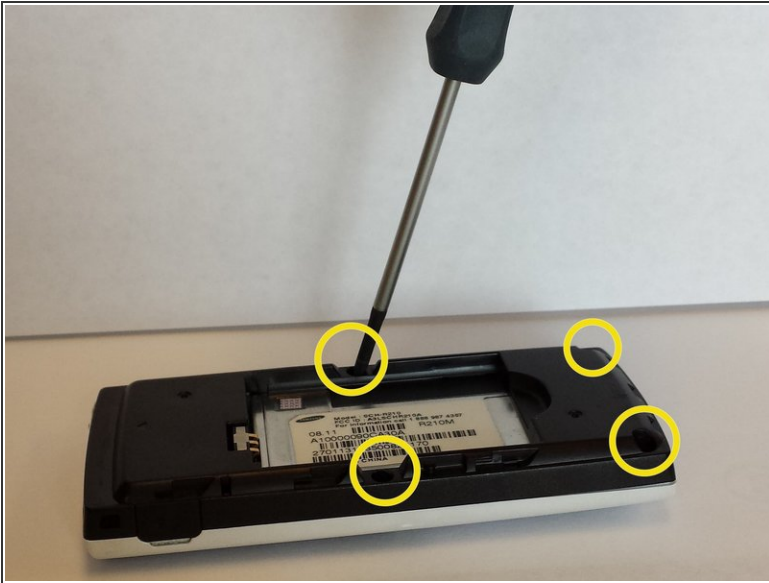
- Place your thumb on the edge to lift the battery.

Step 6



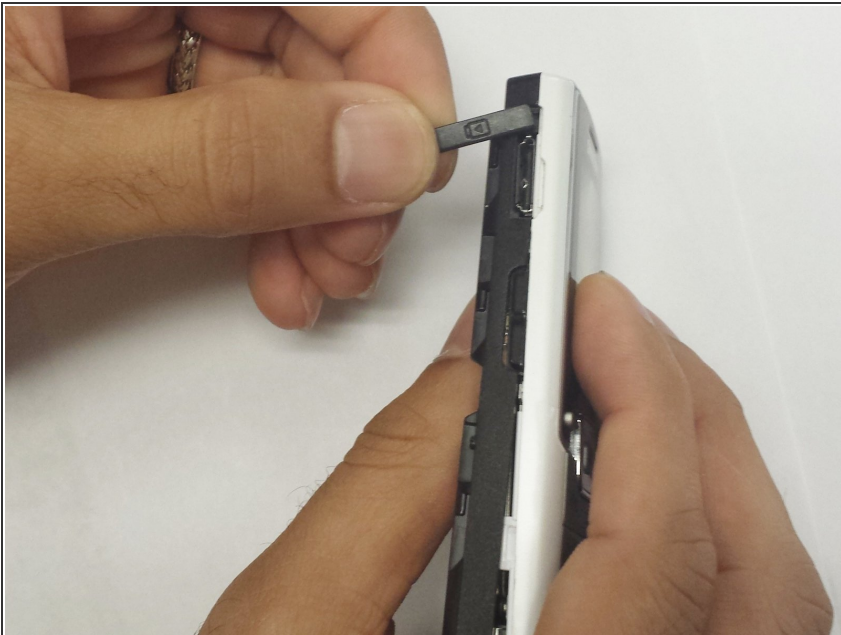
- Remove the battery.

Step 7 — Keypad



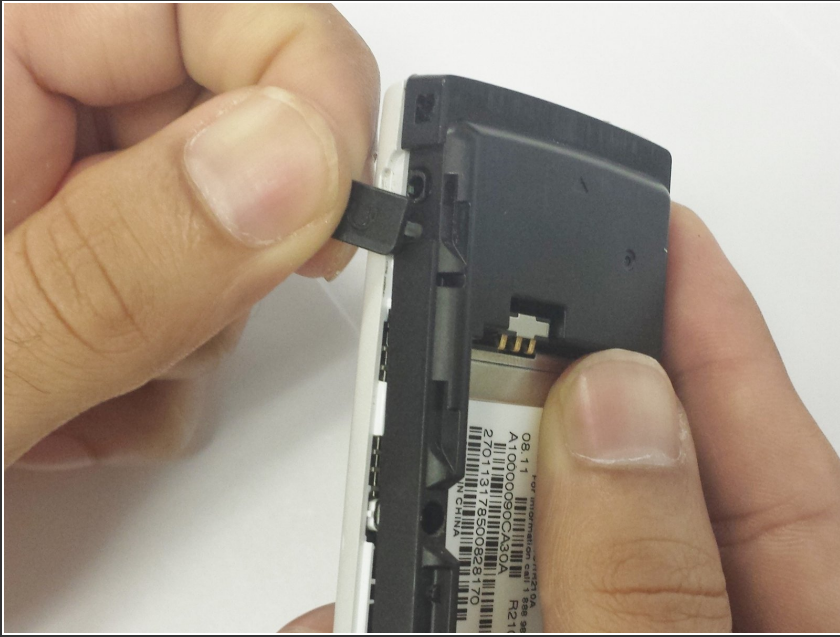
- After removing the battery, unscrew the 4 3/16" screws on the black plastic cover with the Phillips #00 Screwdriver.

Step 8



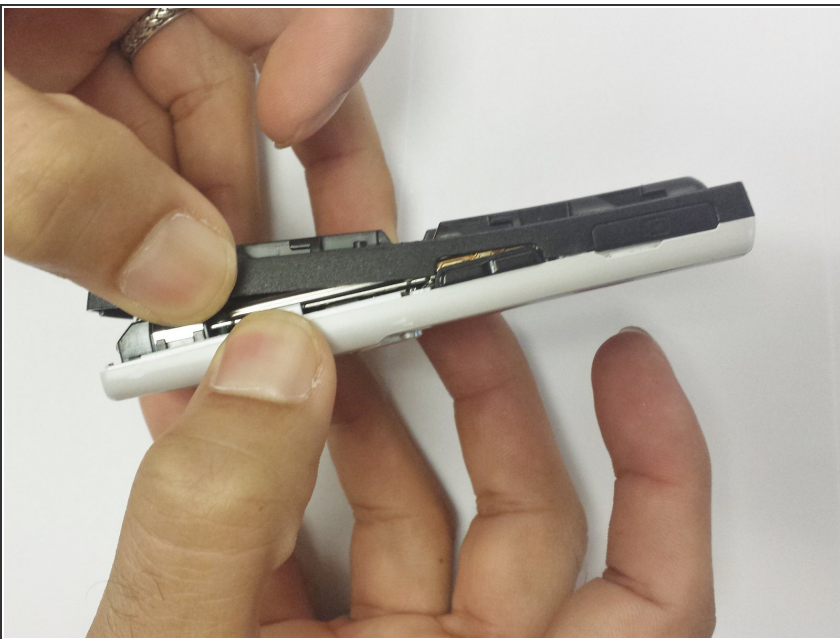
- Remove the headphone cover from the left side of the black plastic cover.

Step 9



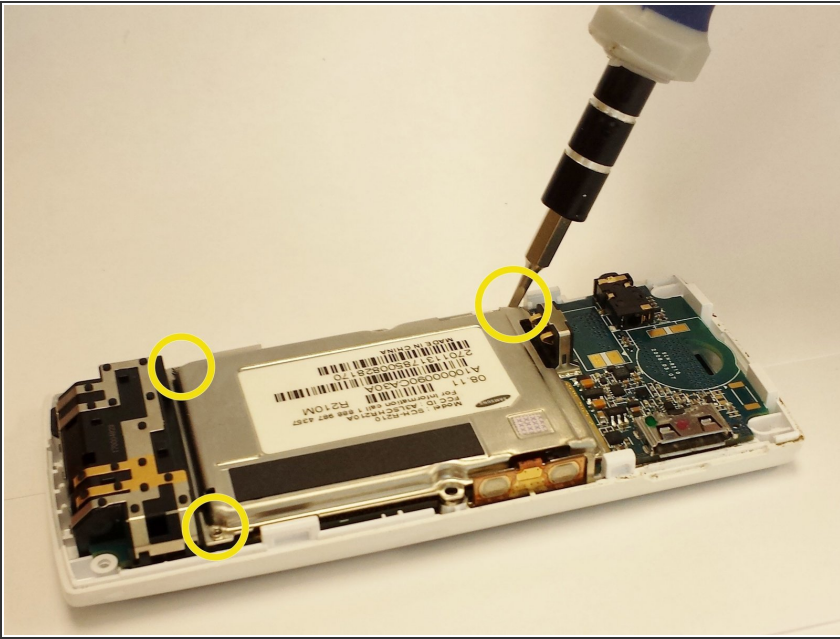
- Remove the volume cover from the right side of the black plastic cover.

Step 10



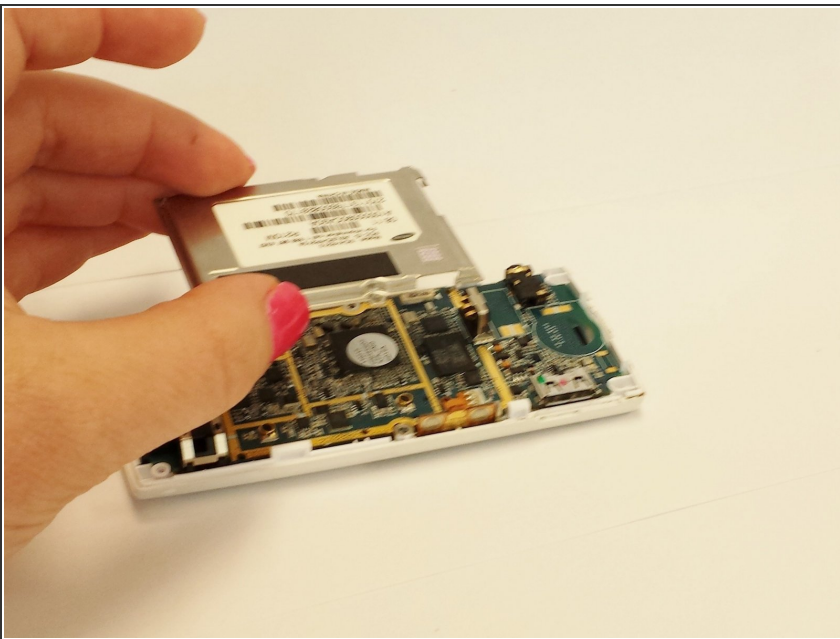
- ⚠ Remove the black plastic cover from the back of the phone. This may take a little effort to remove.

Step 11



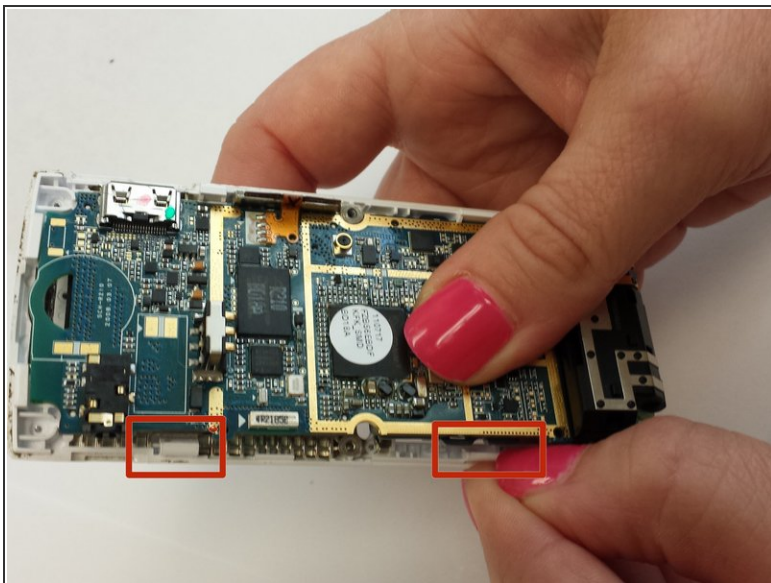
- Unscrew the 3 3/32" screws located around motherboard with the 1.5 mm flathead screwdriver.

Step 12



- Lift off the metal plate and place to the side.

Step 13



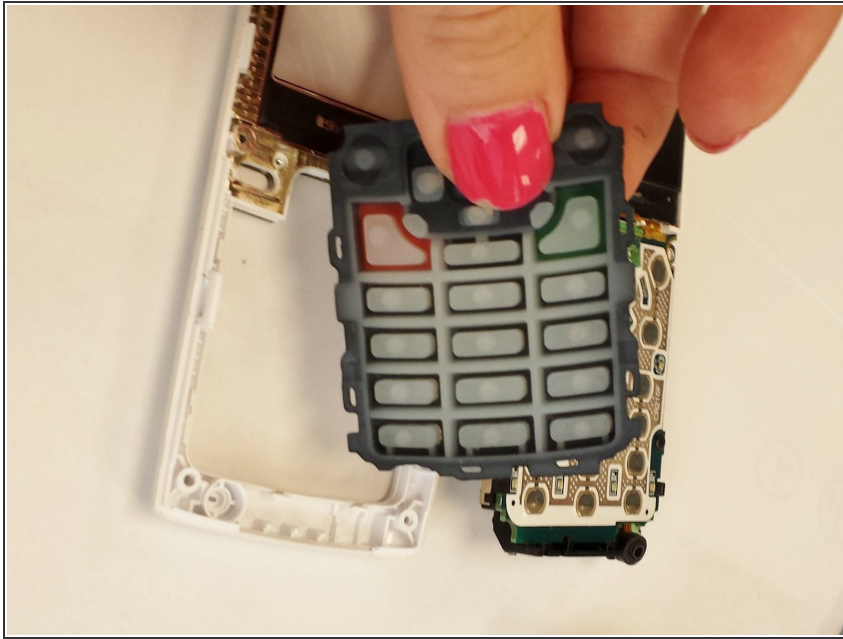
- Remove the motherboard by pushing on the white plastic tabs that are holding the motherboard in place, while simultaneously pushing on the keypad. This will pop the motherboard loose.

Step 14



- To remove the keypad, apply pressure from the front of the case. It will come out easily.

Step 15



- Replace the keypad with a new keypad and reverse steps to put the phone back together.

To reassemble your device, follow these instructions in reverse order.