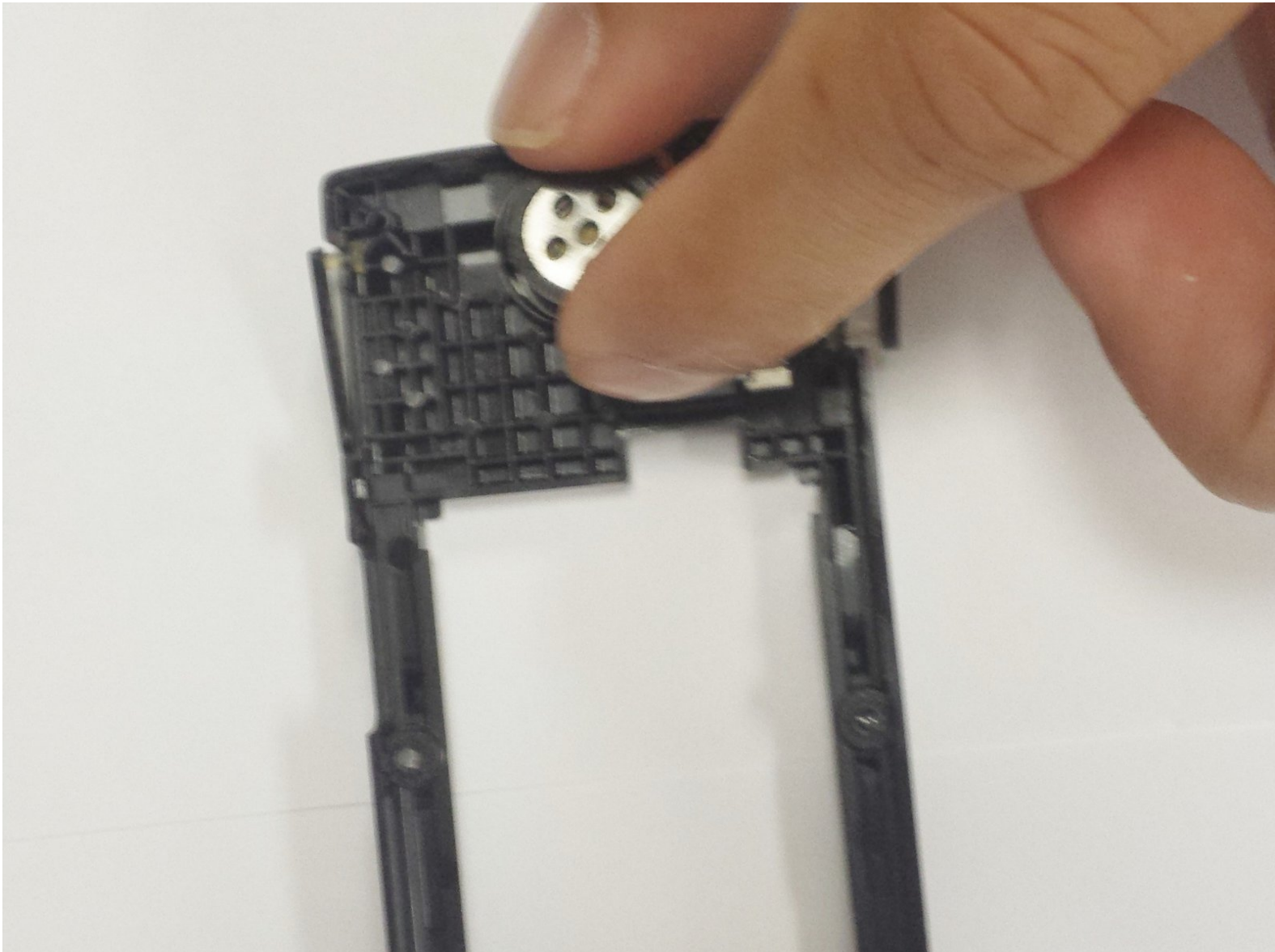




Samsung SPEX SCH-R210 Speaker Replacement

This guide will show you how to replace the speaker if it is not working properly.

Written By: Susan



INTRODUCTION

This is an easy DIY guide to replace the speaker. It involves removing the back cover, battery, and plastic cover over the motherboard. You will only need a screwdriver for this guide.

TOOLS:

- [Phillips #00 Screwdriver](#) (1)
-

Step 1 — Disassembly of Samsung SPEX SCH-R210 back cover



- Remove back cover by pressing down with your thumb on top of the back cover.

Step 2



- You will hear a popping noise as the cover releases from the phone. Continue to slide the cover down.

Step 3



- Lift the cover off the phone and put aside

Step 4 — Battery



- Remove the back lid of the cell phone.

Step 5



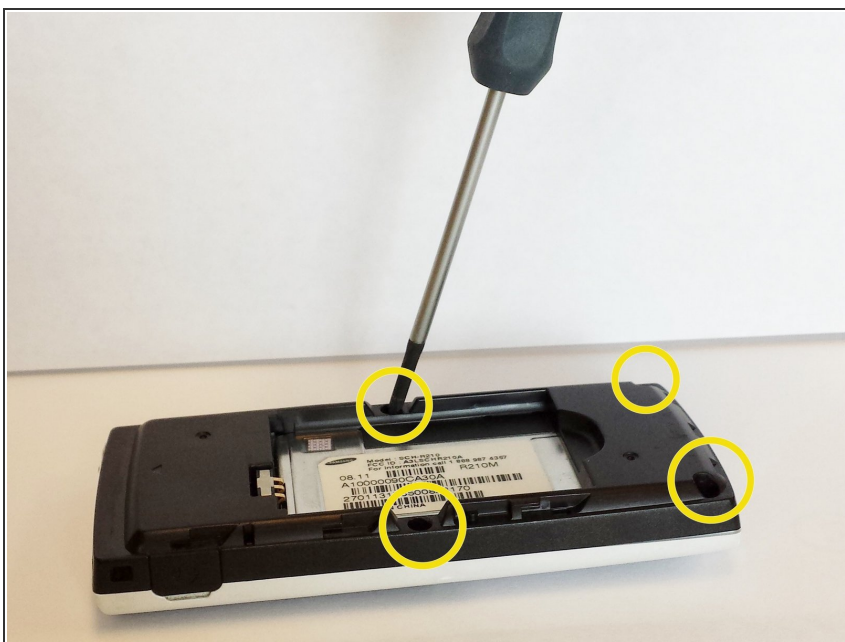
- Place your thumb on the edge to lift the battery.

Step 6



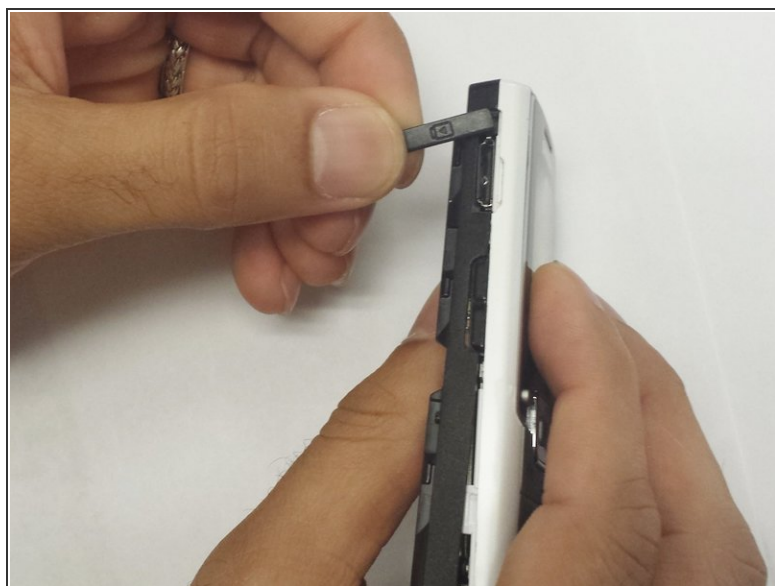
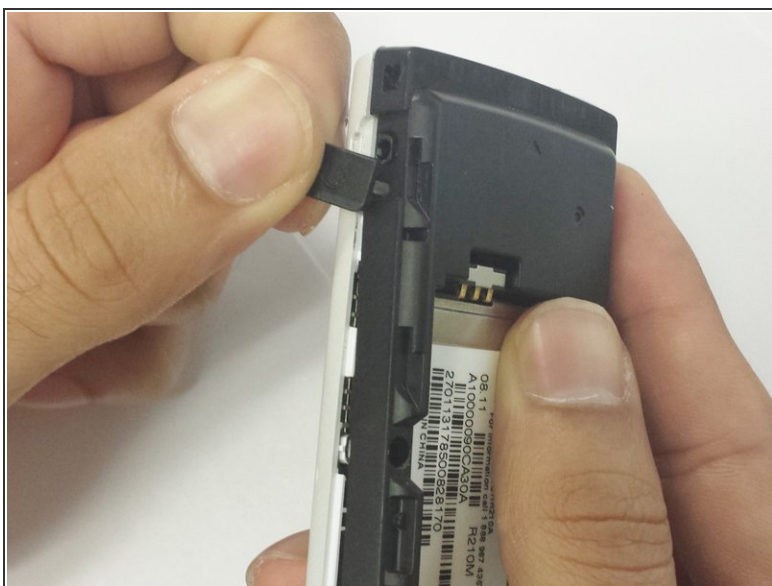
- Remove the battery.

Step 7 — Speaker



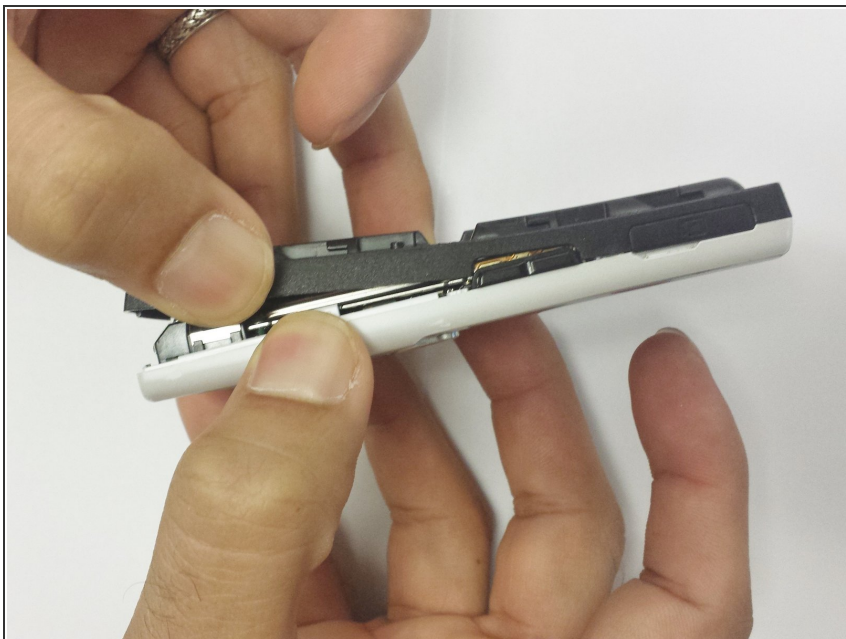
- Once the battery is removed, use the Phillips #00 screwdriver to unscrew the 4 3/16" screws holding the black plastic cover in place.

Step 8



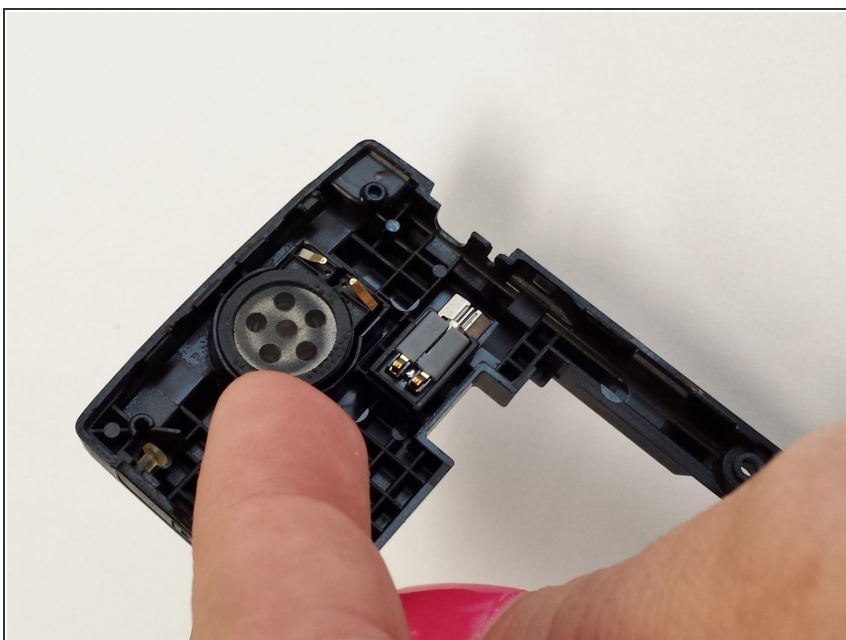
- Remove the headphone cover from the left side and the volume cover from the right side of the black plastic cover.

Step 9



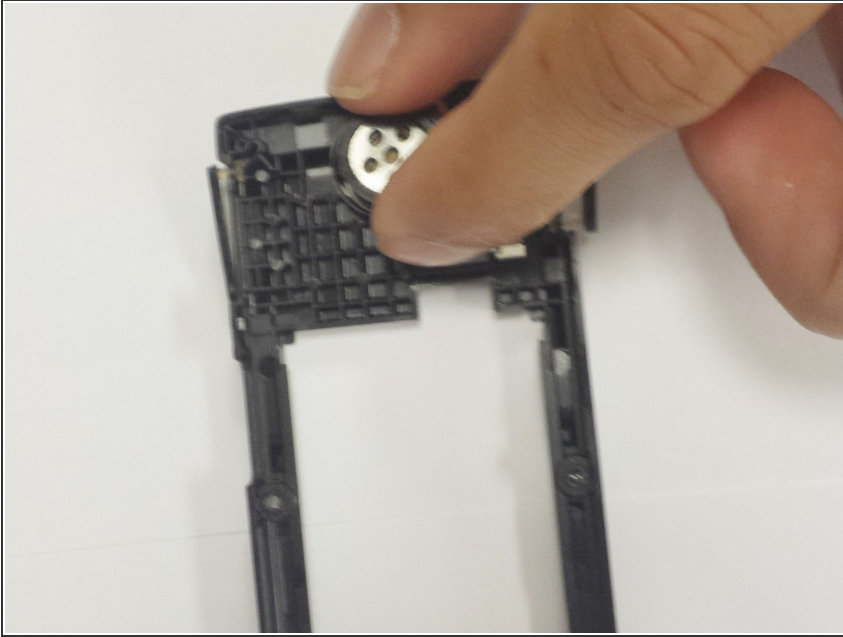
- ⚠ Remove the black plastic cover from the back of the phone. This may take a little effort.

Step 10



- The speaker is located on the opposite side of the black plastic cover. Using your fingernail, pry the speaker out of the cover.

Step 11



- Replace with a new speaker.

To reassemble your device, follow these instructions in reverse order.