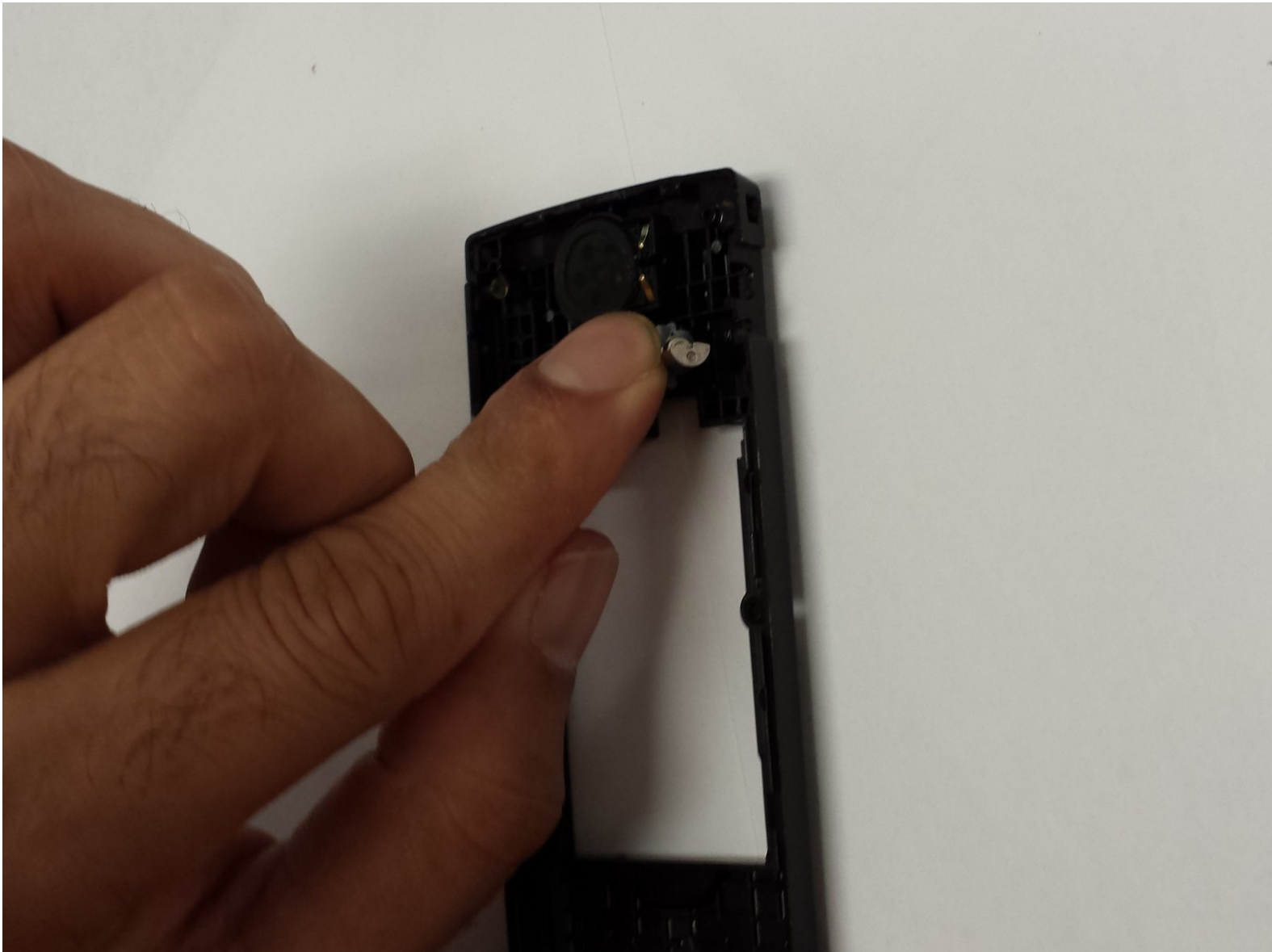




Samsung SPEX SCH-R210 antenna Replacement

This guide will show you how to replace an antenna.

Written By: Susan



INTRODUCTION

This is an easy DIY guide on how to replace the antenna. It involves removing the back cover, the battery and the plastic cover over the motherboard. You will need a screwdriver to remove screws and tweezers to remove the antenna.



TOOLS:

- [Phillips #00 Screwdriver](#) (1)
 - [Tweezers](#) (1)
-

Step 1 — Disassembly of Samsung SPEX SCH-R210 back cover



- Remove back cover by pressing down with your thumb on top of the back cover.

Step 2



- You will hear a popping noise as the cover releases from the phone. Continue to slide the cover down.

Step 3



- Lift the cover off the phone and put aside

Step 4 — Battery



- Remove the back lid of the cell phone.

Step 5



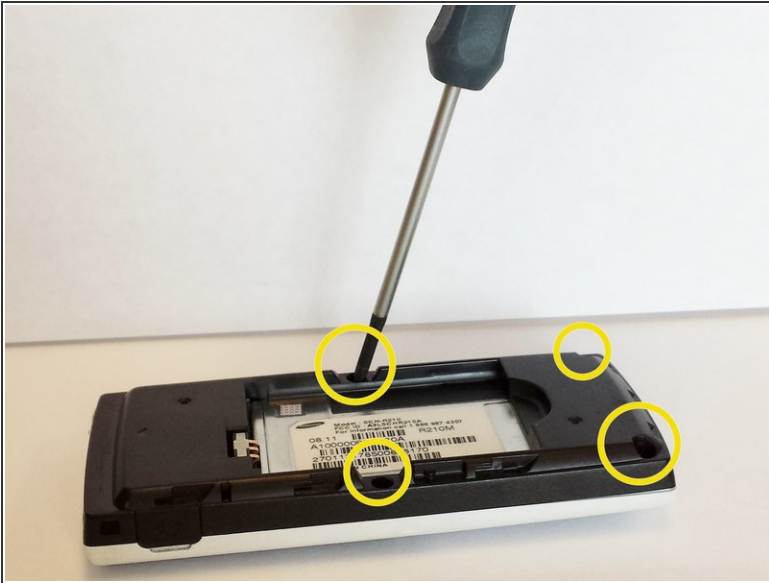
- Place your thumb on the edge to lift the battery.

Step 6



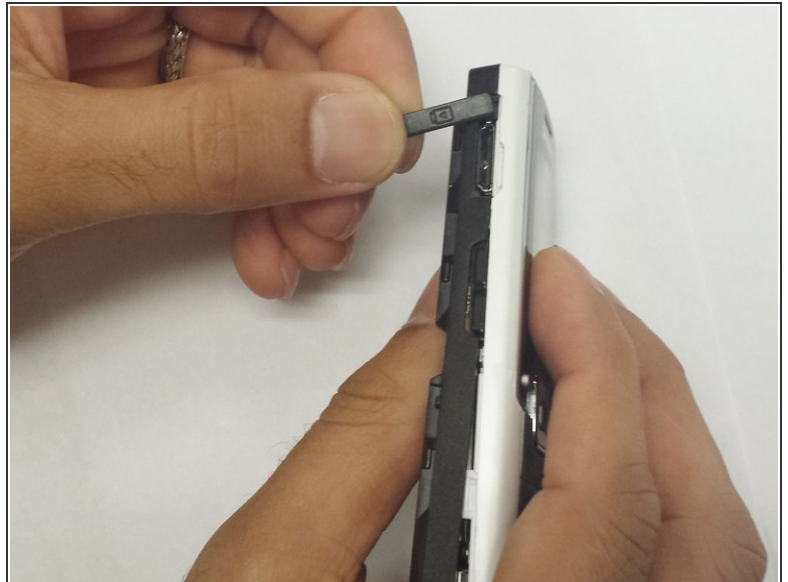
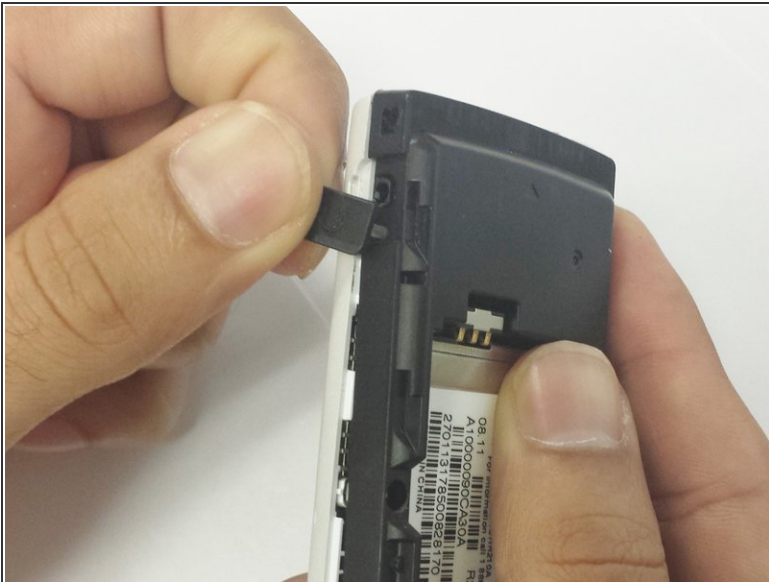
- Remove the battery.

Step 7 — Antenna



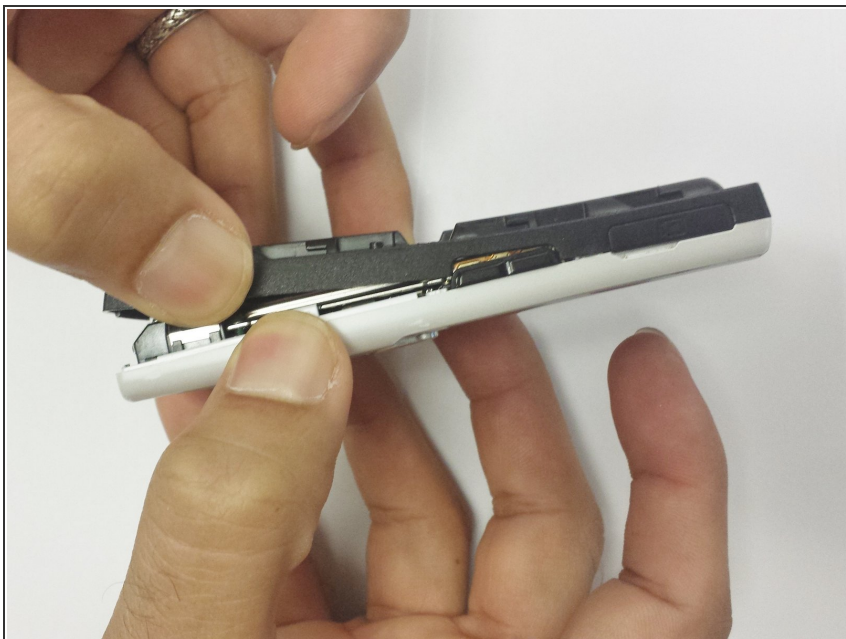
- After removing the battery, unscrew the 4 3/16" screws on the black plastic cover with the Phillips #00 screwdriver.

Step 8



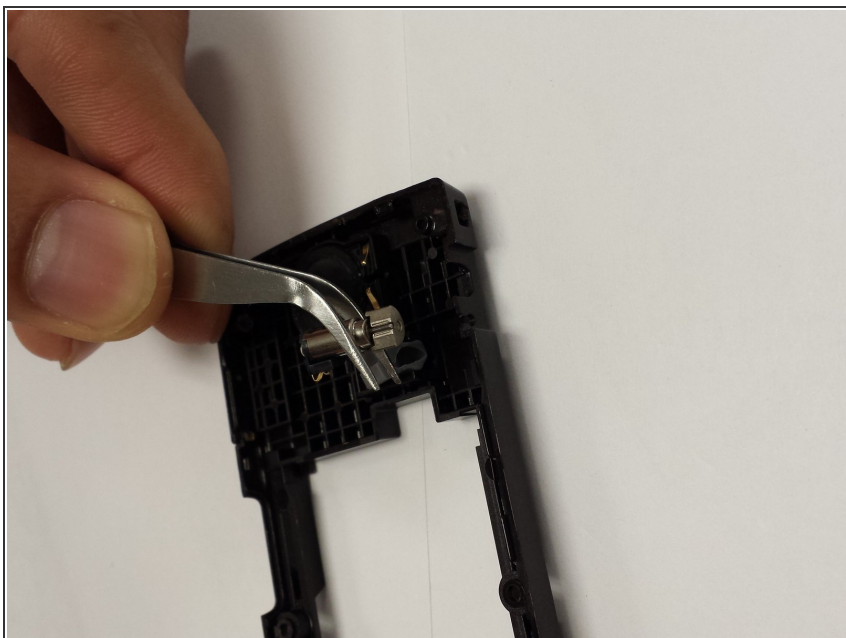
- Remove the headphone cover from the left side and the volume cover from the right side of the phone.

Step 9



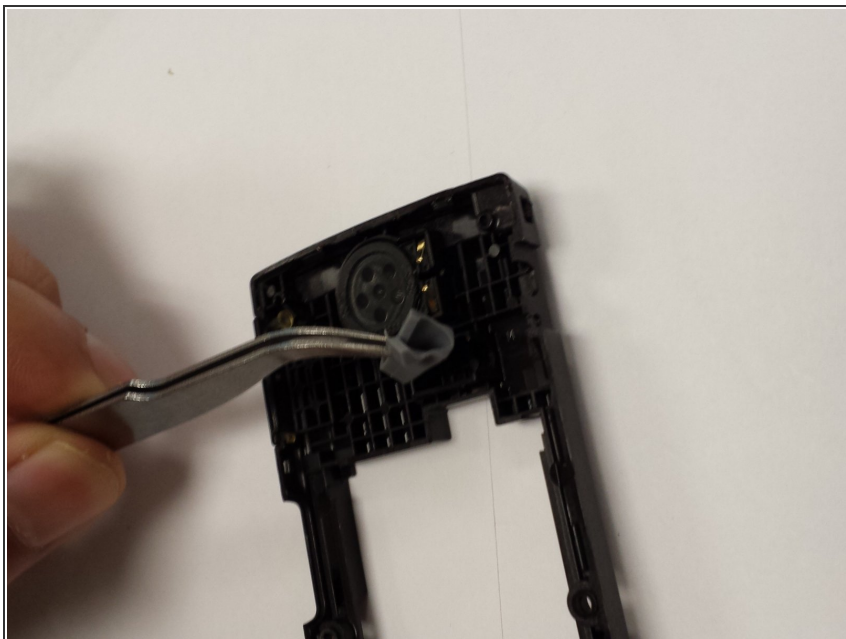
- ⚠ Remove the black plastic cover from the back of the phone. This may take a little effort to remove.

Step 10



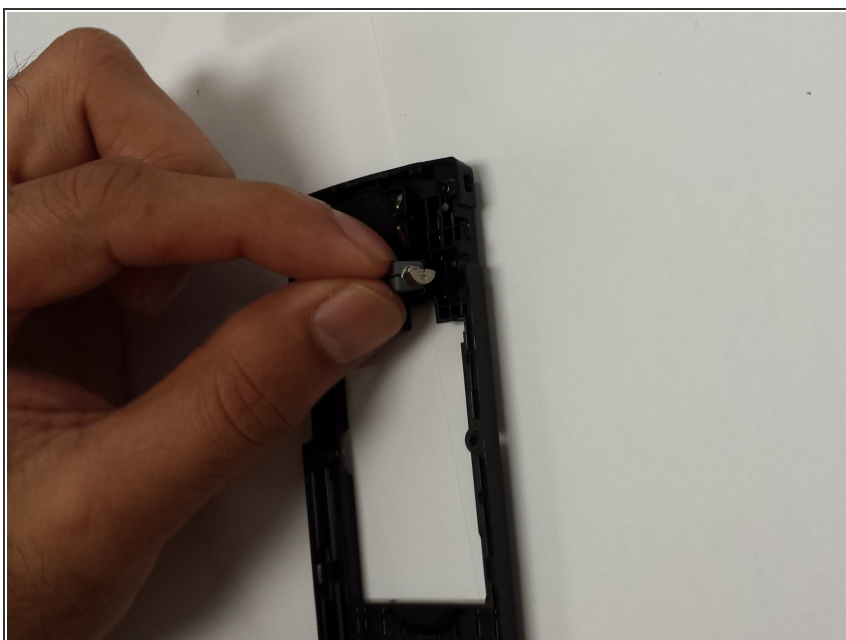
- The antenna is located on the opposite side of the black plastic cover. Use the tweezers to remove the antenna.

Step 11



- The gray rubber antenna cover will need to come out as well. Use the tweezers to remove the gray cover.

Step 12



- Replace with a new antenna.

To reassemble your device, follow these instructions in reverse order.