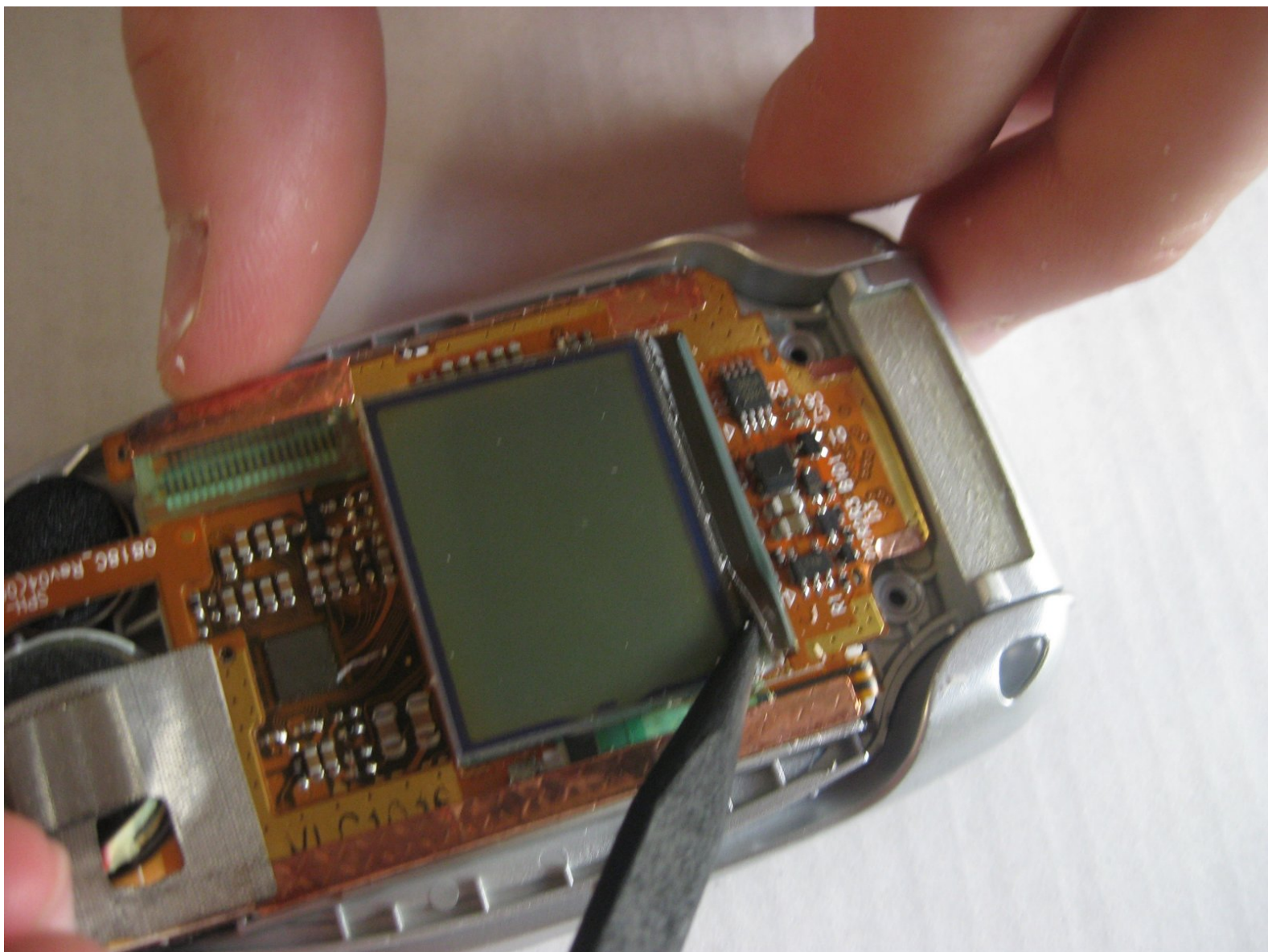




# Samsung SPH-A500 Front LCD Display Replacement

Written By: Derek Panger



# INTRODUCTION

Breaking down the phone to replace the LCD screen.



## TOOLS:

- [Phillips #0 Screwdriver](#) (1)
- [Super Glue](#) (1)



## PARTS:

- [replacement LCD screen](#) (1)

## Step 1 — Front LCD Display



- Flip open the phone, remove the two rubber covers under the LCD screen.
- Remove the two screws using a small Philips screwdriver.

## Step 2



- Using a plastic opening tool, pry open the back cover of the LCD screen.
- ⓘ Note: Some force may be required.



### Step 3



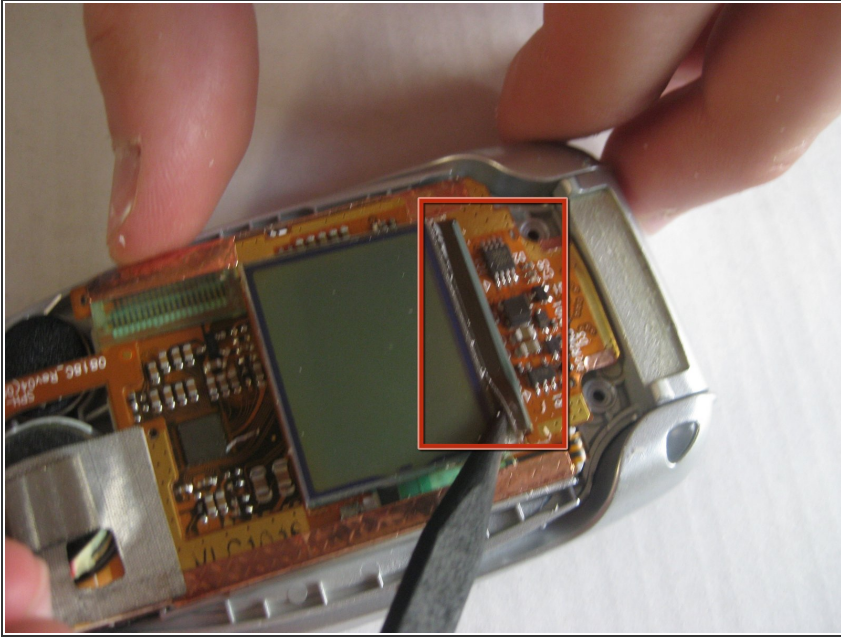
- Completely separate the back cover from the rest of the phone.
- Close the phone.

### Step 4



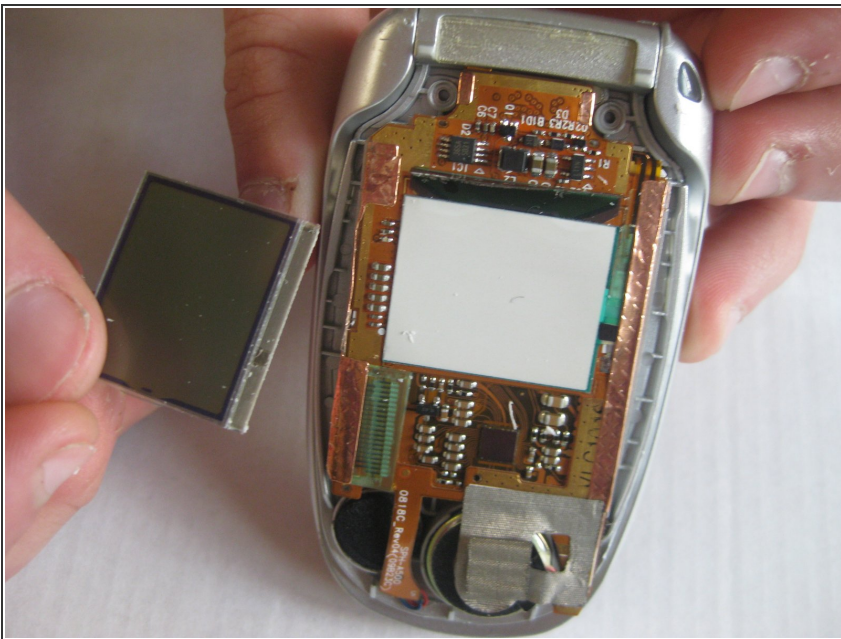
- The LCD screen is big, rectangular screen in the center of the logic board.

## Step 5



- Remove the glue and black tape that is attached to the LCD screen

## Step 6



- Remove Broken LCD Screen.

## Step 7



- Attach the New LCD Screen, with wire point up and out to the black connector.
- ⓘ Note: Super Glue may be required to permanently attach LCD to the black connector

To reassemble your device, follow these instructions in reverse order.