



Samsung SPH-A500 Keypad Replacement

Written By: Nick Dominikovic



INTRODUCTION

Repair guide on how to replace the keypad in a Samsung SPH-A500.



TOOLS:

- [Phillips #0 Screwdriver](#) (1)



PARTS:

- [Replacement keypad](#) (1)

Step 1 — Keypad



- Turn phone over
- Push the gray tab above the battery forward to remove the battery.

Step 2



- Remove the battery from the phone, which will reveal four screws at the corners of the phone.

Step 3



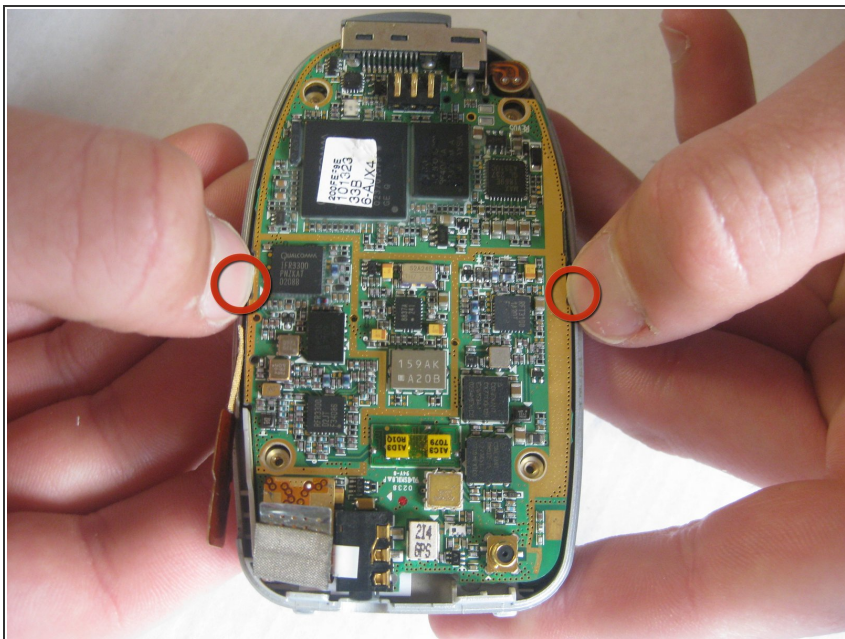
- Remove all four screws using a small Philips screwdriver.
- ⓘ Note: The screws do not need to be completely removed from the case, as long as they are unscrewed.

Step 4



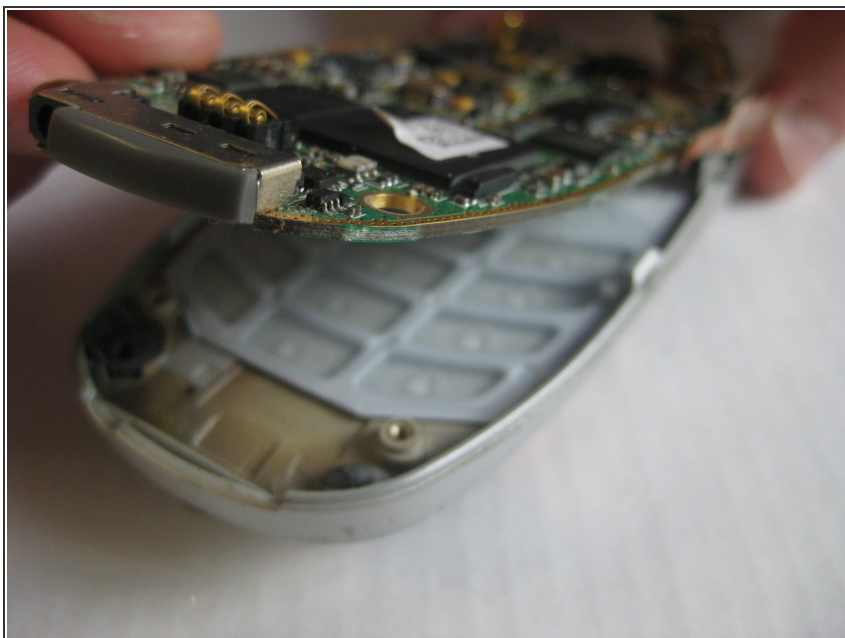
- Remove back cover by carefully prying it open.
- ⓘ Note: Some force may be required.

Step 5



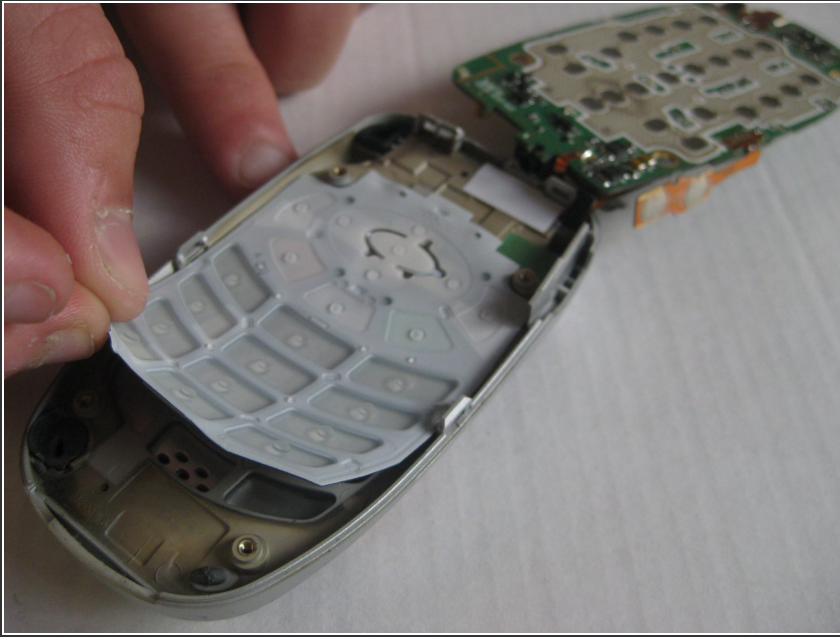
- Pull the side tabs outward while simultaneously lifting up the circuit board.

Step 6



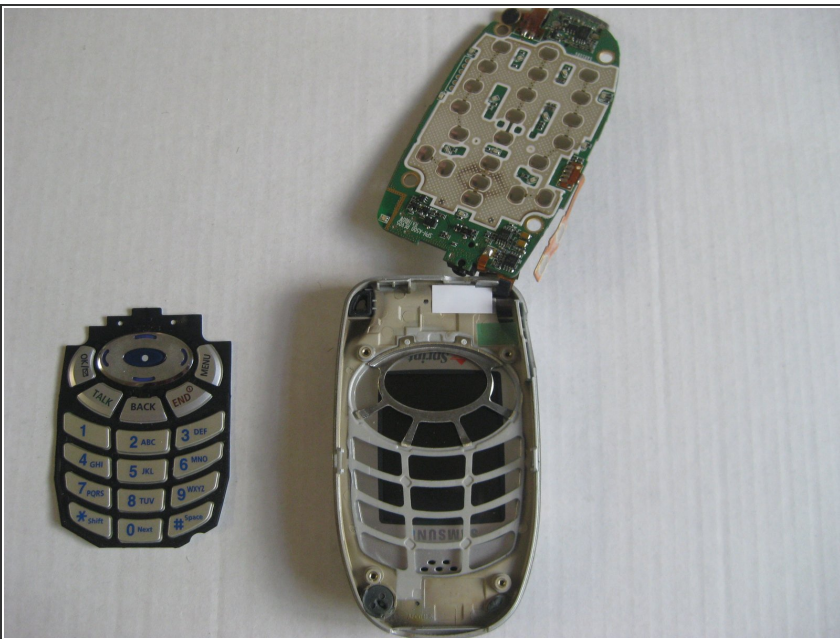
- Lift circuit board from the bottom of the phone.
- ⚠ **WARNING:** DO NOT completely remove circuit board from the phone, since it is still attached at the top of the phone.

Step 7



- Flip the circuit board around the top of the phone.
- Lift the rubber keypad off.

Step 8



- Replace the keypad.

To reassemble your device, follow these instructions in reverse order.